

THE AMAZING



ALARM CLOCK

*instructions

Model number: CE2663



This is a Blue Sky Designs Limited Product. All intellectual property rights will be protected and enforced by the owners whenever necessary.



Congratulations on obtaining your new Time Flyer Plane Alarm Clock!

Please retain these instructions for future use.

This product is not a toy! - Keep away from young children under 3 years old!

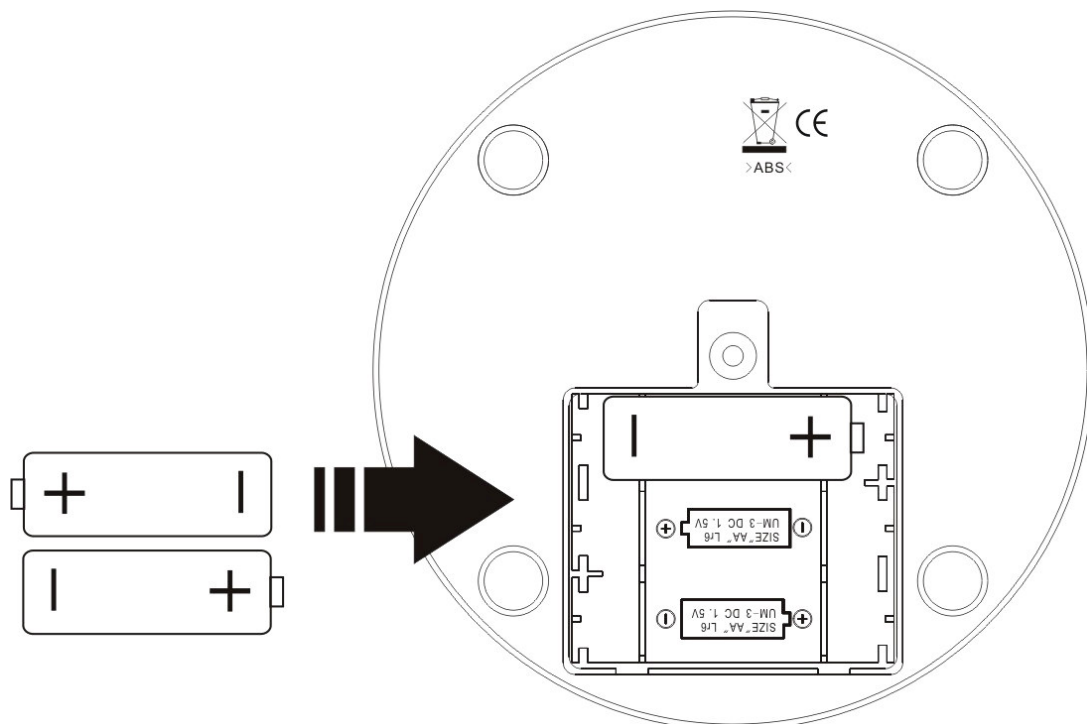
Inserting Batteries into the Time Flyer

The Time Flyer requires three AA BATTERIES.

Follow these simple steps to install the batteries:

1. Use a cross head screwdriver to loosen the screws on the battery compartment on the bottom of the Time Flyer base and remove the battery cover.
2. Insert three AA size batteries (not included), observing the proper +/- polarities as indicated in the battery compartment. Do not mix new and used batteries.
3. Replace the cover and secure with the screw.

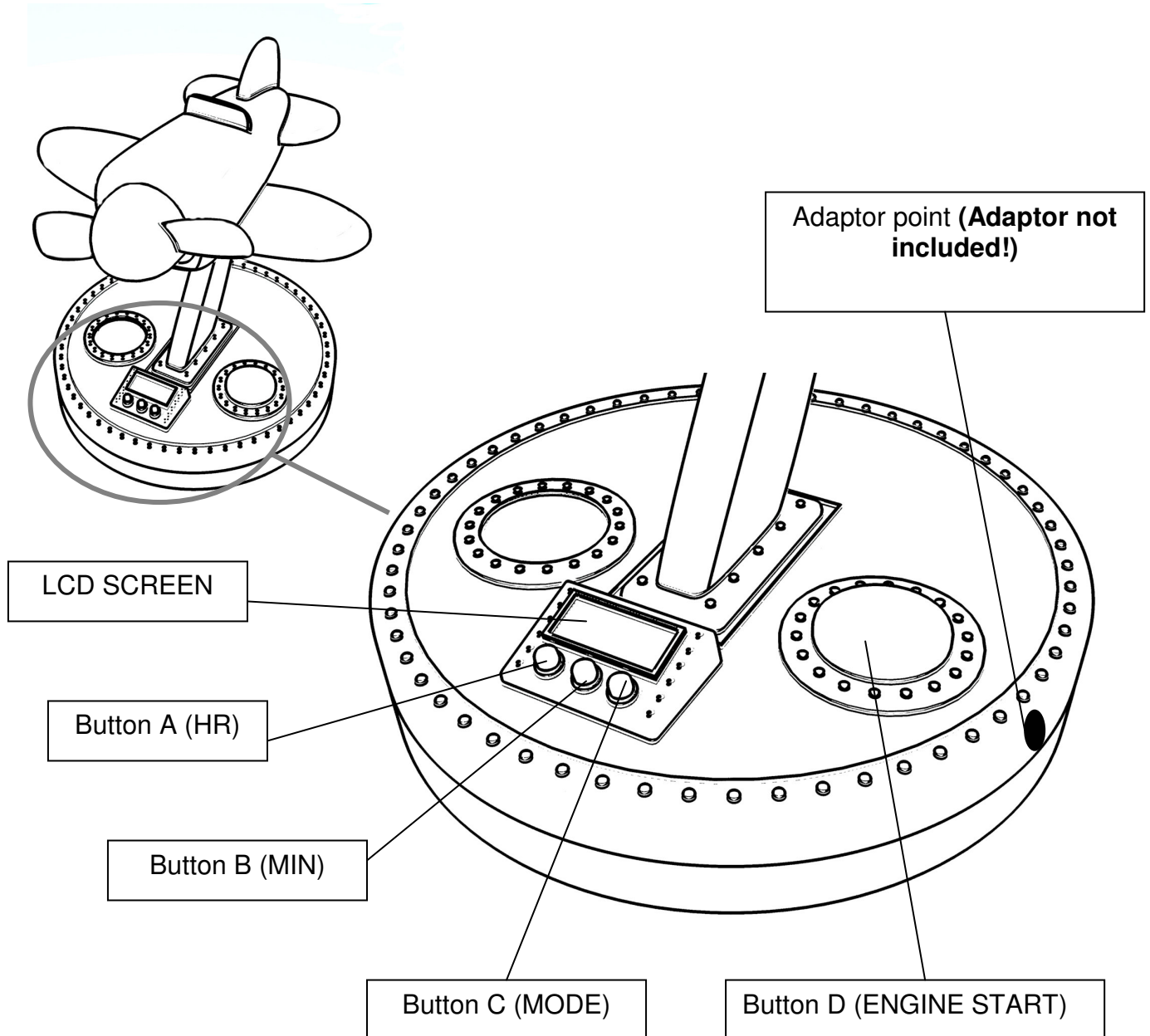
Note: Replace the batteries when the sound becomes weak or distorted or the light up display is not operating properly.



NOTE – THE UNIT HAS AN ADAPTOR JACK ON THE SIDE. THIS ALLOWS THE PRODUCT TO BE RUN FROM MAINS ELECTRICITY. ADAPTORS ARE SOLD SEPARATELY. ONLY THE CORRECT ADAPTOR MUST BE USED WITH THIS ITEM. THIS ADAPTOR SHOULD FIT CORRECTLY AND HAVE AN OUTPUT OF 4.5V and 500mA

Batteries Precaution

1. Use only fresh batteries of the required size and recommended type.
2. Do not mix old and new batteries, different types of batteries (standard, alkaline, or rechargeable), or rechargeable batteries of different capacities.
3. Never leave dead or weak batteries in the unit.
4. If the unit does not appear to be working correctly, replace the batteries.
5. If you do not plan to use the unit for several weeks, remove the batteries. Batteries can leak chemicals that can destroy electronic parts.
6. Dispose of batteries properly and promptly. Do not burn or bury.
7. Non-rechargeable batteries are not to be recharged. Rechargeable batteries are to be removed from the unit before being charged.
8. Rechargeable batteries are only to be charged under adult supervision.
9. The supply terminals are not to be short-circuited.
10. Packaging has to be kept as it contains important information.



Clock/Alarm Settings

Note:

1. The engine will not operate while the clock is in setting mode.
2. While the engine is running by pressing the mode button this will stop the engine. Within 10 seconds it will return to Normal Time Mode. Press the Engine Start button to start the engine again.

The Time flyer has four clock alarm settings as follows:

(SA) : Alarm setting **(OFF)** : Alarm off

(ST) : Time setting **(AL)** : Alarm on

These are displayed on the LCD clock display on the base of the Time Flyer. To move between these use button C (MODE).

The time display looks like the diagram below when in normal mode:



To set the Time on the Time Flyer

- The time can easily be set using buttons A (HR), B (MIN) and C (MODE).
- To set the time, go to Set Time (ST) mode by using button C (MODE).
- Use button A (HR) and button B (MIN) to set the time.
- Once the correct time is set, the clock will automatically return to normal time mode within 10 seconds.

To set the Alarm on the Time Flyer

- The alarm can easily be set using buttons A (HR), B (MIN) and C (MODE).
- To set the alarm go to Set Alarm (SA) mode by using button C (MODE).
- Use button A (HR) and button B (MIN) to set the alarm time.
- The alarm will be activated at this time each day when the Time Flyer Alarm is on (AL).

- Once the correct time is set, the clock will automatically return to normal time mode within 10 seconds.

To Turn the alarm MODE on

- To turn the alarm on, use button C (MODE) until AL is visible at the top of the LCD screen on the base.

To turn the alarm MODE off

- To turn the alarm off, use button C (MODE) until OFF is visible at the top of the LCD screen on the base.

To Start the Time Flyer and see the time

- To start the engines of the Time Flyer and see the light up spinning time press button D (ENGINE START).
- You will hear the Time Flyers engines and the propeller will start to spin.
- The time will then be displayed after 3 seconds when the Time Flyer reaches maximum speed!
- The time will be shown for around 12 seconds, or to stop press button D (ENGINE START).

Note it is normal for the display to remain blank for the first 3 seconds until the Time Flyer reaches the right speed.

To stop the Alarm sounding in Alarm Mode

- When the Time Flyer alarm is activated the spinning light display will show the time and the message WAKE UP! The alarm will sound for 15 seconds, and will come on again after 5 minutes for another 15 seconds. It does this 3 times in total.
- To switch off the Time Flyer in Alarm Mode simply press button D (ENGINE START).

Stickers

- The Time Flyer comes with stickers that can easily be applied.
- The stickers are printed on a transparent film.
- Be careful when removing stickers, as they are easy to tear.

- Stickers can easily be removed from the Time Flyer although some glue residue may remain.