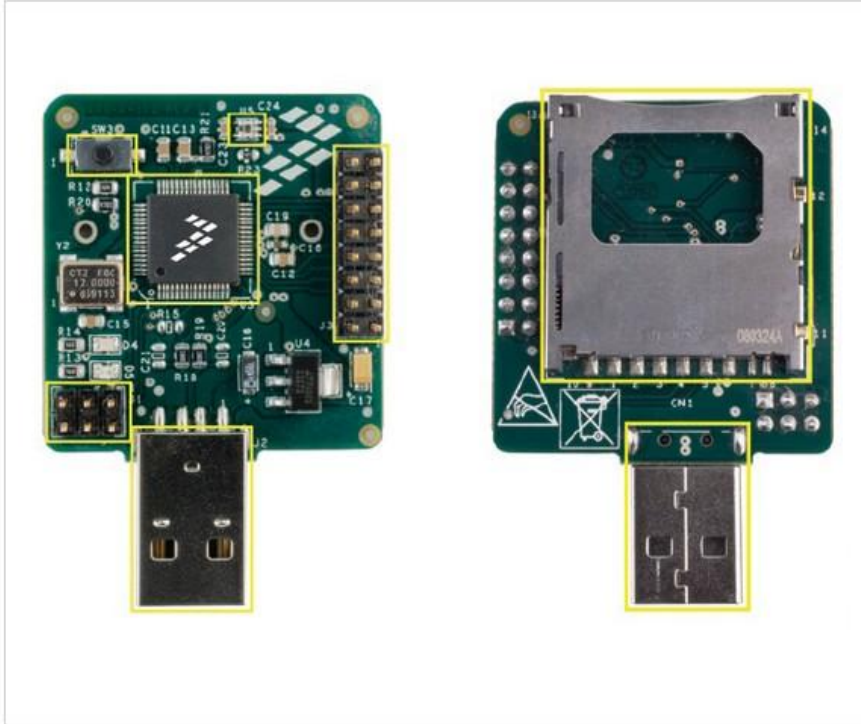


Flexis JM board with SD Card drivers and USB connectivity

Order Number: DEMOFLEXISJMSD



The SD Card Reader reference design allows users to read and write files stored in a SD Card from a PC or another USB host enabled system through the full speed USB module included. The SD Card interface is based on SPI protocol. Mass Storage Device class is used to implement the high level communication between the host application and data memory.

The SD Card reader reference design shows how easy are to interface a SD Card to an 8-bit MCU with a SPI module. This design is an alternative Flexis JM family development board; the user can exchange a MCF51JM128 for a MC9S08JM60 (pin-to-pin compatible). It includes two user LED's, one button and one expansion header that allows users to access other MCU peripherals like SPI, RGPIO, etc.

Features

- USB connectivity
- Light sensor
- SD card socket
- Three LED (1 power + 2 user LEDs)
- One push button
- Expansion header with access to: SPI, RGPIO, SCI etc
- 8-32 bit compatible footprint for JM family (S08 included)

Related Software and Tools

CW-MICROCONTROLLERS: CodeWarrior for Microcontrollers (Classic IDE) - RS08/HC(S)08, ColdFire V1

Supported Devices

- MCF51JM: Flexis 32-bit V1 ColdFire USB Microcontroller
- S08JM: 8-bit USB Cost-Effective JM MCUs

Kit Contains

- PWA, DEMOFLEXISJMSD
- Technical Information Center Freescale Semiconductor Inc.
- Warranty card, Freescale
- Quick Setup Guide, DEMOFLEXISJMSD