

**NO  
EXCUSES!**



## Integration Fire Alarm Terminal Cabinet 16 Point Tool-Less

The IF1 16 point "FIRE ALARM TERMINAL CABINET" is designed to enhance your fire alarm systems. Ideally suited for maintenance and troubleshooting with easy identification of system wiring.

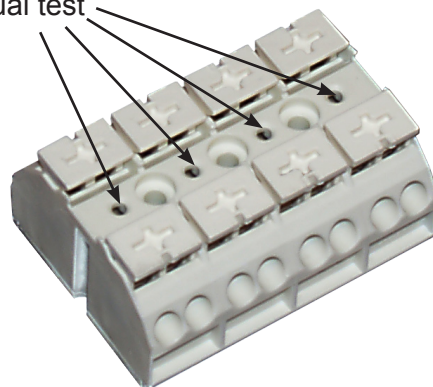
White 7/8" highly visible lettering and a "lift-a-way" hinged door with captive fastener are ideal contributing features for rapid cabinet location and easy access. This surface mount cabinet is fabricated from 16 gauge steel with a durable red textured, baked-on powder coat finish.

The IF1 is supplied with the SAE Tool-Less terminal blocks, saving you time and effort in your installation. Testing the circuits can be accomplished with the use of the TTS Test Probe in the individual test ports.

### Standard Features:

- Dimensions:  
6 1/2" W x 8 1/2" H x 2 1/2" D
- 16 gauge cold rolled steel construction
- Wall mounting holes
- Durable red textured finish
- White 7/8" indelible lettering  
"FIRE ALARM TERMINAL CABINET"
- Lift-a-way hinge with captive fastener
- Interior labeling of terminal strip
- Field identification label inside cover
- Standard 1/2" & 3/4" EMT knockouts
- Galvanized Mounting Plate
- Four 4 Ckt. TTS Tool-Less terminal blocks
- Terminal points rated for 12 gauge wire
- Terminal strip rated for 20 amp max 250V  
(Class B/UL) 300V (CSA)

When properly installed, there will be no conductors exposed. All circuit testing can be performed via the individual test ports per circuit.



**ISO 9001  
REGISTERED  
COMPANY**



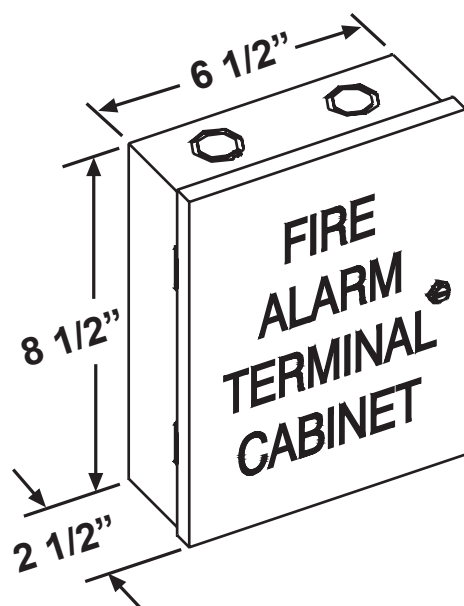
**UL**® - Uses UL Recognized Components

**ACEBOX**

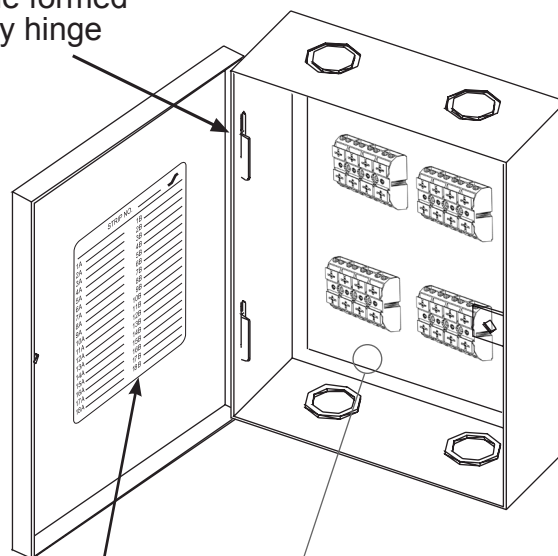
Space Age Electronics, inc.  
www.1SAE.com  
**800.486.1723** Toll Free  
508.485.0966 Local  
508.485.4740 Fax

## Description:

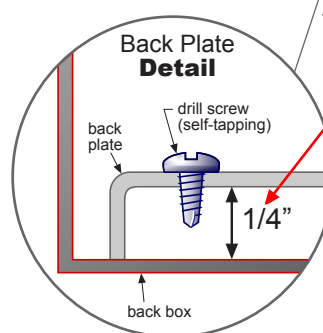
The TC1 18 Point Terminal Cabinet is constructed of 16 gauge (.062 thk.) cold rolled steel and finished with a durable red textured, heat-resistant baked-on enamel finish. The front cover displays "FIRE ALARM TERMINAL CABINET" in 7/8" white screened indelible lettering, and is engineered with a removable formed lift-a-way hinge. A captive fastener secures the front cover. The interior of the box has a field identification label on the inside cover, corresponding to the terminal strip's labeling inside the back box. Overall dimensions measure 6 1/2" wide by 8 1/2" high by 2 1/2" deep. The cabinet includes standard 1/2" and 3/4" EMT knockouts on the top and bottom. A single 18 point high barrier terminal strip is rated for 12 gauge wire and 20 amp max 250V (Class B/UL) 300V (CSA).



Removable formed lift-a-way hinge



Terminal Point Identification Label



1/4" mounting screw clearance from back plate to back box.

## Ordering Information:

| Part #   | Description                   |
|----------|-------------------------------|
| SSU00636 | IF1 16 Point Terminal Cabinet |

## Agency Approvals:

UOXX.S2580 UL Listed Control Unit Accessories

## Optional Accessories:

| SAE 's Toolless Terminal Strip | PN             | Description |
|--------------------------------|----------------|-------------|
| Included in IF1                |                |             |
| SSU00470                       | TTS Black      |             |
| SSU00471                       | TTS White      |             |
| Sold Separately                |                |             |
| SSU00472                       | TTS Test Probe |             |



**ACEBOX**

Space Age Electronics, inc.  
www.ISAE.com  
800.486.1723 Toll Free  
508.485.0966 Local  
508.485.4740 Fax

No Excuses, Just Solutions!

This document is subject to change without notice, see doc # ED0479 for legal disclaimer

ED0442

LT10481

Rev. B

2/2

**NO  
EXCUSES!**



## 32 Point TTS Terminal Cabinet

The IF2 32 point "FIRE ALARM TERMINAL CABINET" is designed to enhance your fire alarm systems. Ideally suited for trouble shooting and maintenance with easy identification of system wiring.

This surface mount cabinet is fabricated from 16 gauge steel with a durable, baked on, red textured powder coat finish. White 2" highly visible lettering and a "lift-a-way" hinged door contribute to fast cabinet location and access. The door incorporates a high security CAT 30 keyed door lock.

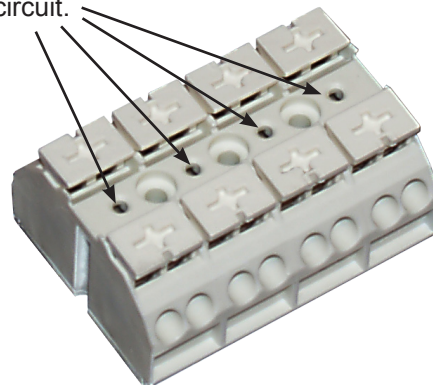
### Standard Features:

- Dimensions: 14" wide x 14" high x 3 1/4" deep
- NEMA 1 Rated Construction
- 16 Gauge Steel Construction
- Removable Back Plate
- Durable Red Textured Finish
- White 2" Indelible Lettering  
"FIRE ALARM TERMINAL CABINET"
- Lift-A-Way Hinge with CAT 30 Keyed Lock
- Terminals have "Built-in Test Point" w/o removing wires
- Field Identification Label Inside Cover
- 1/2", 3/4", 1", 1 1/2" and 2" EMT knockout clusters
- 8 - 4 Circuit TTS (tool less) Terminal Strips
- Terminal Points Rated for 12 Gauge Wire
- Terminal Strips Rated for 20 Amp Max
- 250V (Class B/UL) 300V (CSA)

The IF2 is UL listed for life safety under UL 864 Rev.9

The IF1 is supplied with the SAE Tool-Less terminal blocks, saving you time and effort in your installation. Testing the circuits can be accomplished with the use of the TTS Test Probe in the individual test ports.

When properly installed, there will be no conductors exposed. All circuit testing can be performed via the individual test ports per circuit.



- Uses UL Recognized Components



**ISO 9001  
REGISTERED  
COMPANY**



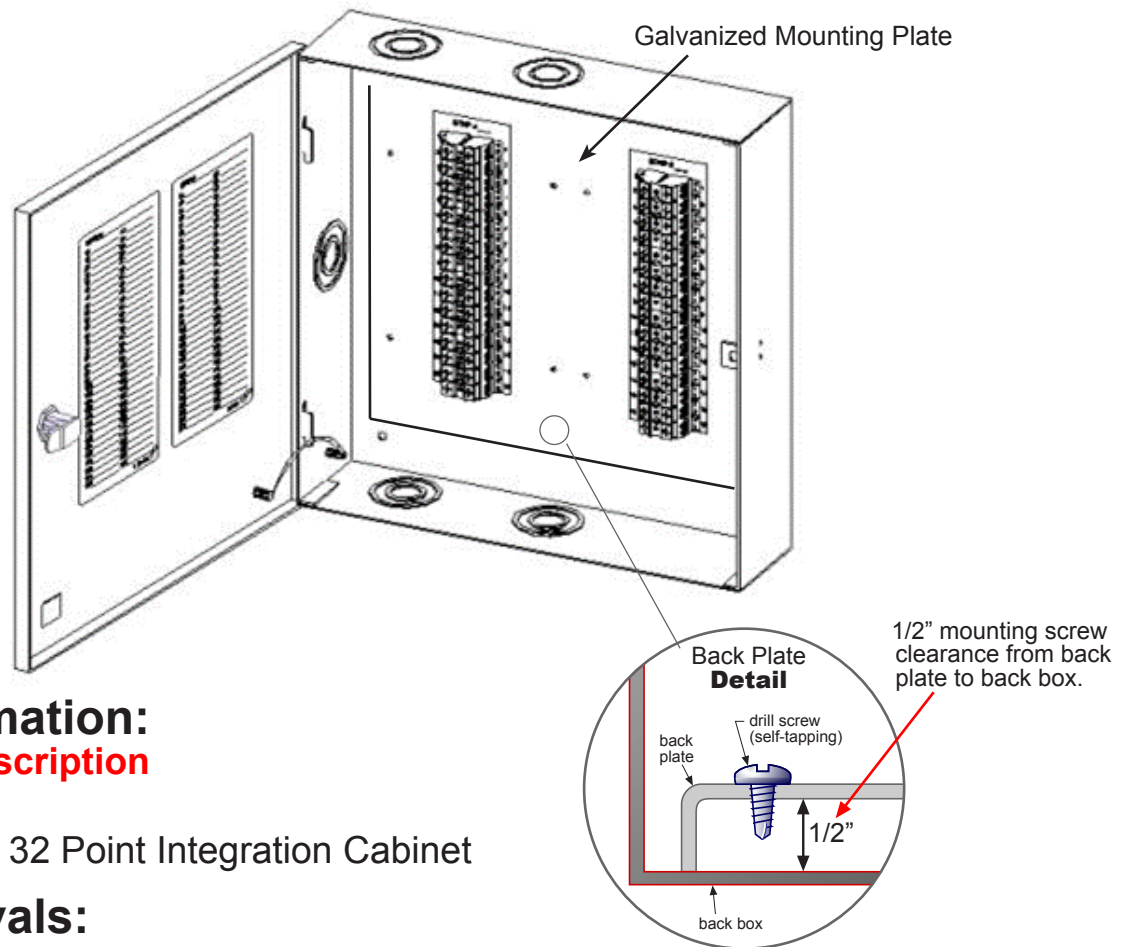
**ACEBOX**

Space Age Electronics, inc.  
www.1SAE.com  
**800.486.1723** Toll Free  
508.485.0966 Local  
508.485.4740 Fax



## Specification:

The **IF2 32 Point Terminal Cabinet** is constructed of 16 gauge (.062 thick) cold rolled steel and finished with a durable red textured, heat-resistant baked-on enamel finish. The front cover is engineered with a removable formed lift-a-way hinge and displays "FIRE ALARM TERMINAL CABINET" in 2" white screened indelible lettering. A CAT 30 keyed door lock secures the front cover. The interior of the box has field identification labels on the inside cover corresponding to the terminal strip's labeling inside the back box. Overall dimensions measure 14" wide by 14" high by 3 1/4" deep. The cabinet includes 1/2", 3/4", 1", 1 1/2" and 2" EMT knockout clusters on the top, bottom and left side. Eight - 4 circuit TTS terminal strips are rated for 12 gauge wire and 20 Amp max 250V (Class B/UL) 300V (CSA). The use of copper conductors is suggested.



## Ordering Information:

| Part #   | Description                      |
|----------|----------------------------------|
| SSU00660 | IF2 32 Point Integration Cabinet |

## Agency Approvals:

|            |                                    |
|------------|------------------------------------|
| UOXX.S2580 | UL Listed Control Unit Accessories |
|------------|------------------------------------|

## Optional Accessories:

| SAE 's Toolless Terminal Strip<br>PN | Description    |
|--------------------------------------|----------------|
| SSU00470                             | TTS Black      |
| SSU00471                             | TTS White      |
| Sold Separately                      |                |
| SSU00472                             | TTS Test Probe |


**ACEBOX**

Space Age Electronics, inc.  
 www.1SAE.com  
 800.486.1723 Toll Free  
 508.485.0966 Local  
 508.485.4740 Fax



**NO  
EXCUSES!**



## Terminal Cabinet

The IFX "FIRE ALARM TERMINAL CABINET" offers easy identification of fire alarm wiring junctions for troubleshooting and maintenance of system wiring.

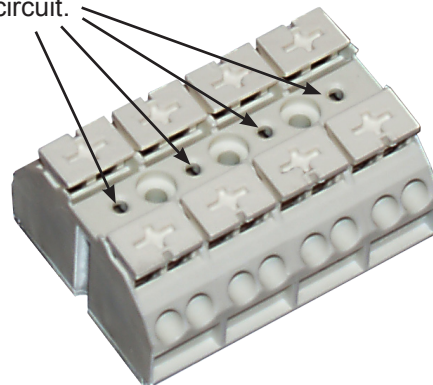
Highly visible 2" lettering and a removable "lift-a way" hinged door contribute to fast location and easy access. This surface mount cabinet is fabricated from 16 gauge steel with a durable, baked on, red textured powder coat finish. The IFX includes a high security CAT 30 keyed door lock and is UL listed for life safety.

The IFX is supplied with the SAE Tool-Less terminal blocks, saving you time and effort in your installation. Testing the circuits can be accomplished with the use of the TTS Test Probe in the individual test ports.

### Standard Features:

- Available in size A or D
- 16 gauge steel construction
- Durable red textured finish
- White 2" indelible lettering  
"Fire Alarm Terminal Cabinet"
- Lift-a way hinge with CAT 30 keyed door lock
- Interior labeling of terminal strips
- Field identification labels inside cover
- 1/2", 3/4", 1", 1 1/2" and 2" EMT knockout clusters
- Sace Age TTS Toolless terminal strips
- Terminal points rated for 20 - 12 gauge wire
- Terminal strips rated for 20 amp max 250V (Class B/UL) 300V (CSA)

When properly installed, there will be no conductors exposed. All circuit testing can be performed via the individual test ports per circuit.



### Options:

- Custom finish
- Custom legend



**ISO 9001  
REGISTERED  
COMPANY**



Made In U.S.A.

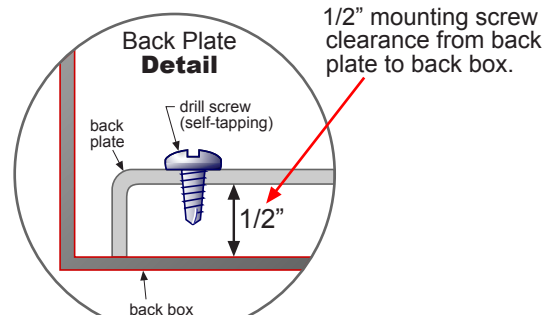
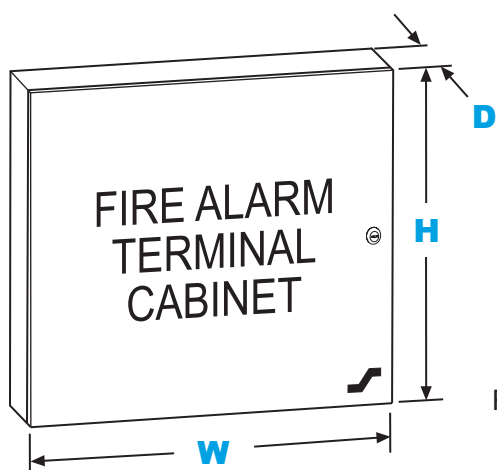
**ACEBOX**

Space Age Electronics, inc.  
www.ISAE.com  
**800.486.1723** Toll Free  
508.485.0966 Local  
508.485.4740 Fax

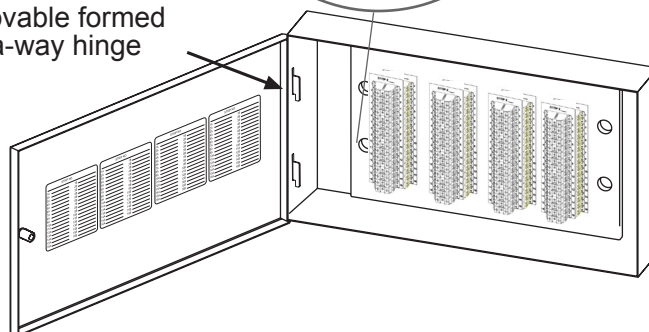
## Description:

The IFX Terminal Cabinet is constructed of 16 gauge (.062 thk.) cold rolled steel and finished with a durable red textured, heat-resistant baked-on enamel finish. The front cover displays "FIRE ALARM TERMINAL CABINET" in 2" white indelible screened lettering and features a removable formed lift-a-way hinge and a high security CAT 30 keyed door lock. The interior of the box contains field identification labels on the inside cover corresponding to the terminal strip's labeling inside the back box. The cabinet employs SAE TTS Tool less terminal strips rated for 12 gauge wire and 20 amp max 250V (Class B/UL) 300V (CSA). The dual barrier terminal strips are mounted on a durable 18 GA cold rolled steel galvanize finish backboard and secured to the back box. Custom finish and legend available. The cabinet includes embedded 1/2", 3/4", 1", 1 1/2" and 2" EMT knockout clusters.

| Size | # of Terminal Points | Overall Dimensions of Cabinet |         |        | Cubic Inches |
|------|----------------------|-------------------------------|---------|--------|--------------|
|      |                      | W                             | H       | D      |              |
| A    | 64                   | 23 1/2"                       | 13"     | 5 1/2" | 1582.00"     |
| D    | 128                  | 23 1/2"                       | 23 1/2" | 5 1/2" | 2813.78"     |



Removable formed lift-a-way hinge



## Ordering Information:

| Part #   | Description                     |
|----------|---------------------------------|
| SSU00661 | IFXA 64 Point Terminal Cabinet  |
| SSU00663 | IFXD 128 Point Terminal Cabinet |

## Agency Approvals:

UOXX.S2580 UL Listed Control Unit Accessories

## Optional Accessories:

| SAE 's Tooless Terminal Strip | PN | Description    |
|-------------------------------|----|----------------|
| Included in IFX               |    |                |
| SSU00470                      |    | TTS Black      |
| SSU00471                      |    | TTS White      |
| Sold Separately               |    |                |
| SSU00472                      |    | TTS Test Probe |



**ACEBOX**

Space Age Electronics, inc.  
www.1SAE.com  
800.486.1723 Toll Free  
508.485.0966 Local  
508.485.4740 Fax

*No Excuses, Just Solutions!*

This document is subject to change without notice, see doc # ED0479 for legal disclaimer

ED0417

LT10424

Rev.A

2/2

**NO  
EXCUSES!**



## 18 Point Terminal Cabinet

The TC1 18 point "FIRE ALARM TERMINAL CABINET" is designed to enhance your fire alarm systems. Ideally suited for maintenance and troubleshooting with easy identification of system wiring.

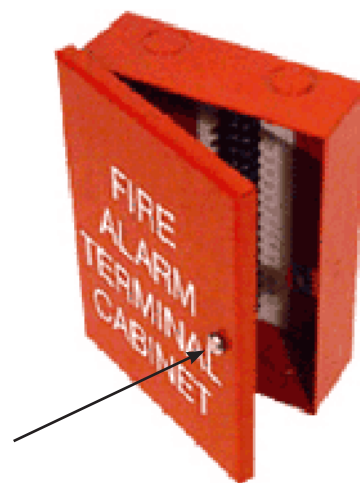
White 7/8" highly visible lettering and a "lift-a-way" hinged door with captive fastener or high security Cam Lock makes this an ideal "quick and easy" termination point. This surface mount cabinet is fabricated from 16 gauge steel with a durable red textured, baked-on powder coat finish.

The TC1 is UL listed for life safety.



### Standard Features:

- Dimensions:  
6 1/2" wide x 8 1/2" high x 2 1/2" deep
- 16 gauge cold rolled steel construction
- Captive Screw or Cam Lock securing devices
- Wall mounting holes
- Durable red textured finish
- White 7/8" indelible lettering
- "FIRE ALARM TERMINAL CABINET"
- Lift-a-way hinge
- Interior labeling of terminal strip
- Field identification label inside cover
- Standard 1/2" & 3/4" EMT knockouts
- Single 18 point high barrier terminal strip
- Terminal points rated for 12 gauge wire
- Terminal strip rated for 20 amp max 250V
- (Class B/UL) 300V (CSA)



The TC1 door can be equipped with a friction catch or a high security CAT 30 key and lock set.



Uses UL Recognized Components



**ISO 9001  
REGISTERED  
COMPANY**

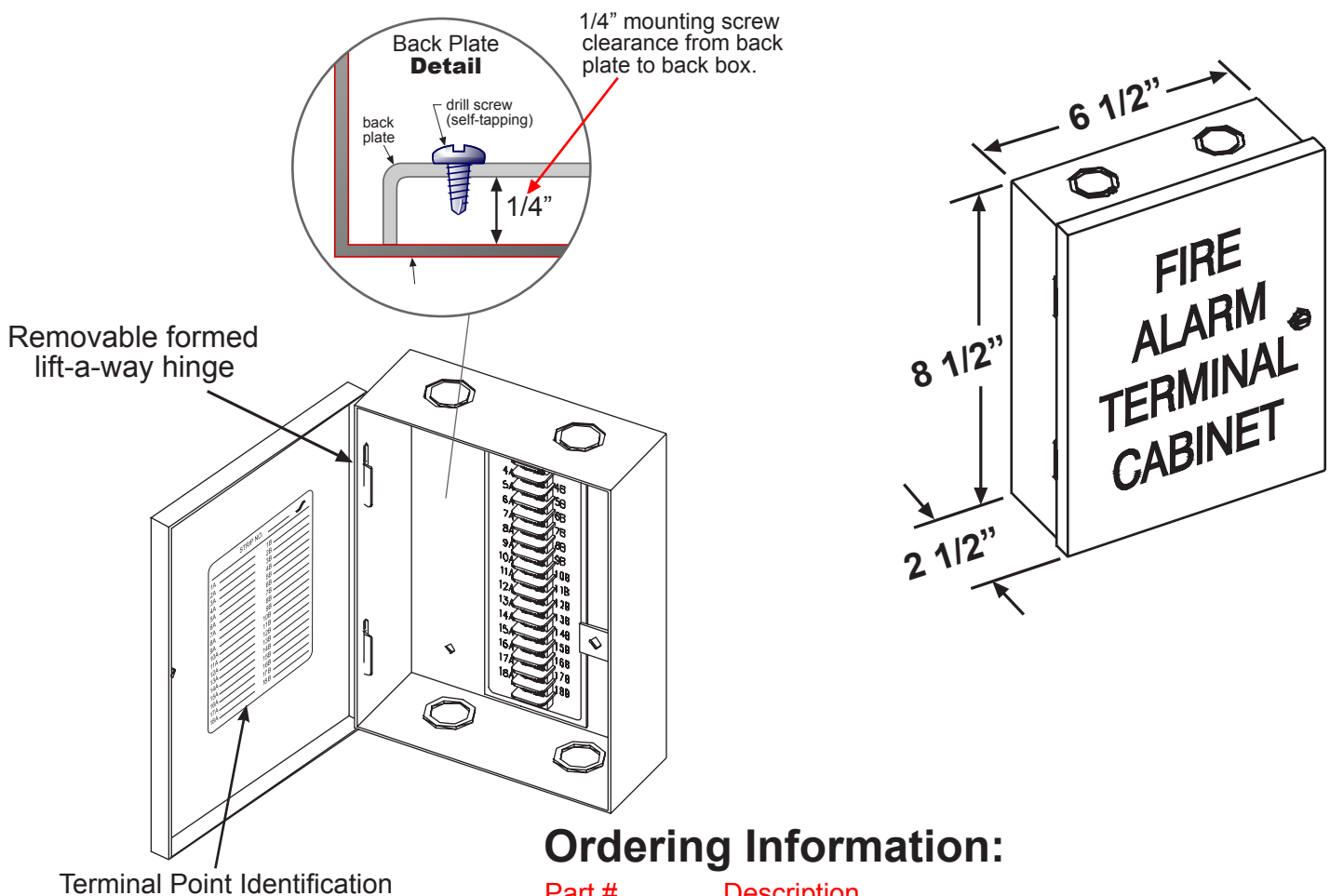
**ACEBOX**

Space Age Electronics, Inc.  
www.1sac.com  
800.486.1723 Toll Free  
508.485.0966 Local  
508.485.4740 Fax



## Specifications:

The TC1 18 Point Terminal Cabinet is constructed of 16 gauge (.062 thk.) cold rolled steel and finished with a durable red textured, heat-resistant baked-on enamel finish. The front cover displays "FIRE ALARM TERMINAL CABINET" in 7/8" white screened indelible lettering, and is engineered with a removable formed lift-a-way hinge. The choice of a captive fastener or CAT-30 Cam Lock secures the front cover. The interior of the box has a field identification label on the inside cover, corresponding to the terminal strip's labeling inside the back box. Overall dimensions measure 6 1/2" wide by 8 1/2" high by 2 1/2" deep. The cabinet includes standard 1/2" and 3/4" EMT knockouts on the top and bottom. A single 18 point high barrier terminal strip is rated for 12 gauge wire and 20 amp max 250V (Class B/UL) 300V (CSA).



## Ordering Information:

| Part #   | Description                                      |
|----------|--|
| SSU00635 | TC1 18 Point Terminal Cabinet w/Captive Fastener |
| SSU00636 | TC1 18 Point Terminal Cabinet w/CAT30 Lock*      |

## Agency Approvals:

|            |                                    |
|------------|------------------------------------|
| UOXX.S2580 | UL Listed Control Unit Accessories |
|------------|------------------------------------|

\* TC1 w/CAT30 Lock is not UL Listed

**ACEBOX**

Space Age Electronics, Inc.  
 www.1sae.com  
 800.486.1723 Toll Free  
 508.485.0966 Local  
 508.485.4740 Fax

*No Excuses, Just Solutions!*

This document is subject to change without notice, see doc # ED0479 for legal disclaimer

ED0150

LT10221

Rev.B

2/2

**NO  
EXCUSES!**



## 32 Point Terminal Cabinet

The TC2 32 point "FIRE ALARM TERMINAL CABINET" is designed to enhance your fire alarm systems. Ideally suited for trouble shooting and maintenance with easy identification of system wiring.

This surface mount cabinet is fabricated from 16 gauge steel with a durable, baked on, red textured powder coat finish. White 2" highly visible lettering and a "lift-a-way" hinged door contribute to fast cabinet location and access. The door incorporates a high security CAT 30 keyed door lock. The TC2 is UL listed for life safety.

### Standard Features:

- Dimensions:  
14" wide x 14" high x 3 1/4" deep
- 16 gauge steel construction
- Wall mounting holes
- Durable red textured finish
- White 2" indelible lettering "FIRE ALARM TERMINAL CABINET"
- Lift-a-way hinge with CAT 30 keyed door lock
- Interior labeling of terminal strip
- Field identification label inside cover
- 1/2", 3/4", 1", 1 1/2" and 2" EMT knockout clusters
- Dual 16 point high barrier terminal strips
- Terminal points rated for 12 gauge wire
- Terminal strips rated for 20 amp max 250V (Class B/UL) 300V (CSA)

Life Safety installations demand code compliant products. The TC2 uses only UL Recognized components.



**ADA**



**NFPA**



Made In U.S.A.



Uses UL Recognized Components

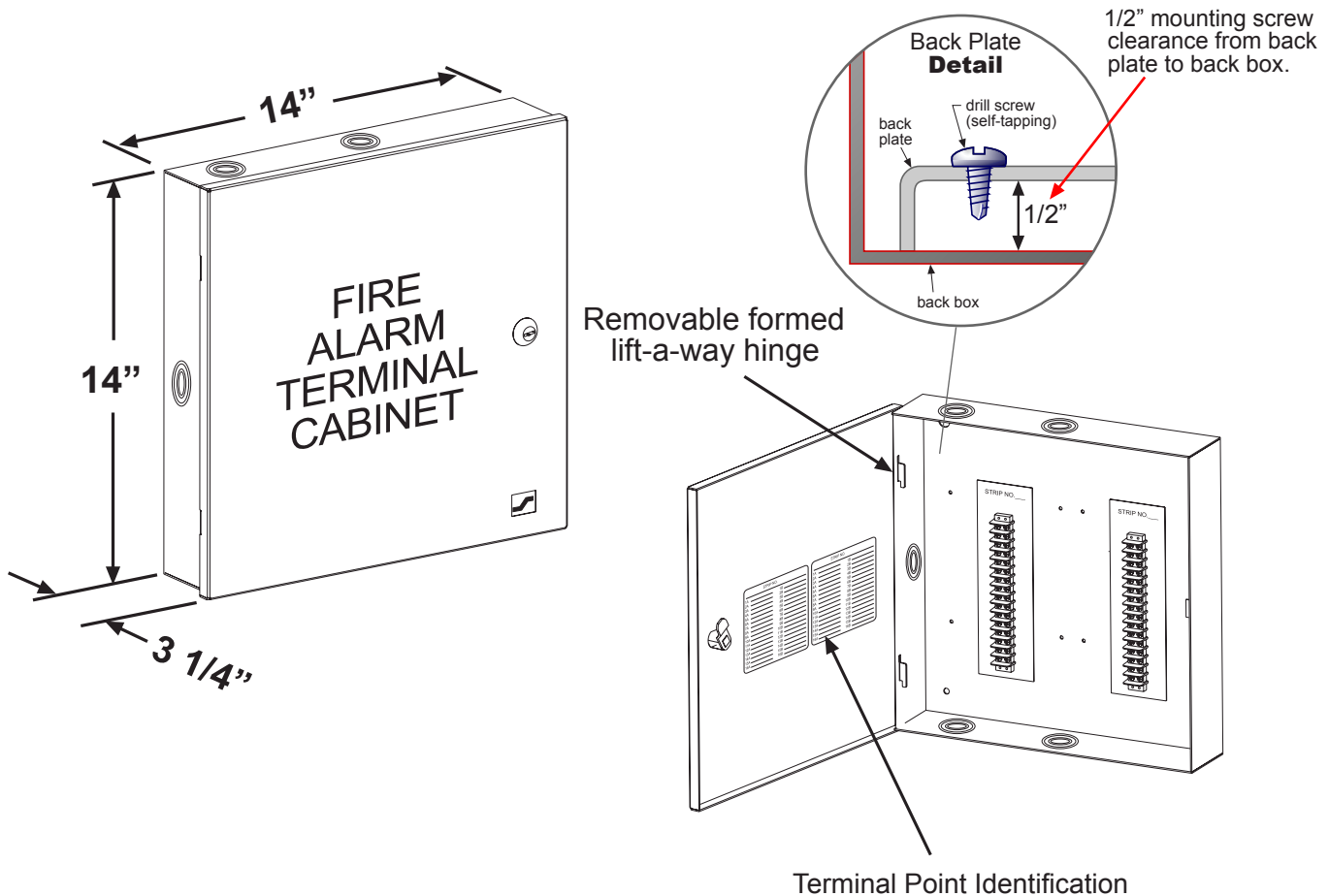
**ISO 9001  
REGISTERED  
COMPANY**

**ACEBOX**

Space Age Electronics, Inc.  
www.1sae.com  
**800.486.1723** Toll Free  
508.485.0966 Local  
508.485.4740 Fax

## Specifications:

The TC2 32 Point Terminal Cabinet is constructed of 16 gauge (.062 thk.) cold rolled steel and finished with a durable red textured, heat-resistant baked-on enamel finish. The front cover is engineered with a removable formed lift-a-way hinge and displays "FIRE ALARM TERMINAL CABINET" in 2" white screened indelible lettering. A CAT 30 keyed door lock secures the front cover. The interior of the box has field identification labels on the inside cover corresponding to the terminal strip's labeling inside the back box. Overall dimensions measure 14" wide by 14" high by 3 1/4" deep. The cabinet includes 1/2", 3/4", 1", 1 1/2" and 2" EMT knockout clusters on the top, bottom and left side. Interior dual 16 point high barrier terminal strips are rated for 12 gauge wire and 20 amp max 250V (Class B/UL) 300V (CSA).



## Ordering Information:

| Part # | Description |
|--------|-------------|
|--------|-------------|

|          |                               |
|----------|-------------------------------|
| SSU00645 | TC2 32 Point Terminal Cabinet |
|----------|-------------------------------|

## Agency Approvals:

|            |                                    |
|------------|------------------------------------|
| UOXX.S2580 | UL Listed Control Unit Accessories |
|------------|------------------------------------|

**ACEBOX**

Space Age Electronics, Inc.  
 www.1sae.com  
 800.486.1723 Toll Free  
 508.485.0966 Local  
 508.485.4740 Fax

*No Excuses, Just Solutions!*

This document is subject to change without notice, see doc # ED0479 for legal disclaimer

ED0142

LT10127

Rev.B

2/2



**NO  
EXCUSES!**



## 64 - 128 Point Terminal Cabinet

The TCX "FIRE ALARM TERMINAL CABINET" offers easy identification of fire alarm wiring junctions for troubleshooting and maintenance of system wiring.

Highly visible 2" lettering and a removable "lift-a-way" hinged door contribute to fast location and easy access. This surface mount cabinet is fabricated from 16 gauge steel with a durable, baked on, red textured powder coat finish. The TCX includes a high security CAT 30 keyed door lock and is UL listed for life safety.

### Standard Features:

- Available in size A or D
- 16 gauge steel construction
- Durable red textured finish
- White 2" indelible lettering  
"Fire Alarm Terminal Cabinet"
- Lift-a way hinge with CAT 30 keyed door lock
- Interior labeling of terminal strips
- Field identification labels inside cover
- 1/2", 3/4", 1", 1 1/2" and 2" EMT knockout clusters
- Dual 16 point high barrier terminal strips
- Terminal points rated for 12 gauge wire
- Terminal strips rated for 20 amp max 250V (Class B/UL) 300V (CSA)



The TCX is available in either the ACE "A" or "D" sizes. The ACE A supplies you with 64 terminals while the ACE D supplies you with 128 terminals.



Uses UL Recognized Components



**ISO 9001  
REGISTERED  
COMPANY**



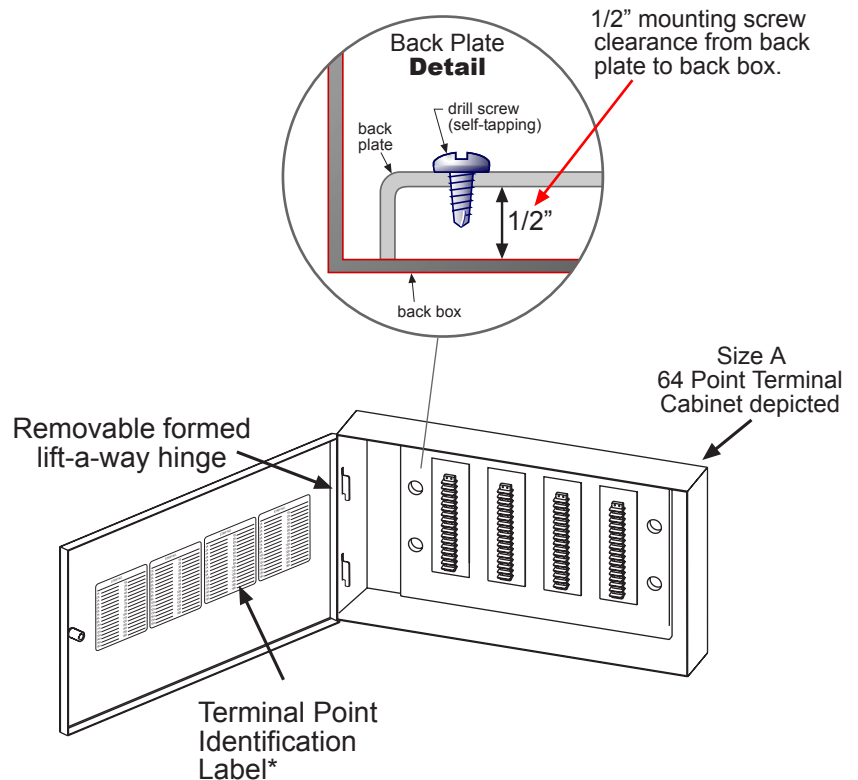
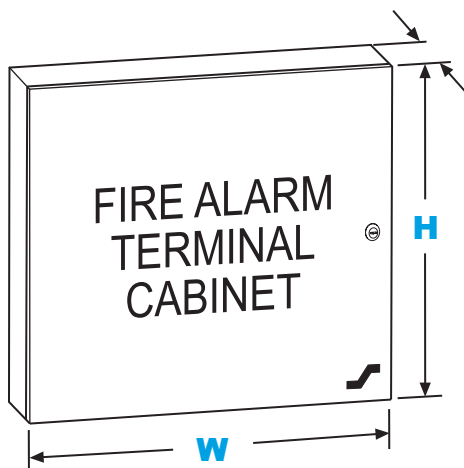
**ACE BOX**

Space Age Electronics, Inc.  
[www.1sae.com](http://www.1sae.com)  
**800.486.1723** Toll Free  
508.485.0966 Local  
508.485.4740 Fax

## Specifications:

The TCX Terminal Cabinet is constructed of 16 gauge (.062 thk.) cold rolled steel and finished with a durable red textured, heat-resistant baked-on enamel finish. The front cover displays "FIRE ALARM TERMINAL CABINET" in 2" white indelible screened lettering and features a removable formed lift-a-way hinge and a high security CAT 30 keyed door lock. The interior of the box contains field identification labels on the inside cover corresponding to the terminal strip's labeling inside the back box. The cabinet employs dual 16 point high barrier terminal strips rated for 12 gauge wire and 20 amp max 250V (Class B/UL) 300V (CSA). The dual barrier terminal strips are mounted on a durable 18 GA cold rolled steel galvanized finish backboard and secured to the back box. Custom finish and legend available. The cabinet includes embedded 1/2", 3/4", 1", 1 1/2" and 2" EMT knockout clusters.

| Size | # of Terminal Points | Overall Dimensions of Cabinet |         |        |
|------|----------------------|-------------------------------|---------|--------|
|      |                      | W                             | H       | D      |
| A    | 64                   | 23 1/2"                       | 13"     | 5 1/2" |
| D    | 128                  | 23 1/2"                       | 23 1/2" | 5 1/2" |



## Agency Approvals:

UOXX.S2580

UL Listed Control Unit Accessories

## Ordering Information:

| Part #   | Description                      |
|----------|----------------------------------|
| SSU00651 | TCX A 64 Point Terminal Cabinet  |
| SSU00653 | TCX D 128 Point Terminal Cabinet |



Space Age Electronics, Inc.  
 www.1sae.com  
 800.486.1723 Toll Free  
 508.485.0966 Local  
 508.485.4740 Fax

*No Excuses, Just Solutions!*

This document is subject to change without notice, see doc # ED0479 for legal disclaimer

ED0060

LT10121

Rev.D

2/2

**NO  
EXCUSES!**



# ACE



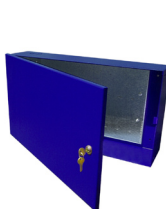
## Accessory Cabinet Enclosure

The ACE Accessory Cabinet provides an economical enclosure, ideally suited for field trouble shooting and easy maintenance of system wiring. This surface mount cabinet is fabricated from 16 gauge steel with a durable, red textured powder coat finish. It features a formed lift-a-way hinged door for ease of access and maintenance and is key locked (CAT 30) for security.

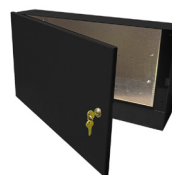
The ACE cabinet includes an interior galvanized back plate with hole matrix configuration for mounting optional components. The back plate is raised (1/2"), for clearance of mounting hardware, as not to interfere with the back box. With the use of drill screws, which easily penetrate and securely hold components in place, the interior back plate's material allows custom configuration and installation of other equipment.

## Standard Features:

- Standard A and D surface mount, custom sizes available
- 16 gauge steel construction
- Durable red textured finish
- Lift-a-way hinge with a CAT 30 keyed door lock
- 1/2", 3/4", 1", 1 1/2" and 2" EMT knockout clusters
- 20 gauge galvanized back plate with mounting hole matrix
- Internal threaded grounding lug screw in back box
- Grounding stud screw on cover
- Removable, 1/2" raised back plate, mounted on 4 studs



blue



black



green

More custom cabinet colors available.

## Custom Lettering Available:

- Fire Alarm Cabinet
- Access Control Cabinet
- Security Cabinet
- Intercom Cabinet



**ISO 9001  
REGISTERED  
COMPANY**



**ACE BOX**

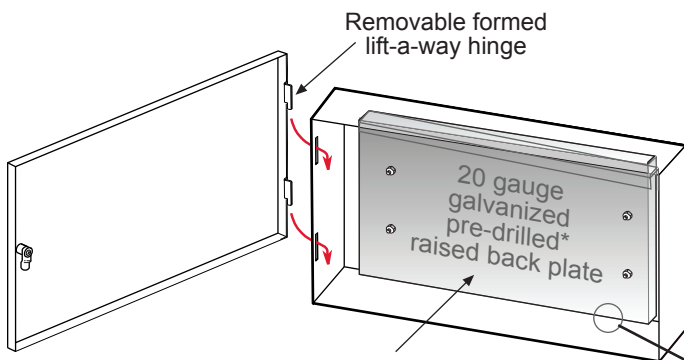
Space Age Electronics, Inc.  
www.1sae.com  
**800.486.1723** Toll Free  
508.485.0966 Local  
508.485.4740 Fax



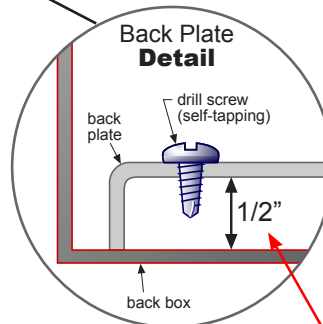
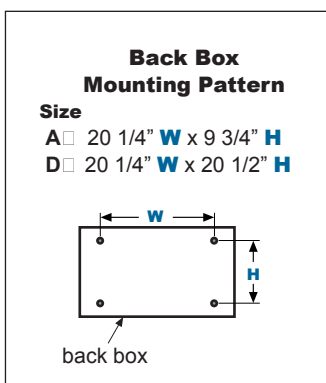
## Specifications:

The ACE Accessory Cabinet Enclosure, A and D sizes, are constructed of 16 gauge (.062 thk.) cold rolled steel and finished with a durable red textured, heat-resistant baked-on enamel finish. The front cover features a removable formed lift-a-way hinge and a high security CAT 30 keyed door lock. Custom finishes and labeling available. EMT knockout 1/2", 3/4", 1", 1 1/2" and 2" clusters embedded in cabinet. The removable back plate is a 20 gauge galvanized plate mounted on studs to the back box. The back plate clears the back box by 1/2" to accommodate for mounting hardware on the back plate. Custom equipment mounting can be easily accomplished with the use of standard hole matrix or self tapping drill screws. Cover and back box include a threaded grounding stud and lug.

| Size | Overall Dimensions of Cabinet             |
|------|---|
| A    | 23 1/2" wide x 13" high x 5 1/2" deep     |
| D    | 23 1/2" wide x 23 1/2" high x 5 1/2" deep |

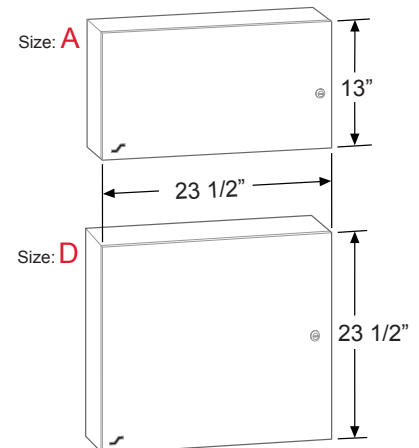


Removable back plate enables mounting components and modules easily to meet your custom configuration specifications.



1/2" mounting screw clearance from back plate to back box

## Overall Cabinet Dimensions



Custom sizes available.

## Ordering Information:

| Part #   | Description                            |
|----------|--|
| SSU00655 | ACE A Accessory Cabinet Enclosure, Red |
| SSU00657 | ACE D Accessory Cabinet Enclosure, Red |

## Agency Approvals:

|            |                                    |
|------------|------------------------------------|
| UOXX.S2580 | UL Listed Control Unit Accessories |
|------------|------------------------------------|

**ACEBOX**

Space Age Electronics, Inc.  
www.1sae.com  
800.486.1723 Toll Free  
508.485.0966 Local  
508.485.4740 Fax

No Excuses, Just Solutions!

This document is subject to change without notice, see doc # ED0479 for legal disclaimer

ED0205

LT10065

Rev.E

2/2

**NO  
EXCUSES!**



# AC2



## Accessory Cabinet Enclosure

The AC2 Accessory Cabinet provides an economical enclosure, ideally suited for field trouble shooting and easy maintenance of system wiring. This surface mount cabinet is fabricated from 16 gauge steel with a durable, red textured powder coat finish. It features a formed lift-a-way hinged door for ease of access and maintenance and is key locked (CAT 30) for security.

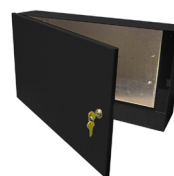
The AC2 cabinet includes an interior galvanized back plate with hole matrix configuration for mounting optional components. The back plate is raised (1/2"), for clearance of mounting hardware, as not to interfere with the back box. With the use of drill screws, which easily penetrate and securely hold components in place, the interior back plate's material allows custom configuration and installation of other equipment.

## Standard Features:

- Dimensions: 13.75" wide x 13.75" high x 3 1/4" deep
- 16 gauge steel construction
- Durable red textured finish
- Lift-a-way hinge with CAT 30 keyed door lock
- 1/2", 3/4", 1", 1 1/2" and 2" EMT knockout clusters
- 20 gauge galvanized back plate with mounting hole matrix
- Internal threaded grounding lug screw in back box
- Grounding stud screw on cover
- Removable, 1/2" raised back plate, mounted on 4 studs
- Wall mounting holes



blue



black



green

More custom cabinet colors available.

## Custom Lettering Available:

- Fire Alarm Cabinet
- Access Control Cabinet
- Security Cabinet
- Intercom Cabinet



**ISO 9001  
REGISTERED  
COMPANY**

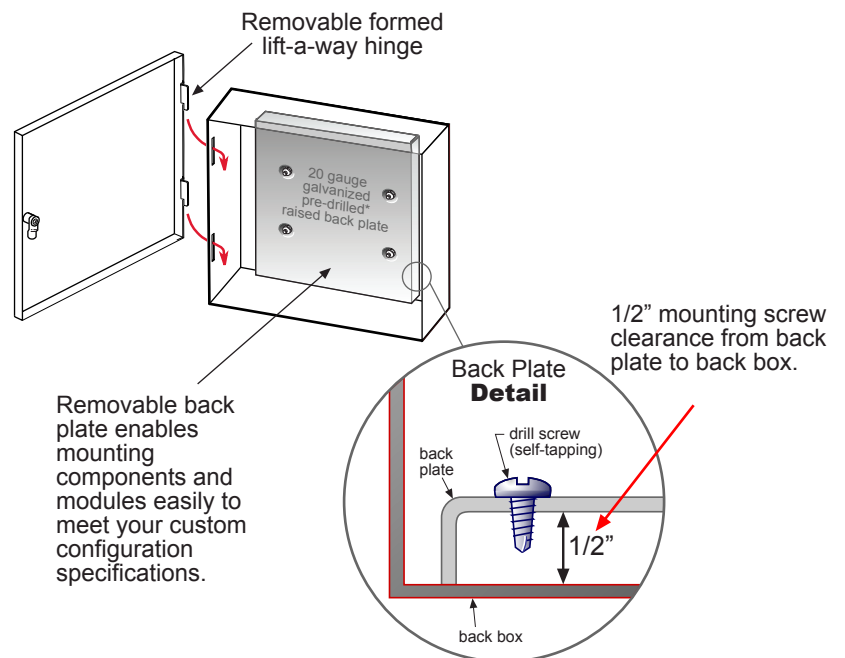
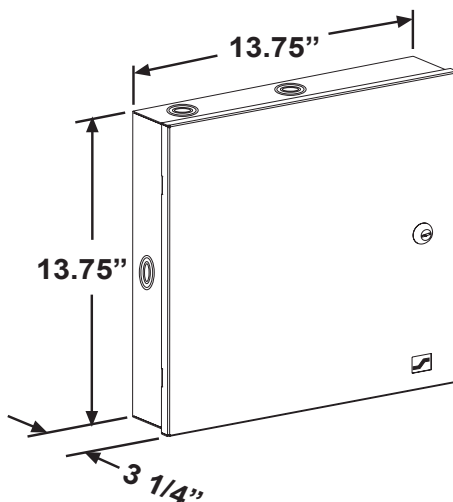
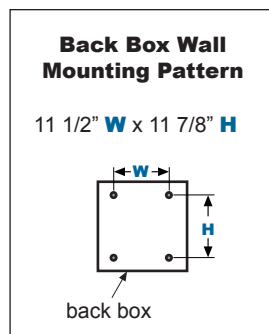


**ACEBOX**

Space Age Electronics, Inc.  
www.1sae.com  
**800.486.1723** Toll Free  
508.485.0966 Local  
508.485.4740 Fax

## Specifications:

The AC2 Accessory Cabinet Enclosure, is constructed of 16 gauge (.062 thk.) cold rolled steel and finished with a durable red textured, heat-resistant baked-on enamel finish. The front cover features a removable formed lift-a-way hinge and a high security CAT 30 keyed door lock. Custom finishes and labeling available. EMT knockout 1/2", 3/4", 1", 1 1/2" and 2" clusters embedded in cabinet. The removable back plate is a 20 gauge galvanized plate mounted on studs to the back box. The back plate clears the back box by 1/2" to accommodate for mounting hardware on the back plate. Custom equipment mounting can be easily accomplished with the use of standard hole matrix or self tapping drill screws. Cover and back box include a threaded grounding stud and lug.



## Ordering Information:

| Part #   | Description                          |
|----------|--------------------------------------|
| SSU00656 | AC2 Accessory Cabinet Enclosure, Red |

## Agency Approvals:

|            |                                    |
|------------|------------------------------------|
| UOXX.S2580 | UL Listed Control Unit Accessories |
|------------|------------------------------------|

**ACEBOX**

Space Age Electronics, Inc.  
 www.1sac.com  
 800.486.1723 Toll Free  
 508.485.0966 Local  
 508.485.4740 Fax

*No Excuses, Just Solutions!*

This document is subject to change without notice, see doc # ED0479 for legal disclaimer

ED0315

LT10320

Rev.A

2/2

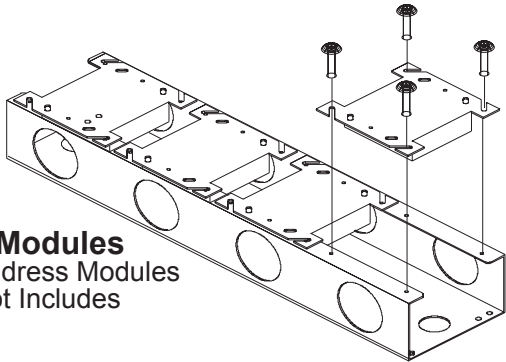


**NO  
EXCUSES!**



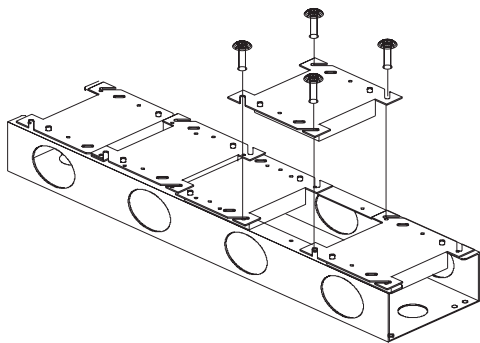
#### 4 Modules

Address Modules  
Not Includes



#### 5 Modules

Address Modules  
Not Includes



## Standard Features:

- Dimensions:
  - 18" long x 4 5/16" wide x 2" deep
  - 9" long x 4 5/16" wide x 2" deep
- Secures 4 or 5 modules (18" long) 4" square pattern or only 2 (9" long)
- 24 gauge steel construction
- Durable galvanized finish
- Wire chase for vertical or horizontal
- Edge protector to eliminate wire cuts
- Mounting hole pattern for wall or cabinet mount

## Multi-Fast Rail Module

The MFR fast rail is designed to be configured to hold 4 or 5 addressable modules (with a 4" square footprint). This rail system, when installed in a proper enclosure eliminates the need for multiple 4" square boxes or even modification of a 4" trough. The MFR replaces all that work with an easy method of assembly for each addressable module.

Each address module is installed with the terminal field connections and address dials easily accessible after installation for serviceability. The MFR is supplied with edge protectors to eliminate wire shorts when pulling wire chases.

The MFR is manufactured from durable 24 gauge galvanized steel and is designed with multiple mounting hole patterns for wall or cabinet mount. Measurements are 18" long x 4 5/16" wide with a depth of 2" with module installed.

The MFR is ideally suited for the Space Age ACE cabinet size A (SSU00655) or D (SSU00657) for a professional installation. Features key access and a lift away removable door to access the address modules and field wiring thus allowing you time saving maintenance and trouble shooting of the system.

## Ordering Info:

|          |                     |
|----------|---------------------|
| SSU00458 | MFR 4/5 Module Rail |
| SSU00462 | MFR 2/3 Module Rail |



**ISO 9001  
REGISTERED  
COMPANY**

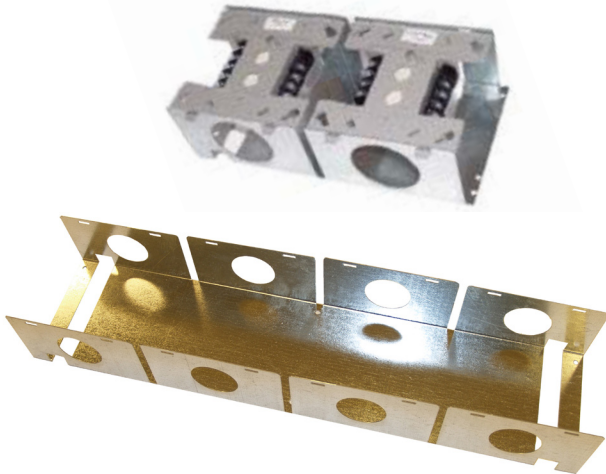


**ACE BOX**

Space Age Electronics, Inc.  
www.1sae.com  
**800.486.1723** Toll Free  
508.485.0966 Local  
508.485.4740 Fax



**NO  
EXCUSES!**



## Fast Rail 2 and 4 Module Holders

The FR2/4 fast rail system is designed to hold from two to four System Sensor style addressable modules with a quick snap in assembly.

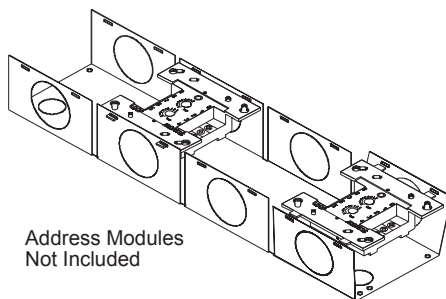
Each address module is installed independently with the terminal field connections and address dials easily accessible after installation for serviceability. The FR4 is supplied with edge protectors to eliminate wire shorts when pulling wire chases.

The fast rails are manufactured from durable 22 gauge galvanized steel and is designed with multiple mounting hole patterns for wall or cabinet mount. Measurements are 4.5" long x 4 5/16" wide x 2 1/2" deep for the FR2 and 18" long x 4 5/16" wide x 2 1/2" deep for the FR4.

The fast rail system is ideally suited for the Space Age ACE cabinet size A (SSU00655) or D (SSU00657) as well as the AC2 cabinet (SSU00656) for a professional installation. The key feature of these cabinets is the key access and a lift away removable door to access the address modules and field wiring thus allowing you time saving maintenance and trouble shooting of the system.

## Standard Features:

- Secures 4 System Sensor modules (4" square)
- Spring loaded snap in design
- 24 gauge steel construction
- Durable galvanized finish
- Wire chase for vertical or horizontal
- Edge protector to eliminate wire cuts
- Mounting hole pattern for wall or cabinet mount



## Ordering Info:

Part # Description

SSU00452 FR2 Fast Rail  
SSU00457 FR4 Fast Rail



**ISO 9001  
REGISTERED  
COMPANY**



This document is subject to change without notice, see doc # ED0479 for legal disclaimer

ED0421

LT10430

Rev.B

1/1

## Optional Cabinets:

ACE A holds 4 FR2 or 2 FR4 rails (SSU00655)  
ACE D holds 8 FR2 or 4 FR4 rails (SSU00657)  
AC2 holds 2 FR2 rails (SSU00656)

**ACE BOX**

Space Age Electronics, Inc.  
www.1sae.com  
**800.486.1723** Toll Free  
508.485.0966 Local  
508.485.4740 Fax

*No Excuses, Just Solutions!*





**NO  
EXCUSES!**

# FP4/5



## Fire Plate 4" Square

The FP4 4" square fire plate is designed to provide quick visual identification of field wiring for the Fire and Life Safety industry. This sturdy cover plate is fabricated of 18 gauge steel with a powder coated red finish. The nationally recognized NFPA fire symbol has been screened on the front with indelible white ink.

An address label on the reverse side of the plate gives the installer a place for noting field identification of the circuits within the junction box.

The FP4 has 4 Keyhole mounting holes to allow the plate to be easily mounted to a standard 4" Square box regardless of that box's orientation. The Key holed configuration allows the installer to easily mount the plate while on a ladder and to remove it as easily.

## Standard Features:

- Packaging available in 10 and 100 quantities
- 18 gauge 4" square cover plates
- Address Label for circuit identification on inside of plate
- FP4 Plate dimensions are 4 3/8" x 4 3/8"
- FP5 Plate dimensions are 4 3/4" x 4 3/4"
- 1" High white FIRE in indelible lettering
- 1 3/4" High white NFPA indelible Fire Symbol
- Durable red powder coat finish



**ISO 9001  
REGISTERED  
COMPANY**

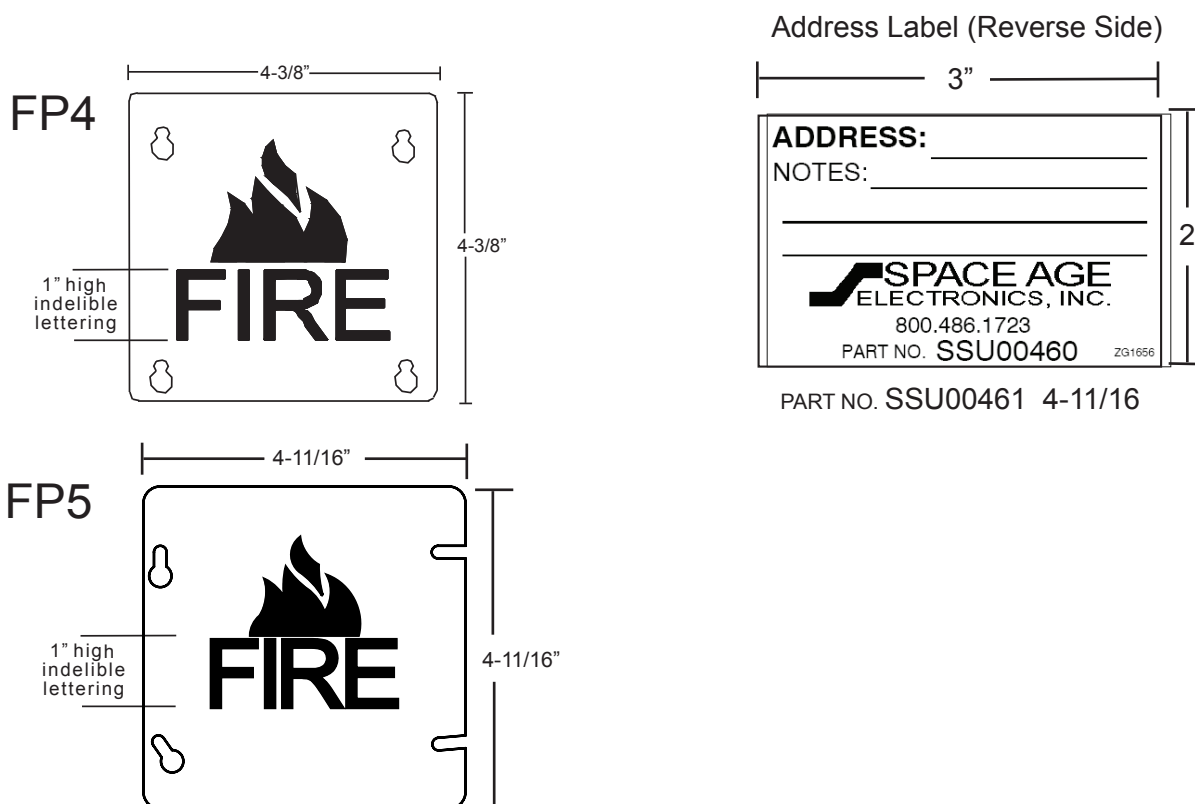


**ACEBOX**

Space Age Electronics, inc.  
[www.1SAE.com](http://www.1SAE.com)  
**800.486.1723** Toll Free  
508.485.0966 Local  
508.485.4740 Fax

## Description:

The FP4 4" fire plate is designed to exceed present and future code compliant regulations allowing for quick identification of field wiring from the nationally recognized NFPA fire symbol screen on the front. The FP4 fire plate can be mounted to any 4 square electrical junction box. Convenient eyelets allow for ease of installation and trouble shooting while assuring that the word "FIRE" is always upright and legible. Address label on reverse side allows for quick and easy circuit identification.



## Specifications:

The FP4/FP5 4" Fire Plate will be made of 18 gauge cold rolled steel and shall have a red powder coated finish. The FP4 4" Fire plate will measure 4 3/8" x 4 3/8". The FP5 4" Fire plate will measure 4 3/4" x 4 3/4". The word Fire will have 1" high lettering and shall have the nationally recognized NFPA fire symbol. The lettering and fire symbol will be screened with white indelible ink. It will have offset screw eyelets for one hand installation and maintenance. These same eyelets will assure that the FIRE legend will always be upright and legible. There will be an address label adhered to reverse side for quick circuit identification.

## Ordering Information:

| Part #   | Description                          |
|----------|--------------------------------------|
| SSU00460 | FP4 4" Square Fire Cover Plate       |
| SSU00461 | FP5 4 11/16" Square Fire Cover Plate |

Note: 4" Square Surface and Extra Deep Appliance box's available see SAB or IGP2R Data Sheets.



Space Age Electronics, inc.  
www.1SAE.com  
800.486.1723 Toll Free  
508.485.0966 Local  
508.485.4740 Fax

*No Excuses, Just Solutions!*

This document is subject to change without notice, see doc # ED0479 for legal disclaimer

ED04074

LT10374

Rev.C

2/2

**NO  
EXCUSES!**



## Fire Alarm Box 4" Square

The FB4 Fire Alarm Box 4" Square is conveniently packaged with everything needed for quick termination of fire alarm circuits. It was designed to aid in minimizing wiring cost and meeting Code Compliant UL 864 Rev. 9, Setc.12.4 Field Wiring Applications and Sect. 89.1.2 Markings and Indication of Connection requirements. The FB4 Box also will meet NEC Code requirements where a junction box is required after 360° degrees of conduit bends. The red finish with NFPA nationally recognized Fire Symbol and rugged construction make this the logical choice for your next job while displaying professionalism and improving system credibility with inspectors and AHJs. This economical kit comes with everything you will need for a quick professional looking installation.

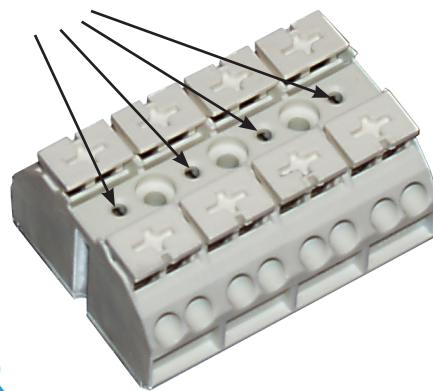


### Standard Features:

- One red 4" square extra deep 16 gauge galvanized steel electrical appliance box
- Dimensions are 4" x 4" x 2 3/4" deep
- Five standard 1/2" & 3/4" EMT knockouts
- One red Fire plate with 1" lettering and NFPA Fire symbol screened with white indelible ink
- Address label for circuit identification
- One 4" square 18 gauge galvanized box bracket
- One 4 point TTS Tool-Less Terminal Strip installed and mounted on a convenient Box Bracket (BB4)

The FB4 is supplied with the SAE Tool-Less terminal blocks, saving you time and effort in your installation. Testing the circuits can be accomplished with the use of the TTS Test Probe in the individual test ports.

When properly installed, there will be no conductors exposed. All circuit testing can be performed via the individual test ports per circuit.



**ISO 9001  
REGISTERED  
COMPANY**



- Uses UL Recognized Components



**ACEBOX**

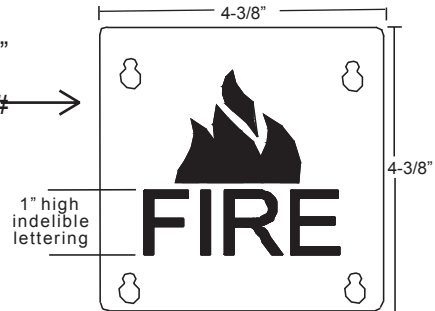
Space Age Electronics, Inc.  
www.1sae.com  
**800.486.1723** Toll Free  
508.485.0966 Local  
508.485.4740 Fax

## Description:

The FB4 Fire Alarm Box 4" Square was designed to incorporate all the products needed for termination of fire alarm circuits. Each package consists of one SAB 4" Square Appliance Box, one TTS Tool-Less Terminal Strip mounted on a BB4 Box Bracket, one FP4 4" Square Fire Cover Plate and two 3/4" Red EMT Connectors. The FB4 Fire alarm box shows the AHJ or inspector that the installation is professional and code compliant, which increases first round sign-offs.

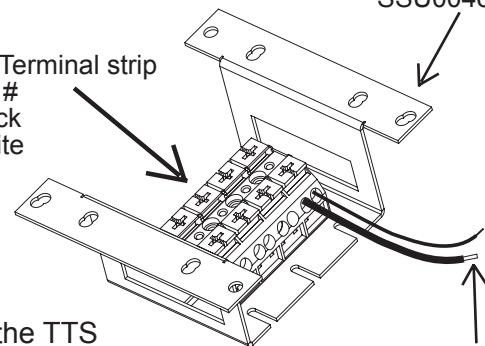
SAB Square Appliance Box  
Accessory part #  
SSU00454

FP4 Fire plate 4" Square  
Accessory part #  
SSU00460



BB4 Box Bracket  
Accessory part #  
SSU00465

TTS Tool-Less Terminal strip  
Accessory part #  
SSU00470 Black  
SSU00471 White



Warning:  
Do not use Aluminum Conductors with the TTS  
Terminals per UL 864 Rev. 9 Sect. 12.4.

20 AWG Stranded under 1 point  
and 12 AWG Solid under 2nd point

## Specifications:

The FB4 Fire Alarm Box 4" Square shall consist of one SAB Extra Deep Square Appliance Box, one BB4 Box Bracket 4" Square, one TTS Tool-Less Terminal Strip and one FP4 Fire Plate 4" Square. The 4" square extra deep appliance box and 4" square Fire plate will have a red powder coat finish. The FB4 Fire Alarm Box 4" Square will have one BB4 Box Bracket 4" square and one 4 Point TTS Tool-Less Terminal strip all mounted inside with UL listed assembly for fire alarm field connections. It will have the NFPA Fire Symbol and 1" Fire screened with white indelible ink and an address label on reverse side of FP4 Fire Plate. It also will contain two 3/4" Red forged steel EMT Conduit Connectors.

**ACEBOX**

Space Age Electronics, Inc.  
www.1sae.com  
800.486.1723 Toll Free  
508.485.0966 Local  
508.485.4740 Fax

## Ordering Information:

| Part #   | Description                  |
|----------|------------------------------|
| SSU00664 | FB4 Fire Alarm Box 4" Square |
| SSU00472 | TTS Test Probe               |





**NO  
EXCUSES!**



## Tool-Less Terminal Strip

The TTS Tool-less Terminal Strip is designed to minimize wiring costs while meeting UL 864 Rev. 9 Sect. 12.4 Field Wiring applications requirements. It allows for quick easy mounting of multiple connection points. The clamp connections can accommodate wire sizes ranging from 20 to 12 AWG, stranded or solid core wire, and can be easily connected by depressing the terminal tab with either a finger or screwdriver, pushing the stripped conductor into the connection point and releasing the terminal tab to secure the wire. Up to four conductors can be connected to each terminal point. There are 4 built in test ports for quick circuit trouble shooting. The terminal strip can mount into the Space Age Electronics, Inc. Accessory cabinets or the BB4 Back Box Bracket (purchased separately) or can be surface mounted.



**Black**  
**P/N: SSU00470**

## Standard Features:

- Each package consists of 1 terminal block
- (2) 4/40 machine screws for mounting
- Accepts 20 to 12 AWG
- Rated for 25A @ 300V and 5A @ 600V
- Measures 2" L X 1-3/8" W X 7/8"H
- Built in test ports for troubleshooting
- Available in black or white.



**White**  
**P/N: SSU00471**



- Uses UL Recognized Components



Made In U.S.A.

**ISO 9001  
REGISTERED  
COMPANY**

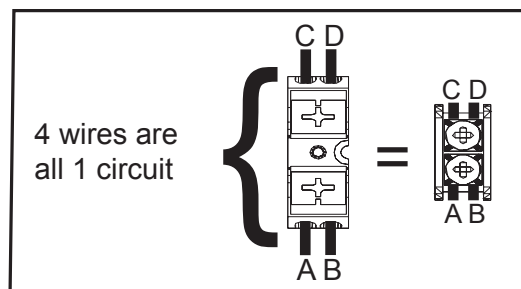
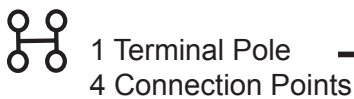
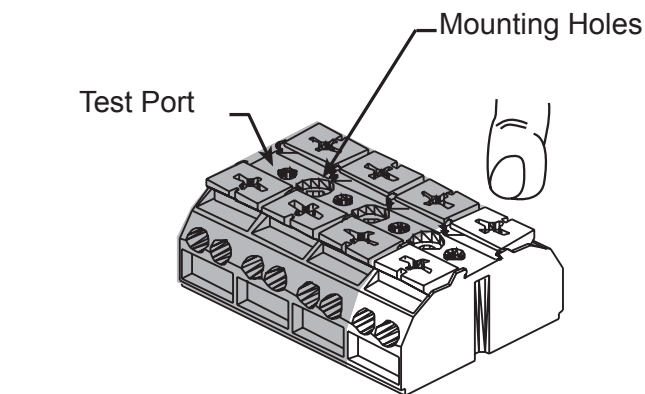
**ACEBOX**

Space Age Electronics, inc.  
www.1SAE.com  
**800.486.1723** Toll Free  
508.485.0966 Local  
508.485.4740 Fax

## Specifications:

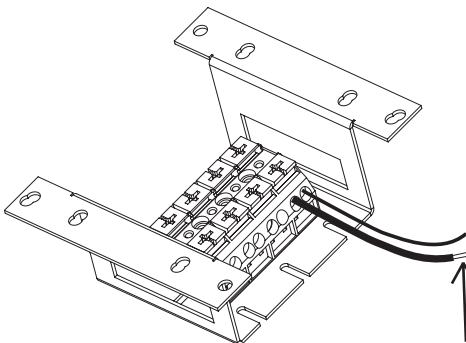
The TTS Tool-Less Terminal Strip will be a UL recognized component. There will be four terminal poles with four quick connection points per terminal pole. It shall accommodate connections of solid or stranded and wire sizes ranging from 20 to 12 AWG. There will be four direct test ports for each pole. It will be available in black or white. It will measure 2" L X 1-3/8" W X 7/8"H. It shall be rated for 25A @ 300V and 5A @ 600V.

The TTS Tool-Less Terminal Strip was designed to improve field termination and installation time while meeting full code compliance and allowing for first round inspection sign off. Built in test ports allow for quick and easy trouble shooting. Available in black or white to help improve circuit identification.



Wires sizes 20-12 AWG  
Stranded or Solid core wire  
4 poles / 16 connection points  
300V @ 20A 600V @ 5A

BB4 4" Sq. Box Bracket  
(SSU00465)



Versatile and strong enough to hold 20 AWG Stranded wire under 1 point and 12 AWG Solid under the second point.

### Warning:

Do not use Aluminum Conductors with the TTS Terminals per UL 864 Rev. 9 Sect. 12.4.

## Ordering Information:

| Part #   | Description                          |
|----------|--------------------------------------|
| SSU00470 | TTS Tool-Less Terminal Strip (Black) |
| SSU00471 | TTS Tool-Less Terminal Strip (White) |

## Accessories:

|          |                           |
|----------|---------------------------|
| SSU00460 | BB4 Box Bracket 4" Square |
| SSU00472 | TTP Tool-Less Test Plug   |



**ACEBOX**

Space Age Electronics, inc.  
www.1SAE.com  
800.486.1723 Toll Free  
508.485.0966 Local  
508.485.4740 Fax

*No Excuses, Just Solutions!*

This document is subject to change without notice, see doc # ED0479 for legal disclaimer

**NO  
EXCUSES!**



# BCA

## Battery Cabinet Accessory

The BCA Battery Cabinet Accessory is designed for the professional installation of systems requiring battery storage and meets the requirement of NFPA 72 (1-5.2.9) standby battery storage for battery backup. The BCA allows for easy access and maintenance of the batteries while also assisting against unnecessary power drain, interference or degeneration of the battery. The unit can be mounted securely to a wall, preventing mechanical injury or damage to other equipment.

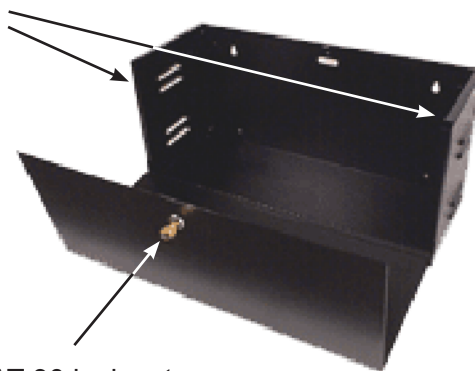


Constructed from heavy duty 16 gauge steel with a full length piano hinged door to allow optimum access to your equipment within the cabinet. Other features include a high security CAT 30 keyed door lock and vented sides. Complete interior and exterior finish is accomplished by a phosphate treatment followed by a durable baked-on textured polyester coating.

## Standard Features:

- 16 Gauge (.062 thk.) cold rolled steel
- Stainless steel piano hinge
- Red or black textured finish
- CAT 30 keyed door lock
- Dimensions:  
22" wide x 10" high x 8 1/2" deep
- Four 1/2" and 3/4" EMT conduit knockouts located on both sides and back
- Wall mounting holes

Vented Sides to  
reduce corrosion



High Security CAT 30 lock set.



**ISO 9001  
REGISTERED  
COMPANY**

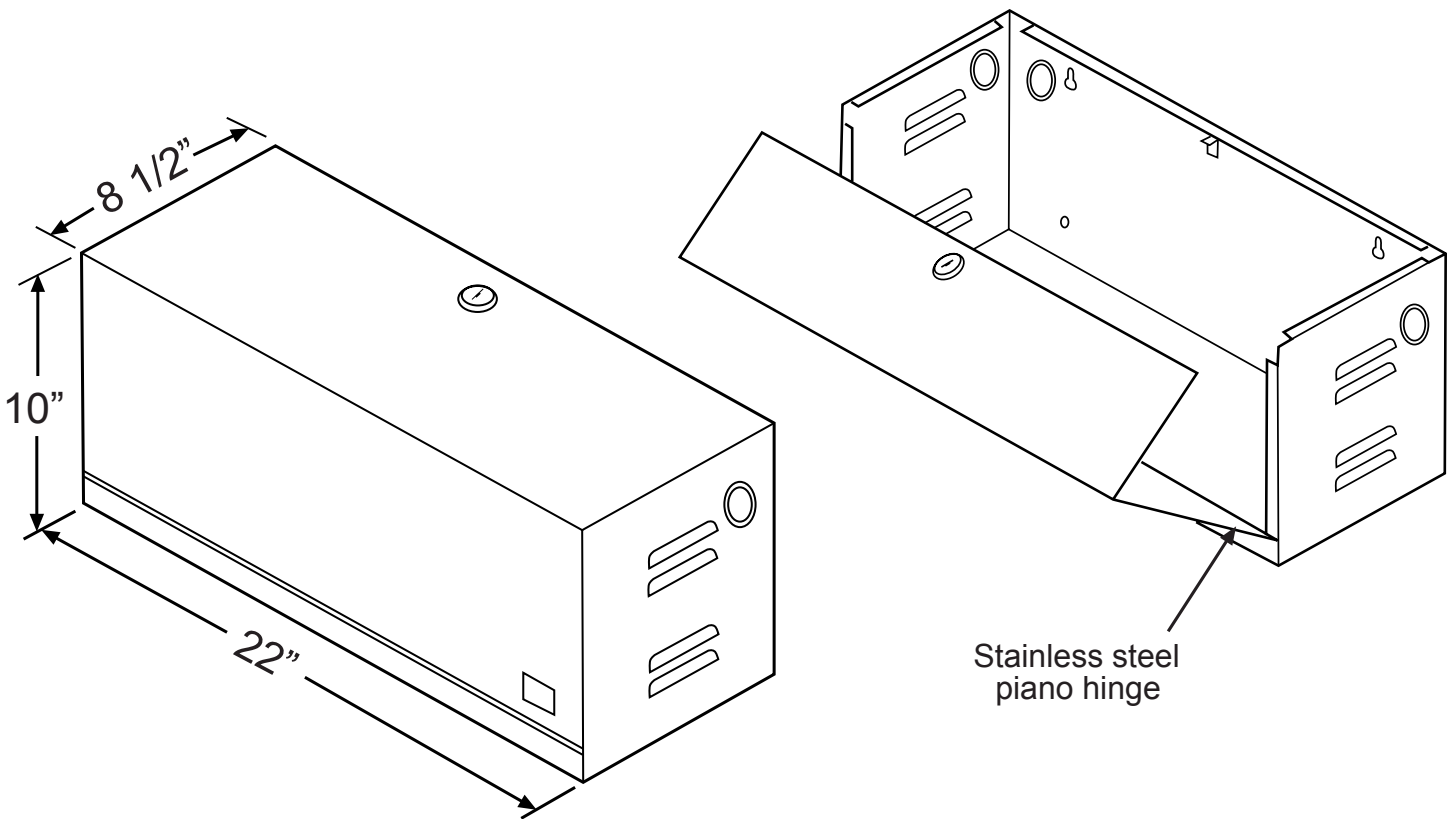


**ACEBOX**

Space Age Electronics, Inc.  
www.1sae.com  
**800.486.1723** Toll Free  
508.485.0966 Local  
508.485.4740 Fax

## Specifications:

The BCA Battery Cabinet Accessory is constructed of 16 gauge (.062 thk.) cold rolled steel and finished with a complete interior and exterior durable red or black textured, heat-resistant baked-on enamel finish. The front cover features a full length stainless steel piano hinge and includes a high security CAT 30 keyed door lock. Overall dimensions measure 22" wide by 10" high by 8 1/2" deep. Four 1/2" and 3/4" EMT conduit knockouts are located on the sides and back. The battery cabinet meets NFPA 72 (1-5.2.9) and the National Electric Code requirements. Batteries not included.



## Agency Approvals:

UOXX.S2580      UL Listed Control Unit Accessories

## Ordering Information:

| Part #   | Description                |
|----------|----------------------------|
| SSU00500 | BCA Battery Cabinet, Red   |
| SSU00501 | BCA Battery Cabinet, Black |

**ACEBOX**

Space Age Electronics, Inc.  
www.1sae.com  
800.486.1723 Toll Free  
508.485.0966 Local  
508.485.4740 Fax

*No Excuses, Just Solutions!*

This document is subject to change without notice, see doc # ED0479 for legal disclaimer

ED0089

LT10011

Rev.D

2/2



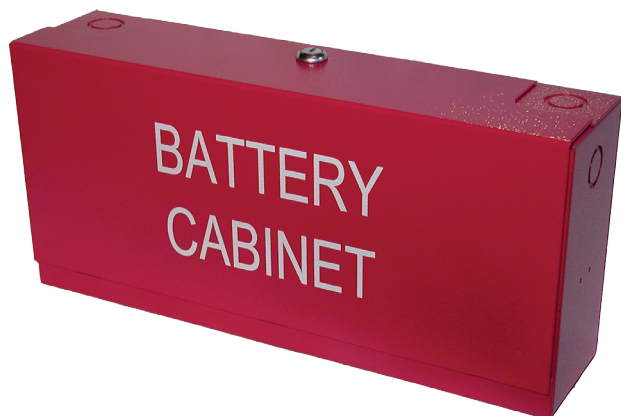
**NO  
EXCUSES!**



## Mini Battery Cabinet

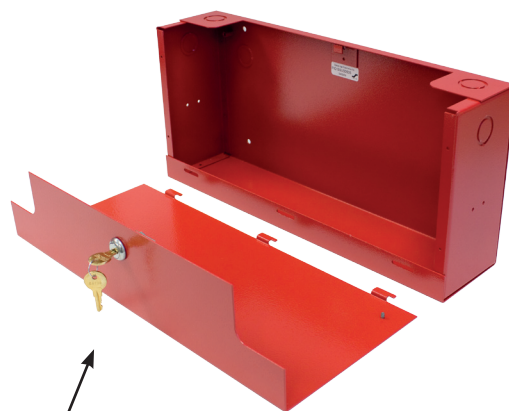
The MBC "BATTERY CABINET" is designed for the professional installation of systems requiring battery storage and meets the requirement of NFPA 72 (1-5.2.9) stand-by battery storage for battery backup.

The MBC allows for easy access and maintenance of the batteries while also assisting against unnecessary power drain, interference or degeneration of the battery. The unit can be mounted securely to a wall, preventing mechanical injury or damage to other equipment.



### Standard Features:

- 16 Gauge (.062 thk.) cold rolled steel
- White 2" lettering "BATTERY CABINET"
- Green ground screw with threaded insert
- Formed lift-a-way hinge
- Red or Black textured finish
- CAT 30 keyed door lock
- Dimensions:
  - 17" wide x 8" high x 4" deep
- Six 1/2" and 3/4" EMT conduit knockouts located on both sides, top and back
- NFPA 72 National Electric Code



The door of the MBC lifts away for worry free wiring and battery change-out.



**ISO 9001  
REGISTERED  
COMPANY**

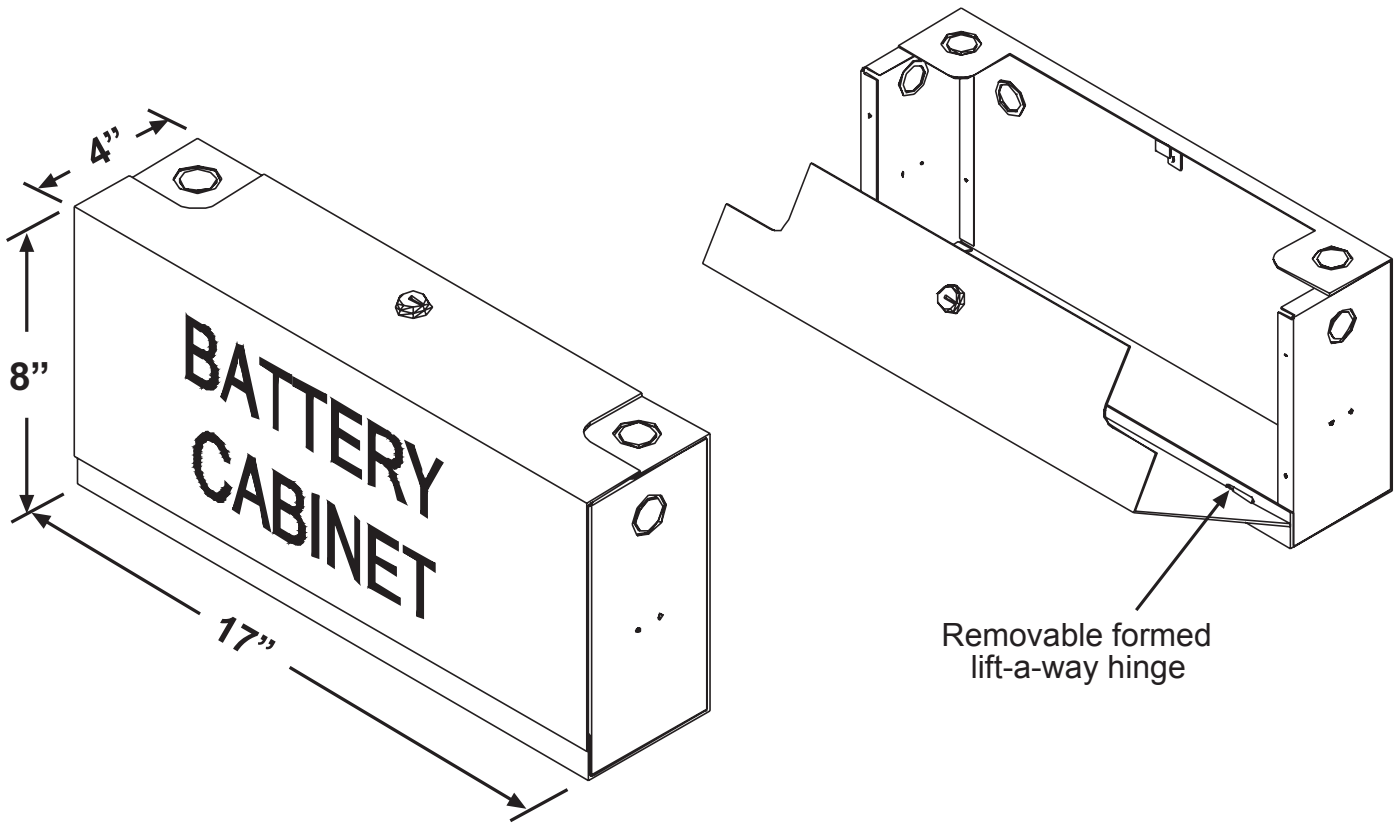


**ACEBOX**

Space Age Electronics, Inc.  
[www.1sae.com](http://www.1sae.com)  
**800.486.1723** Toll Free  
508.485.0966 Local  
508.485.4740 Fax

## Specifications:

The MBC Mini Battery Cabinet is constructed of 16 gauge (.062 thk.) cold rolled steel and finished with a durable red or black textured, heat-resistant baked-on enamel finish. The front cover is engineered with a removable formed lift-a-way hinge, displays "BATTERY CABINET" in 2" white screened lettering and includes a high security CAT 30 keyed door lock. The unit comes with a green ground screw with threaded insert. Overall dimensions measure 17" wide by 8" high by 4" deep. Six 1/2" and 3/4" EMT conduit knockouts are located on both sides, top and back. The battery cabinet meets NFPA 72 National Electric Code requirements. Batteries not included.



## Agency Approvals:

UOXX.S2580

UL Listed Control Unit Accessories

## Ordering Information:

| Part #   | Description                      |
|----------|----------------------------------|
| SSU00505 | MBC Mini Battery Cabinet - Red   |
| SSU00506 | MBC Mini Battery Cabinet - Black |

**ACEBOX**

Space Age Electronics, Inc.  
www.1sae.com  
800.486.1723 Toll Free  
508.485.0966 Local  
508.485.4740 Fax

*No Excuses, Just Solutions!*

This document is subject to change without notice, see doc # ED0479 for legal disclaimer

ED0247

LT10247

Rev.C

2/2

**NO  
EXCUSES!**



# BR2

## Battery Rack

The BR2 Battery Rack allows for elevated, easy access and maintenance of your batteries while also assisting against unnecessary power drain, interference or degeneration of the batteries.

This rack is constructed from heavy duty 16 gauge steel with a durable black baked-on powder coat finish. Four battery rack supports adjust to multiple batteries size requirements. The rack easily assembles and can be mounted securely to the floor and to adjacent Battery Rack(s). Batteries not included.



Space for two large  
60+ AH batteries



## Standard Features:

- 16 Gauge (.062 thk.) cold rolled steel
- Black textured finish
- Dimensions assembled:  
13" wide x 17 1/2" high x 14" deep
- Assembly hardware included
- Floor mounting holes
- Side holes for bolting to adjacent Battery Rack(s)



**ISO 9001  
REGISTERED  
COMPANY**



**ACEBOX**

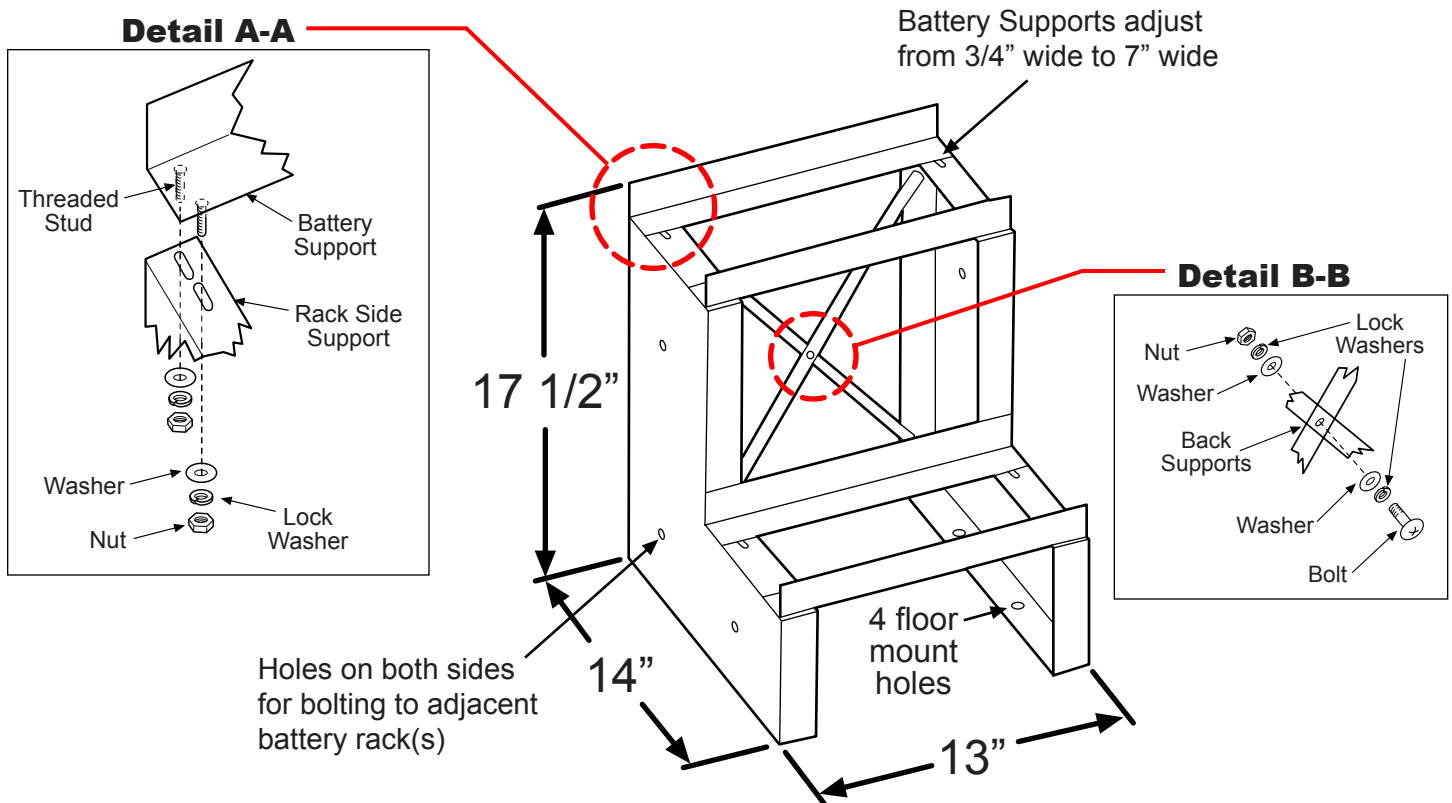
Space Age Electronics, Inc.  
[www.1sae.com](http://www.1sae.com)  
**800.486.1723** Toll Free  
508.485.0966 Local  
508.485.4740 Fax

## Specifications:

The BR2 Battery Rack is constructed of 16 gauge (.062 thk.) cold rolled steel and finished with a durable black textured, heat-resistant baked-on enamel finish. Overall dimensions of the assembled battery rack measure 13" wide x 17 1/2" high x 14" deep. This two-tiered battery rack includes supports that adjust from 5 3/4" wide to 7" wide to accommodate the battery(s). Floor and adjacent Battery Rack mounting holes included. Batteries not included.

## Installation Instructions:

1. Place Battery Supports (4) on top the two tiers of the Rack Side Supports.
2. Attach nuts and washers loosely, (see Detail A-A).
3. Attach the Back Supports (2) together at middle hole of the supports (see Detail B-B).
4. Attach the Back Supports to the rack assembly with the same method as Detail A-A.
5. Tighten all hardware after squaring the assembly.
6. Unit may be bolted to the floor or to an adjacent Battery Rack (hardware not supplied).



## Ordering Information:

| Part #   | Description             |
|----------|-------------------------|
| SSU00200 | BR2 Battery Rack, Black |

**ACEBOX**

Space Age Electronics, Inc.  
 www.1sae.com  
 800.486.1723 Toll Free  
 508.485.0966 Local  
 508.485.4740 Fax

*No Excuses, Just Solutions!*

This document is subject to change without notice, see doc # ED0479 for legal disclaimer

ED0256

LT10360

Rev.D

2/2



**NO  
EXCUSES!**



# FAD

## Fire Alarm Documents

The FAD is the perfect fit to meet the demanding code requirements today. NFPA 72 10.18.2.2.1.8 states that a cabinet must be "prominently labeled 'FIRE ALARM DOCUMENTS'."

This durable 16 gauge steel enclosure with a solid piano hinge and key lock will keep all of your code required documents in one safe place. With a 2GB USB flash drive it stores your fire alarm software safely and securely eliminating the occurrences of the software not being on site when technicians arrive to service the system. Along with your fire alarm software you can store your test & inspection documents, service records, manuals & as built drawings for the system. Using a standard USB B connector it allows you to plug in with any standard USB printer cable to upload or download information.

The FAD is designed to hold critical manuals and documents with a durable steel sleeve. It has designated hooks to organize key rings and hold important business cards for easy access and reference. Inside the cover it has a organized note table that allows for documentation for passwords and other critical system information. The steel sleeve can be easily removed to hold a 1.5" three ring binder.

The innovation of a single gang cutout inside the box to implement the Infinity line products with conduit knockout access enables you to provide other system functions for test and inspection. See the complete Infinity product line from Space Age Electronics for single gang electrical product solutions.

## Standard Features:

- Installed with a 2 gig digital flash drive with USB B connector
- 2 Key ring hooks to hold system keys
- Business card holder for key contacts
- Overall Dimensions are 12" x 13" tall and 2 1/4" deep
- 16 gauge steel box and cover for security
- Durable powercoat baked on finish other colors available
- Standard 3/4" cat 30 key lock other lock assemblies available
- Solid stainless steel piano hinge
- Permanently screened white ink 1" high "Fire Alarm Documents"
- Legend sheet for passwords and system information



**ISO 9001  
REGISTERED  
COMPANY**



**ACEBOX**

Space Age Electronics, Inc.  
www.1sae.com  
**800.486.1723** Toll Free  
508.485.0966 Local  
508.485.4740 Fax



**NO  
EXCUSES!**



# FDB

## Fire Document Box

The FDB is the perfect fit to meet the demanding code requirements today. NFPA 72 10.18.2.1.2.8 states that a cabinet must be "prominently labeled 'FIRE ALARM DOCUMENTS'."

An internal galvanized sleeve holds the documents safely and securely. The sleeve is easily removable to allow storage of a 1.5" 3 ring binder or other media. The galvanized sleeve also contains 2 hooks for key rings or thumb drives, a place for several business cards, a cutout for a 1.4 Oz. can of test gas and a slot where a standard CD "jewel" case can be stored. Access to the documents is via a high security lock with a 3/4" barrel.

## Standard Features:

- Overall Dimensions are:  
12" Wide x 13.1" High x 2.25" Deep
- 3/4" barrel lock to secure door
- Piano Hinged Door w/Notes Sticker
- Removable document holder can hold 1" of 8.5" x 11" paperwork
- Powder Coat Red Finish
- 16 Gauge CRS construction
- Embossed:
  - Key Ring Hooks
  - Business Card Holder
  - CD Case Slot
- 1.4 Oz. can of detector smoke
- Custom screening with your logo

Key Ring  
Hooks

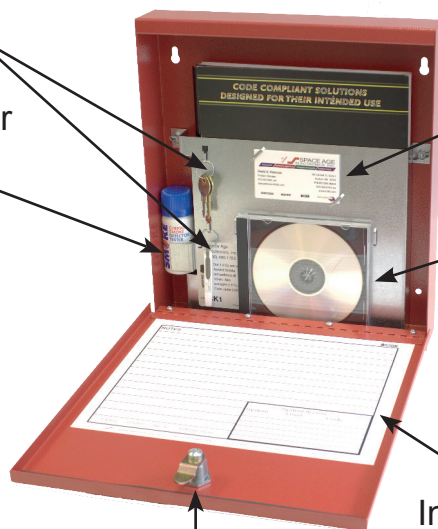
Detector  
Smoke

Business  
Card Holder

CD Jewel  
Case

Installation &  
Inspection Notes

Lock w/ 3/4" barrel



ISO 9001  
REGISTERED  
COMPANY



**ACEBOX**

Space Age Electronics, Inc.  
www.1sae.com  
800.486.1723 Toll Free  
508.485.0966 Local  
508.485.4740 Fax



## Specifications:

The Fire Document Box (FDB) shall be constructed of 16 gauge cold rolled steel (CRS); it shall be painted with a durable red powder coat paint. The front door shall be lettered with the words "FIRE ALARM DOCUMENTS" in White indelible letters 1" in height. The door of the FDB shall be locked with a keyed lock, 3/4" barrel. The cabinet shall contain a 16 gauge galvanized CRS sleeve. This sleeve shall allow for the storage of 1" of paper, test and inspection records, manuals and other important documents. The sleeve shall also facilitate the hanging of key rings and thumb drives (for data storage) along with business cards and space for a CD "jewel" case. The unit shall also contain a 1.4oz can of smoke detector test gas. Adheared inside the door shall be a "Notes" label for the recording of valuable information such as AHJ approvals, various system codes and the location of hard to find devices.

If so desired, the internal sleeve (held in by 2 wing nuts) may be removed and the space used to insert a 1.5" 3 ring binder.



Notes Sticker inside FDB Door

### Ordering Information:

| Part # | Description |
|--------|-------------|
|--------|-------------|

**SSU00672 FDB Fire Document Box****SSU00673 FDB Custom Logo/lock**

(ask for Form FD10498 to order custom box)

**CK1 Replacement 1.4 Oz Test Gas**



Space Age Electronics, Inc.  
www.1sae.com  
**800.486.1723** Toll Free  
508.485.0966 Local  
508.485.4740 Fax

*No Excuses. Just Solutions!*

This document is subject to change without notice, see doc # ED0479 for legal disclaimer

ED0447

LT10505

Rev.A

2/2

**NO  
EXCUSES!**



# DSB

## Drawing Storage Box

The DSB (Drawing Storage Box) is an ideal solution to safely secure your critical building emergency plans such as evacuation and building layout drawings. In the event of an emergency, you are assured that responders will have immediate access to the proper drawings and information required. A critical and responsible component to any EOP (Emergency Operation Plan).

The DSB (Drawing Storage Box) is engineered using 18 gauge cold rolled steel and coated with a durable RED epoxy powder coat finish. A full length stainless steel hinge provides a long lasting durable construction. One inch tall lettering silk-screened with permanent white indelible ink on 2 sides provides a full 180 degrees of viewing for immediate identification to emergency responders.

The DSB (Drawing Storage Box) securely holds up to a 4" diameter 36" tall Architectural roll of drawings. With an industry standard key lock, the cabinet provides secure storage from improper access or removal of critical documentation. An additional retainer inside the box holds drawings securely upon opening the door. This cabinet also allows space to store other critical disks, USB drives, keys and contact information for the system.



← Business card slots

← Velcro strap

← Tab for hanging keys or USB drives

## Standard Features:

- **Dimensions: 37" tall x 5 1/2 x 4 1/4 deep**
- **Durable steel 18 gauge construction**
- **Continuous stainless steel hinge**
- **Color red, powder coat texture finish**
- **1" white indelible lettering**
- **Standard key lock to secure documents**
- **Hold a 4" dia 36" long roll of drawings**
- **Storage locations for digital media, keys and contacts**



**ISO 9001  
REGISTERED  
COMPANY**



**AcceBOX**

Space Age Electronics, Inc.  
www.1sae.com  
**800.486.1723** voice  
508.485.0966 direct  
508.485.4740 fax

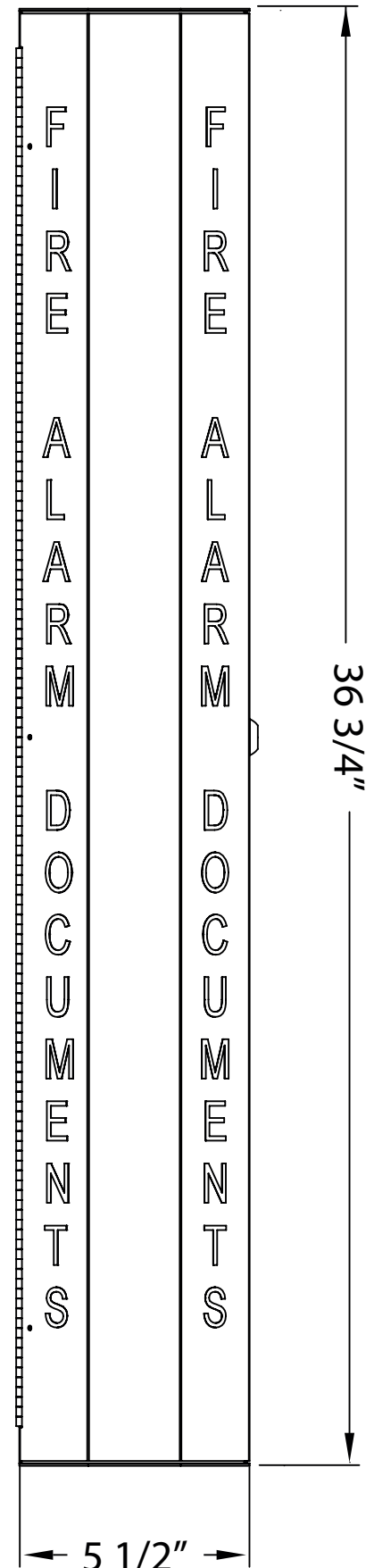


## Specifications:

The Drawing Storage Box (DSB) shall be constructed of 18 gauge cold rolled steel (CRS), it shall be painted with a durable red powder coat paint. Over all dimensions 37" tall 5 1/2" wide and 4 1/4" deep. The access door shall be lettered on 2 angled sides of the cabinet providing 180 degrees of viewing. "FIRE ALARM DOCUMENTS" in White indelible letters minimum of 1" in height. The door shall have a stainless steel continuous piano hinge. The door of the DSB shall be locked with a keyed lock 3/4" barrel. Inside the cabinet shall have a strap to secure drawing in cabinet that is adjustable for size of rolled drawings. Location to hold keys and secure emergency contact information safely inside cabinet for easy access.

## Ordering Information:

|                 |                                  |
|-----------------|----------------------------------|
| <b>Part #</b>   | <b>Description</b>               |
| <b>SSU00625</b> | <b>Drawing Storage Box (DSB)</b> |


**ACEBOX**

Space Age Electronics, Inc.  
 www.1sae.com  
 800.486.1723 Toll Free  
 508.485.0966 Local  
 508.485.4740 Fax

**NO  
EXCUSES!**



## As Built Drawings Cabinet

The DBX "AS BUILT DRAWINGS" Cabinet offers the convenience of having building layouts and alarm documents readily accessible for fire departments and other authorized personnel.

This surface mount cabinet is fabricated from 16 gauge steel with a durable, baked on, red textured powder coat finish, white 1" high lettering and features a stainless steel piano hinge and a high security CAT 30 keyed door lock.



### Standard Features:

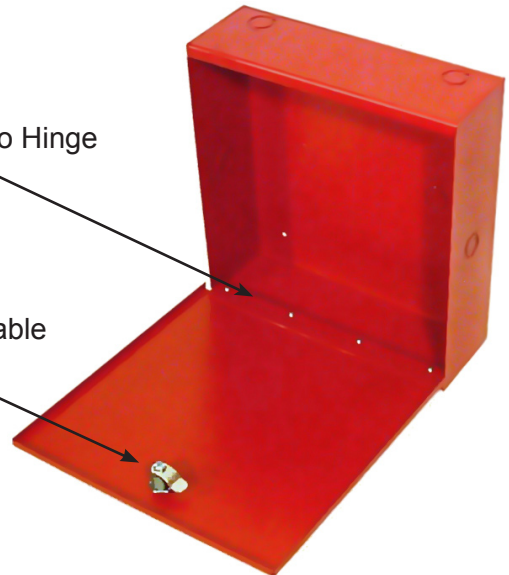
- 16 gauge steel construction
- Durable red textured finish
- White 1" indelible lettering "AS BUILT DRAWINGS"
- Stainless steel piano hinge with CAT 30 keyed door lock
- Surface mount box
- Wall mounting holes

### Options:

- Custom finish
- Custom legend
- Custom lock
- Flush Flange

Stainless Steel Piano Hinge

Custom Locks Available



Available in Sizes  
AA, A & D



**ISO 9001  
REGISTERED  
COMPANY**



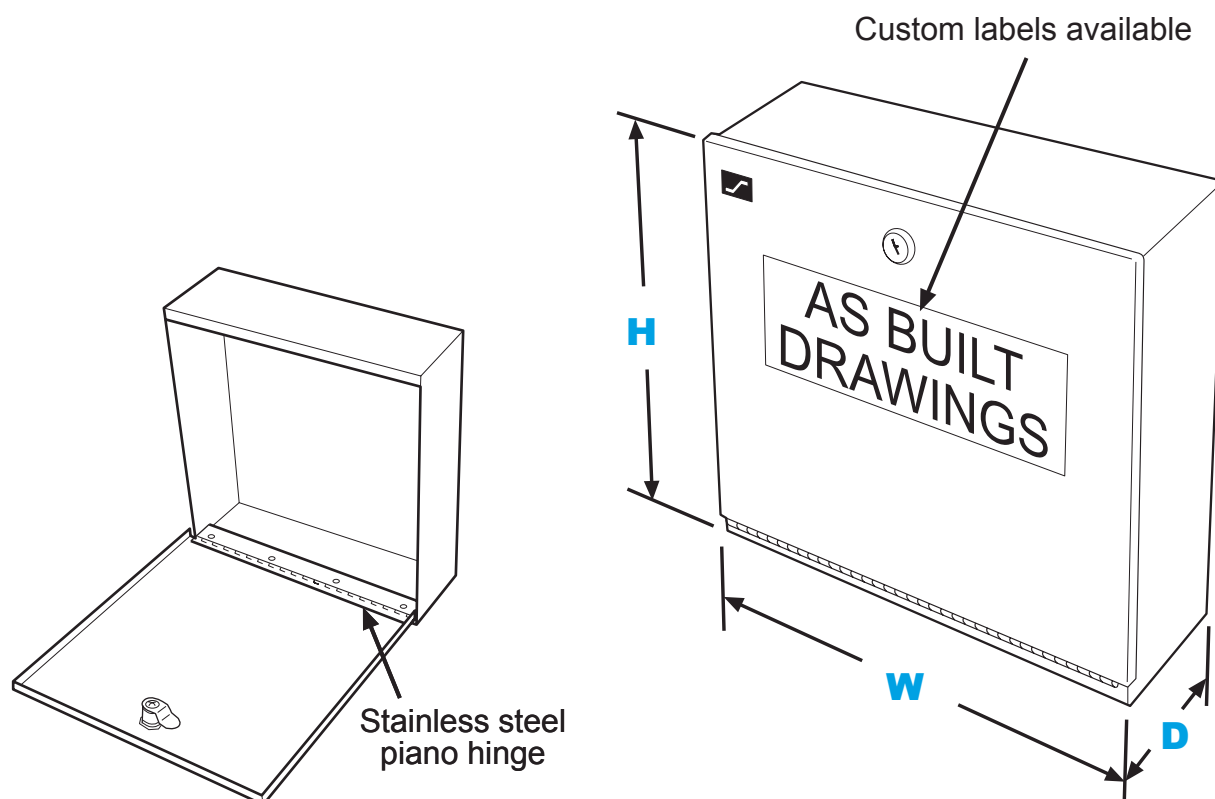
**ACE BOX**

Space Age Electronics, Inc.  
[www.1sae.com](http://www.1sae.com)  
**800.486.1723** Toll Free  
508.485.0966 Local  
508.485.4740 Fax

## Specifications:

The DBX As Built Drawings Cabinet is constructed of 16 gauge (.062 thk.) cold rolled steel and finished with a durable red textured, heat-resistant baked-on enamel finish. The front cover includes a durable label displaying "AS BUILT DRAWINGS" in 1" white indelible lettering, applied to the cover relative to the orientation of the installed back box. The front cover features a high security CAT 30 keyed door lock. Custom finish, legend and lock available. Back box universal surface mount design and wall mounting holes.

| Size | Dimensions of Cabinet |         |    |
|------|-----------------------|---------|----|
|      | W                     | H       | D  |
| AA   | 12 1/4"               | 14 1/4" | 4" |
| A    | 26 1/4"               | 14 1/4" | 4" |
| D    | 26 1/4"               | 23 5/8" | 4" |



## Ordering Information:

| Part #   | Description                          |
|----------|--------------------------------------|
| SSU00674 | DBXAA As Built Drawings Cabinet, Red |
| SSU00677 | DBXA As Built Drawings Cabinet, Red  |
| SSU00678 | DBXD As Built Drawings Cabinet, Red  |
| SSU00680 | DBXA Semi Flush Flange, Red          |
| SSU00681 | DBXD Semi Flush Flange, Red          |

**ACEBOX**

Space Age Electronics, Inc.  
 www.1sae.com  
 800.486.1723 Toll Free  
 508.485.0966 Local  
 508.485.4740 Fax

*No Excuses, Just Solutions!*

This document is subject to change without notice, see doc # ED0479 for legal disclaimer

ED0132

LT10045

Rev.F

2/2

**NO  
EXCUSES!**



## Pull Station Back Box

The Pull Station Back Box (PSB) is a two (2) piece unit that allows the installer to mount a standard Fire Alarm Manual Pull Station to a typical Aluminum or Steel framed glass wall.

The two piece unit is manufactured of tough 16 gauge CRS and is painted Red, White, Black or Bronze and has a "FIRE" sticker that once applied can be seen through the glass alerting passers-by of the presence of this Life Safety device.

The back unit has a standard "device mount" hole spacing and an oversized wiring pull through hole; while the front cover has an industry standard 'Single Gang' mounting configuration to facilitate most Manual Stations' mounting requirements.

The PSB can be used for non-fire applications as well. Any device that maintains the standard single gang footprint will fit on the front cover of this versatile enclosure. Devices like Card Readers, Motion Detectors, CO Detectors, Flashing Lights or Strobes.

## Standard Features:

- Convenient two piece construction
- Red, White, Black and Bronze color
- "FIRE" Sticker supplied for each unit
- 16 Gauge CRS construction made in the USA
- Oversized design for ample wiring space and Addressable Point Module mounting



**ISO 9001  
REGISTERED  
COMPANY**



**ACEBOX**

Space Age Electronics, inc.  
[www.1SAE.com](http://www.1SAE.com)  
**800.486.1723** Toll Free  
508.485.0966 Local  
508.485.4740 Fax

## Specifications:

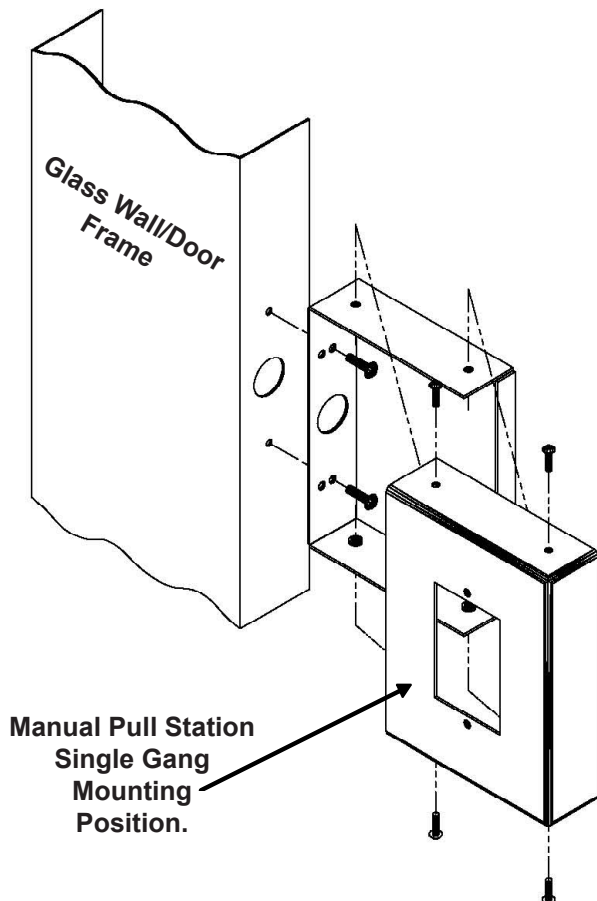
The Space Age Electronics' PSB is a 6 " High x 4.5" Wide x 1.5" Deep, 2 piece assembly that allows for the proper installation of a Manual Pull Station, or other such device that maintains a "Single Gang" mounting footprint, to the side of a steel or aluminum channel framed glass wall.

The PSB has a .835" hole to route wiring through and two double mounting holes used to secure the back box to the frame. The spacing of the two mounting holes that secure the PSB back box to the wall framework is 3.87" or the standard single gang device mount spacing. Double mounting holes keep the space between the PSB and the glass to a minimum.

The mounting for the Manual Pull Station is standard single gang device mount spacing.

The back box comes in Red, White, Black and Bronze colors and is supplied with 4 6x32 screws for securing the front cover to the back of the unit (4 threaded holes, 2 on the top edge and 2 along the bottom). The Manual Station (or other device) is secured by two 6x32 screws into threaded inserts on the front cover.

The PSB is made of 16 gauge CRS and Powder Coated for durability at Space Age Electronics, Inc.



## Installation:

- If required, affix FIRE Sticker to back of the back unit.
- Attach back unit to frame by holding against the glass and choosing the correct set of double mounting holes to secure the unit to the frame.
- Pull wire through oversized wire entry hole.
- Mount Manual Station to the front of the cover unit .
- Connect wiring to Manual Station and slide cover unit over back unit and secure with 4 supplied screws
- Test per applicable codes

## Ordering Information:

| Part #   | Description |
|----------|-------------|
| SSU03171 | Red PSB     |
| SSU03172 | White PSB   |
| SSU03173 | Black PSB*  |
| SSU03174 | Bronze PSB* |

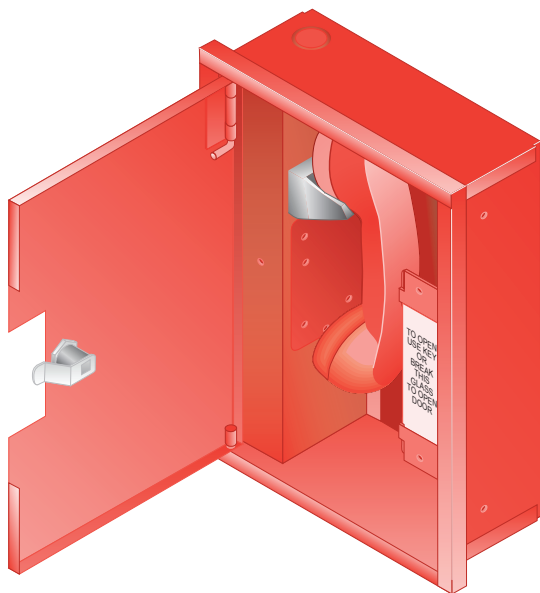
\* = Special Order, non-stocking part.

**ACEBOX**

Space Age Electronics, inc.  
www.1SAE.com  
800.486.1723 Toll Free  
508.485.0966 Local  
508.485.4740 Fax



**NO  
EXCUSES!**



## Emergency Telephone Cabinet

The ETC Emergency Telephone "Warden Station" provides two-way emergency telephone communication between firefighters and other authorized personnel in a high-rise application.

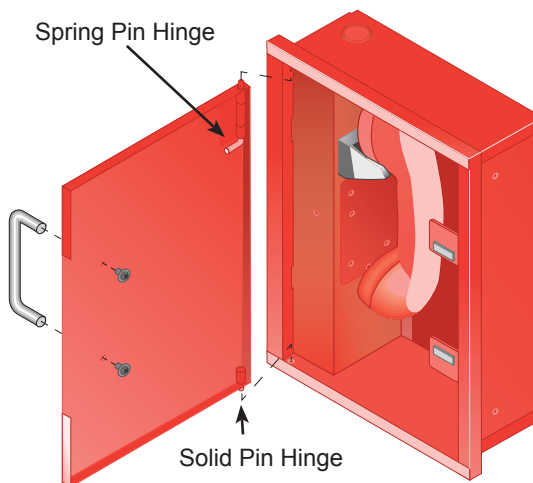
Universally compatible, standard telephone components make this unit easily integrated with systems that have addressable (Digital) or zoned (Analog) telephone circuits in a single flexible product package.

An LED, indicating that the handset has been lifted from the cradle and the telephone is ready for use is standard on the ETC.

The ETC has a red epoxy finish with enhanced graphics in white indelible ink permanently marked for identification. Optional surface or flush mounting with no visible hardware.

### Standard Features:

- Durable red finish & 16 gauge steel construction
- Surface or flush back box
- Slide pin for removing and installing the door without tools
- Clinch type terminals for field wiring
- Key lock, Magnetic Catch or Break Glass access
- NYC Approved Warden Station magnet latch door with handle (see Right)
- Overall dimension 10"x 13.75" x 4" deep (meets ADA)
- "Connect" LED indicates connection to common talk circuit.



Each cabinet can be custom assembled as required using standard options.

For example:

Coiled Cord  
Armored Cable

Break Glass Door  
Magnetic Catch Door  
Key Locked Door

Surface Back Box  
Flush Back Box

This NYC Approved configuration shows pull handle hardware which magnetically latches closed.



Space Age Electronics, Inc.  
[www.1sae.com](http://www.1sae.com)  
**800.486.1723** Toll Free  
508.485.0966 Local  
508.485.4740 Fax

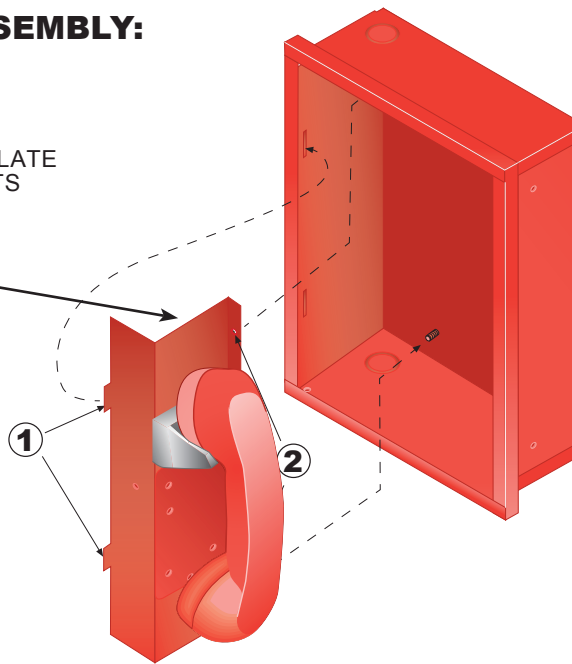
## Specifications:

The ETC Emergency Telephone Cabinet is manufactured from 16 gauge steel and has a durable epoxy red finish. Cover shall have 1" high lettering for easy identification with permanent white indelible ink. The phone cradle switch is required to be a sealed micro switch based mechanism with contacts for internal functionality and a Form A contact for customer use (see Wiring). The phone cabinet shall have a removable door with finger slide pins for improved service and functionality. The hand set shall be red with option of a coiled cord or armored cable. Field connections shall be required to be terminated to a raised clamp terminal clearly marked for its purpose. Overall dimensions are 10" x 13.75" x 4" deep and meets the ADA depth for surface mount protrusion. The Emergency Telephone Cabinet shall be UL listed device and shall be model ETC by Space Age Electronics, Inc. The DC resistance of the ETC's Transducer shall not exceed 150 Ohms of Impedance and the ETC's Microphone has 100 Ohms of Impedance.

### INSERT PLATE ASSEMBLY:

- ① INSERT PLATE ASSEMBLY TABS
- ② SECURE INSERT PLATE WITH 6-32 HEX NUTS

A Space Age Mini Module Bracket (MMB SSU00459) can be mounted to two studs on the reverse side of the ETC Phone Cradle assembly. This allows for the monitoring of the micro switch contacts by a Honeywell addressable Mini Module.



Installation and wiring should be performed by qualified personnel only. Equipment damage and/or malfunction may result from improper installation. Remove all power from the system until the installation is complete and ready for testing. All work of any kind shall be performed to meet the requirements of any and all local, state and federal codes and/or standards set by the authority having jurisdiction.

## Digital Telephone Communications:

Analog phone signals are based on voltage and current, "old school", the phone works because we send a modulated signal over a pair of wires and it eventually causes a membrane to vibrate mimicking the sound of the transmitter at the receiver.

Digital phone Signals are created when the pulsed or modulated analog signal is received by a electrical circuit and is translated into a Digital signal, not voltage and current, but pulses and is heard at the receiving phone. Since there is no voltage drop or "noise" that can be induced into the digital signal, the signal can travel longer faster and clearer than the old long distance analog signals.



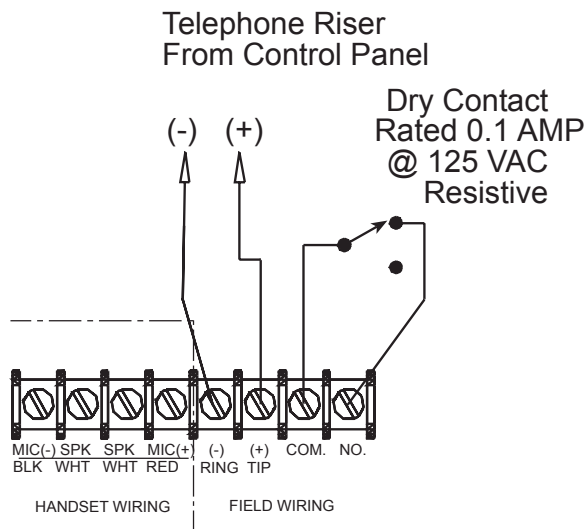
Space Age Electronics, Inc.  
www.1sae.com  
**800.486.1723** Toll Free  
508.485.0966 Local  
508.485.4740 Fax

## Electrical Specifications:

|                |                          |
|----------------|--------------------------|
| ETC Transducer | 150 Ohms impedance       |
| ETC Microphone | 100 Ohms Impedance       |
| Micro Switch   | .01Amp @ 24VAC Resistive |

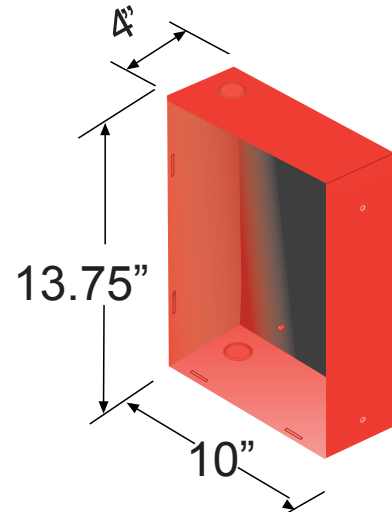
## Wiring:

Telephone Riser from Control Panel

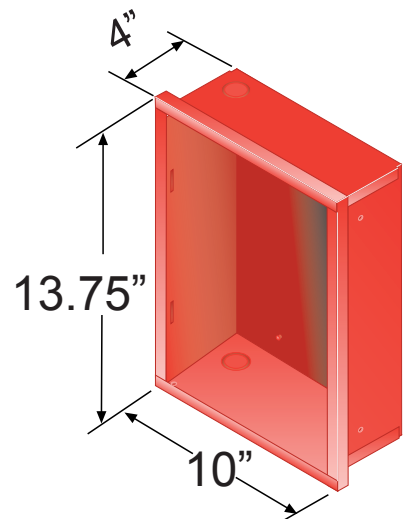


TYPICAL CONNECTIONS  
TO TERMINAL STRIP

## Back Box Overall Dimensions:



Surface Mount Box  
Foot print on wall measures  
10"W x 13.75"H x 4"D



Flush Mount Box  
Foot print on wall measures  
9.25"W x 12.85"H x 3.38"D

## Ordering Information:

| Part #   | Description                                |
|----------|--|
| SSU00535 | ETC Cabinet Cover Assembly (See Back Page) |
| SSU00531 | ETC 1" Extension Flange - Red              |
| SSU00530 | Flush Box - Red                            |
| SSU00532 | Surface Box - Red                          |
| SSU00533 | Replacement Break Glass Assembly           |
| SSU00459 | Mini Module Bracket                        |

## ETC Emergency Cabinet Listings:

UOXX.S2580 UL Listed Control Unit Accessories

MEA Number 108-01-E

Follow these steps for Space Age Electronics to generate a preliminary quote for your ETC Emergency Telephone quote or try our free on-line Product Quote Pages at [www.1SAE.com](http://www.1SAE.com)

## 1 QUANTITY (total number of Emergency Telephone Cabinets needed)

Determine the quantity of Emergency Telephone Cabinet(s) that are needed for your facility(s). This assumes all ETCs needed will be of the same configuration (see Step 2 for available options). If you are in need of different ETC configurations, please submit separate quotes for an accurate determination of your product needs.

## 2 CONFIGURATION

Determine the configuration details for your ETC Emergency Telephone Cabinet that is needed

### Back Box

Check selections:

- ☐ ETC back box Flush RED back box
- ☐ ETC backbox Surface RED back box
- ☐ ETC 1" extension flange retro/cover ring (Flush box only)
- ☐ ETC replacement glass kit

Code **A** ETC phone handset option. Check only one:

- ☐ AX ETC Armored cord/Std handset Red
- ☐ AP ETC Armored cord/ Push to Talk Red handset
- ☐ AV ETC Armored cord/ Volume control Red handset
- ☐ CX ETC Coil cord/Std handset Red
- ☐ CP ETC Coil cord/ Push to Talk Red handset
- ☐ CV ETC Coil cord/ Volume control Red handset
- ☐ AB ETC Aromred cord w/PTT Phone
- ☐ CB ETC Coil cord w/PTT phone

Code **B** ETC cover/image option. Check only one:

- ☐ FW Fire Warden Cover Magnet Latch w/Handle
- ☐ BG ETC Break Glass & Emergency Screening
- ☐ BX ETC Break Glass & No Screening
- ☐ BF ETC Break Glass & Fire Fighters Screening
- ☐ SL ETC Solid Door W/Lock & Emergency Screening
- ☐ SX ETC Solid Door w/Lock & No Screening
- ☐ MD ETC Solid Door, Magnet Latch & Emerg. Screening
- ☐ MX ETC Solid Door, Magnet Latch & No Screening

Code **C** ETC Key lock Assembly. Check only one:

- ☐ C CAT 30 (Simplex B Key)
- ☐ P PK 625 (FCI Key)
- ☐ T T 45 (Siemens)
- ☐ Z Custom Lock and Key

Code **D** ETC Break Glass Message. Check only one:

- ☐ S Standard Image Instructions
- ☐ Z Custom Message and Instructions
- ☐ X No Glass Installed

Emergency Phone Cabinet Order Code:

ETC -      -      -      -       
A B C D

**ACEBOX**

Space Age Electronics, Inc.  
[www.1sae.com](http://www.1sae.com)  
**800.486.1723** Toll Free  
 508.485.0966 Local  
 508.485.4740 Fax

A, B, C & D in the code corresponds to the steps in the four boxes above. Fill in the Alpha Codes next to your check marks to create the part number for your custom application.

*No Excuses, Just Solutions!*

This document is subject to change without notice, see doc # ED0479 for legal disclaimer

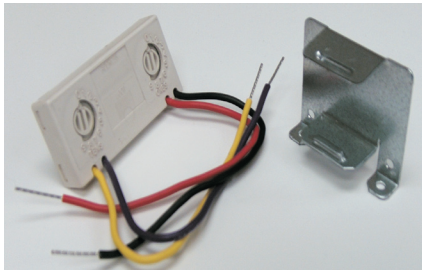
ED0100

LT10358

Rev.B

4/4

**NO  
EXCUSES!**



## Mini Module Bracket

The MMB is a bracket engineered to “Hard Mount” the smaller Honeywell “Mini Module” Addressable Monitoring Modules. This Bracket can hold both Clip and Flash Scan protocol units.

Each bracket holds one Mini Mod and can be mounted in one of several positions due to the multiple hole configurations on the bracket.

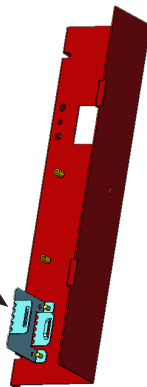
Made of sturdy 18 gauge galvanized cold rolled steel the brackets measure 1.75” H x 2.75” W x 1” D.

This bracket makes easy and clean work of mounting these units into systems (for example those systems that need the Mini Mods for Class A operation or for simple monitoring of auxiliary systems such as Security, Agent Release panels Positive Feedback from Fans/Dampers, etc...)

The MMB is ideally suited for use in the Space Age IF, TC and ACE Series Cabinets, as well as the FB4 Fire Box unit.

The ETC Emergency Telephone Cabinet phone bracket has studs added to accommodate the installation of an MMB. The associated Mini Module is used for supervising the condition of the phone cradle and to initiate connection to the Fire Fighter’s Phone.

MMB Bracket mounts to the reverse side of the ETC Phone Cradle assembly.



## Standard Features:

- Mounts behind Manual Stations, Heat Detectors, Etc...
- Secures one (1) Honeywell “mini-module” addressable device
- Spring loaded slide-in design
- 18 gauge steel construction
- Durable galvanized finish

## Ordering Information:

| Part #   | Description         |
|----------|---------------------|
| SSU00459 | Mini Module Bracket |



**ISO 9001  
REGISTERED  
COMPANY**



**ACEBOX**

Space Age Electronics, inc.  
www.1SAE.com  
**800.486.1723** Toll Free  
508.485.0966 Local  
508.485.4740 Fax





**NO  
EXCUSES!**



## Firefighter Phone Cabinet

The FPC Firefighter Phone Cabinet offers convenient storage of Portable Handsets (SSU00550 & 551). The FPC are available in two sizes, "A" or 5 phone and "D" or 10 phone.

When mounted alongside an "As Built" Drawing Cabinet (SSU00677) the firefighter can locate a phone and the "as built" drawings all in one location.

This surface mount cabinet is fabricated from 16 gauge steel with a durable, baked on, red textured powder coat finish, white 1" lettering and features a stainless steel piano hinge and a high security CAT 30 keyed door lock.

## Standard Features:

- 16 gauge steel construction
- Durable red textured finish
- White 1" indelible lettering "EMERGENCY TELEPHONE HANDSETS"
- Stainless steel piano hinge with CAT 30 keyed door lock
- Surface mount box
- Wall mounting holes



## Ordering information:

| Part#    | Description                    |
|----------|--------------------------------|
| SSU00566 | FPCA Firefighter Phone Cabinet |
| SSU00567 | FPCD Firefighter Phone Cabinet |

## Cabinet Specs:

| Cabinet | Width   | Height  | Depth |
|---------|---------|---------|-------|
| FPCA:   | 3 1/2"  | 13 1/8" | 4"    |
| FPCD:   | 23 1/2" | 23 5/8" | 4"    |

## Agency Approvals:

UOXX.S2580 UL Listed Control Unit Accessories



**ISO 9001  
REGISTERED  
COMPANY**



**ACEBOX**

Space Age Electronics, Inc.  
www.1sae.com  
**800.486.1723** Toll Free  
508.485.0966 Local  
508.485.4740 Fax

This document is subject to change without notice, see doc # ED0479 for legal disclaimer

ED0335

LT10370

Rev.A

1/1

*No Excuses, Just Solutions!*



NO  
EXCUSES!



## Portable Firefighter Handset

The PHR Portable Handset with 1/4" plug is designed to be used with the FPJ and SST Firefighter's Phone Jacks. The PHR allows the firefighter to move from one location to another and still keep in contact with the Command Center.

The PHR is light and easy to carry from one location to another. The handset is made from high impact plastic. The PHR is small enough to be put in a coat pocket when on the go. Simply grab a phone from the handset cabinet (SSU00566/567 sold separately) and you are ready to plug into the building's Audio Evacuation System.

### Standard Features:

- High impact red plastic handset
- 12" Red coil cord expands to 6'
- 1/4" (6.3mm) Male plug; Color: Red
- Tip and Ring connection with no built-in filtering



## Ordering Information:

| Part #   | Description             |
|----------|-------------------------|
| SSU00551 | Red Firefighter Handset |



### Integration Accessories

Space Age Electronics,  
Inc.  
[www.1sae.com](http://www.1sae.com)  
**800.486.1723** voice  
508.485.0966 direct  
508.485.4740 fax





**NO  
EXCUSES!**

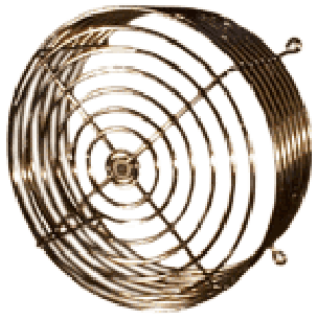


Smoke Detector  
Guard



Heat Detector  
Guard

Smoke Detector  
Guard



## SAE Device Guards

Our Device Guards are designed to protect audio visuals, heat detectors, smoke detectors and a variety of other devices. Manufactured of welded steel wire construction, these durable designs are engineered to protect the vital components of building systems without interfering with the device's operation.

The SDG's universal design provides maximum strength, air flow and visibility. Select from our variety of device guards and add a custom finish to compliment interiors, and to avoid vandalism, add optional custom tamper resistant hardware. Custom hardware and finishes sold separately.

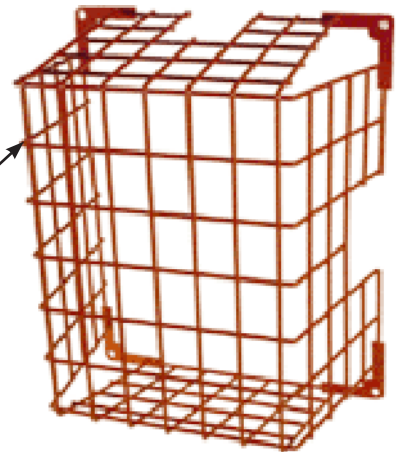
## Standard Features:

- Heavy gauge welded steel wire construction
- Durable finishes
- Installation hardware included

## Options:

- Tamper resistant hardware
- Custom finish

Welded Steel Wire



Rectangular Signal  
Guard



**ISO 9001  
REGISTERED  
COMPANY**



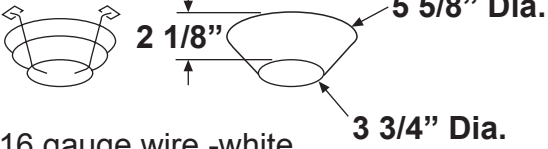
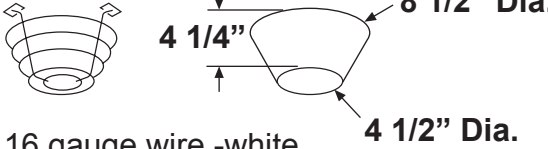
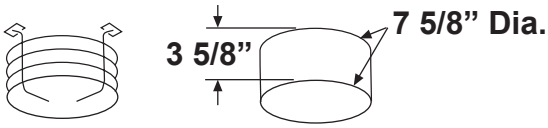
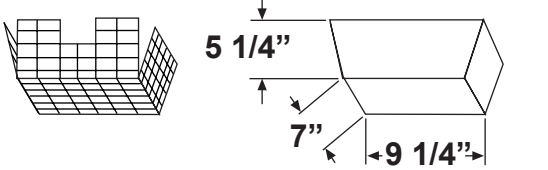
**ACEBOX**

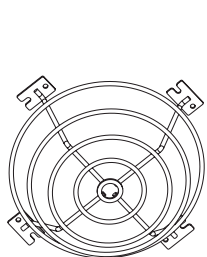
Space Age Electronics, Inc.  
www.1sae.com  
**800.486.1723** Toll Free  
508.485.0966 Local  
508.485.4740 Fax

## Specifications:

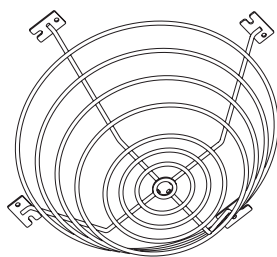
The SDG, SAE Device Guards, are constructed of heavy gauge welded steel wire and come standard in a white, red or chrome finish. Optional custom finishes and tamper resistant hardware are available upon request. Mounting hardware included.

## Usable Interior Space

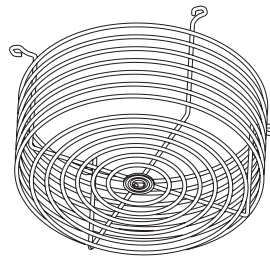
|  |  |
|--|--|
| <p>Heat Detector Guard - SSU03501</p>  <p>16 gauge wire -white</p>    | <p>Smoke Detector Guard - SSU03500</p>  <p>16 gauge wire -white</p>    |
| <p>Smoke Detector Guard - SSU03515</p>  <p>11 gauge wire -chrome</p> | <p>Rectangular Signal Guard - SSU03505</p>  <p>16 gauge wire -red</p> |



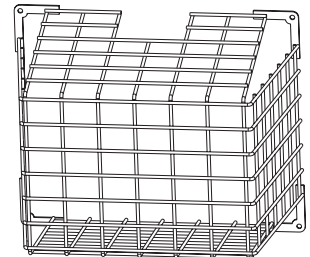
Heat Detector Guard  
**SSU03501**  
White



Smoke Detector Guard  
**SSU03500**  
White



Smoke Detector Guard  
**SSU03515**  
Chrome



Rectangular Signal Guard  
**SSU03505**  
Red

## Ordering Information:

Part #

Description

|          |  |
|----------|--|
| SSU03501 | Small Round Heat Detector Guard, White   |
| SSU03500 | Large Round Smoke Detector Guard, White  |
| SSU03515 | Large Round Smoke Detector Guard, Chrome |
| SSU03505 | Rectangular Signal Guard, Red            |

**ACEBOX**

Space Age Electronics, Inc.  
www.1sae.com  
**800.486.1723** Toll Free  
508.485.0966 Local  
508.485.4740 Fax

*No Excuses, Just Solutions!*

This document is subject to change without notice, see doc # ED0479 for legal disclaimer

ED0057

LT10109

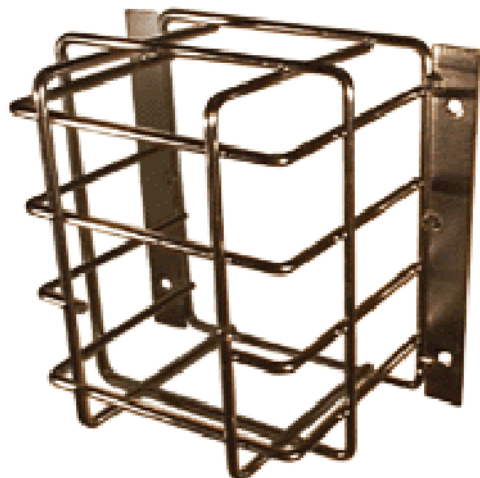
Rev.D

2/2

**NO  
EXCUSES!**



# H/PSG



## Horn Strobe/Pull Station Guard

The HSG Horn Strobe Guard is specifically designed to mount over audible, visual or combination appliances (i.e. horn/strobe), while the PSG Pull Station Guard is specifically designed to mount over fire alarm pull stations. Both wire guards are designed to assist in preventing false events (Alarms and/or Troubles) caused by inadvertent blows to the device.

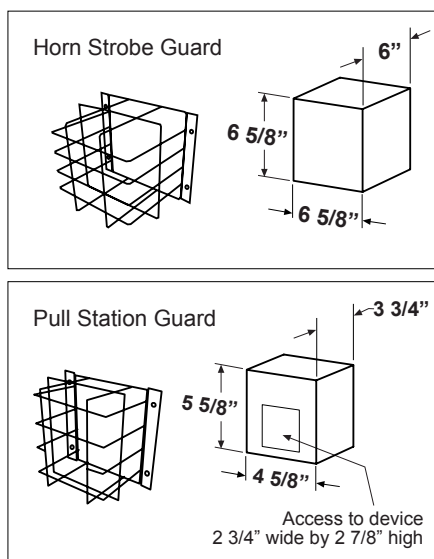
In addition, these guards deter vandalism in exposed areas such as prisons, housing projects, universities, hotels and other public locations.

The HSG's design provides maximum strength, air flow and visibility and mounts easily for new installation or retrofit. The PSG is constructed of heavy gauge tempered steel rod and designed for utilization of the device without operational interference. Both are constructed of heavy gauge tempered steel rod and designed to minimize interference with the operation of the device.

## Standard Features:

- Heavy 7 gauge welded steel wire cage construction
- High aesthetic nickel chrome finish
- Hardware included

Useable Interior  
Space



Made In  U.S.A.

ISO 9001  
REGISTERED  
COMPANY



**ACEBOX**

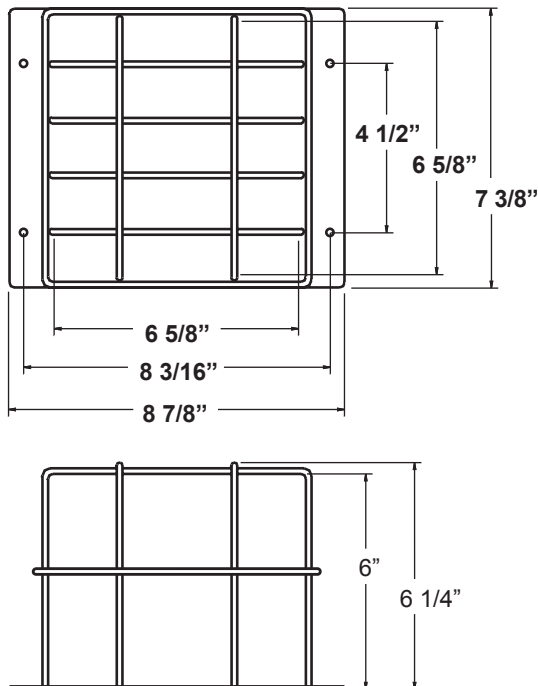
Space Age Electronics, Inc.  
www.1sae.com  
**800.486.1723** Toll Free  
508.485.0966 Local  
508.485.4740 Fax

## Specifications:

The Space Age Electronics, Inc. Horn Strobe Guard (HSG) and Pull Station Guard (PSG) shall be manufactured of hardened steel rod measuring 7 gauge. All joints shall be welded for superior durability. These guards shall be designed to not interfere with the proper operation of the devices nor shall they sufficiently block the device as to render it's purpose unrecognizable. These Guards shall be nickel chrome finished.

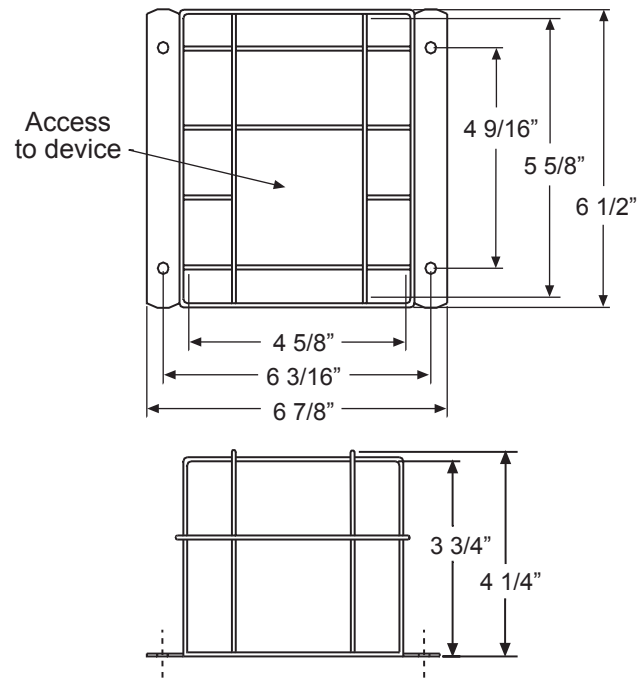
### HSG

#### Dimensions:



### PSG

#### Dimensions:



## Ordering Information:

| Part #   | Description            |
|----------|------------------------|
| SSU03503 | HSG Horn Strobe Guard  |
| SSU03502 | PSG Pull Station Guard |

**ACEBOX**

Space Age Electronics, Inc.  
 www.1sae.com  
 800.486.1723 Toll Free  
 508.485.0966 Local  
 508.485.4740 Fax

*No Excuses, Just Solutions!*

This document is subject to change without notice, see doc # ED0479 for legal disclaimer

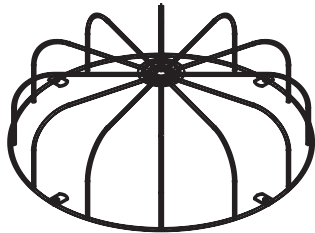
ED0082

LT10172

Rev.F

2/2

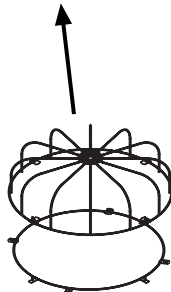
**NO  
EXCUSES!**



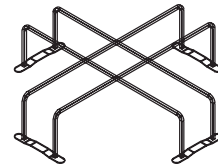
20" Dia. x 5 5/8" Deep  
Round Wire Clock Guard



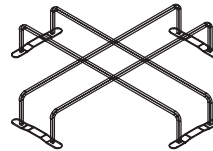
17" Dia. x 5 5/8" Deep  
Round Wire Clock Guard



Two Piece  
Design for  
easy access



19 1/4" Dia. x 5 1/2" Deep  
4 Bar Clock Guard



19 1/4" Dia. x 3 1/2" Deep  
4 Bar Clock Guard

## Standard Features:

### Round Wire Clock Guard:

- Heavy gauge 1/4" steel wire construction
- Two piece design for easy access to devices
- Mounting ring attaches securely to the wall or ceiling
- 4 Wing nuts hold the guard to the mounting ring
- Finish: Chrome nickel plate
- Universal design to meet most applications

## Standard Features:

### 4 Bar Clock Guard:

- Single piece heavy 1/4" welded bar construction
- Provides maximum strength and visibility
- Mounts securely to the wall or ceiling
- Finish: Chrome nickel plate
- Universal design to meet most applications
- All intersections welded for a solid durable design



**ACEBOX**

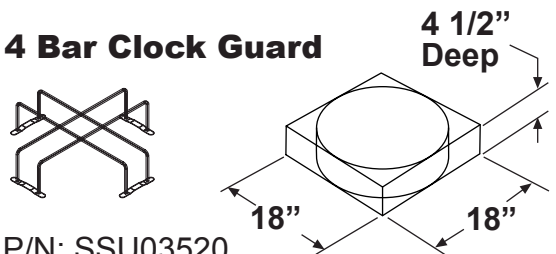
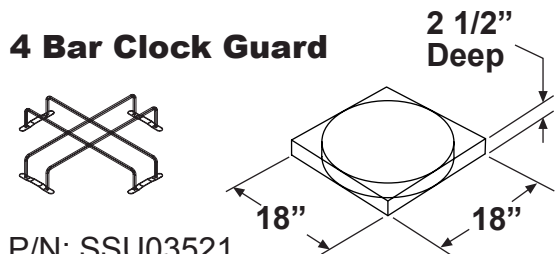
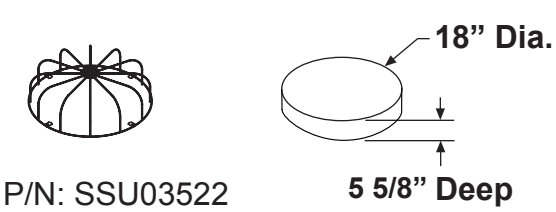
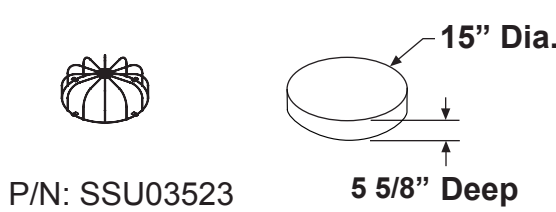
Space Age Electronics, Inc.  
www.1sae.com  
**800.486.1723** Toll Free  
508.485.0966 Local  
508.485.4740 Fax

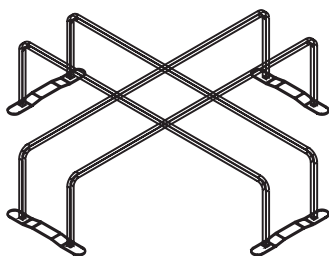


## Specifications:

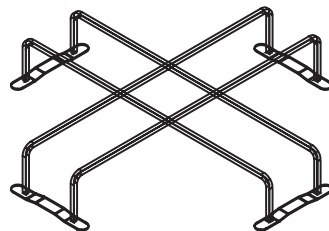
The TDG Time Device Guards are constructed of heavy 1/4" welded steel wire with a chrome nickel plate finish. All intersections welded for a solid durable design. Mounting hardware included.

## Usable Interior Space

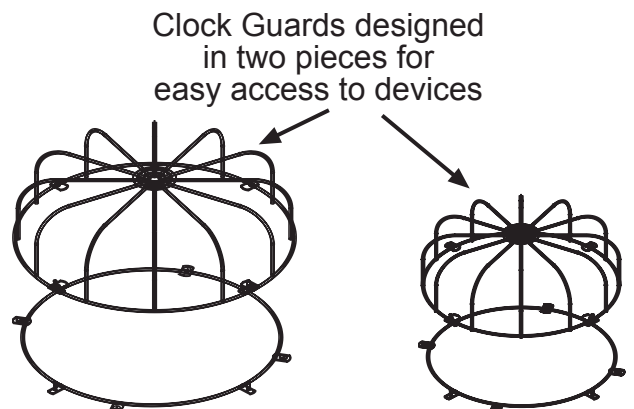
|   |  |
|---|--|
| <p><b>4 Bar Clock Guard</b></p>  <p>4 1/2" Deep</p> <p>18" 18"</p> <p>P/N: SSU03520</p>        | <p><b>4 Bar Clock Guard</b></p>  <p>2 1/2" Deep</p> <p>18" 18"</p> <p>P/N: SSU03521</p>        |
| <p><b>Round Wire Clock Guard</b></p>  <p>18" Dia.</p> <p>5 5/8" Deep</p> <p>P/N: SSU03522</p> | <p><b>Round Wire Clock Guard</b></p>  <p>15" Dia.</p> <p>5 5/8" Deep</p> <p>P/N: SSU03523</p> |



19 1/4" Dia. x 5 1/2" Deep  
4 Bar Clock Guard  
SAE P/N: SSU03520



19 1/4" Dia. x 3 1/2" Deep  
4 Bar Clock Guard  
SAE P/N: SSU03521



20" Dia. x 5 5/8" Deep  
Round Wire Clock Guard  
SAE P/N: SSU03522

17" Dia. x 5 5/8" Deep  
Round Wire Clock Guard  
SAE P/N: SSU03523

## Ordering Information:

Part #

Description

SSU03520

19 1/4" x 5 1/2" 4 Bar Clock Guard

SSU03521

19 1/4" x 3 1/2" 4 Bar Clock Guard

SSU03522

20" x 5 5/8" Round Wire Clock Guard

SSU03523

17" x 5 5/8" Round Wire Clock Guard

**ACEBOX**

Space Age Electronics, Inc.

www.1sae.com

800.486.1723 Toll Free

508.485.0966 Local

508.485.4740 Fax

*No Excuses, Just Solutions!*

This document is subject to change without notice, see doc # ED0479 for legal disclaimer

ED0147

LT10210

Rev.B

2/2

**NO  
EXCUSES!**

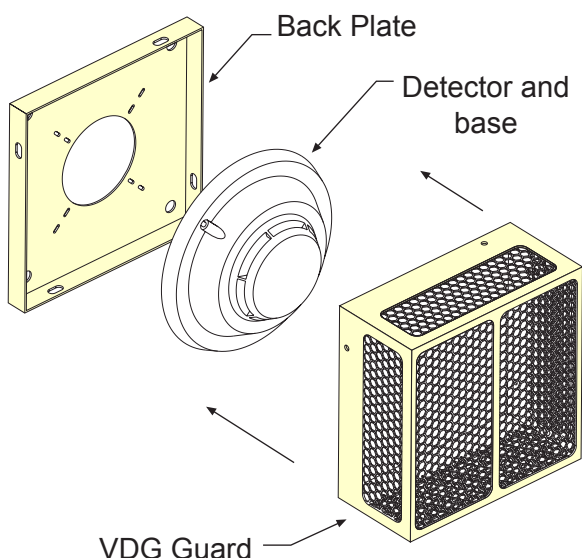


## Vandalism Detector Guard

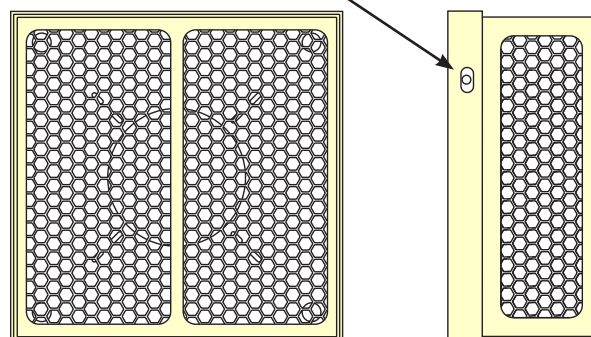
The VDG Vandalism Detector Guard is designed to protect smoke detectors from unauthorized tampering or vandalism. The VDG guard has been designed with airflow and UL smoke test criteria (smoldering fire).

The VDG guard allows particles to enter the smoke chamber of the detector device under normal conditions. This will ensure proper early notification of an alarm without changing the factory setting of the smoke detector device sensitivity. The rugged design provides protection to your system from tampering or vandalism in schools dormitories, prisons and public areas while maintaining a low profile and aesthetically pleasing appearance for a guard.

The VDG package includes the guard housing and all required hardware. The back box, smoke detector and detector base are ordered separately.



Tamper Proof Hardware

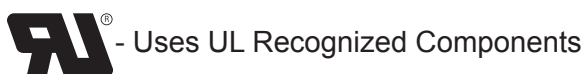


## Standard Features:

- Rugged 14 gauge steel construction
- Tamper-proof hardware and key
- Anchor and mounting hardware
- Epoxy baked-on finish - beige
- Custom finishes available
- Patent pending design
- Overall dimensions:  
6 5/8" square by 3" deep



**ISO 9001  
REGISTERED  
COMPANY**



**ACEBOX**

Space Age Electronics, Inc.  
[www.1sae.com](http://www.1sae.com)  
**800.486.1723** Toll Free  
508.485.0966 Local  
508.485.4740 Fax

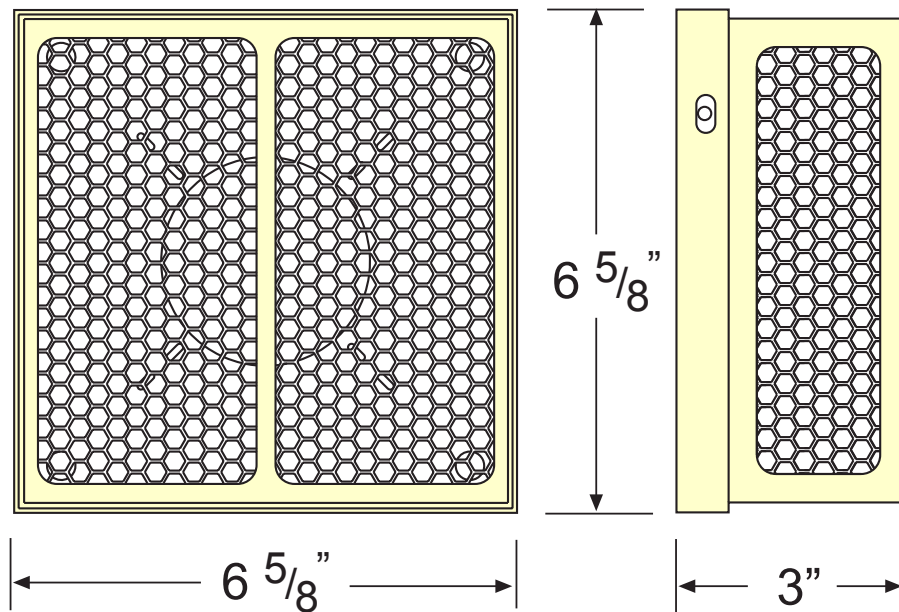
## Specifications:

The smoke detectors on the system shall be protected with a guard that is UL listed with the smoke detector device. The guard is manufactured from 14 gauge sheet metal with a 22 gauge .250 hex hole on staggered centers and is welded into the guard in 6 open areas to optimize and allow for smoke and particle entry to the device chamber. The guard is finished all over with a baked-on powder coat finish. The guard shall be supplied with stainless steel tamper-proof hardware and key. The unit measures overall 6 5/8" square and 3" deep. The guard shall be Space Age Electronics, Inc. VDG series Vandalism Detector Guard.

## Warning:

Installation and wiring should be performed by qualified personnel only. Equipment damage and/or malfunction may result from improper installation. Remove all power from the system until the installation is complete and ready for testing. All work of any kind shall be performed to meet the requirements of any and all local, state and federal codes and/or standards set by the authority having jurisdiction.

## Dimensions:



Space Age Electronics, Inc.  
www.1sae.com  
800.486.1723 Toll Free  
508.485.0966 Local  
508.485.4740 Fax

*No Excuses, Just Solutions!*

## Ordering Information:

| Part #   | Description                  |
|----------|------------------------------|
| SSU03508 | VDG Vandalism Detector Guard |

This document is subject to change without notice, see doc # ED0479 for legal disclaimer

**NO  
EXCUSES!**



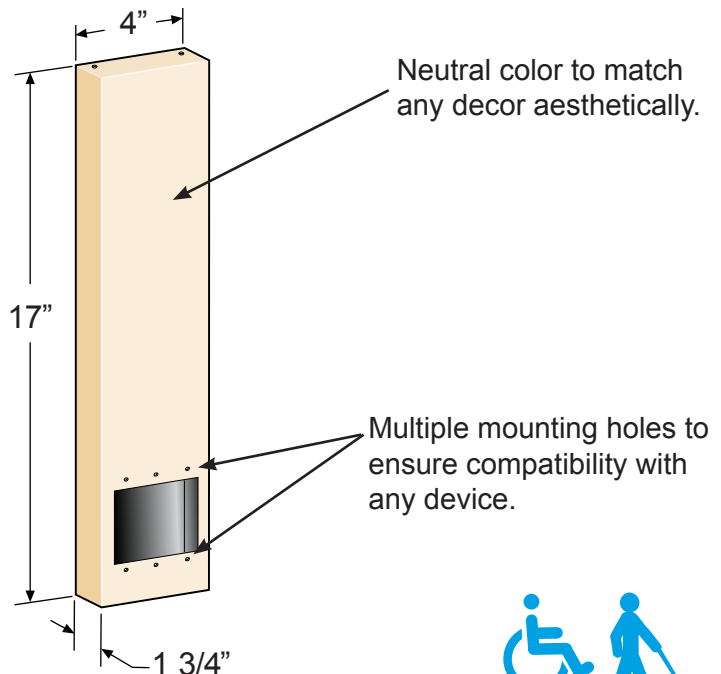
## Device/Appliance Relocator

The DAR is designed to lower the height of an existing fire alarm pull station device or notification appliances to meet ADA (Americans with Disabilities Act) requirements.

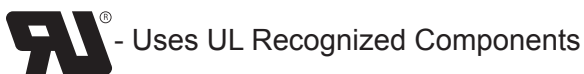
The DAR is designed to assist in meeting ADA requirements and is the easiest and most economical way to do so. The device is lowered without the need to modify existing finished walls, move the existing device's back box, or the need to pull new wires. To install, simply remove the existing device from its back box, attach the Device or Appliance Relocator back plate to the existing back box, connect wires and assemble cover. The DAR supplies a professional and quality installation.

### Standard Features:

- Dimensions:  
4" wide x 17" high x 1 3/4" deep
- Moves appliance or device approximately 12"
- 16 gauge cold rolled steel construction
- Durable matte powder coat beige finish
- Raised clamp high barrier terminal strip
- 18 gauge stranded extension wires
- Wall mounting holes and hardware supplied
- Custom colors are available, contact SAE for more details



**ISO 9001  
REGISTERED  
COMPANY**



**ACEBOX**

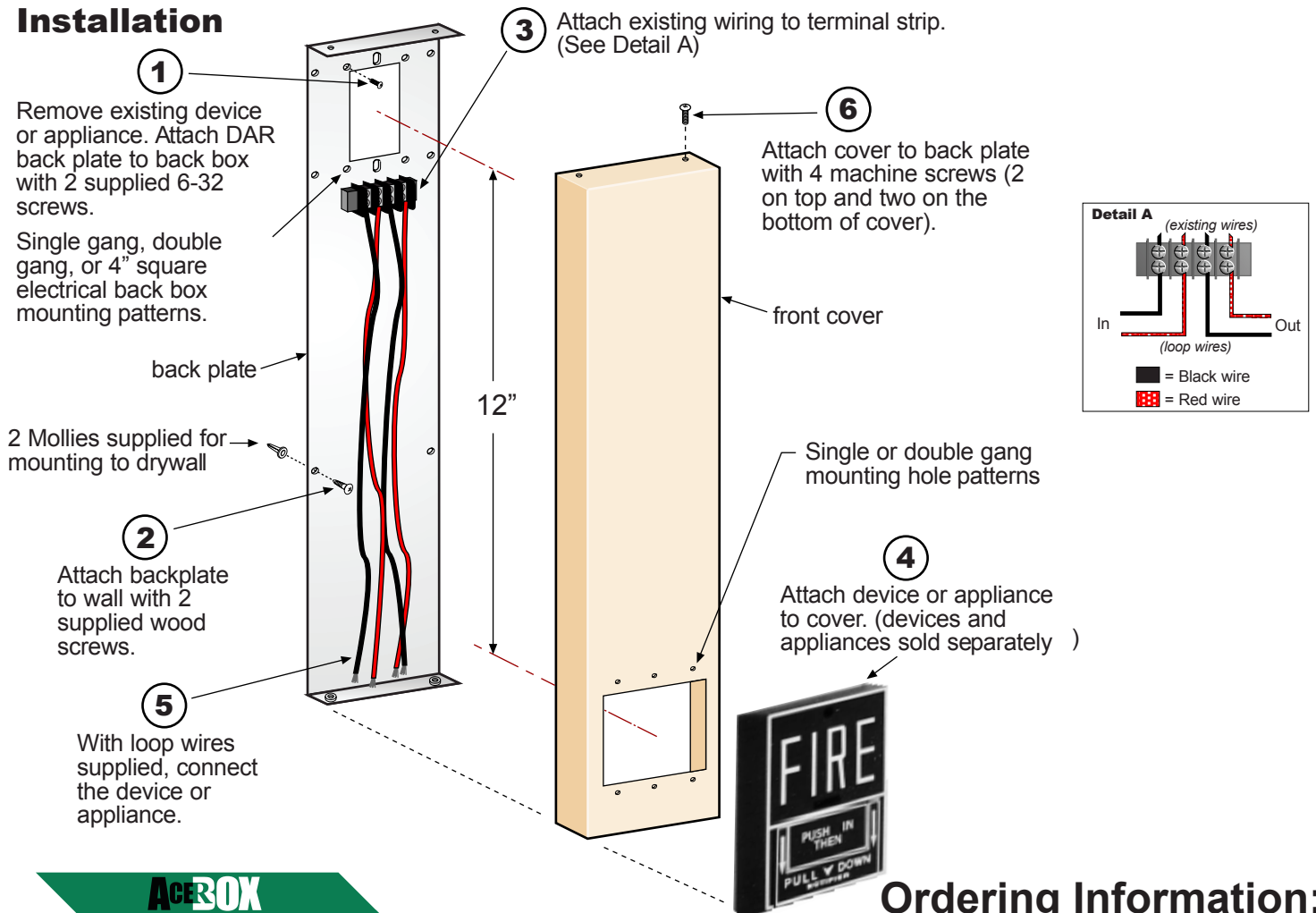
Space Age Electronics, Inc.  
www.1sae.com  
**800.486.1723** Toll Free  
508.485.0966 Local  
508.485.4740 Fax

## Specifications:

The DAR Device or Appliance Relocator is designed to lower the height of a fire alarm pull station device or notification appliance to meet ADA requirements. ADA requires a pull station to be mounted a maximum of 54" high for wheelchair side access and 48" maximum for front access. Notification appliances need to be located 80" off finished floor or 6" below finished ceiling, whichever is lower. The DAR relocates the device or appliance approximately 12" from the original location. Also, the DAR lowers the height without the need to pull new wires or relocate the back box which may cause damage to finished walls.

The DAR is manufactured from 16 gauge cold rolled steel with a durable powder coat baked on matte beige finish (custom finishes available). The front cover is attached with machine screws and is easily removed to access wiring. The DAR attaches to most single gang, double gang or 4" square electrical back boxes and is supplied with appropriate holes for mounting to a wall (hardware included). Easy connections to a raised clamp high barrier terminal strip for field connections. Supplied with 18 gauge stranded wires to connect the notification appliance or initiation device to the original system. The terminal strip is rated for 20 amp max 250V (Class B/UL) 300V (CSA), while the points are rated for 12 gauge wire. Overall dimensions measure 4" wide x 17" high x 1 3/4" deep. The DAR complies with ADA standards.

## Installation


**ACEBOX**

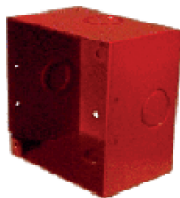
Space Age Electronics, Inc.  
 www.1sae.com  
**800.486.1723** Toll Free  
 508.485.0966 Local  
 508.485.4740 Fax

## Ordering Information:

| Part #   | Description                  |
|----------|------------------------------|
| SSU00595 | DAR Device/Appliance Cabinet |



**NO  
EXCUSES!**



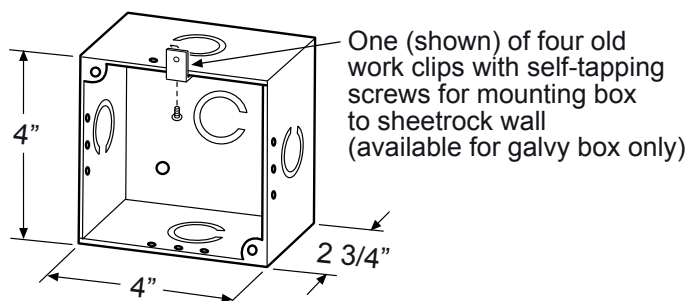
# SAB

## 4" Square Appliance Box

The SAB Square Appliance boxes are top quality durable units, manufactured in a variety of styles to meet your requirements. Each comes complete with pre-punched conduit knockouts and tapped mounting holes and will accommodate all electrical appliances.

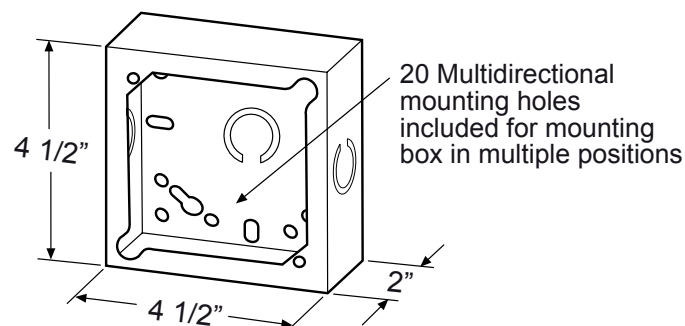
### SAB Extra Deep Electrical Box

The SAB Wall Mount Appliance Box is an economical solution for custom installations. The extra deep design accepts mounting of speakers and horns without costly extension rings.



### SAB Surface RED Electrical Box

The SAB Surface Mount Appliance Box is an alternative to wall mounting installation. The red finish and rugged construction make this the logical choice for the installation of fire alarm devices.



### Standard Features:

- 16 gauge (0.062 thick) galvanized steel construction
- Galvy or Red baked-on epoxy finish
- Dimensions: 4" x 4" x 2 3/4" deep
- Five 1/2" and 3/4" pre-punched conduit knockouts
- Two 8-32 tapped appliance mounting holes
- Accommodates all electrical appliances
- Installation hardware included

### Standard Features:

- Rugged 16 gauge (0.062 thick) cold rolled steel construction
- Dimensions: 4 1/2" x 4 1/2" x 2" deep
- Durable baked-on RED epoxy finish
- Three 1/2" and 3/4" pre-punched conduit knockouts
- Two 8-32 tapped appliance mounting holes
- Accommodates all electrical appliances
- Installation hardware included

### Ordering Information:

Part #

Description



Made In  U.S.A.

|          |   |
|----------|---|
| SSU09030 | Extra Deep (2 3/4") 4 Square Box Galvy    |
| SSU09037 | Extra Deep (2 3/4") 4 Square Box Red      |
| SSU00454 | 4 1/2" Square (2" Deep) Appliance Box Red |

**ISO 9001  
REGISTERED  
COMPANY**

**ACEBOX**

Space Age Electronics, Inc.  
www.1sae.com  
**800.486.1723** Toll Free  
508.485.0966 Local  
508.485.4740 Fax

This document is subject to change without notice, see doc # ED0479 for legal disclaimer

ED0088

LT10258

Rev.B

1/1

*No Excuses, Just Solutions!*



**NO  
EXCUSES!**



## Outdoor Fire Beacon Bracket

The Outdoor Fire Beacon Bracket (OFB) is made of 16 Gauge cold rolled steel, Powder Coat painted Red and marked "FIRE" with 1" tall letters.



The back of the unit has a standard "device mount" and "4" Sq" mounting hole spacing and an oversized wiring pull through hole. The front cover is angled to prevent water intrusion into the unit.

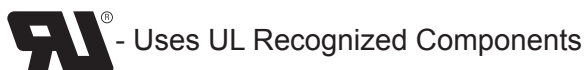
The beacon is mounted to a threaded 1/2 inch diameter pipe nipple on the top of the unit. The cover opens from the front of the unit with 4 screws and has plenty of room to work on the beacon's connections.

This unit is designed to accept any Beacon that mounts to a 1/2" nipple. The diameter of the beacon can not exceed 6".

## Standard Features:

- Convenient two piece construction
- Red, color
- "FIRE" on each side for immediate identification
- 16 Gauge CRS construction made in the USA
- Oversized design for ample wiring space
- Standard 1/2 inch Threaded Mounting Pipe
- Two position terminal block standard
- Eliminates water intrusion issues

Two suggested sources for Fire rated beacons are Tomar (model 500P) and Cooper-Wheelock (model MAX). Both have 1/2 inch threaded bases and come in a variety of colors and voltages.



**ISO 9001  
REGISTERED  
COMPANY**

**ACEBOX**

Space Age Electronics, inc.  
www.1SAE.com  
**800.486.1723** Toll Free  
508.485.0966 Local  
508.485.4740 Fax

## Specifications:

The Space Age Electronics' OFB is a 5 " High x 4.4" Wide x 4.7" Deep, 2 piece assembly that allows for the proper installation of an outdoor Fire Beacon such as a Tomar model 500p-1228, CooperWheelock MAX, or other such device that maintains a 1/2 inch threaded "nipple" mounting footprint. The unit is weather proof and corrosion resistant.

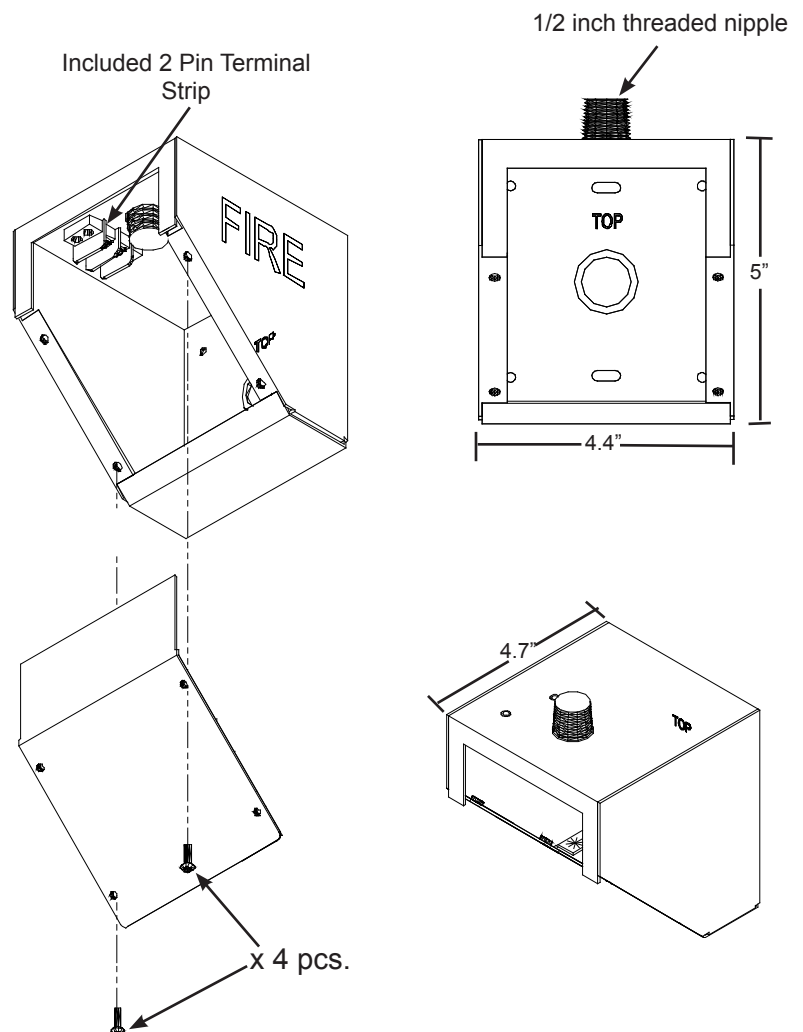
The OFB has a .875" hole to route wiring through and two double mounting holes (Single Gang and 4"Square) used to secure the back of the box to the wall.

The back box comes in Red and is supplied with a clinch type terminal strip and with 4 6x32 screws for securing the front cover to the back of the unit (4 threaded holes).

The OFB is made of 16 gauge CRS and Powder Coat Painted for durability at Space Age Electronics, Inc.

## Installation:

- Rotate the unit so that the threaded nipple points straight up, the word Fire is legible and the word TOP on the back of the unit is above the wire pull thru hole.
- Attach the back of the unit to the wall either directly or to an existing surface or flush mount single gang device mount box or a 4 " square back box.
- Pull wire through oversized wire entry hole.
- Mount the Fire beacon (Tomar 500p-1228, Cooper-Wheelock MAX or equivalent) by inserting the wire "pigtails" into the threaded nipple on the top of the unit and then screw and tighten the beacon itself on the threaded nipple.
- Connect wiring inside the unit using the supplied terminal strip. Place the cover on the front of the unit and secure with 4 supplied screws
- Test per applicable codes



**ACEBOX**

Space Age Electronics, inc.  
www.ISAE.com  
**800.486.1723** Toll Free  
508.485.0966 Local  
508.485.4740 Fax

## Ordering Information:

| Part #   | Description        |
|----------|--------------------|
| SSU00600 | OFB Beacon Bracket |