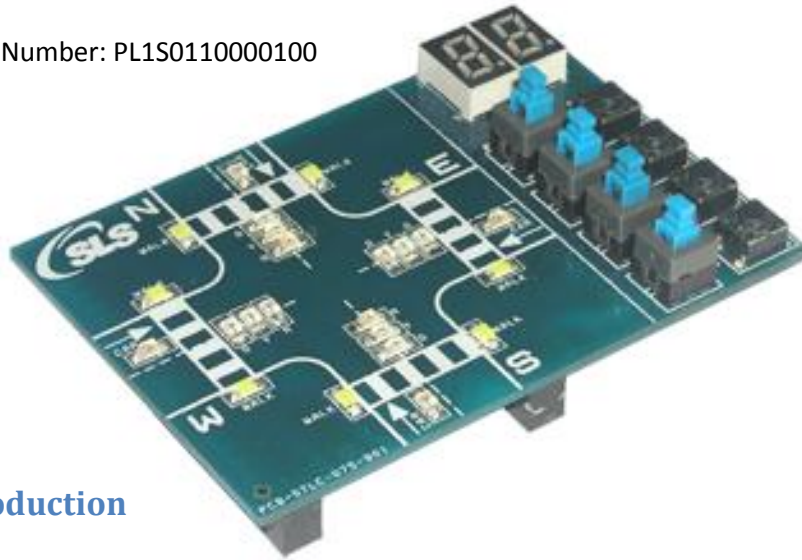


Traffic Light Controller

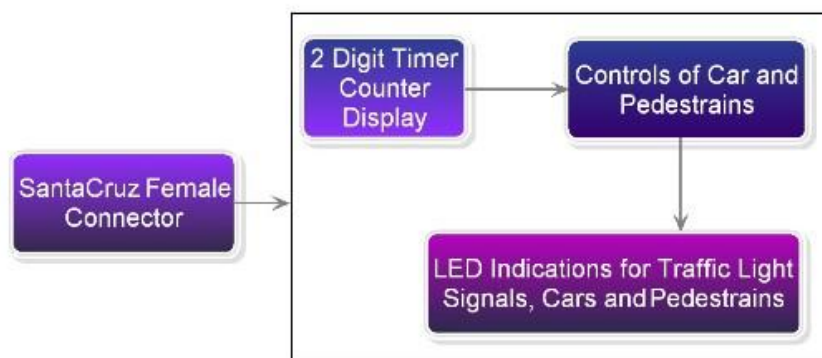
Order Number: PL1S0110000100



Introduction

The SLS Traffic Light Controller (TLC) is an extremely useful tool for teaching HDL coding for State Machines. Moreover, one can also write different kinds of LED blinking programs and sharpen the HDL skills.

The SLS TLC Snap-On board is designed to snap on Altera Standard santacruz header. If you have a DE1 or a DE2 board you can use **E-Gasket**, a santacruz to DE1/2 header convertor.



Features

- Four Car indicator LEDs
- Red, Yellow and Green light indicator LEDs for controlling traffic in four directions
- Eight LEDs to indicate Walk/Don't Walk controllable in pairs
- Four Car control switches
- Four Pedestrian control push button switches
- Two seven segment displays for 2 digit timer/counter
- Santa Cruz Expansion connectors (J1, J2, J3)

Kit contents

- Traffic Light Controller Board
- CD Contents
 - Reference designs for UP3, DE1 and DE2 Board
 - Tutorials
 - Board Reference Manual
 - Board Demonstration