

# HEAVY DUTY BASE FOR POST AND CHAIN

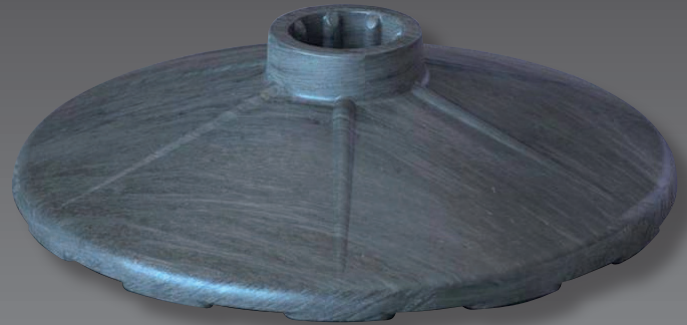
HEAVY DUTY BASE FOR INCREASED STABILITY

TECHNICAL SPECIFICATION

TRAFFIC MANAGEMENT

## INSTRUCTIONS FOR USE

Designed to fit the JSP Ltd. posts and chains



## BASE MATERIALS

Post Base: Recycled PVC

## BASE DIMENSIONS

Diameter of Base: 34.5cm

Height of Base: 8.4cm

Weight of Base: 3Kg (Approx)

## CLEANING & MAINTENANCE

Clean with warm soapy water

Do not use abrasive substances or solutions

## LIMITATIONS OF USE

Chain Support Posts and Chain are not intended for use on the highway and do not meet the requirements of "The Traffic Signs Regulations and General Directions 2002" and "Safety at Street Works and Road Works", both published by HMSO

Chain Support Base is to be used with the Chain Support upright