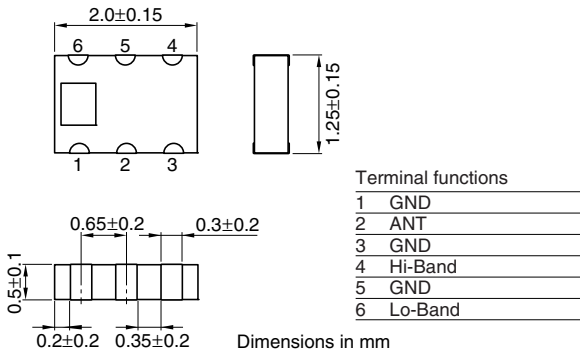


# Multilayer Chip Diplexers For 2.4/5GHz W-LAN

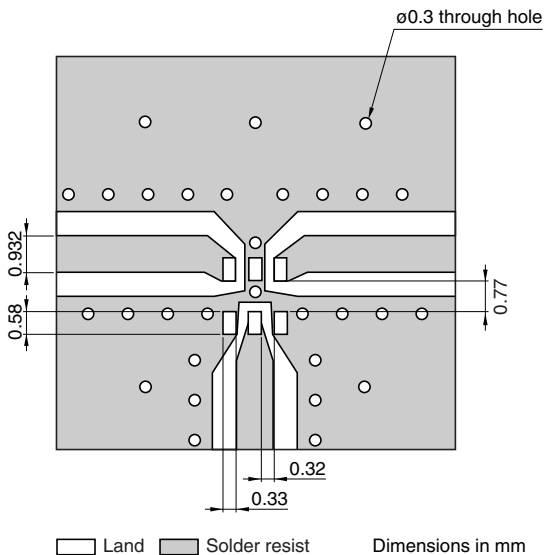
Conformity to RoHS Directive

DPX Series DPX205950DT-9026A1

## SHAPES AND DIMENSIONS



## RECOMMENDED PC BOARD PATTERNS



## ELECTRICAL CHARACTERISTICS

Item	Port	Frequency range	Minimum value	Typical value	Maximum value
Insertion loss	Lo-band	[2400 to 2500MHz]	(dB) —	0.39	0.50
	Hi-band	[4900 to 5950MHz]	(dB) —	0.39	0.65
Return loss	ANT	[2400 to 2500MHz]	(dB) 10	16.5	—
		[4900 to 5950MHz]	(dB) 10	17.2	—
	Lo	[2400 to 2500MHz]	(dB) 10	15.5	—
		Hi	[4900 to 5950MHz]	(dB) 10	17.0
Attenuation	Lo-band	[4800 to 5000MHz]	(dB) 20	34.7	—
		[7200 to 7500MHz]	(dB) 20	25.2	—
	Hi-band	[824 to 915MHz]	(dB) 20	26.9	—
		[1800 to 2500MHz]	(dB) 20	26.2	—
Isolation		[9800 to 11900MHz]	(dB) 15	20.6	—
		[DC to 2500MHz]	(dB) 20	25.6	—
		[4900 to 5950MHz]	(dB) 20	25.0	—
Temperature range	Operating	(°C)	−40	—	+85
	Storage	(°C)	−40	—	+85

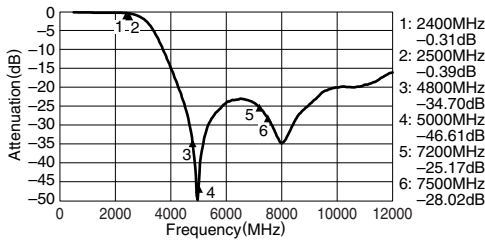
• Ta: +25°C

• Conformity to RoHS Directive: This means that, in conformity with EU Directive 2002/95/EC, lead, cadmium, mercury, hexavalent chromium, and specific bromine-based flame retardants, PBB and PBDE, have not been used, except for exempted applications.

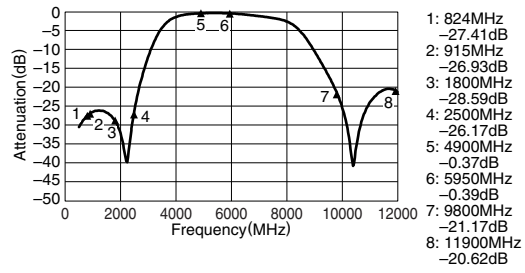
• All specifications are subject to change without notice.

### FREQUENCY CHARACTERISTICS

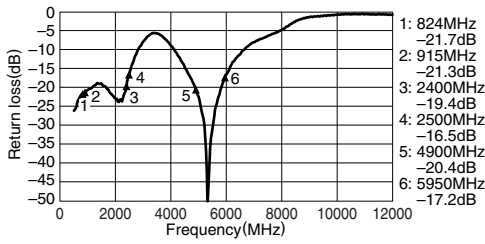
#### Lo-BAND PORT S21



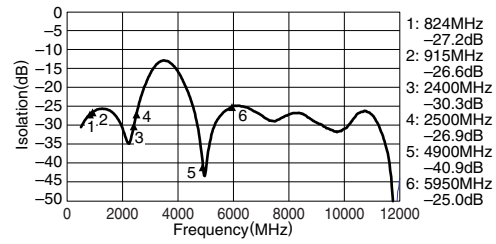
#### Hi-BAND PORT S31



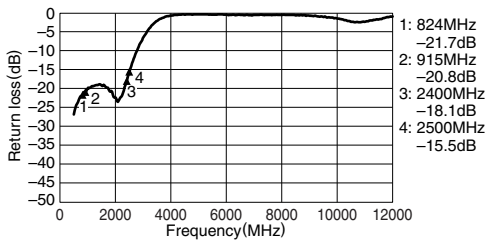
#### COMMON PORT RETURN LOSS S11



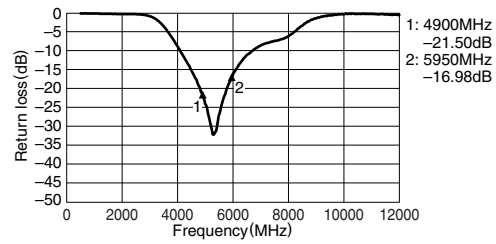
#### ISOLATION S23



#### Lo-BAND PORT RETURN LOSS S22



#### Hi-PORT RETURN LOSS S33



• All specifications are subject to change without notice.