

VT04 and VT02 Visual IR Thermometers

Technical Data

Detect issues instantly!

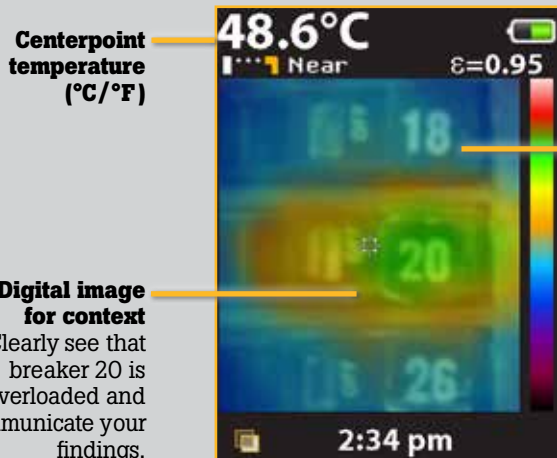
Fluke Visual IR Thermometers combine the convenience of a spot thermometer with the visual advantage of an infrared camera creating a brand new tool category.

- Detect issues instantly with built-in digital camera
- No training required
- True pocket size design
- Breakthrough affordability



Designed to see it all

Every Fluke Visual IR Thermometer has a built-in digital camera with a thermal heat map overlay to instantly identify the exact location of the problem.

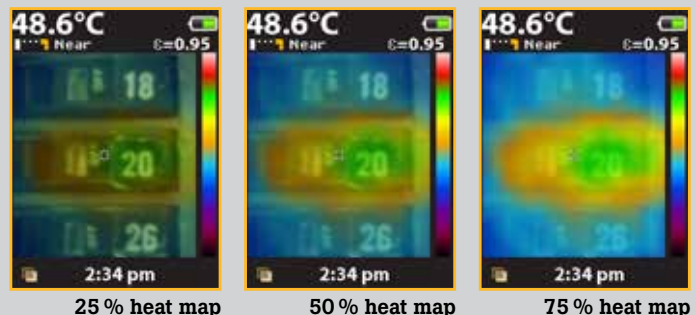


Centerpoint temperature (°C/°F)

Digital image for context

Clearly see that breaker 20 is overloaded and communicate your findings.

Thermal heat map overlay



25 % heat map

50 % heat map

75 % heat map

See the difference

See how a traditional IR thermometer and an entry level infrared camera make it challenging to communicate the issue on breaker 20.



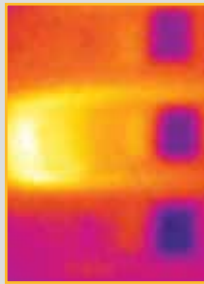
Visual inspection

No issues are obvious to the naked eye.



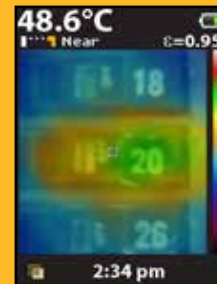
Traditional IR thermometer

Optimized for single point measurements.



Entry level infrared camera

Challenging to see the exact location.



Visual IR Thermometer

Digital image with heat map overlay detects the exact location of the issue.

Key features of a Visual IR Thermometer

Breakthrough affordability

Half the cost of infrared cameras that require training and software

Built-in digital camera

Every Fluke Visual IR thermometer has a built-in digital camera

Exclusive thermal heat map blending overlay

Blend digital and thermal images to instantly show the exact location of the issue. Blend between 0 %, 25 %, 50 %, 75 %, and full thermal with one button

No training required

Fully automatic with built-in intelligence

True pocket size design

Forty percent smaller than entry-level infrared cameras

SmartView® reporting software

Store up to 10,000 images per Gb on included SD card and make professional reports on included professional software

Hot and cold spot trackers

Automatically identifies hottest and coldest spots within field of view

The Fluke VT04 adds powerful features that include:

Powerful resolution with PyroBlend™ Plus optics

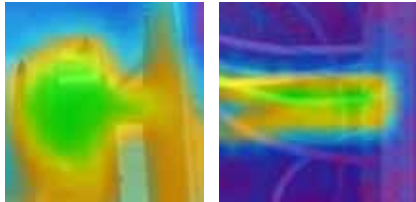
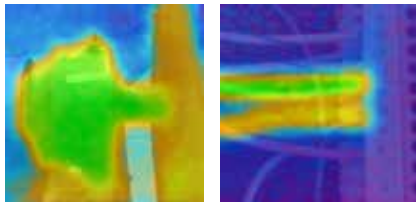
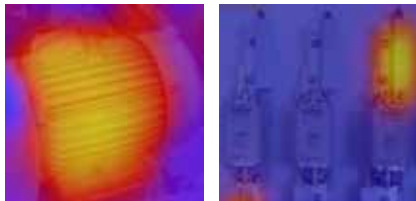
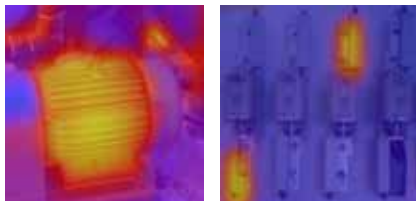
- Best-in-class field of view for tight spaces: 28° x 28°
- Four times sharper images: VT04 compared to VT02

Alarm and time lapse features

- **Hi/Lo temperature alarm**—Screen flashes if user-selected temperature is exceeded
- **Time lapse image capture**—automatically capture images
- **Auto-monitor™ alarm**—automatically capture images after a user-selected temperature alarm has been triggered

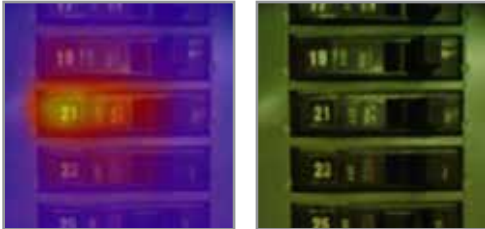


Specifications

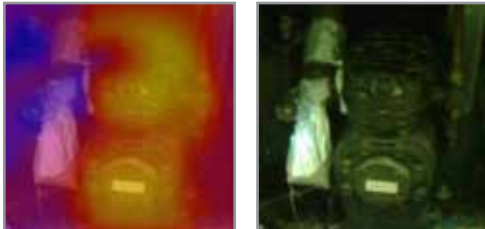
Key features	VT02	VT04
Built-in digital camera	Yes	
Thermal heat map overlay	Yes, five blending modes	
Image optics system	PyroBlend™ optic 	PyroBlend™ Plus optic *4x sharper image than VT02 
Field of view	20° x 20° 	28° x 28° 
Hi-Lo temperature alarms	—	Yes
Time lapse image capture	—	Yes
Auto-monitor alarm	—	Yes
Battery type	Four (4) AA batteries	Li-Ion rechargeable
Training	No training required	
Ergonomics	Slim pocket-sized design	
Hot and cold markers	Yes	
General features		
Battery life	Eight (8) hours	
Temperature measurement range	-10 °C to +250 °C (14 °F to 482 °F)	
Temperature measurement accuracy	+/- 2 °C or +/- 2 %	
Temperature measurement	Yes, centerpoint	
Storage medium (micro SD card)	Stores up to 10,000 images per Gb (Four (4) Gb card included)	
Infrared spectral band	6.5 µm to 14 µm	
Level and span	Auto	
Focus mechanism	Focus free, no training required with built-in intelligence	
Focus options—exclusive user selectable NEAR/FAR options	NEAR > 23 cm (9 in); FAR < 23 cm (9 in)	
Dimensions	21 cm x 7.5 cm x 5.5 (8.3 in x 3 in x 2.2 in); < 300 g. (10.5 oz.)	
File format	.is2 format saved to SD card. User can create professional reports or export images in Smartview (BMP, DIB, GIF, SPE, FIF, SPEG, JPG, PNG, TIF and TIFF)	
Safety and compliance	CFR47: 2009 Class A. Part 15 subpart B; CE: EN 61326:2006; IEC/EN 61010-1:2010	
Warranty	Two (2) years	

Key applications

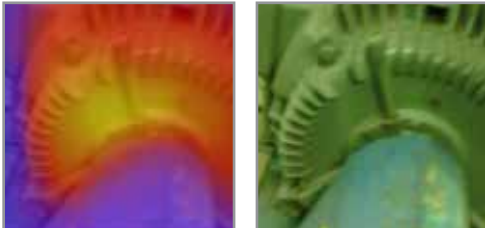
Overloaded breakers



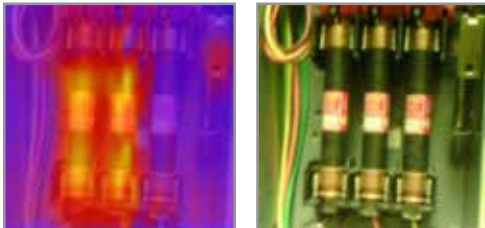
Evaluate compressor heat expansion valves



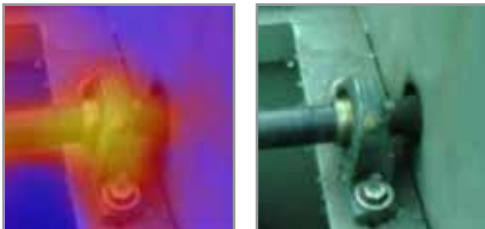
Overheating motor



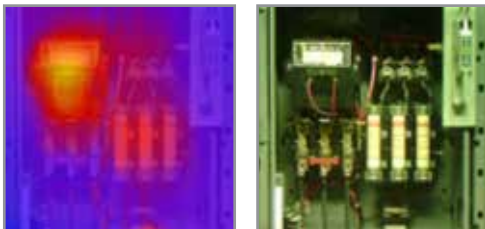
Unbalanced three phase supply



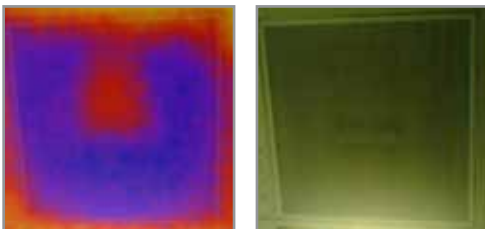
Overheating bearings



Combination starter



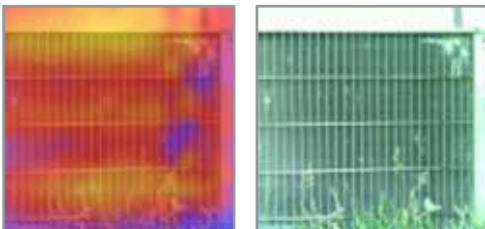
Faulty air damper



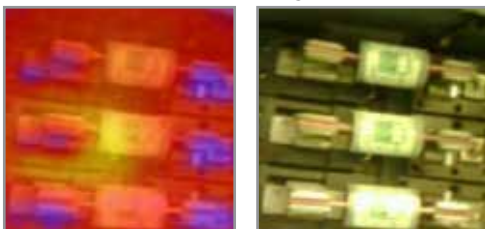
Normal operating temperature on mission critical breaker



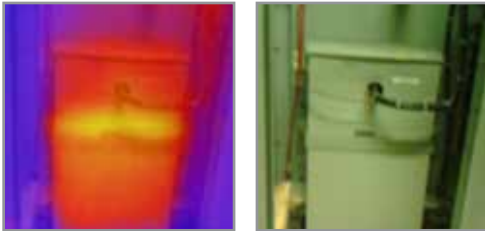
Abnormal heat patterns in an AC condenser



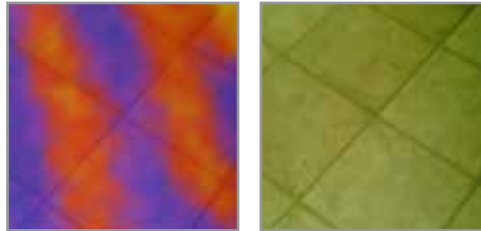
Detect issues with switchgears



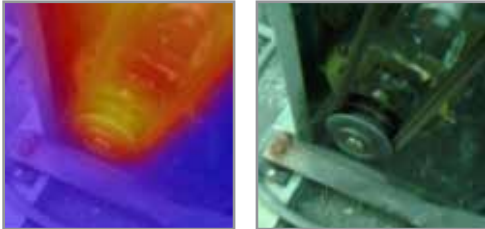
Monitor power factor correction capacitors



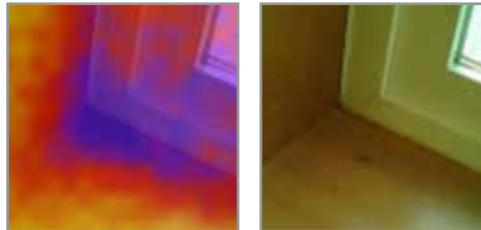
Ensure radiant flooring is functional



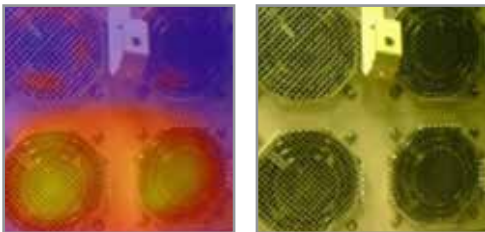
Overheating pulley and belts



Identify potential heat loss from doors and windows



Check fans for high-powered equipment



Your Results Matter™

Ordering information

- FLK-VT04** VT04 Visual IR Thermometer
- FLK-VT02** VT02 Visual IR Thermometer

Included with product

Hard Case, hand strap, mini SD card and adapter, SmartView® software on CD, Lithium Ion batteries and Micro USB Charger/Power Supply (including mains adapters) (VT04) or 4 AA batteries (VT02), printed Quick Start Guide in English, Spanish, German, French and Simplified Chinese Simplified, others on CD. Users' manual on CD (21 languages).

Optional

- FLK-VT04-CHARGER** Extra charger for VT04
- FLK-VT-HOLSTER** Holster for VT02 and VT04
- C90** C90 Soft Case

Save money with Fluke kits:

- FLK-VT04-MAINT-KIT** Includes a VT04 Visual IR Thermometer and a 1507 Insulation Multimeter
- FLK-VT04-HVAC-KIT** Includes a VT04 Visual IR Thermometer, 902 True-RMS HVAC Clamp Meter and a 116 Digital Multimeter.
- FLK-VT04-ELEC-KIT** Includes a VT04 Visual IR Thermometer, a 117 Electricians MultiMeter and a 376 AC/DC True-RMS Clamp Meter

Fluke Corporation
PO Box 9090, Everett, WA 98206 U.S.A.

Fluke Europe B.V.
PO Box 1186, 5602 BD
Eindhoven, The Netherlands

For more information call:
In the U.S.A. (800) 443-5853 or
Fax (425) 446-5116
In Europe/M-East/Africa +31 (0) 40
2675 200 or Fax +31 (0) 40 2675 222
In Canada (800)-36-FLUKE or
Fax (905) 890-6866
From other countries +1 (425) 446-5500 or
Fax +1 (425) 446-5116
Web: www.fluke.com

©2013 Fluke Corporation. Specifications subject to change without notice. Printed in U.S.A.
08/2013 Pub_ID: 12096-eng

Modification of this document is not permitted without written permission from Fluke Corporation.