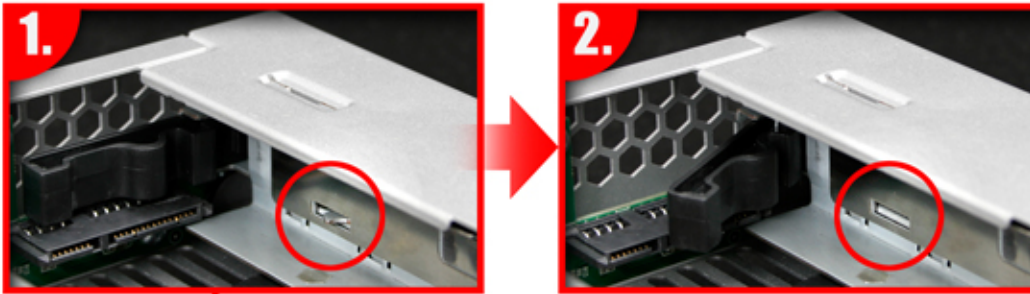


MB971SP-B DuoSwap

5.25" Hot Swap Drive Caddy for 2.5" & 3.5" SATA Hard Drive or SSD

ICY DOCK®
www.icydock.com



Eagle-Hook mechanism design

Switches on immediately the 3.5" drive inserted and locks the 3.5" hard drive in place.



**SATA 6Gbps
SUPPORT**



**LED Indicator
for each HDD slot**
HDD Power - Solid Green
HDD Access - Flash Amber

3.5" SSD/HDD SLOT POWER BUTTON



3.5" SSD/HDD RELEASE BUTTON



2.5" SSD/HDD SLOT POWER BUTTON



2.5" SSD/HDD RELEASE BUTTON



MB971SP-B Feature

- * Connects *up to one 2.5" & 3.5" SATA HDD in one 5.25" bay.*
- * *Supports a single 2.5" HDD/SSD in 12.5mm height.* (Up to 9.5mm while the 3.5" bay is in use)
- * Fast and simple *tool-less drive installation.*
- * *2 part anti-dust cover* protects system internals even when a small 2.5" SATA drive is used.
- * *Anti vibration kit* for the 3.5" drive bay to help reduce movement.
- * *Eagle-Hook mechanism design* added extra security to the 3.5" hard drive.
- * *Individual LED* for both 2.5" & 3.5" bays.
- * *Easy access individual power buttons* allows hard drive life expendability and energy conservation.
- * *Large individual drive eject button* for hassle free drive removal.
- * Perfect for any technical level of computer users.

- * Able to run *2.5" & 3.5" SATA hard drive or SSD Simultaneously.*
- * *Individual SATA 6Gbps connection* for each hard drive or SSD.

Model Number	MB971SP-B
Color	Black
Drive Fit	D2.5" SATA HDD or SSD x 1 3.5" SATA HDD or SSD x 1
Host Connection	7 pin SATA port x 2
Device Space	5.25" half height device bay
Transfer Rate	Up to 6 Gbit/s. (depending on hard drive speed)
Insert& Extract Via	Direct SATA hard drive connection
Power Connector	15pin SATA Power
Drive Cooling	Metal heat dispersion
Power Indicator	Solid Green LED
HDD Access Indicator	Flashing Amber LED
Structure	Metal body w/ partial plastic
Dimension (L x W x H)	147.8 42 178.2mm
Weight	621g