

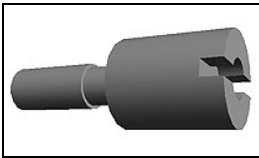


**Have a Question?**  
Chat with a Product Information Specialist

What can we help you find?

- [Products](#)
- [Industries](#)
- [Resources](#)
- [About TE](#)
- [My Account](#)
- [Innovation](#)
- [Support Center](#)

**787004-3 Product Details** [Share](#) [Print](#) [Email](#)



**787004-3**

TE Internal Number: 787004-3  
✔ Active

[View 3D PDF](#)

**0.8 [.031] Accessories**

✔ Always EU RoHS/ELV Compliant (Statement of Compliance)

**Product Highlights:**

- Accessory Type = Screwlock
- Packaging Method = Bulk
- Packaging Quantity = 200
- Region = Americas, Asia/Pacific
- RoHS compliant, ELV compliant

[View all Features](#)

**Quick Links**

- [▶ Pricing & Availability](#)
- [▶ Search for Tooling](#)
- [▶ Product Feature Selector](#)
- [▶ Contact Us About This Product](#)

- [Add to My Part List](#)    [Request Sample](#)    [Find Similar Products](#)  
[Buy Product](#)

Documentation & Additional Information	
<p><b>Product Drawings:</b></p> <ul style="list-style-type: none"> <li>SCREWLOCK, BOARDMOUNT, 0.8mm CHAMP (PDF, English)</li> </ul> <p><b>Catalog Pages/Data Sheets:</b></p> <ul style="list-style-type: none"> <li>None Available</li> </ul> <p><b>Product Specifications:</b></p> <ul style="list-style-type: none"> <li>None Available</li> </ul> <p><b>Application Specifications:</b></p> <ul style="list-style-type: none"> <li>CHAMP 0.8 mm Cable and Printed Circuit (PC) Board Co... (PDF, English)</li> </ul> <p><b>Instruction Sheets:</b></p> <ul style="list-style-type: none"> <li>None Available</li> </ul> <p><b>CAD Files: (CAD Format &amp; Compression Information)</b></p> <ul style="list-style-type: none"> <li>2D Drawing (DXF, Version B)</li> <li>3D Model (IGES, Version B)</li> <li>3D Model (STEP, Version B)</li> </ul>	<p><b>Additional Information:</b></p> <ul style="list-style-type: none"> <li>Product Line Information</li> </ul> <p><b>Related Products:</b></p> <ul style="list-style-type: none"> <li>Tooling</li> </ul>

[List all Documents](#)

Product Features (Please use the Product Drawing for all design activity)	
<p><b>Product Type Features:</b></p> <ul style="list-style-type: none"> <li>Accessory Type = Screwlock</li> </ul> <p><b>Mechanical Attachment:</b></p> <ul style="list-style-type: none"> <li>Board Mount = Yes</li> </ul> <p><b>Body Features:</b></p> <ul style="list-style-type: none"> <li>Body Material = Stainless Steel</li> </ul> <p><b>Industry Standards:</b></p> <ul style="list-style-type: none"> <li>RoHS/ELV Compliance = RoHS compliant, ELV compliant</li> <li>Lead Free Solder Processes = Not relevant for lead free process</li> <li>RoHS/ELV Compliance History = Always was RoHS compliant</li> </ul>	<p><b>Packaging Features:</b></p> <ul style="list-style-type: none"> <li>Packaging Method = Bulk</li> <li>Packaging Quantity = 200</li> </ul> <p><b>Product Availability:</b></p> <ul style="list-style-type: none"> <li>Region = Americas, Asia/Pacific</li> </ul> <p><b>Other:</b></p> <ul style="list-style-type: none"> <li>Brand = AMP</li> </ul>

**Corporate Information**

- [About TE](#)
- [Investors](#)
- [News Room](#)
- [Supplier Portal](#)
- [Careers](#)
- [Terms & Conditions](#)

**Quick Links**

- [Distributor Inventory](#)
- [Product Cross Reference](#)
- [Documents & Drawings](#)
- [Product Compliance Support Center](#)
- [Site Map](#)

**Customer Support**

- [Email or Chat With Us](#)
- [Find a Phone Number](#)
- [Knowledge Base](#)
- [Manage Your Account](#)

**Keep Me Informed**

