


Ordering number CA10561_OSS-2-RS

Family	Rose	FWHM	7 degrees
Type	Assembly	Efficiency	(simulated) 0 %
LED	Golden Dragon+	cd/lm	35.500
Color	White	Gerber File	Available
Diameter	21.6 + 21.6 mm		
Height	13.9 mm		
Style	Square		
Optic Material	PMMA		
Holder Material	PC		
Fastening	Tape		
Status	Ready		


Ordering number CA10560_OSS-2-SS

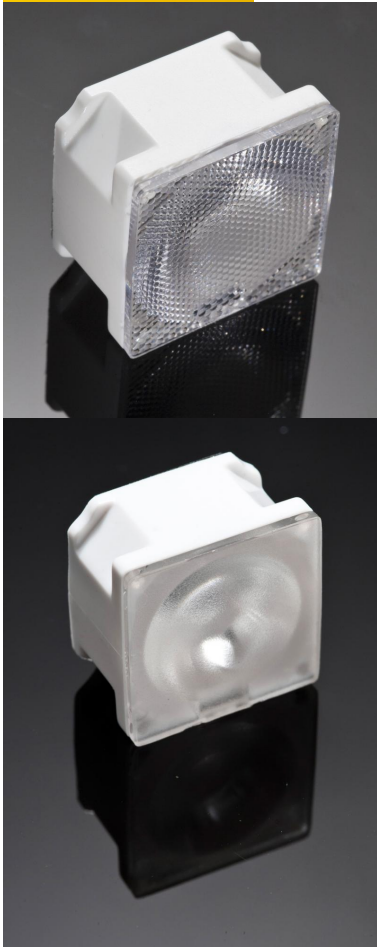
Family	Rose	FWHM	12 degrees
Type	Assembly	Efficiency	92 %
LED	Golden Dragon+	cd/lm	16.000
Color	White	Gerber File	Available
Diameter	21.6 + 21.6 mm		
Height	13.9 mm		
Style	Square		
Optic Material	PMMA		
Holder Material	PC		
Fastening	Tape		
Status	Ready		


Ordering number CA10559_OSS-2-D

Family	Rose	FWHM	13 degrees
Type	Assembly	Efficiency	(simulated) 0 %
LED	Golden Dragon+	cd/lm	11.210
Color	White	Gerber File	Available
Diameter	21.6 + 21.6 mm		
Height	13.9 mm		
Style	Square		
Optic Material	PMMA		
Holder Material	PC		
Fastening	Tape		
Status	Ready		


Ordering number CA10572_OSS-2-O

Family	Rose	FWHM	13+37 degrees
Type	Assembly	Efficiency	(simulated) 0 %
LED	Golden Dragon+	cd/lm	4.100
Color	White	Gerber File	Available
Diameter	21.6 + 21.6 mm		
Height	13.9 mm		
Style	Square		
Optic Material	PMMA		
Holder Material	PC		
Fastening	Tape		
Status	Ready		

**Ordering number CA10569_OSS-2-M**

Family	Rose	FWHM	24 degrees
Type	Assembly	Efficiency	(simulated) 0 %
LED	Golden Dragon+	cd/lm	4.360
Color	White	Gerber File	Available
Diameter	21.6 + 21.6 mm		
Height	13.9 mm		
Style	Square		
Optic Material	PMMA		
Holder Material	PC		
Fastening	Tape		
Status	Ready		

Ordering number CA12081_OSS-2-WWW

Family	Rose	FWHM	80 degrees
Type	Assembly	Efficiency	(simulated) 0 %
LED	Golden Dragon+	cd/lm	-
Color	White	Gerber File	Available
Diameter	21.6 + 21.6 mm		
Height	13.9 mm		
Style	Square		
Optic Material	PMMA		
Holder Material	PC		
Fastening	Tape		
Status	Ready		

NOTE: The typical divergence will be changed by different color, chip size and chip position tolerance. The typical total divergence is the full angle measured where the luminous intensity is half of the peak value.



PRODUCT DATASHEET Rose series

last update 23/7/2012



GENERAL INFORMATION

- Product series especially designed & optimized for Golden Dragon+ series of LEDs.
- Special care taken to make light distribution as uniform as possible.
- Lens material optical grade PMMA with high UV and temperature resistance (105 degrees of Celcius / 220 degrees of Fahrenheit). Allows use of high current and temperature conditions.

Please find more information about used material from below:

http://ledil.fi/sites/default/files/Documents/Technical/Material/PMMA%20N%20UL94_Yellow%20Card.pdf

<http://ledil.fi/sites/default/files/Documents/Technical/Material/PMMA%20N%20PLEXIGLAS-Datasheet.pdf>

- Optic holder molded by high quality PC material (120 degrees of Celcius / 248 degrees of Fahrenheit).

- Fastening to heat sink with a PU foam adhesive tape of automotive grade. Please find fastening details by clicking link: http://www.ledil.com/datasheets/DataSheet_TAPE.pdf

NOTE 1: We advise customer to ensure the suitability and sufficiency of the bond in the end product. For example, mechanical stress, vibration and holes on the surface of the circuit board weaken the strength of the tape.

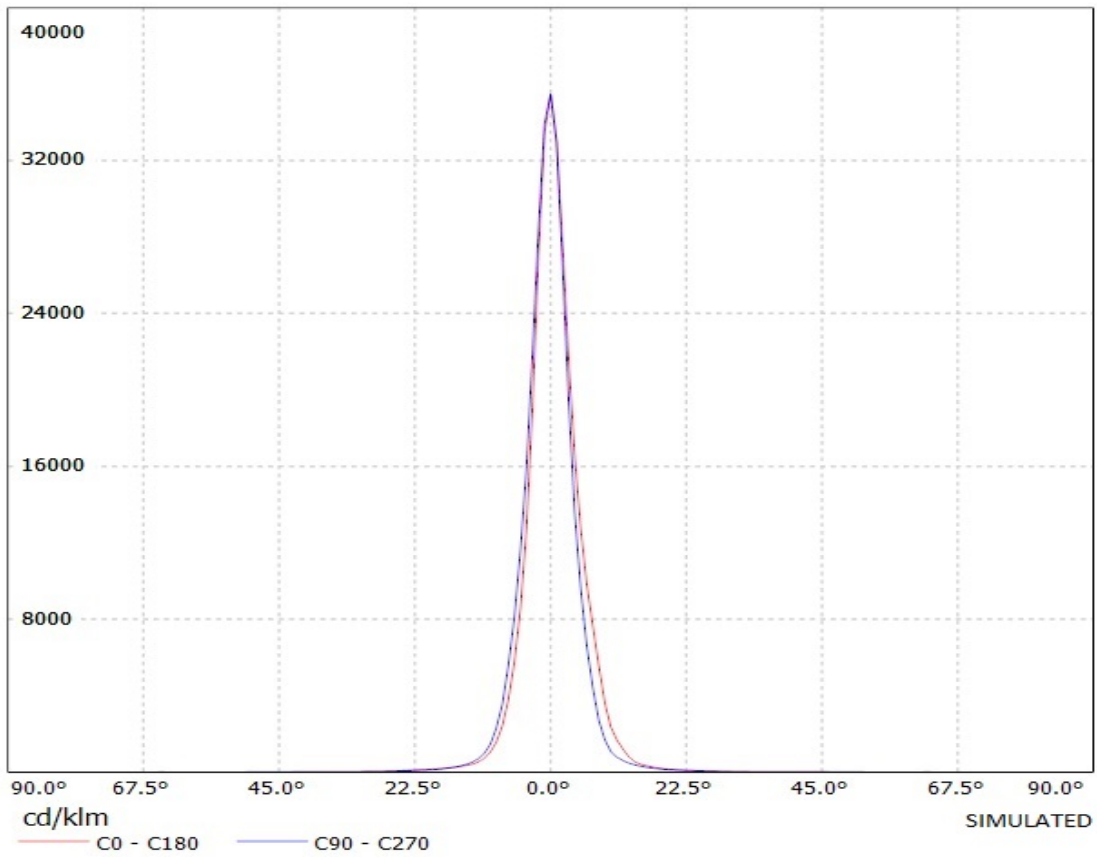
NOTE 2: Assembly to the surface must be made straight, so the tape bonds constant and balanced with fastening surface. Slanted assembly might cause unbalanced bond to the surface. All surfaces where tape is applied must be clean, dry and free from grease and dirt.

If cleaning of PCB surfaces is needed, please follow strictly the cleaning instructions of your LED manufacturer - this is important as cleaning shall under no circumstances damage LEDs or other electronics components on the PCB.

Further note that optical components shall not be cleaned with any chemicals - only micro fiber cloth may be used to remove fingerprints or other traces from handling.

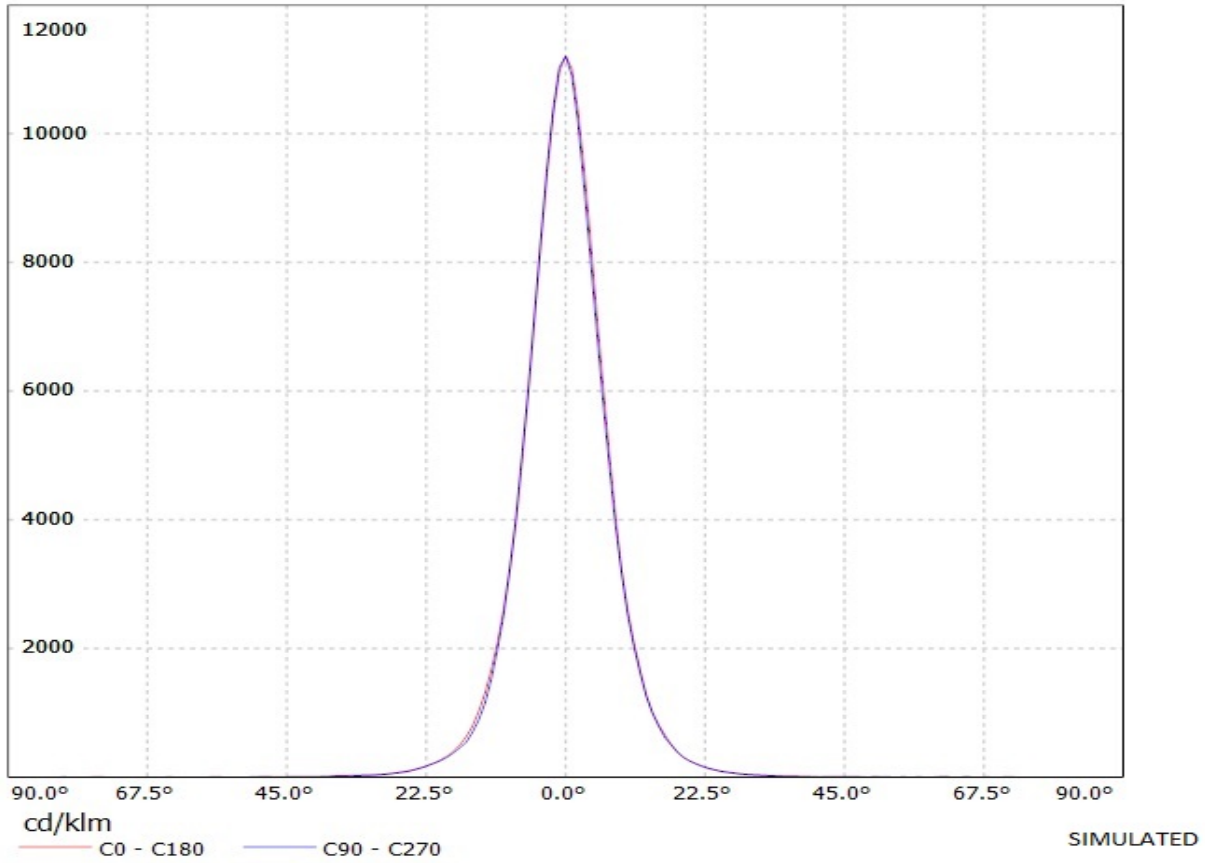
Ledil oy CA10561_OSS-2-RS (Golden Dragon+) LOR=92% / LDC (Linear)

Luminaire: Ledil oy CA10561_OSS-2-RS (Golden Dragon+) LOR=92%
Lamps: 1 x Osram Golden Dragon+ 67lm @ 250mA



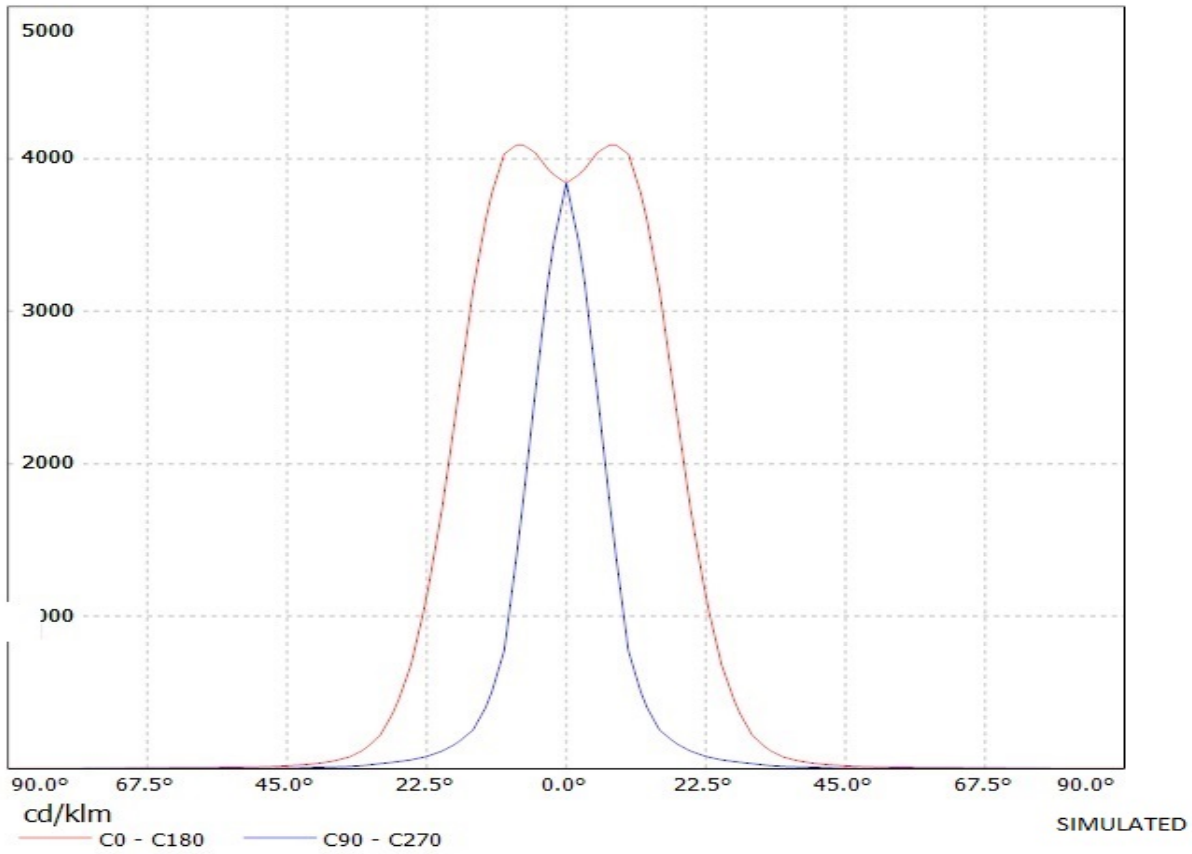
Ledil oy CA10559_OSS-2-D (Golden Dragon+) LOR=92% / LDC (Linear)

Luminaire: Ledil oy CA10559_OSS-2-D (Golden Dragon+) LOR=92%
Lamps: 1 x Osram Golden Dragon+ 67lm @ 250mA



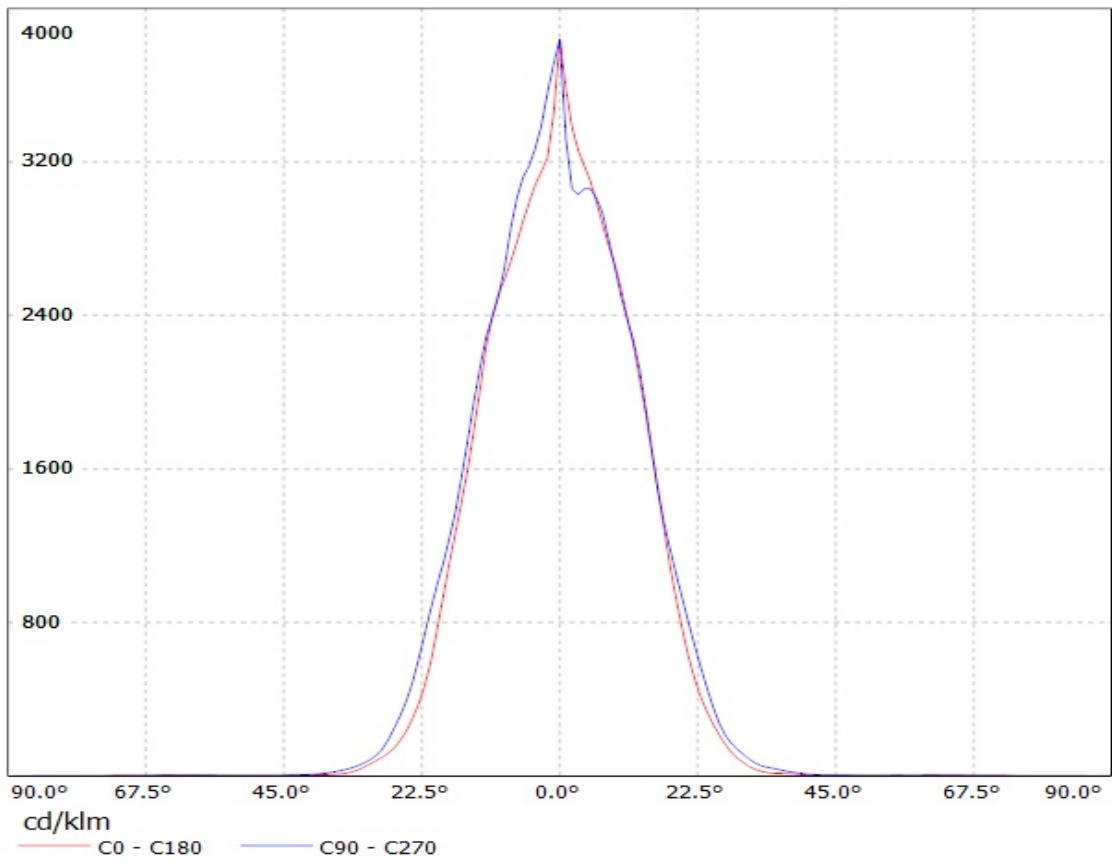
Ledil Oy CA10572-OSS-2-O LOR=93% / LDC (Linear)

Luminaire: Ledil Oy CA10572-OSS-2-O LOR=93%
Lamps: 1 x Golden dragon plus 80lm 250mA



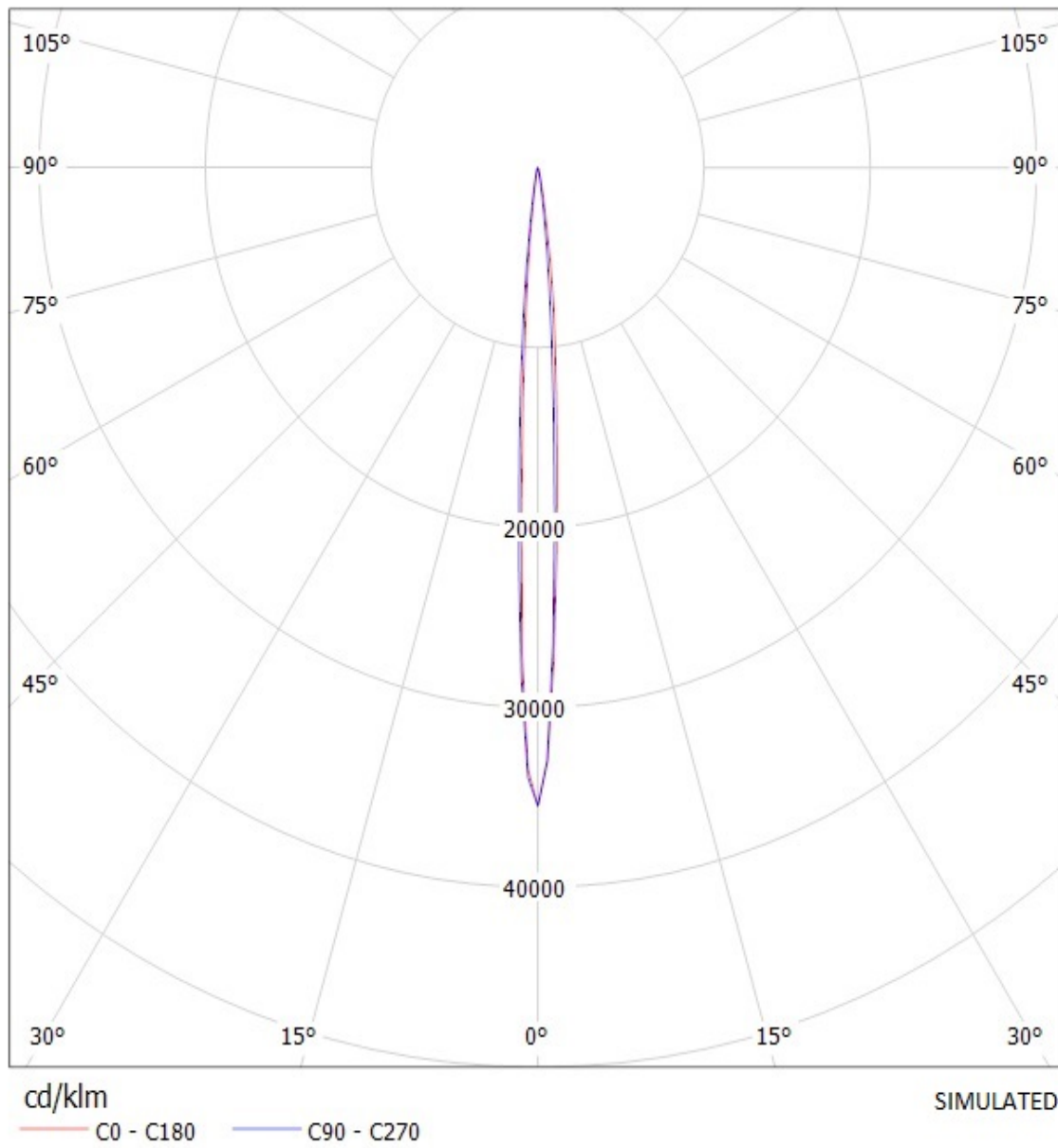
Ledil Oy CA10569_OSS-2-M-GD+_SIMULATED / LDC (Linear)

Luminaire: Ledil Oy CA10569_OSS-2-M-GD+_SIMULATED
Lamps: 1 x Golden Dragon Plus 100lm



Ledil oy CA10561_OSS-2-RS (Golden Dragon+) LOR=92% / LDC (Polar)

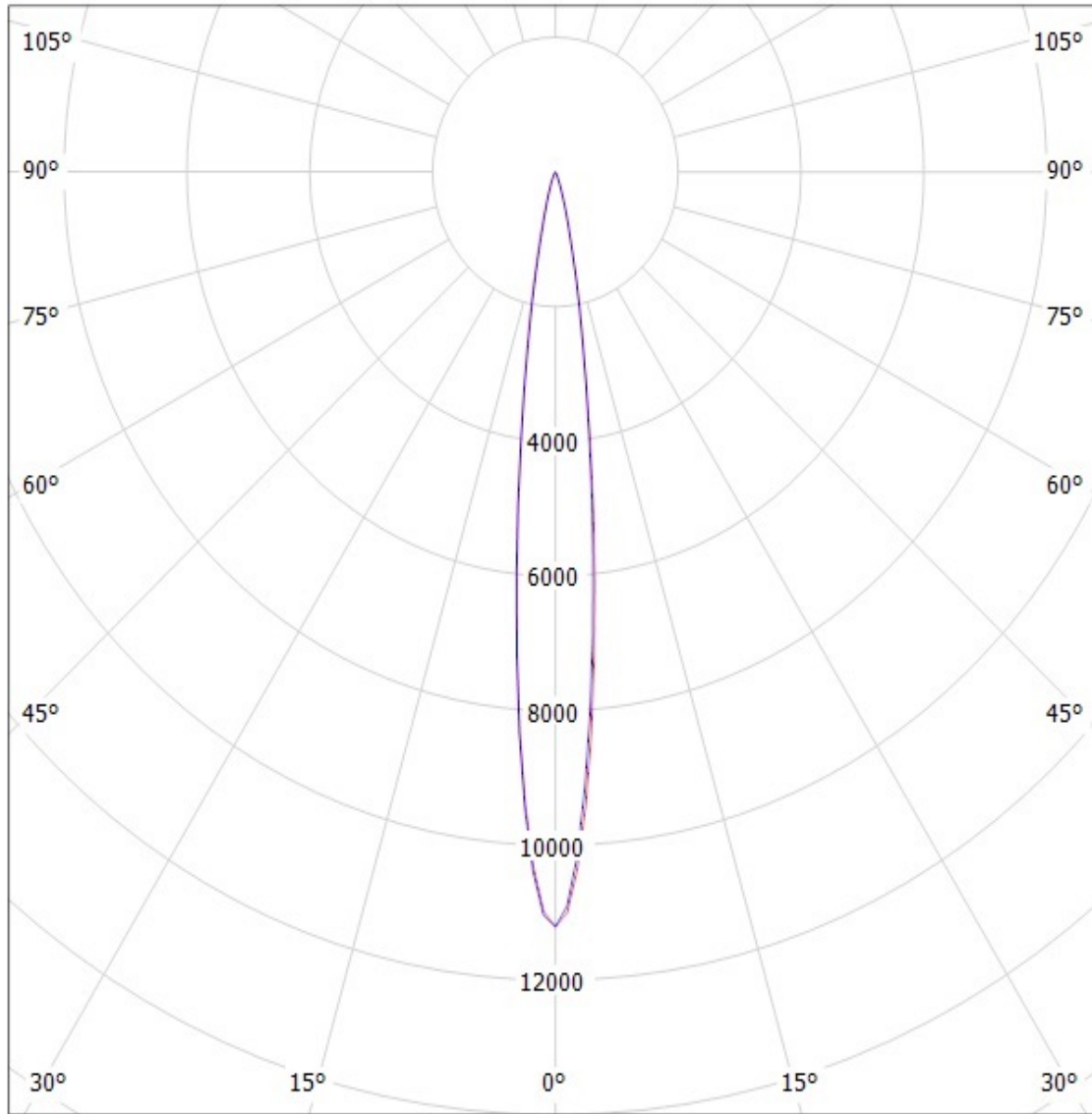
Luminaire: Ledil oy CA10561_OSS-2-RS (Golden Dragon+) LOR=92%
Lamps: 1 x Osram Golden Dragon+ 67lm @ 250mA



Ledil oy CA10559_OSS-2-D (Golden Dragon+) LOR=92% / LDC (Polar)

Luminaire: Ledil oy CA10559_OSS-2-D (Golden Dragon+) LOR=92%

Lamps: 1 x Osram Golden Dragon+ 67lm @ 250mA



cd/klm

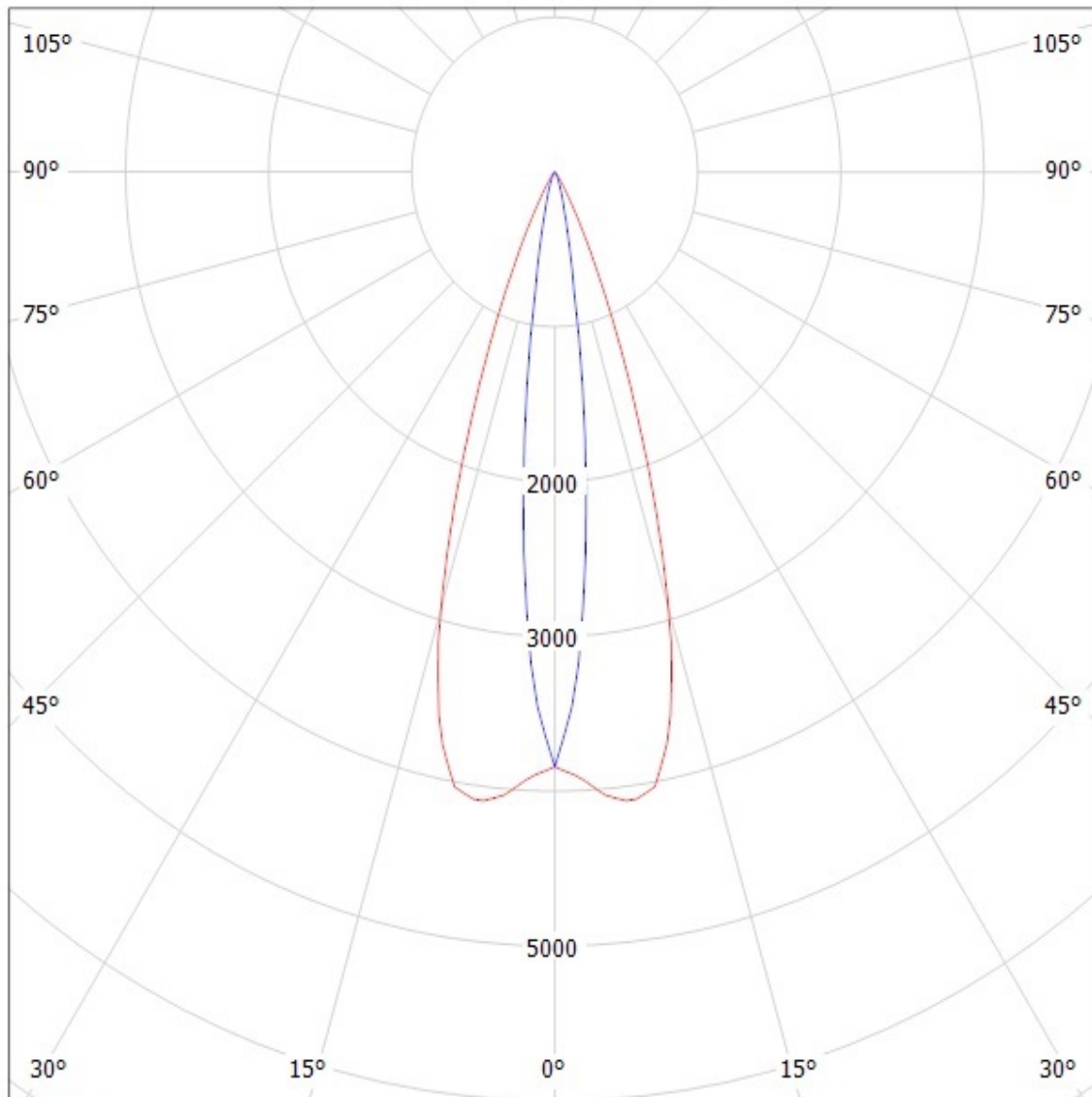
SIMULATED

— C0 - C180 — C90 - C270

Ledil Oy CA10572-OSS-2-O LOR=93% / LDC (Polar)

Luminaire: Ledil Oy CA10572-OSS-2-O LOR=93%

Lamps: 1 x Golden dragon plus 80lm 250mA



cd/klm

— C0 - C180

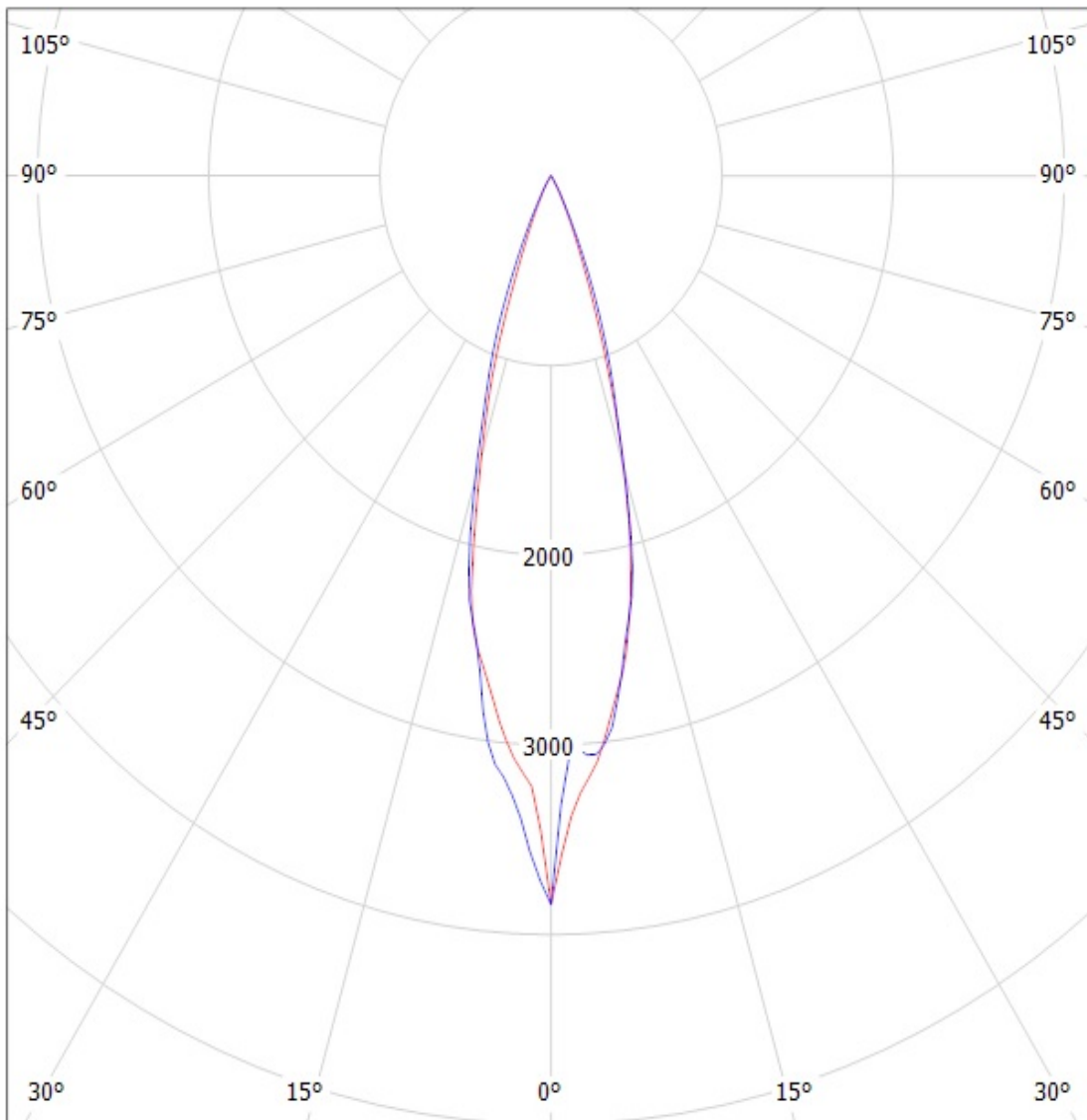
— C90 - C270

SIMULATED

Ledil Oy CA10569_OSS-2-M-GD+_SIMULATED / LDC (Polar)

Luminaire: Ledil Oy CA10569_OSS-2-M-GD+_SIMULATED

Lamps: 1 x Golden Dragon Plus 100lm



cd/klm

— C0 - C180

— C90 - C270