



<b>Ordering number</b>	<b>C12469</b>		
<b>Description</b>	<b>1</b>		
Family	Lisa2	FWHM	82 degrees
Type	Reflector	Efficiency	86 %
LED	XP-E	cd/lm	0.350
Color	White	Gerber File	Available
Diameter	9.9 mm		
Height	6.5 mm		
Style	Round		
Optic Material	PC		
Holder Material	-		
Fastening	-		
Status	On production		

**NOTE: The typical divergence will be changed by different color, chip size and chip position tolerance. The typical total divergence is the full angle measured where the luminous intensity is half of the peak value.**



## PRODUCT DATASHEET

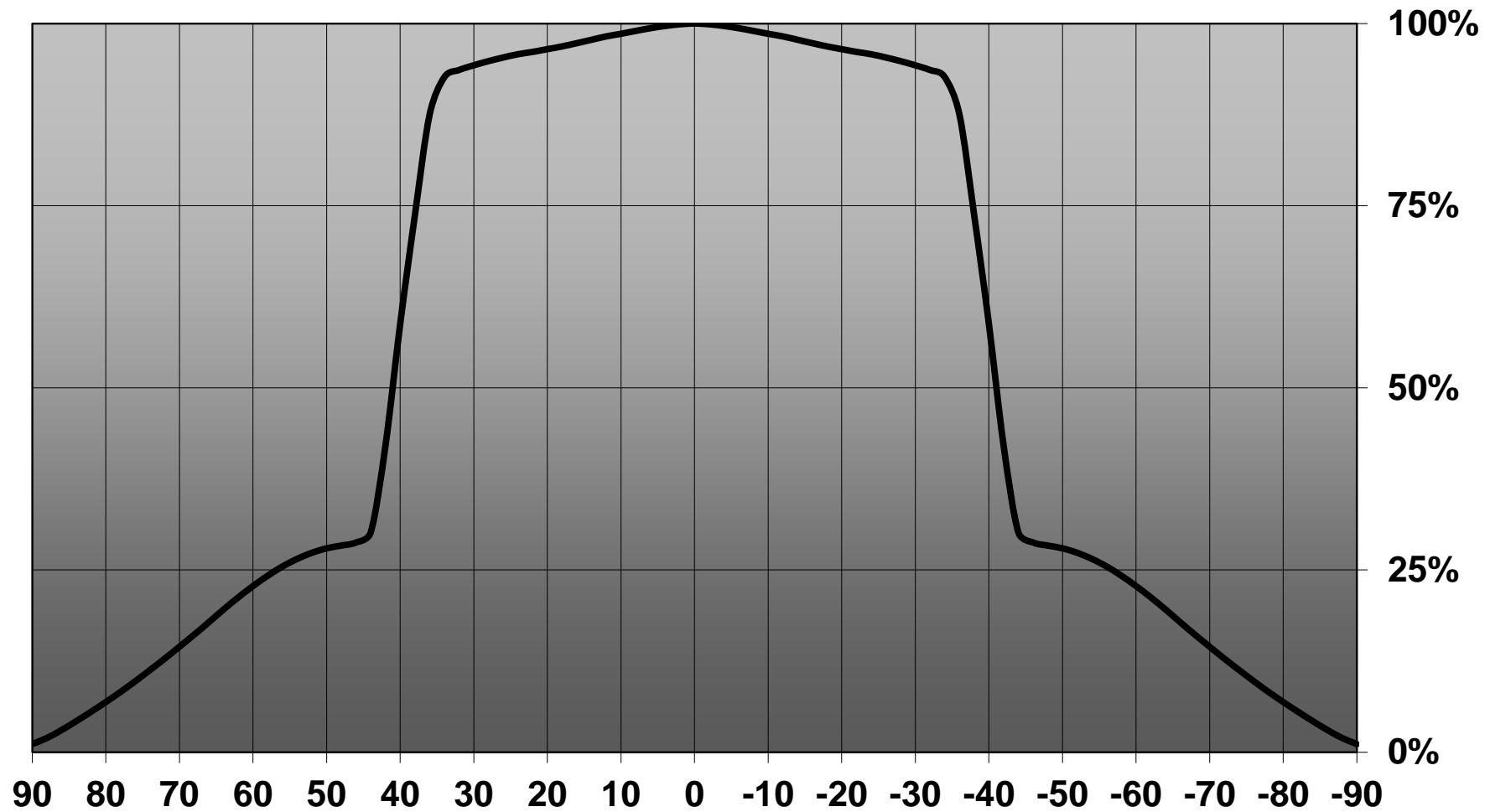
### Lisa2 series

last update 27/9/2013

#### GENERAL INFORMATION

- Product series especially designed & optimized for XP-E series of LEDs.
- Special care taken to make light distribution as uniform as possible.
- Reflector is made of aluminium coated PC (120 degrees of Celcius / 248 degrees of Fahrenheit) with protective lacquer (110 degrees of Celcius / 230 degrees of Fahrenheit).

Relative intensity of C12469\_LISA2-R-PIN (XP-E)

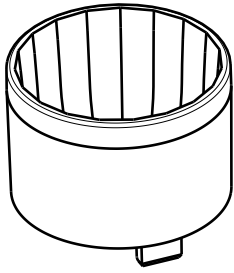


D

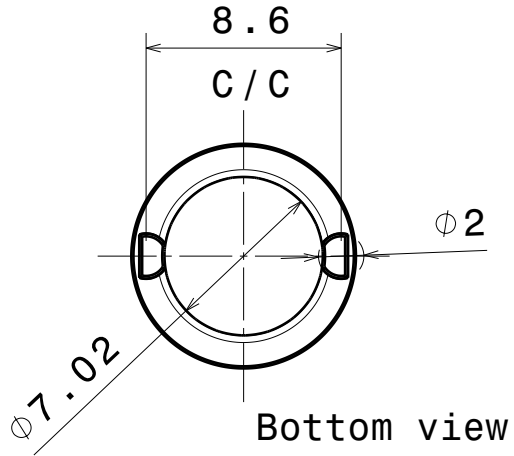
C

B

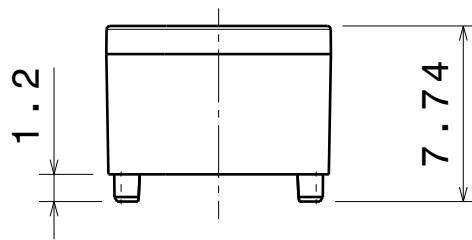
A



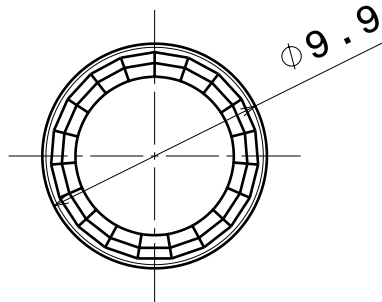
Isometric view



Bottom view



Front view



Top view

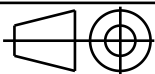
Reflector material : PC

Tolerances if not otherwise shown  
 According to DIN ISO 2768-1  
 Linear measures:  
 Up to 30mm class F, otherwise class M.  
 According to DIN ISO 2768-2  
 Form and position: class K



Ledil Oy  
 Salorankatu 10  
 FIN 24240 SALO  
 Finland

THIRD ANGLE PROJECTION:



DRAWING TITLE

Datasheet\_Lisa2-reflector

This drawing is the property  
 of LEDiL Oy. It may not be  
 reproduced, copied or  
 communicated without a written  
 agreement with LEDiL Oy."

SIZE	PART NUMBER
A4	-

SCALE	3:1	WEIGHT	-
-------	-----	--------	---

SHEET	1/1
-------	-----

D

A

4

4

3

3

2

2

1

1