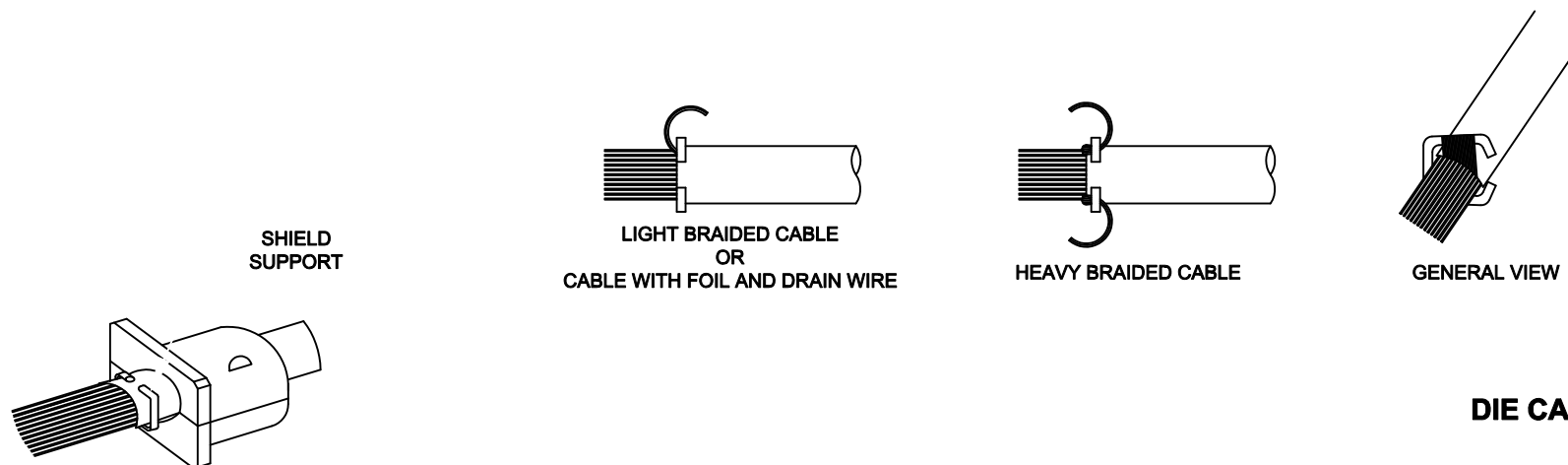


- ASSEMBLY INSTRUCTIONS:**
1. PREPARE CABLE AS REQUIRED TO ASSEMBLE TO THE CONNECTOR.
  2. CHOOSE THE STRAIN RELIEF HALVES THAT MOST CLOSELY MATCH THE CABLE DIAMETER. THEY DO NOT NEED TO BE MATCHING HALVES.
  3. USE THE METAL SHIELD SUPPORT TO CAPTURE THE BRAID/DRAIN WIRE. PLACE STRAIN RELIEF HALVES INTO THE HOOD HALVES.
  4. PLACE THE CABLE ASSEMBLY/SHIELD SUPPORT INTO THE APPROPRIATE RECESS IN ONE HALF OF THE DIE CAST HOOD. ENSURE THE CABLE IS PRESSED INTO THE STRAIN RELIEF PIECE.
  5. SNAP THE JACKSCREWS INTO POSITION AND POSITION CONNECTOR INTO THE BOTTOM HOOD HALF.
  6. PLACE THE OTHER HALF OF THE DIE CAST HOOD INTO PLACE AND TIGHTEN TOGETHER WITH THE ASSEMBLY SCREWS.



SHIELD NOT SHOWN  
FOR CLARITY

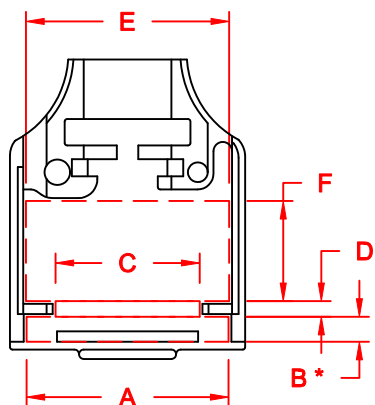
## DIE CAST

THESE DRAWINGS AND SPECIFICATIONS ARE THE PROPERTY OF MH CONNECTORS LTD. AND SHALL NOT BE REPRODUCED, COPIED OR USED AS THE BASIS FOR THE MANUFACTURE OR SALE OF APPARATUS WITHOUT WRITTEN PERMISSION.

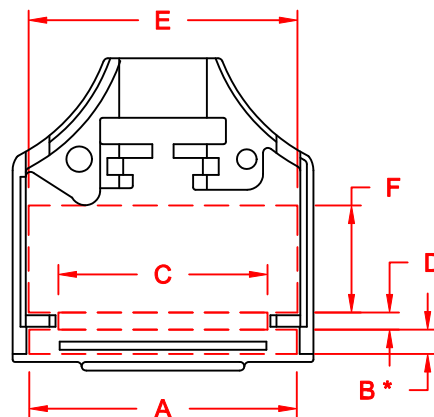
DRAWN P. JENKINS		DATE 03-23-12	
APPROVED D. CROFT		DATE 03-23-12	
SCALE NTS	SHEET 1	OF 1	REV: A
DRAWING No MHD TZK ASSEMBLY			



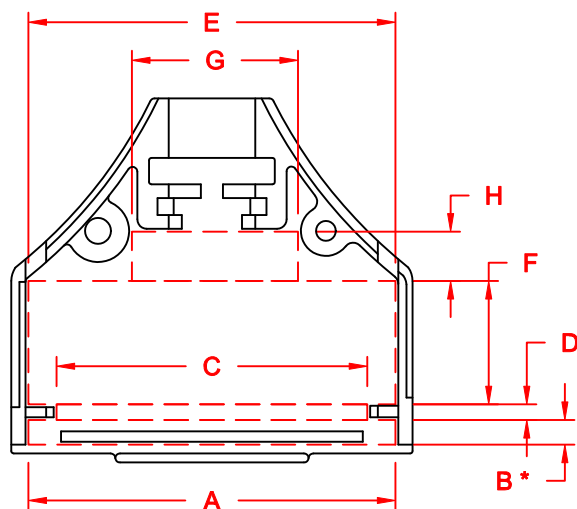
**MH CONNECTORS LTD.**



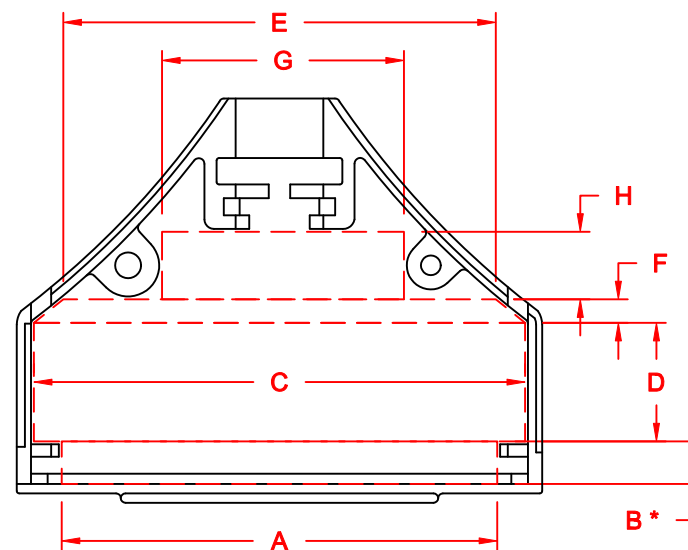
9-PIN



15-PIN



25-PIN



37-PIN

# DIMENSIONS (mm)

	9	15	25	37
A	26.92	35.68	48.97	58.11
B *	3.32	3.25	3.27	5.68
C	19.22	27.91	41.45	65.53
D	2.10	2.28	2.10	15.82
E	27.10	35.86	48.97	57.68
F	13.36	14.27	16.45	3.14
G			22.14	32.25
H			6.57	6.57
PCB	X	10.76	11.02	11.20

SEE NOTE 1.

SEE NOTE 2.

## NOTE:

- "B" DIMENSION MEASURED FROM BACK SIDE OF CONNECTOR FLANGE
- MIN. SAFE SPACING BETWEEN BACK SHELLS FOR PCB AND MOUNTED COMPONENTS
- THESE DIMENSIONS ARE GOOD FOR THE BLACK CHROMATE AND NICKEL PLATED DIE CAST BACK SHELLS

**DIE CAST**

THESE DRAWINGS AND SPECIFICATIONS ARE THE PROPERTY OF MH CONNECTORS LTD. AND SHALL NOT BE REPRODUCED, COPIED OR USED AS THE BASIS FOR THE MANUFACTURE OR SALE OF APPARATUS WITHOUT WRITTEN PERMISSION.

DRAWN	P. JENKINS	DATE	03-23-12
APPROVED	D. CROFT	DATE	03-23-12
SCALE	NTS	SHEET OF	1 OF 1
DRAWING No	MHDTZK ASSEMBLY	REV:	A

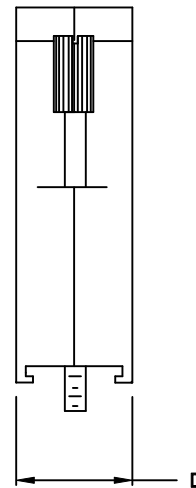
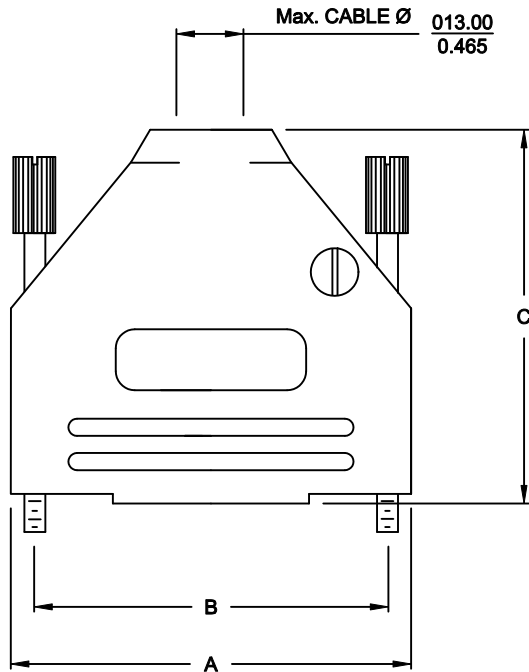


**MH CONNECTORS LTD.**

## BACKSHELL KIT INCLUDES:

- (2) BACKSHELL HALVES
- (2) 4-40 THUMBSCREWS
- (2) HOUSING SCREWS
- (1) SET OF COMPRESSION INSERTS - VARIOUS SIZES  
DIAMETERS 4mm (.157"), 5mm (.167"), 7mm (.276"), 9mm(.354")
- (1) COMPRESSION SPRING

DIMENSIONS (mm/in)				
SIZE	A $\pm .25$ $\pm 0.10$	B $\pm .13$ $\pm .005$	C $\pm .25$ $\pm 0.10$	D $\pm .25$ $\pm 0.10$
9	31.20	24.99	39.90	15.00
	1.228	0.984	1.571	0.591
15	39.50	33.32	41.50	15.00
	1.555	1.312	1.634	0.591
25	53.40	47.04	48.60	15.00
	2.102	1.852	1.913	0.591
37	69.70	63.50	53.60	15.00
	2.744	2.500	2.110	0.591



## ORDERING INFORMATION:

SIZE	P/N - KITTED	PRODUCT CODE:
9-WAY	6560-0805-01	MHDTZK-9-K
15-WAY	6560-0805-02	MHDTZK-15-K
25-WAY	6560-0805-03	MHDTZK-25-K
37-WAY	6560-0805-04	MHDTZK-37-K

SIZE	P/N - BULK	PRODUCT CODE:
9-WAY	6561-0805-01	MHDTZK-9
15-WAY	6561-0805-02	MHDTZK-15
25-WAY	6561-0805-03	MHDTZK-25
37-WAY	6561-0805-04	MHDTZK-37

**BACKSHELL MATERIAL:** DIE-CAST ZINC ALLOY  
**PLATING:** NICKEL  
**JACKSCREWS:** STEEL: Zn PLATED  
**M3 HOODSCREWS:** STEEL: Zn PLATED  
**COMPRESSION INSERT:** ABS, UL RECOGNIZED  
**COMPRESSION SPRING:** STEEL, NICKEL PLATED  
**OPERATING TEMP:** -40°C TO +120°C

THESE DRAWINGS AND SPECIFICATIONS ARE THE PROPERTY OF MH CONNECTORS LTD. AND SHALL NOT BE REPRODUCED, COPIED OR USED AS THE BASIS FOR THE MANUFACTURE OR SALE OF APPARATUS WITHOUT WRITTEN PERMISSION.

DRAWN		DATE	
P. JENKINS		03-14-12	
APPROVED		DATE	
D. CROFT		03-14-12	
SCALE	SHEET	OF	REV:
NTS	1	1	A
DRAWING No			
MHDTZK SERIES			

RoHS COMPLIANT



MH CONNECTORS LTD.