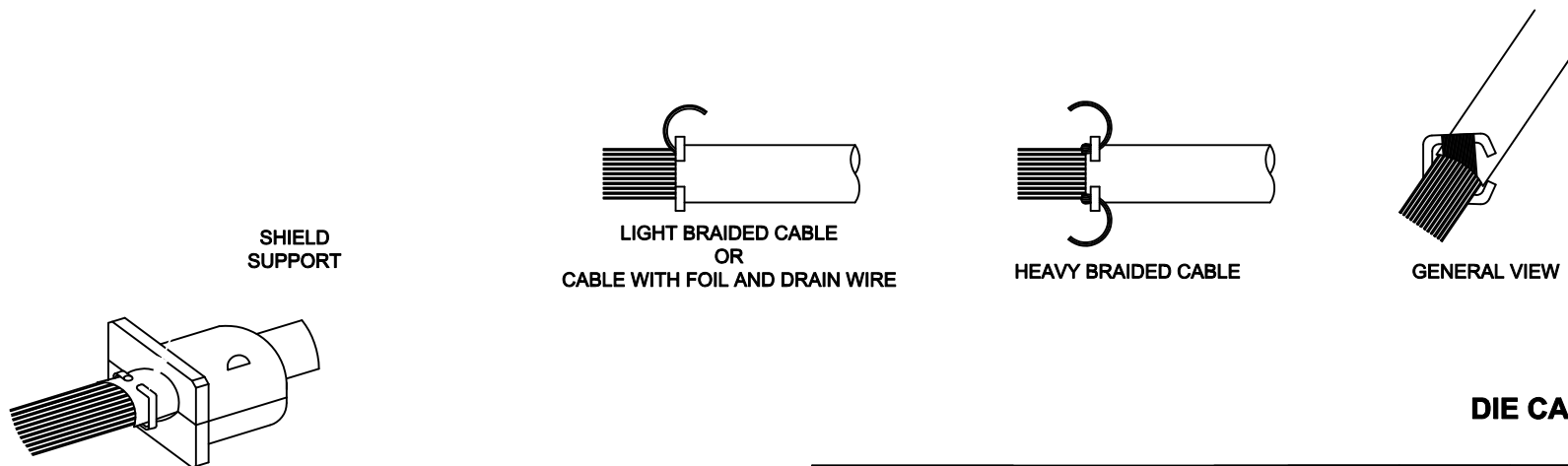


- ASSEMBLY INSTRUCTIONS:**
1. PREPARE CABLE AS REQUIRED TO ASSEMBLE TO THE CONNECTOR.
 2. CHOOSE THE STRAIN RELIEF HALVES THAT MOST CLOSELY MATCH THE CABLE DIAMETER. THEY DO NOT NEED TO BE MATCHING HALVES.
 3. USE THE METAL SHIELD SUPPORT TO CAPTURE THE BRAID/DRAIN WIRE. PLACE STRAIN RELIEF HALVES INTO THE HOOD HALVES.
 4. PLACE THE CABLE ASSEMBLY/SHIELD SUPPORT INTO THE APPROPRIATE RECESS IN ONE HALF OF THE DIE CAST HOOD. ENSURE THE CABLE IS PRESSED INTO THE STRAIN RELIEF PIECE.
 5. SNAP THE JACKSCREWS INTO POSITION AND POSITION CONNECTOR INTO THE BOTTOM HOOD HALF.
 6. PLACE THE OTHER HALF OF THE DIE CAST HOOD INTO PLACE AND TIGHTEN TOGETHER WITH THE ASSEMBLY SCREWS.



DIE CAST

THESE DRAWINGS AND SPECIFICATIONS ARE THE PROPERTY OF MH CONNECTORS LTD. AND SHALL NOT BE REPRODUCED, COPIED OR USED AS THE BASIS FOR THE MANUFACTURE OR SALE OF APPARATUS WITHOUT WRITTEN PERMISSION.

DRAWN P. JENKINS		DATE 03-23-12	
APPROVED D. CROFT		DATE 03-23-12	
SCALE NTS	SHEET 1	OF 1	REV: A
DRAWING No MHDZK ASSEMBLY			

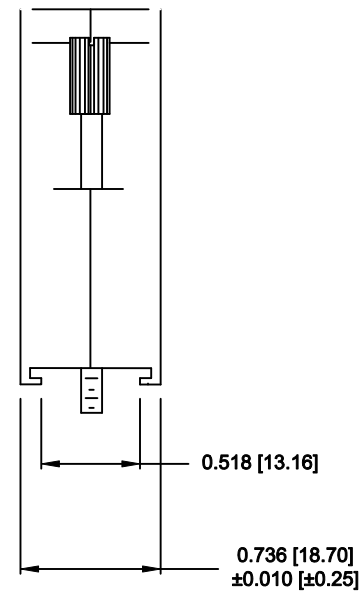
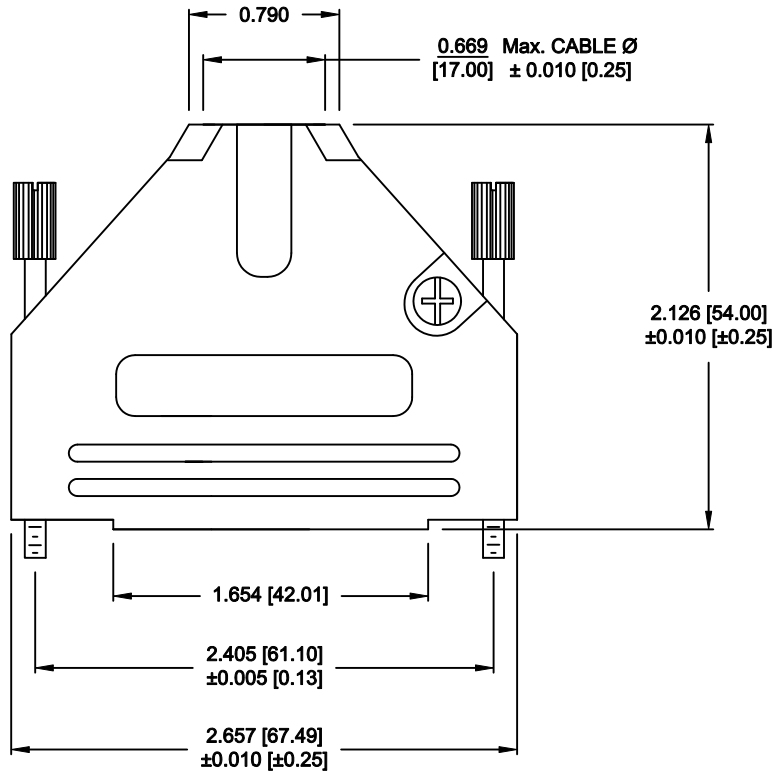


MH CONNECTORS LTD.

BACKSHELL KIT INCLUDES:

- (2) BACKSHELL HALVES
- (2) 4-40 THUMBSCREWS
- (2) HOUSING SCREWS
- (2) STRAIN RELIEF SCREWS
- (1) STRAIN RELIEF
- (1) SET OF COMPRESSION INSERTS - VARIOUS SIZES
DIAMETERS: 0.433[11.00], 0.492[12.50], 0.551[14.00], 0.591[15.00] & 0.669[17.00] (WITHOUT GROMMET)

MATERIAL: DIE-CAST ZINC ALLOY
PLATING: NICKEL OVER COPPER
JACKSCREWS: STEEL, ZINC PLATED
M3 HOODSCREWS: STEEL, ZINC PLATED
COMPRESSION INSERT: ABS UL RECOGNIZED
OPERATING TEMP: -30°C TO +90°C



RoHS COMPLIANT

THESE DRAWINGS AND SPECIFICATIONS ARE THE PROPERTY OF MH CONNECTORS LTD. AND SHALL NOT BE REPRODUCED, COPIED OR USED AS THE BASIS FOR THE MANUFACTURE OR SALE OF APPARATUS WITHOUT WRITTEN PERMISSION.

DRAWN
M. SIGMON
DATE
09-26-13

APPROVED
D. CROFT
DATE
09-26-13



MH CONNECTORS LTD.

SCALE
NTS
SHEET
1
OF
1
REV:
A

DRAWING No
MHD TZK50-K