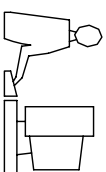


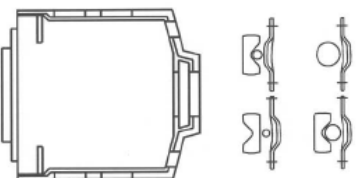
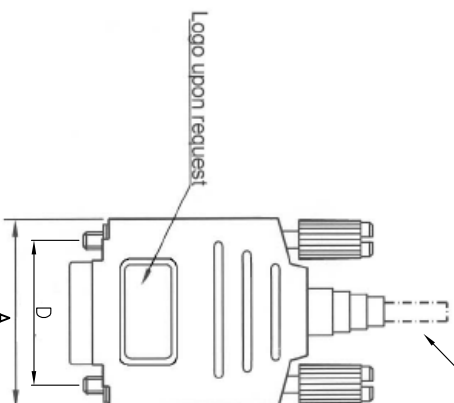
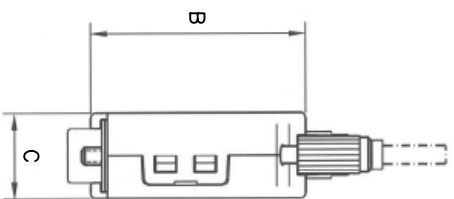
THIS IS A C.A.D. GENERATED DRAWING
DO NOT MAKE MANUAL REVISIONS TO MASTER.



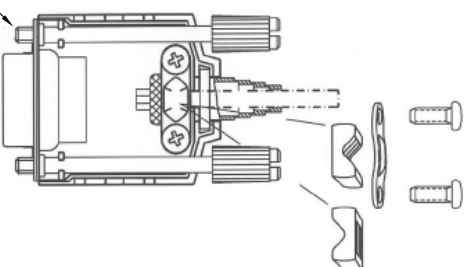
BACKSHELL KIT INCLUDES:

- (2) BACKSHELL HALVES
- (2) 4-40 THUMBSCREWS
- (2) CLAMP SCREWS
- (1) SET OF COMPRESSION INSERTS-VARIOUS SIZES FOR 9-37

max O.D. 11.5mm



Thread UNC4-40



DIMENSIONS(mm/in)				
SIZE	A ± 0.10	B ± 0.10	C ± 0.10	D ± 0.13
	9	15	25	37
9	32.5	38.0	15.00	24.99
15	1.280	1.496	0.591	0.984
	41.0	38.0	15.00	33.32
25	1.614	1.496	0.591	1.312
	54.5	40.0	15.00	47.04
37	2.146	1.575	0.591	1.852
	71.0	40.0	15.00	63.50
37	2.795	1.575	0.591	2.500

* UNLESS OTHERWISE SPECIFIED TOLERANCES
ON DECIMAL IS: ANGLE $\pm 1^\circ$
UNIT: MM .XX ± 0.35

ORDERING INFORMATION:

SIZE	P/N - KITTED	PRODUCT CODE
9-WAY	6260-0105-01	MHDPK-M-09-K
15-WAY	6260-0105-02	MHDPK-M-15-K
25-WAY	6260-0105-03	MHDPK-M-25-K
37-WAY	6260-0105-04	MHDPK-M-37-K

SIZE	P/N - BULK	PRODUCT CODE
9-WAY	6261-0105-01	MHDPK-M-09
15-WAY	6261-0105-02	MHDPK-M-15
25-WAY	6261-0105-03	MHDPK-M-25
37-WAY	6261-0105-04	MHDPK-M-37

BACKSHELL MATERIAL:
PLATING: NICKEL
JACKSCREWS: STEEL:ZN PLATED WITH PLASTIC KNOB
COMPRESSION INSERT: ABS,UL RECOGNIZED
CLAMP SCREW: STEEL:ZN PLATED
OPERATING TEMP: -55°C TO+110°C

THESE DRAWINGS AND SPECIFICATIONS ARE THE PROPERTY OF MH CONNECTORS LTD. AND SHALL NOT BE REPRODUCED, COPIED OR USED AS THE BASIS FOR THE MANUFACTURE OR SALE OF APPARATUS WITHOUT WRITTEN PERMISSION.		DRAWN Johnny	DATE 11-26-12
		APPROVED	DATE



THIS SERIES FULLY CONFORMS TO THE
EUROPEAN UNION DIRECTIVES 2002/95/EC
AND 2002/96/EC FOR ROHS COMPLIANCY.

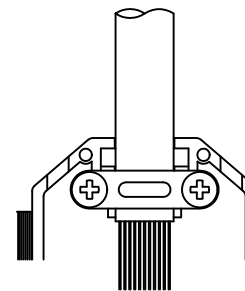
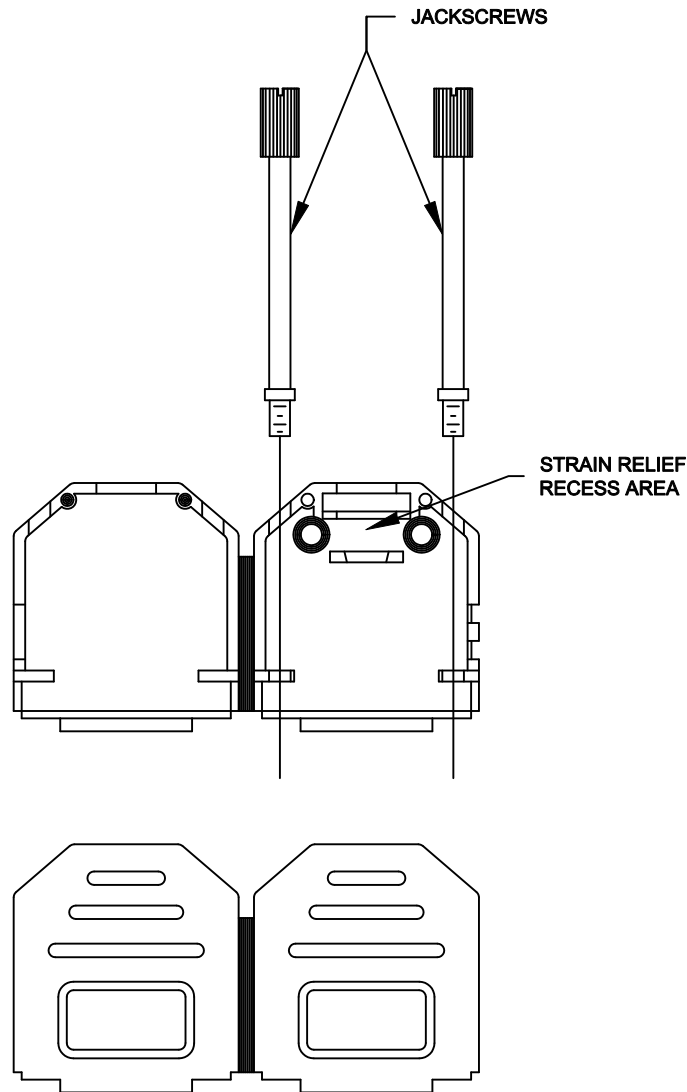


MH CONNECTORS LTD.

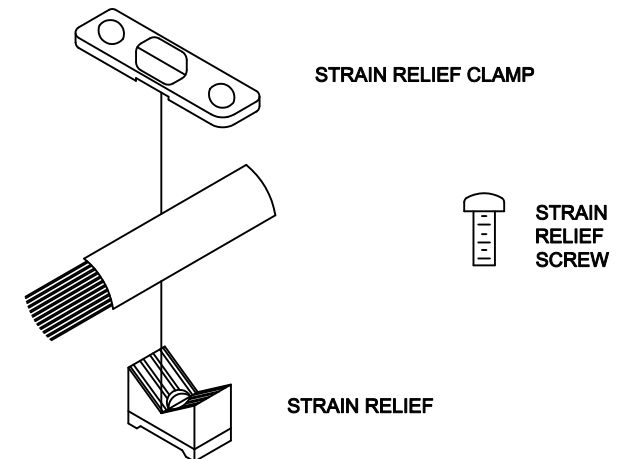
SCALE	SHEET OF	REV.
1:1	1 OF 1	1.0
DRAWING NO MHDPKXX-M		

ASSEMBLY INSTRUCTIONS:

1. PREPARE CABLE ENDS, CONNECT TO CONNECTOR
2. SNAP JACKSCREWS INTO PLACE.
3. SNAP STRAIN RELIEF INTO STRAIN RELIEF RECESS AREA ON RIGHT SIDE OF HOOD.
4. PLACE CABLE OVER STRAIN RELIEF MAKING SURE CABLE JACKET IS BELOW STRAIN RELIEF.
5. PLACE CABLE CLAMP OVER CABLE. USING SCREWS PROVIDED TIGHTEN CABLE CLAMP INTO PLACE. CABLE CLAMP MAY BE INSERTED UP SIDE DOWN FOR SMALLER CABLES.
6. PLACE CONNECTOR INTO THE RIGHT HALF OF THE BACKSHELL .
7. SNAP THE TWO HALVES OF THE HOOD TOGETHER MAKING SURE NO WIRES ARE PINCHED AND THE TWO PLASTIC SNAP PINS AT CABLE ENTRY ARE SEATED.



ITEM No. 3, 4 & 5



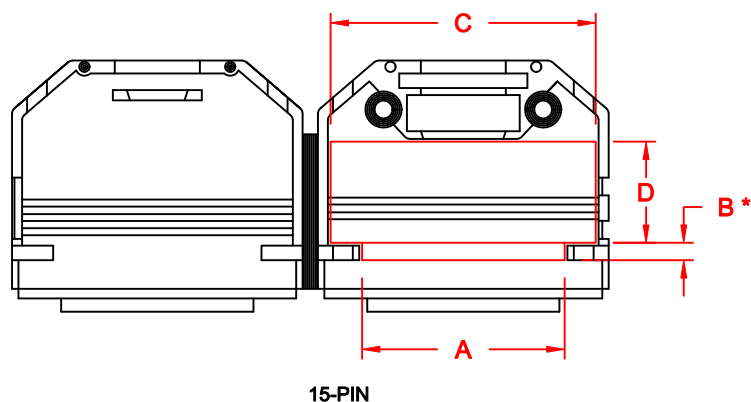
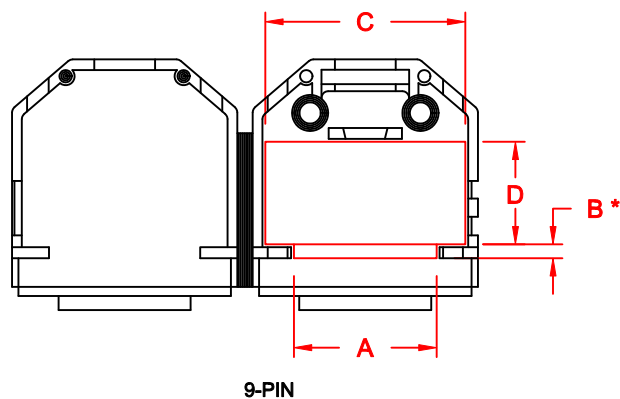
PLASTIC

THESE DRAWINGS AND SPECIFICATIONS ARE THE PROPERTY OF MH CONNECTORS LTD. AND SHALL NOT BE REPRODUCED, COPIED OR USED AS THE BASIS FOR THE MANUFACTURE OR SALE OF APPARATUS WITHOUT WRITTEN PERMISSION.

DRAWN P. JENKINS		DATE 03-23-12	
APPROVED D. CROFT		DATE 03-23-12	
SCALE NTS	SHEET 1	OF 1	REV: A
DRAWING No MHDPPK-SLIM ASSEMBLY			



MH CONNECTORS LTD.



SEE NOTE 1. →

SEE NOTE 2. →

	DIMENSIONS (mm)				
	9	15	25	37	50
A	19.30	27.17	SEE SHEET 2		SEE SHEET 3
B *	1.87	2.36			
C	27.05	35.86			
D	13.89	13.66			
PCB	10.49	8.45			

NOTE:

1. "B" DIMENSION MEASURED FROM BACK SIDE OF CONNECTOR FLANGE
2. MIN. SAFE SPACING BETWEEN BACK SHELLS FOR PCB AND MOUNTED COMPONENTS
3. THESE DIMENSIONS ARE GOOD FOR THE PLASTIC BACK SHELLS

PLASTIC

THESE DRAWINGS AND SPECIFICATIONS ARE THE PROPERTY OF MH CONNECTORS LTD. AND SHALL NOT BE REPRODUCED, COPIED OR USED AS THE BASIS FOR THE MANUFACTURE OR SALE OF APPARATUS WITHOUT WRITTEN PERMISSION.

DRAWN
P. JENKINS
DATE
03-23-12

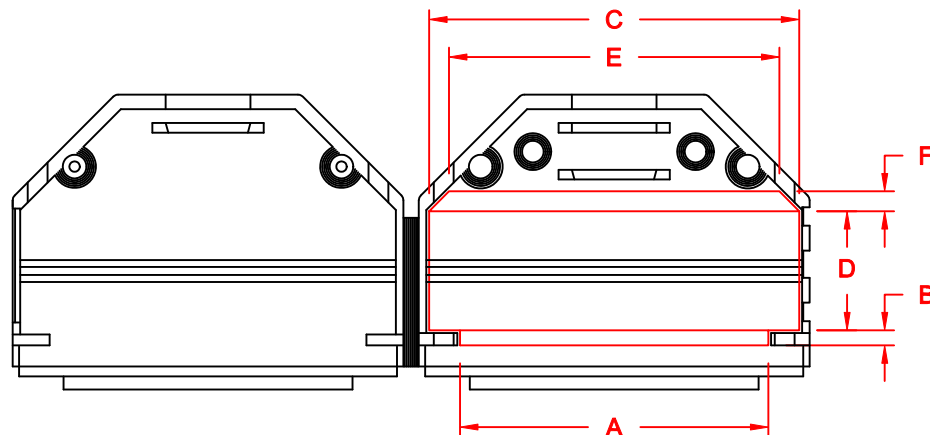
APPROVED
D. CROFT
DATE
03-23-12



MH CONNECTORS LTD.

SCALE
NTS
SHEET
1 OF 3
REV:
A

DRAWING No
MHDPPKSLIM INTERNAL



25-PIN

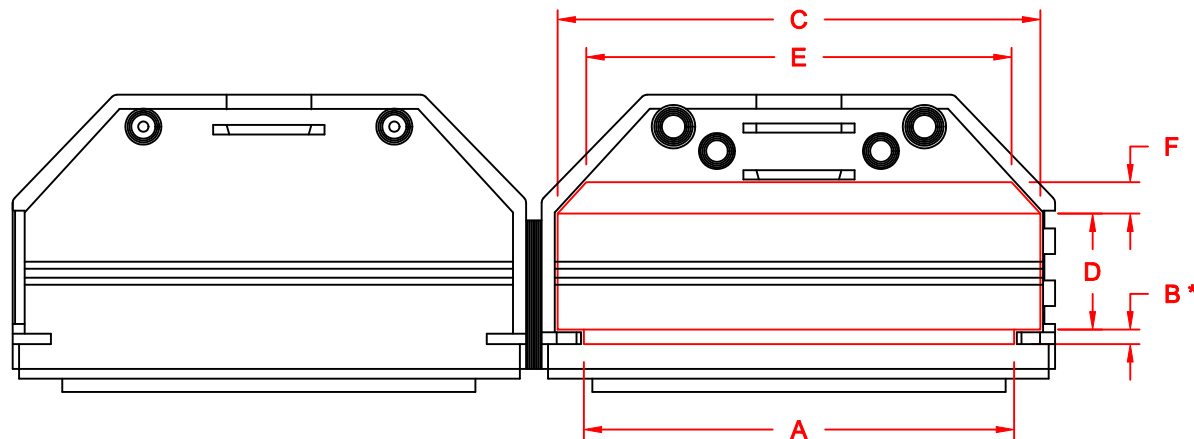
SEE NOTE 1. →

SEE NOTE 2. →

DIMENSIONS (mm)					
	9	15	25	37	50
A	SEE SHEET 1		41.68	58.16	SEE SHEET 3
B *			2.05	1.98	
C			50.03	65.27	
D			16.10	15.67	
E			44.65	57.50	
F			2.69	4.24	
PCB			8.58	8.38	

NOTE:

1. "B" DIMENSION MEASURED FROM BACK SIDE OF CONNECTOR FLANGE
2. MIN. SAFE SPACING BETWEEN BACK SHELLS FOR PCB AND MOUNTED COMPONENTS
3. THESE DIMENSIONS ARE GOOD FOR THE PLASTIC BACK SHELLS



37-PIN

PLASTIC

THESE DRAWINGS AND SPECIFICATIONS ARE THE PROPERTY OF MH CONNECTORS LTD. AND SHALL NOT BE REPRODUCED, COPIED OR USED AS THE BASIS FOR THE MANUFACTURE OR SALE OF APPARATUS WITHOUT WRITTEN PERMISSION.

DRAWN P. JENKINS		DATE 03-23-12	
APPROVED D. CROFT		DATE 03-23-12	
SCALE NTS	SHEET 2	OF 3	REV: A
DRAWING No MHDPPKSLIM INTERNAL			



MH CONNECTORS LTD.

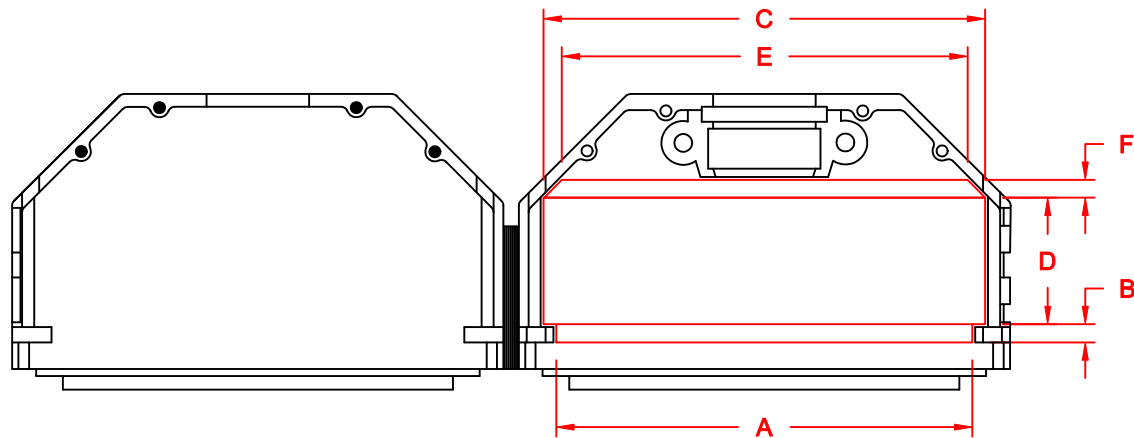
DIMENSIONS (mm)					
	9	15	25	37	50
A	SEE SHEET 1		SEE SHEET 2		56.26
B*					2.46
C					59.71
D					17.11
E					54.88
F					2.41
PCB					13.08

SEE NOTE 1. →

SEE NOTE 2. →

NOTE:

1. "B" DIMENSION MEASURED FROM BACK SIDE OF CONNECTOR FLANGE
2. MIN. SAFE SPACING BETWEEN BACK SHELLS FOR PCB AND MOUNTED COMPONENTS
3. THESE DIMENSIONS ARE GOOD FOR THE PLASTIC BACK SHELLS



50-PIN

PLASTIC

THESE DRAWINGS AND SPECIFICATIONS ARE THE PROPERTY OF MH CONNECTORS LTD. AND SHALL NOT BE REPRODUCED, COPIED OR USED AS THE BASIS FOR THE MANUFACTURE OR SALE OF APPARATUS WITHOUT WRITTEN PERMISSION.

DRAWN
P. JENKINS
DATE
03-23-12

APPROVED
D. CROFT
DATE
03-23-12



MH CONNECTORS LTD.

SCALE
NTS
SHEET
3 OF 3
REV:
A

DRAWING No
MHDPPKSLIM INTERNAL