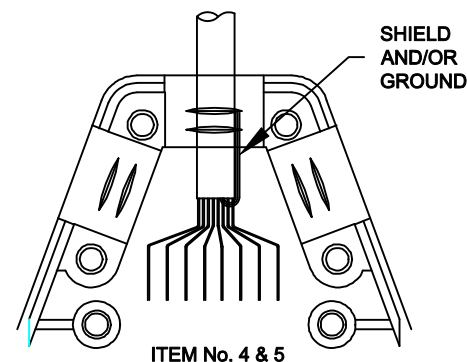
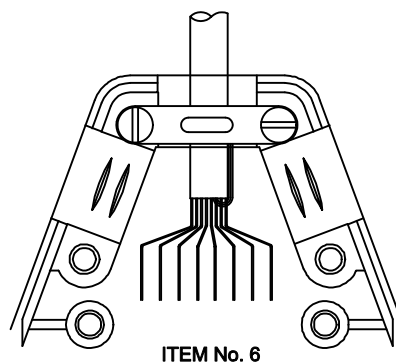


- ASSEMBLY INSTRUCTIONS:**
1. PREPARE CABLE ENDS, CONNECT TO CONNECTOR.
  2. IF THE JACKSCREWS ARE NOT IN PLACE, SNAP THEM INTO THE BACKSHELL.
  3. SELECT THE CABLE ENTRY PORT NEEDED, PLACE THE SLOT BLOCKING TABS IN THE OTHER TWO POSITIONS MAKING SURE THEY ARE FULLY SEATED.
  4. PLACE CABLE IN SELECTED STRAIN RELIEF RECESS AREA MAKING SURE CABLE JACKET IS BELOW STRAIN RELIEF. ENSURE THE CABLE IS PRESSED INTO THE STRAIN RELIEF RECESS AREA.
  5. IF CABLE IS SHIELDED, FOLD SHIELD AND/OR GROUND WIRE BACK OVER THE CLAMP AREA. CUT ANY EXCESS WIRE SO IT WILL NOT STICK OUT OF THE HOOD.
  6. PLACE CABLE CLAMP OVER CABLE. USING SCREWS PROVIDED, TIGHTEN CABLE CLAMP. CABLE CLAMP MAY BE INSTALLED UP SIDE DOWN FOR SMALLER CABLES.
  7. PLACE CONNECTOR INTO THE BOTTOM HALF OF HOOD.
  8. PLACE THE OTHER HALVE OF THE HOOD ON TOP OF THE FIRST HALF, MAKING SURE NO WIRES ARE PINCHED
  8. TIGHTEN THE TWO HALVES TOGETHER WITH THE SCREWS PROVIDED



## PLASTIC

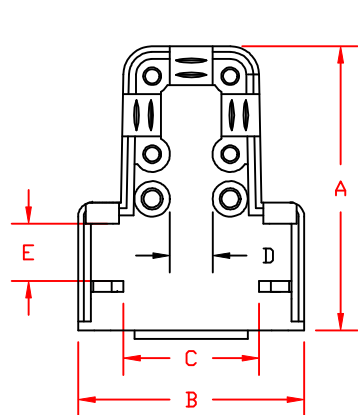
THESE DRAWINGS AND SPECIFICATIONS ARE THE PROPERTY OF MH CONNECTORS LTD. AND SHALL NOT BE REPRODUCED, COPIED OR USED AS THE BASIS FOR THE MANUFACTURE OR SALE OF APPARATUS WITHOUT WRITTEN PERMISSION.

DRAWN	DATE
P. JENKINS	03-23-12
APPROVED	DATE
D. CROFT	03-23-12

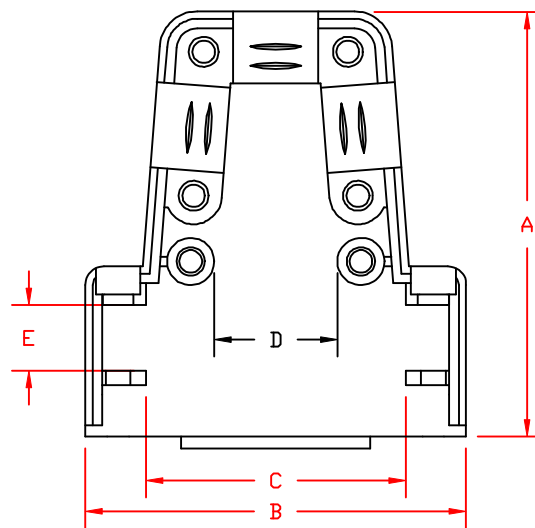


**MH CONNECTORS LTD.**

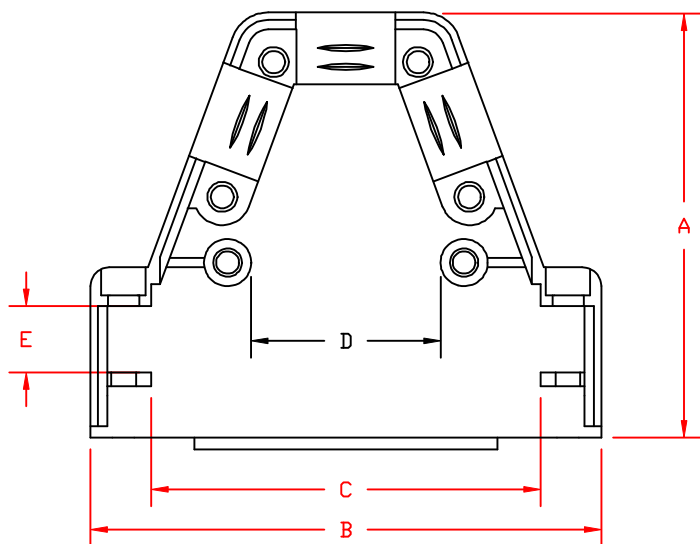
SCALE	SHEET	OF	REV:
NTS	1	OF 1	A
DRAWING No			
MHTRI-P ASSEMBLY			



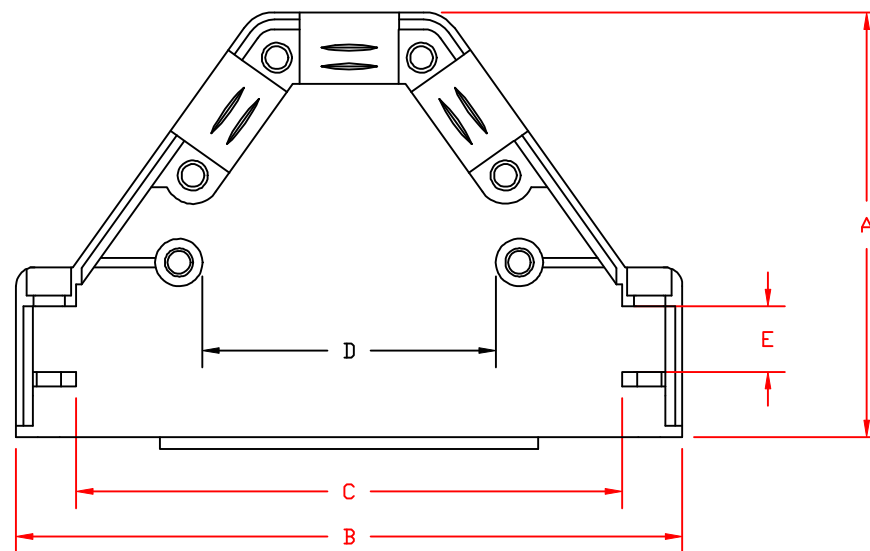
9-PIN



15-PIN



25-PIN



37-PIN

DIMENSIONS (mm)				
	9	15	25	37
A	39.97	44.98	44.98	44.98
B	31.90	40.28	54.00	70.48
C	19.25	28.34	41.98	58.01
D	6.01	13.00	19.98	31.11
E	7.21	7.21	7.21	7.21

**NOTE:**

THESE DIMENSIONS ARE GOOD FOR THE  
PLASTIC AND METALIZED PLASTIC  
BACK SHELLS

**PLASTIC**

THESE DRAWINGS AND SPECIFICATIONS ARE THE  
PROPERTY OF MH CONNECTORS LTD. AND SHALL NOT  
BE REPRODUCED, COPIED OR USED AS THE BASIS FOR  
THE MANUFACTURE OR SALE OF APPARATUS WITHOUT  
WRITTEN PERMISSION.

DRAWN P. JENKINS		DATE 03-23-12	
APPROVED D. CROFT		DATE 03-23-12	
SCALE NTS	SHEET 1	OF 1	REV: A
DRAWING No MHTRI-P INTERNAL			

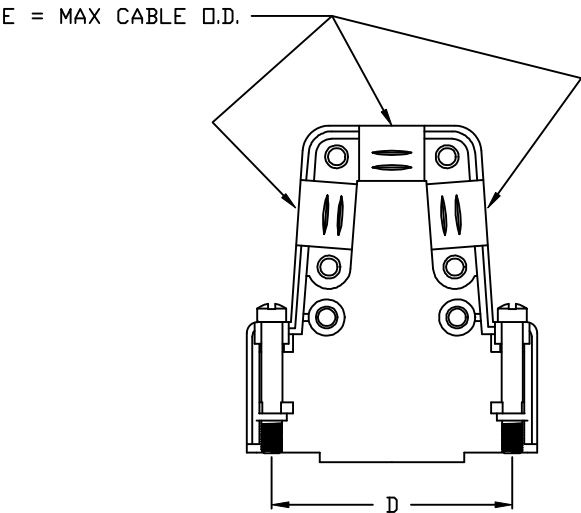
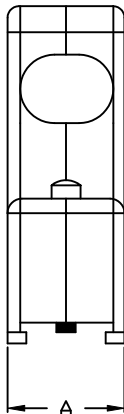
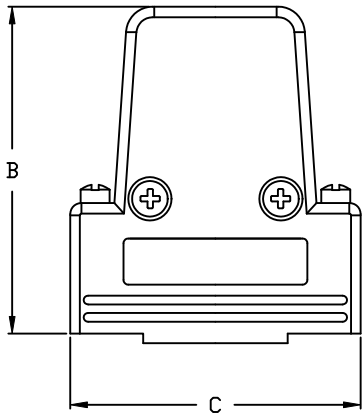


**MH CONNECTORS LTD.**

BACKSHELL KIT INCLUDES:

- (2) BACKSHELL HAVLES
- (2) 4-40 JACKSCREWS
- (2) HOUSING SCREWS (self-tapping)
- (2) STRAIN RELIEF CLAMP
- (4) STRAIN RELIEF SCREWS (self-tapping)
- (2) CABLE SLOT SHUT-OFFS

DIMENSIONS (mm/in)					
SIZE	A $\pm \begin{smallmatrix} .38 \\ .015 \end{smallmatrix}$	B $\pm \begin{smallmatrix} .25 \\ .010 \end{smallmatrix}$	C $\pm \begin{smallmatrix} .38 \\ .015 \end{smallmatrix}$	D $\pm \begin{smallmatrix} .38 \\ .015 \end{smallmatrix}$	E
9	15.00	45.20	31.00	24.99	5.84
	0.590	1.780	1.220	0.984	0.230
15	15.00	45.20	40.30	33.32	8.63
	0.590	1.780	1.587	1.312	0.340
25	15.00	45.20	53.50	47.04	10.16
	0.590	1.780	2.106	1.852	0.400
37	15.00	45.20	70.00	63.50	10.54
	0.590	1.780	2.756	2.500	0.415



MATERIAL:

BACKSHELL PLASTIC: ABS - BLACK - UL RECOGNIZED  
4-40 JACKSCREWS: STEEL- BLACK OXIDE  
HOUSING SCREWS: STEEL - BLACK OXIDE  
STRAIN RELIEF CLAMP: STEEL - Zn PLATED  
STRAIN RELIEF SCREWS: STEEL - Zn PLATED  
CABLE SLOT SHUTOFFS: ABS - BLACK - UL RECOGNIZED  
OPERATING TEMP: -55°C TO +110°C

ORDERING INFORMATON:

SIZE	P/N KITTED:	PRODUCT CODE:
9-WAY	6550-0101-01	MHTRI-P-09-K
15-WAY	6550-0101-02	MHTRI-P-15-K
25-WAY	6550-0101-03	MHTRI-P-25-K
37-WAY	6550-0101-04	MHTRI-P-37-K

THESE DRAWINGS AND SPECIFICATIONS ARE THE PROPERTY OF MH CONNECTORS LTD. AND SHALL NOT BE REPRODUCED, COPIED OR USED AS THE BASIS FOR THE MANUFACTURE OR SALE OF APPARATUS WITHOUT WRITTEN PERMISSION.

DRAWN P. JENKINS		DATE 03-14-12	
APPROVED D. CROFT		DATE 03-14-12	
SCALE NTS	SHEET 1	OF 1	REV: A
DRAWING No MHTRI-P SERIES			

RoHS COMPLIANT



MH CONNECTORS LTD.