

SELF-TAPPING MATING SCREW

TOP COVER

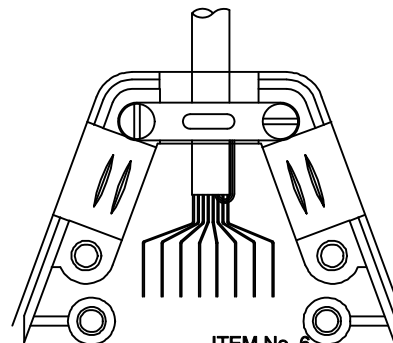
JACKSCREW

BOTTOM HOUSING

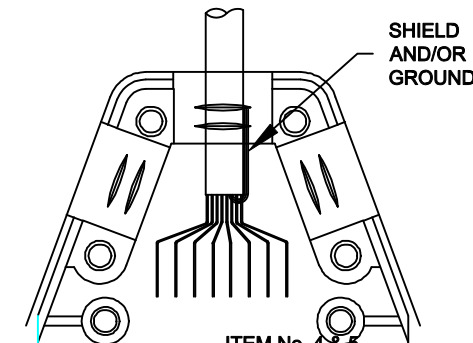
SELF-TAPPING STRAIN RELIEF SCREW

STRAIN RELIEF

BLANKING PLUG



ITEM No. 6



ITEM No. 4 & 5

ASSEMBLY INSTRUCTIONS:

1. PREPARE CABLE ENDS, CONNECT TO CONNECTOR.
2. IF THE JACKSCREWS ARE NOT IN PLACE, SNAP THEM INTO THE BACKSHELL.
3. SELECT THE CABLE ENTRY PORT NEEDED, PLACE THE SLOT BLOCKING TABS IN THE OTHER TWO POSITIONS MAKING SURE THEY ARE FULLY SEATED.
4. PLACE CABLE IN SELECTED STRAIN RELIEF RECESS AREA MAKING SURE CABLE JACKET IS BELOW STRAIN RELIEF. ENSURE THE CABLE IS PRESSED INTO THE STRAIN RELIEF RECESS AREA.
5. IF CABLE IS SHIELDED, FOLD SHIELD AND/OR GROUND WIRE BACK OVER THE CLAMP AREA. CUT ANY EXCESS WIRE SO IT WILL NOT STICK OUT OF THE HOOD.
6. PLACE CABLE CLAMP OVER CABLE. USING SCREWS PROVIDED, TIGHTEN CABLE CLAMP. CABLE CLAMP MAY BE INSTALLED UP SIDE DOWN FOR SMALLER CABLES.
7. PLACE CONNECTOR INTO THE BOTTOM HALF OF HOOD.
8. PLACE THE OTHER HALF OF THE HOOD ON TOP OF THE FIRST HALF, MAKING SURE NO WIRES ARE PINCHED
8. TIGHTEN THE TWO HALVES TOGETHER WITH THE SCREWS PROVIDED

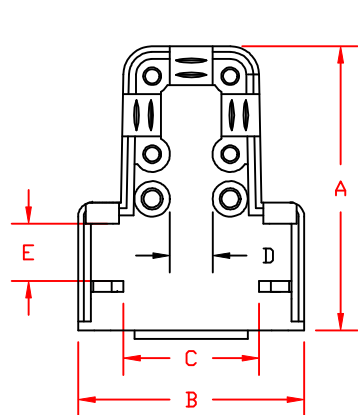
METALIZED PLASTIC

THESE DRAWINGS AND SPECIFICATIONS ARE THE PROPERTY OF MH CONNECTORS LTD. AND SHALL NOT BE REPRODUCED, COPIED OR USED AS THE BASIS FOR THE MANUFACTURE OR SALE OF APPARATUS WITHOUT WRITTEN PERMISSION.

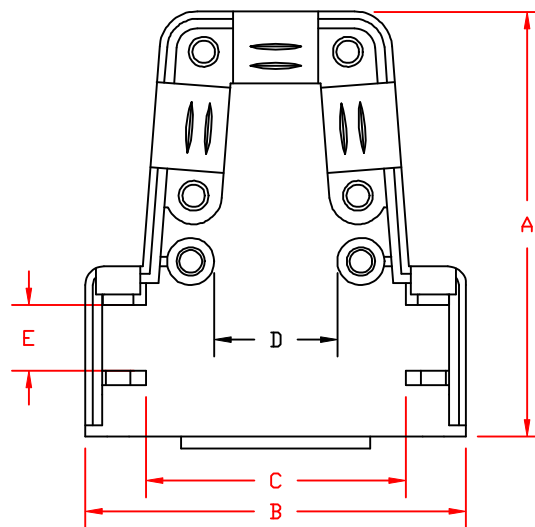
DRAWN P. JENKINS		DATE 03-23-12	
APPROVED D. CROFT		DATE 03-23-12	
SCALE NTS	SHEET 1	OF 1	REV: A
DRAWING No MHTRI-M ASSEMBLY			



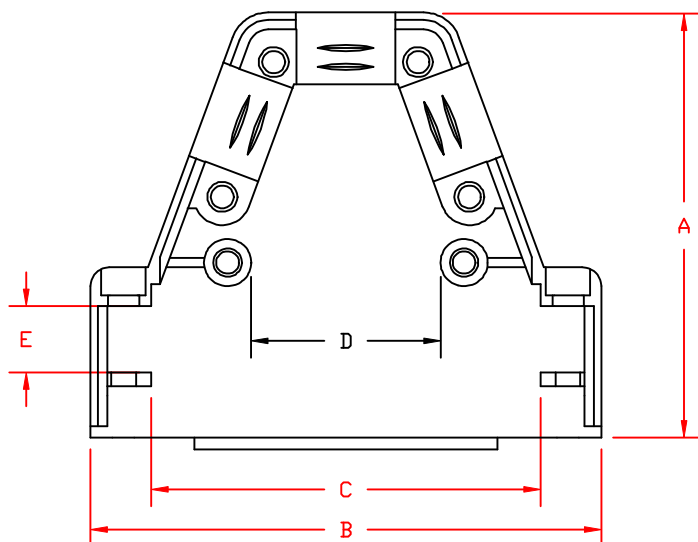
MH CONNECTORS LTD.



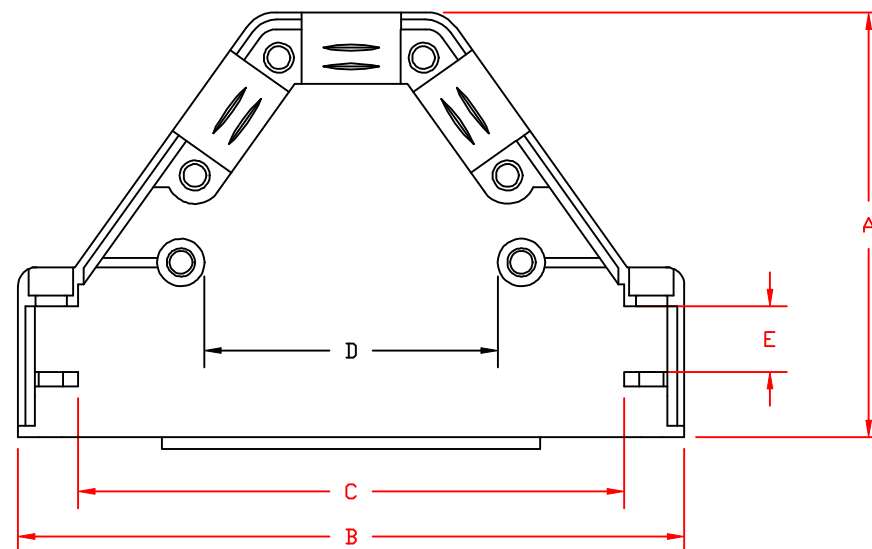
9-PIN



15-PIN



25-PIN



37-PIN

DIMENSIONS (mm.)				
	9	15	25	37
A	39.97	44.98	44.98	44.98
B	31.90	40.28	54.00	70.48
C	19.25	28.34	41.98	58.01
D	6.01	13.00	19.98	31.11
E	7.21	7.21	7.21	7.21

NOTE:

THESE DIMENSIONS ARE GOOD FOR THE
PLASTIC AND METALIZED PLASTIC
BACK SHELLS

METALIZED PLASTIC

THESE DRAWINGS AND SPECIFICATIONS ARE THE
PROPERTY OF MH CONNECTORS LTD. AND SHALL NOT
BE REPRODUCED, COPIED OR USED AS THE BASIS FOR
THE MANUFACTURE OR SALE OF APPARATUS WITHOUT
WRITTEN PERMISSION.

DRAWN P. JENKINS	DATE 03-23-12
----------------------------	-------------------------

APPROVED D. CROFT	DATE 03-23-12
-----------------------------	-------------------------

SCALE NTS	SHEET 1	OF 1	REV: A
---------------------	-------------------	----------------	------------------

DRAWING No
MHTRI-M INTERNAL

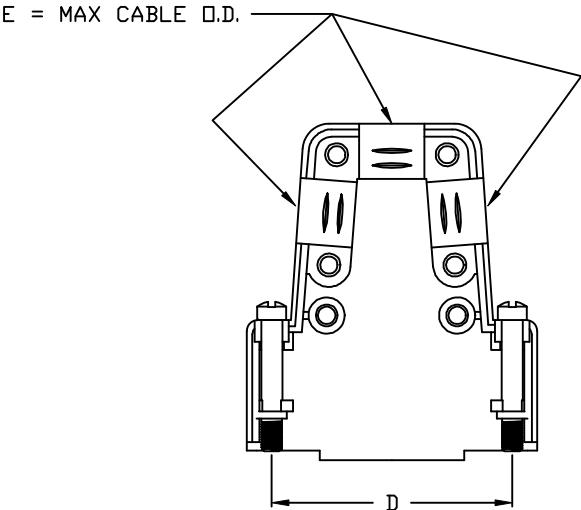
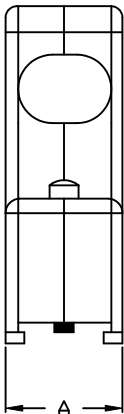
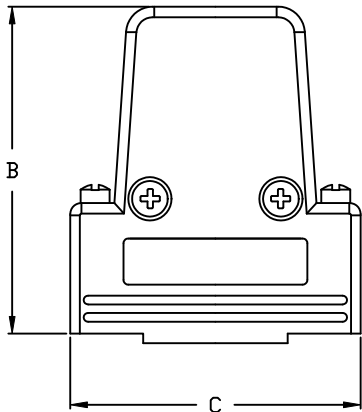


MH CONNECTORS LTD.

BACKSHELL KIT INCLUDES:

- (2) BACKSHELL HAVLES
- (2) 4-40 JACKSCREWS
- (2) HOUSING SCREWS (self-tapping)
- (2) STRAIN RELIEF CLAMP
- (4) STRAIN RELIEF SCREWS (self-tapping)
- (2) CABLE SLOT SHUT-OFFS

DIMENSIONS (mm/in)					
SIZE	A $\pm \begin{smallmatrix} .38 \\ .015 \end{smallmatrix}$	B $\pm \begin{smallmatrix} .25 \\ .010 \end{smallmatrix}$	C $\pm \begin{smallmatrix} .38 \\ .015 \end{smallmatrix}$	D $\pm \begin{smallmatrix} .38 \\ .015 \end{smallmatrix}$	E
9	15.00	45.20	31.00	24.99	5.84
	0.590	1.780	1.220	0.984	0.230
15	15.00	45.20	40.30	33.32	8.63
	0.590	1.780	1.587	1.312	0.340
25	15.00	45.20	53.50	47.04	10.16
	0.590	1.780	2.106	1.852	0.400
37	15.00	45.20	70.00	63.50	10.54
	0.590	1.780	2.756	2.500	0.415



MATERIAL:

BACKSHELL PLASTIC: ABS - UL RECOGNIZED
PLATING: NICKEL
4-40 JACKSCREWS: STEEL- STEEL - Zn PLATED
HOUSING SCREWS: STEEL - STEEL - Zn PLATED
STRAIN RELIEF CLAMP: STEEL - Zn PLATED
STRAIN RELIEF SCREWS: STEEL - Zn PLATED
CABLE SLOT SHUTOFFS: ABS - UL RECOGNIZED - NICKEL PLATED
OPERATING TEMP: -55°C TO +110°C

ORDERING INFORMATON:

SIZE	P/N KITTED:	PRODUCT CODE:
9-WAY	6550-0100-01	MHTRI-M-09-K
15-WAY	6550-0100-02	MHTRI-M-15-K
25-WAY	6550-0100-03	MHTRI-M-25-K
37-WAY	6550-0100-04	MHTRI-M-37-K

THESE DRAWINGS AND SPECIFICATIONS ARE THE PROPERTY OF MH CONNECTORS LTD. AND SHALL NOT BE REPRODUCED, COPIED OR USED AS THE BASIS FOR THE MANUFACTURE OR SALE OF APPARATUS WITHOUT WRITTEN PERMISSION.

DRAWN P. JENKINS		DATE 03-14-12	
APPROVED D. CROFT		DATE 03-14-12	
SCALE NTS	SHEET 1	OF 1	REV: A
DRAWING No MHTRI-M SERIES			

RoHS COMPLIANT



MH CONNECTORS LTD.