

ASSEMBLY INSTRUCTIONS:

1. PREPARE CABLE AS REQUIRED TO ASSEMBLE TO THE CONNECTOR
2. CHOOSE THE STRAIN RELIEF HALVES THAT MOST CLOSELY MATCH THE CABLE DIAMETER. THEY DO NOT NEED TO BE MATCHING HALVES.
3. IF USING SHIELD WIRE - PLACE THE SHIELD WIRE THROUGH THE HOLE IN ONE SIDE OF STRAIN RELIEF HALF (FIG.1). APPLY THE OTHER STRAIN RELIEF HALF ON TOP OF CABLE JACKET AND WRAP THE SHIELD WIRE AROUND BOTH STRAIN RELIEF HALVES AS SHOWN IN FIG.2
4. IF USING BRAID SHIELD - PIGTAIL THE SHIELD AND POSITION IN IN STRAIN RELIEF AS SHOWN IN FIG. 3. TRIM EXCESS BRAID.
5. PLACE THE STRAIN RELIEF/SHIELD SUPPORT INTO THE APPROPRIATE RECESS IN ONE HALF OF THE HOOD CAPTURING THE SHIELD BETWEEN THE STRAIN RELIEF AND THE BOTTOM HALF OF THE HOOD (FIG.4).
6. SNAP THE JACKSCREWS INTO POSITION AND POSITION CONNECTOR INTO THE BOTTOM HOOD HALF.
7. PLACE THE OTHER HALF OF THE HOOD INTO PLACE AND TIGHTEN TOGETHER WITH THE ASSEMBLY SCREWS.

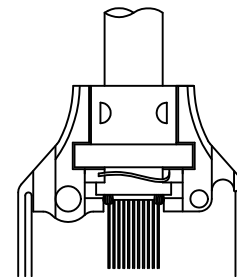
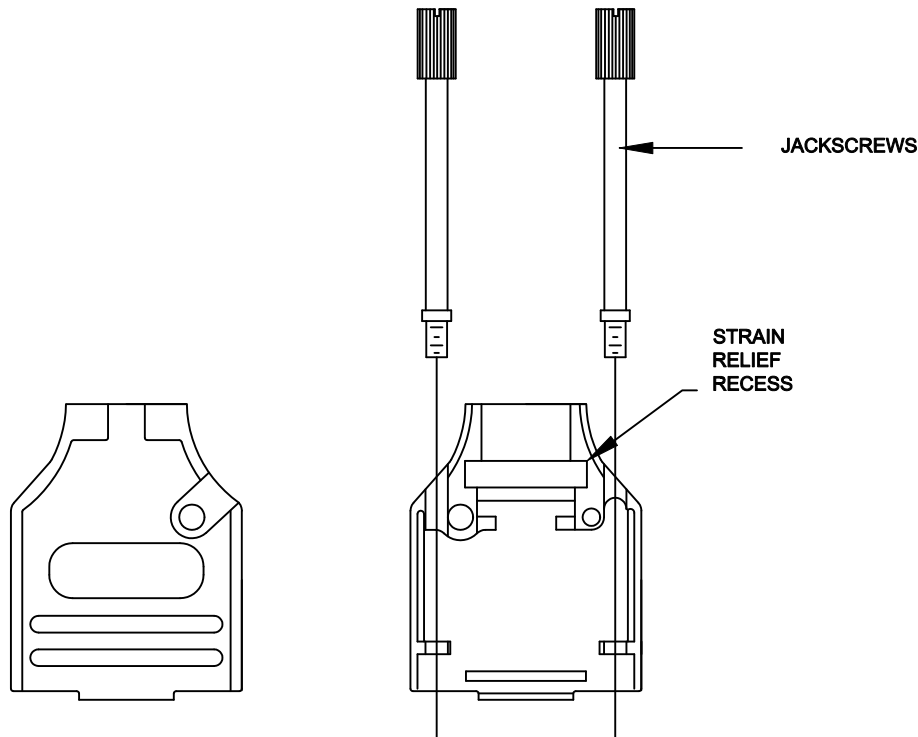


FIG. 4

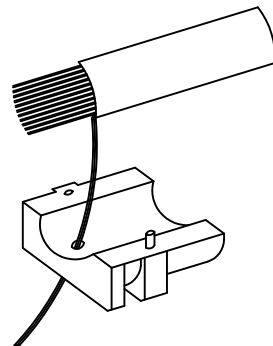


FIG. 1

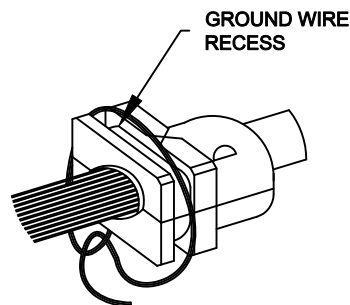


FIG. 2

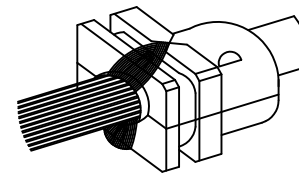


FIG. 3

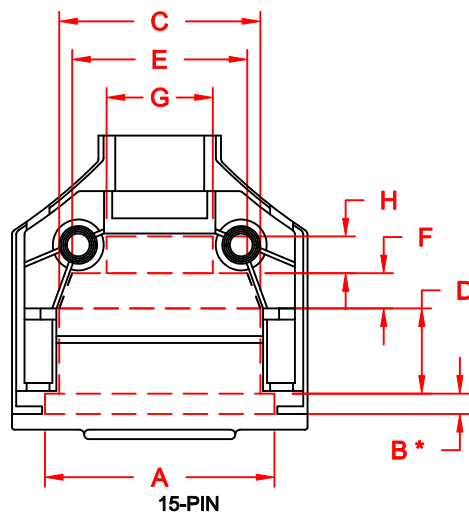
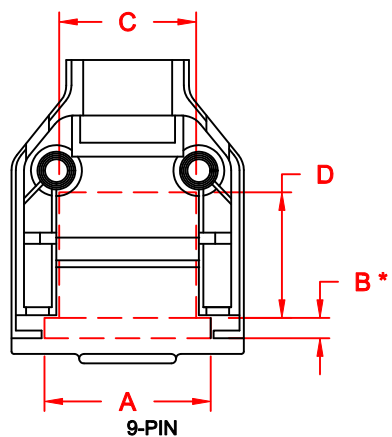
METALIZED PLASTIC

THESE DRAWINGS AND SPECIFICATIONS ARE THE PROPERTY OF MH CONNECTORS LTD. AND SHALL NOT BE REPRODUCED, COPIED OR USED AS THE BASIS FOR THE MANUFACTURE OR SALE OF APPARATUS WITHOUT WRITTEN PERMISSION.

DRAWN P. JENKINS		DATE 03-23-12	
APPROVED D. CROFT		DATE 03-23-12	
SCALE NTS	SHEET 1	OF 1	REV: A
DRAWING No MHDPK ASSEMBLY			



MH CONNECTORS LTD.



SEE NOTE 1. →

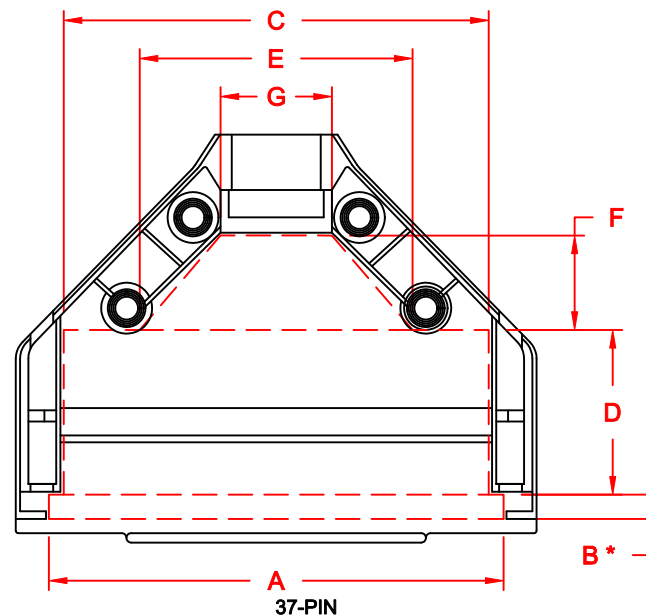
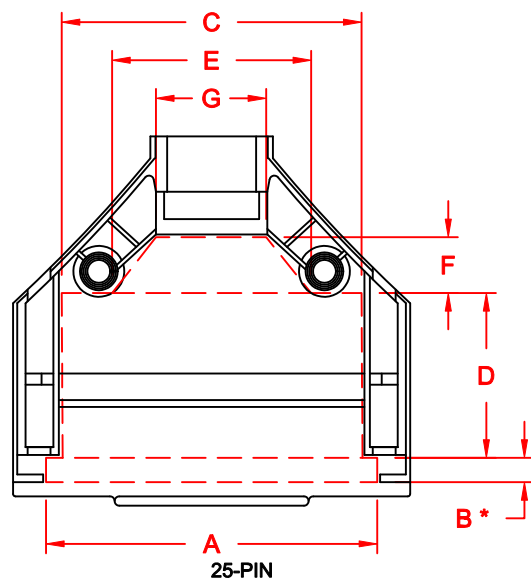
SEE NOTE 2. →

DIMENSIONS (mm)

	9	15	25	37
A	22.17	30.60	44.17	60.65
B *	2.69	2.69	3.25	3.25
C	18.26	26.82	40.00	56.69
D	16.76	11.37	21.97	21.97
E		23.34	26.56	36.39
F		4.69	7.44	12.59
G		14.17	14.70	14.83
H		4.92		
PCB	8.94	9.09	9.11	9.34

NOTE:

1. "B" DIMENSION MEASURED FROM BACK SIDE OF CONNECTOR FLANGE
2. MIN. SAFE SPACING BETWEEN BACK SHELLS FOR PCB AND MOUNTED COMPONENTS
3. THESE DIMENSIONS ARE GOOD FOR THE PLASTIC AND METALIZED PLASTIC BACK SHELLS



METALIZED PLASTIC

THESE DRAWINGS AND SPECIFICATIONS ARE THE PROPERTY OF MH CONNECTORS LTD. AND SHALL NOT BE REPRODUCED, COPIED OR USED AS THE BASIS FOR THE MANUFACTURE OR SALE OF APPARATUS WITHOUT WRITTEN PERMISSION.

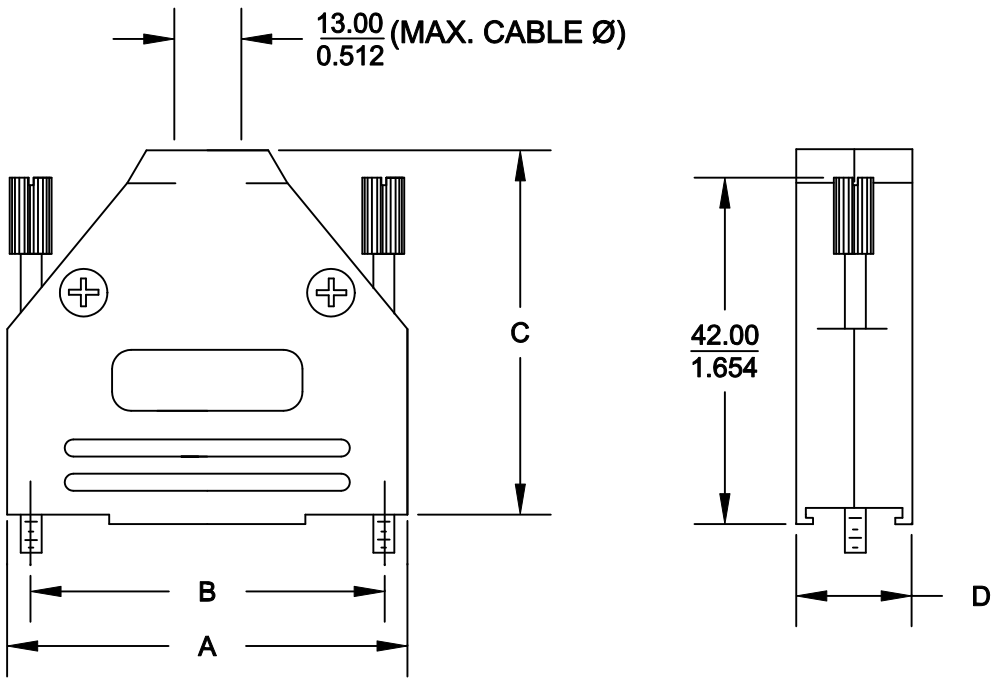
DRAWN P. JENKINS	DATE 03-23-12
APPROVED D. CROFT	DATE 03-23-12
SCALE NTS	SHEET OF 1 OF 1
DRAWING No MHDTPK ASSEMBLY	REV: A



MH CONNECTORS LTD.

- BACKSHELL KIT INCLUDES:
- (2) BACKSHELL HALVES
 - (2) 4-40 THUMBSCREWS
 - (2) HOUSING SCREWS/NUTS
 - (1) SET OF COMPRESSION INSERTS-VARIOUS SIZES
- DIAMETERS: 4mm (.157"), .5mm (.197"), 7mm (.276"), 9mm (.354")

DIMENSIONS (mm/in)				
SIZE	A $\begin{smallmatrix} \pm .25 \\ \pm .010 \end{smallmatrix}$	B $\begin{smallmatrix} \pm .13 \\ \pm .005 \end{smallmatrix}$	C $\begin{smallmatrix} \pm .25 \\ \pm .010 \end{smallmatrix}$	D $\begin{smallmatrix} \pm .25 \\ \pm .010 \end{smallmatrix}$
9	31.20	24.99	39.90	15.00
	1.228	0.984	1.571	0.590
15	39.50	33.32	41.50	15.00
	1.555	1.312	1.634	0.590
25	53.40	47.04	48.60	15.00
	2.102	1.852	1.913	0.590
37	69.70	63.50	53.60	15.00
	2.744	2.500	2.110	0.590



ORDERING INFORMATION:

SIZE:	P/N - KITTED:	PRODUCT CODE:
9-WAY	6560-0145-01	MHDTPK-9-K
15-WAY	6560-0145-02	MHDTPK-15-K
25-WAY	6560-0145-03	MHDTPK-25-K
37-WAY	6560-0145-04	MHDTPK-37--K

SIZE:	P/N - BULK:	PRODUCT CODE:
9-WAY	6561-0145-01	MHDTPK-9
15-WAY	6561-0145-02	MHDTPK-15
25-WAY	6561-0145-03	MHDTPK-25
37-WAY	6561-0145-04	MHDTPK-37

PLASTIC: ABS POLYLAC - UL RECOGNIZED
NICKEL PLATED
JACKSCREWS: STEEL, Zn PLATED
M3 HOODSCREWS: STEEL, Zn PLATED
COMPRESSION INSERT: ABS UL RECOGNIZED
M3 NUT: STEEL, Zn PLATED
OPERATING TEMP: - 55°C TO 110°C

RoHS COMPLIANT



MH CONNECTORS LTD.

THESE DRAWINGS AND SPECIFICATIONS ARE THE PROPERTY OF MH CONNECTORS LTD. AND SHALL NOT BE REPRODUCED, COPIED OR USED AS THE BASIS FOR THE MANUFACTURE OR SALE OF APPARATUS WITHOUT WRITTEN PERMISSION.

DRAWN		DATE	
P. JENKINS		03-14-12	
APPROVED		DATE	
D. CROFT		03-14-12	
SCALE	SHEET	OF	REV:
NTS	1	1	A
DRAWING No			
MHDTPK SERIES			