



Simplify light-fixture installations and achieve industry-leading thermal, electric and optic performance with reliable, solderless LED Array Holders

Chip-On-Board (COB) LED Array Holders simplify the LED installation process by eliminating the need for labor-intensive hand soldering. Risk of LED CoB damage is minimized by the reduction in handling.

The holders allow customers to install LED arrays quickly into fixtures, enable field replacements and facilitate upgrades to existing applications. COB LED array holders facilitate overall light-system cost reductions with a simple installation process and superior performance.

Molex provides reliable, easy-to-install holders for CREE XLamp arrays.

Features and Benefits

Inspired by Zhaga Book 3 standards (round version only)	Promotes standardization with existing LED eco-system; allows manufacturers to upgrade without re-designing their products
LED CoB pre-hold feature	Minimizes installation time by allowing LED array to be secured to the holder prior to final assembly
Three-latch bayonet-style reflector attachment (180810 Series Only)	Provides secure attachment to existing Fortimo™ type reflectors; easy alignment and locking features
Flat surface with integrated bevel surrounding the Light Emitting Source (LES)	Allows for easy connection of secondary optics without interrupting light output. Offers a clean and finished appearance
Single-ended wire-trap terminal (180810 Series); Double-ended wire-trap terminal (180720, 180560 Series)	Provides design flexibility by allowing single- or serially-wired LED configurations
Robust housing and compression contacts	Provides stable mechanical, electrical and thermal connections in LED systems. Reduces installation time and quality concerns
Screw-mount attachment method for securing array to heat sink	Simple attachment reduces fixture manufacturing time
4.10mm low-profile design	Compact height fits many applications
Releasable wire trap for rework or replacement	Allows for field serviceability and upgrade
Highly-reflective white thermoplastic housing	Promotes light output; provides mechanical stability in high-temperature environments

LED Array Holders for CREE* XLamp Arrays

New Series

180810 CXA2520, CXA2530 and CXA2540 Arrays, Round Version with Bayonet Attachment

Previously Released

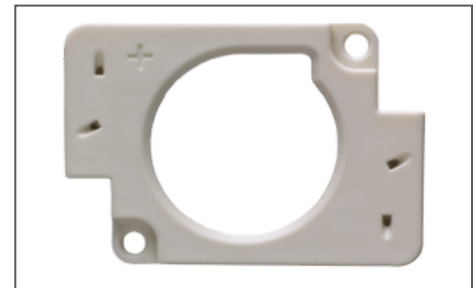
180720 CXA2520, CXA2530 and CXA2540

Arrays, Rectangular Version

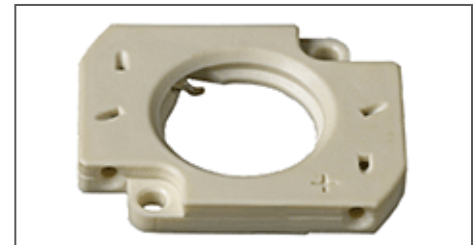
180560 CXA1507 and CXA1512 Arrays



LED Array Holder for CREE* XLamp CXA2520, CXA2530 and CXA2540 (Series 180810) Round Version



LED Array Holder for CREE* XLamp CXA2520, CXA2530 and CXA2540 (Series 180720) Rectangular Version



LED Array Holder for CREE* XLamp CXA1507 and CXA1512 (Series 180560) Rectangular Version

*† CREE and XLamp are registered trademarks of Cree, Inc.



LED Array Holders for CREE* XLamp† Arrays

Specifications

Reference Information

Packaging: Tray
UL File No.: E345583
CSA File No.: E345583
Designed In: Millimeters
RoHS: Yes
REACH SVHC: Contains SVHC: No

Electrical

Voltage (max.): 600V DC
Current : 2.5A continuous; 3.5A max.
Contact Resistance: 20 milliohms max.
Dielectric Withstanding Voltage:
300V DC
Insulation Resistance:
5000 Megohms min.

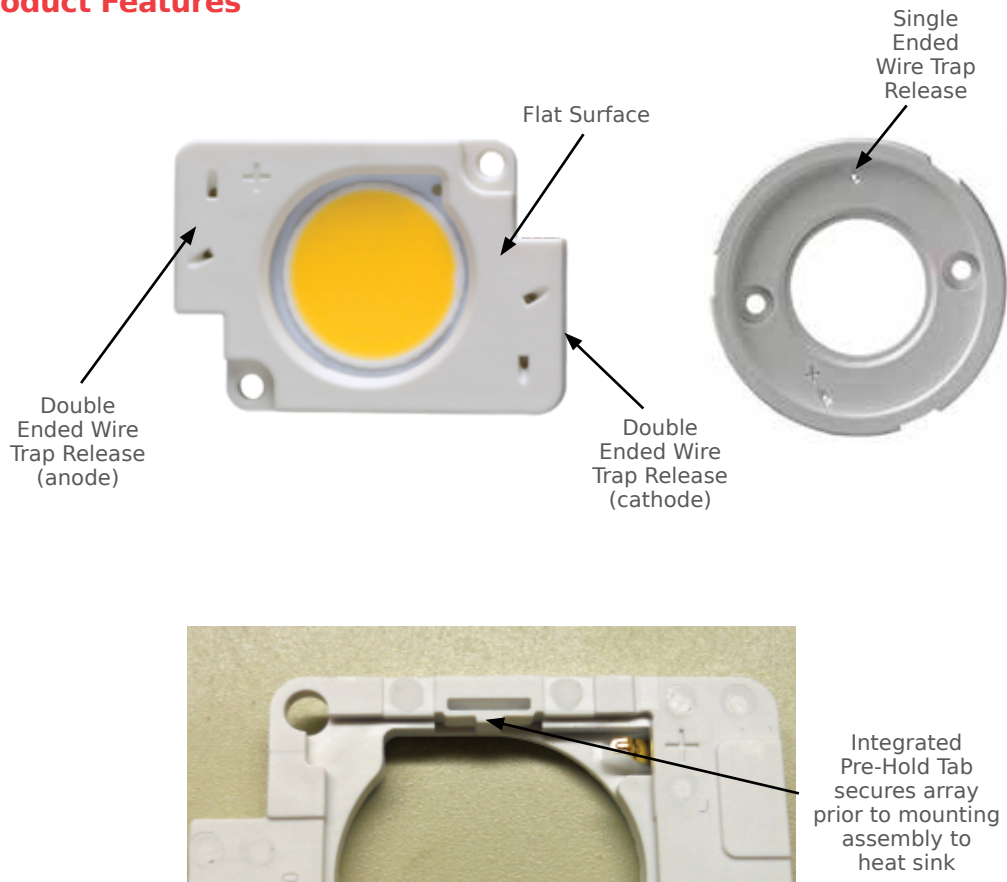
Mechanical

Wire Insertion Force: 5N max.
Wire Pull Out Force: 30N max.
Durability (min.): 5 Cycles

Physical

Housing:
CXA15/CXA25 – White PBT 30%
Glass fill UL94V-0
Contact:
Copper Alloy(Cu), Nickel (Ni) and
Gold (Au)
Plating:
Contact Area — Gold (Au)
Underplating — Nickel (Ni)

Additional Product Features



Applications

All general illumination applications

- Downlighting
- Track
- Pendants
- Linear

Areal Lighting

- Roadways
- Parking Lots
- Wall Packs

Target Accounts/Customers (non-exclusive list)

- All lighting OEMs are potential customers
- Cooper
- Juno
- ENDO

Target Customer Job Functions

- Engineering
- OEM

LED Array Holders for CREE* XLamp† Arrays



Recessed downlighting in residential and commercial buildings

Ordering Information

Order No.	Array	Version	‡Integrated Pre-Hold Tab	Installation	Clear Cover	Wire Attach Method
180560-0001	CXA1507 and CXA1512	Rectangular	No	(2) M2.5 Screw Mounting	No	Poke-In Releasable Wire Trap
180720-0001	CXA2520, CXA2530 and CXA2540		Yes			
180720-0002		Round				
180810-0001						

‡Note: Integrated pre-hold tab can be available for any version; contact Molex for additional information

* † CREE and XLamp are registered trademarks of Cree, Inc.