

## RCA AUDIO CONNECTORS (Cont.)

### RCA EPITOME®-PRO + AUDIO CONNECTORS (BEST)

Epitome® Pro Plus Connectors Like the Epitome® and Epitome® Pro RCA Connectors have all metal shells for EMI/RFI protection and are Gold Plated for corrosion resistance and low electrical resistance and are soldered\*\* to the wire. The GC Electronics Epitome® Pro Plus like the Epitome® Pro Connectors also have a split center contact that spreads the center contact apart for better connector to connector connection. The Epitome® Pro Plus connectors also have a twist lock\* mechanism that locks the male plug to the female connector. Note: \*\* (compatible leaded and some Lead Free Solders for RoHS compliance)



Fig.1



Fig.2



Fig.3



Fig.4

### RCA Epitome®-Pro + Audio Connectors (Best)

Retail Part No.	Bulk Part No.	Figure No.	Band Type	Outer Diameter Wire Size
65-645-2-XX	65-645-2-XX-BU	1	2	2.8mm
65-645-4-XX	65-645-4-XX-BU	1	2	4mm
65-645-6-XX	65-645-6-XX-BU	1	2	6mm
65-645-8-XX	65-645-8-XX-BU	1	2	8mm
65-646-2-XX	65-646-2-XX-BU	2	1	2.8mm
65-646-4-XX	65-646-4-XX-BU	2	1	4mm
65-646-6-XX	65-646-6-XX-BU	2	1	6mm
65-646-8-XX	65-646-8-XX-BU	2	1	8mm

### RCA Epitome®-Pro + Audio Connectors (Best) (Cont.)

Retail Part No.	Bulk Part No.	Figure No.	Band Type	Outer Diameter Wire Size
65-647-2-XX	65-647-2-XX-BU	3	1	2.8mm
65-647-4-XX	65-647-4-XX-BU	3	1	4mm
65-647-6-XX	65-647-6-XX-BU	3	1	6mm
65-647-8-XX	65-647-8-XX-BU	3	1	8mm
65-648-2-XX	65-648-2-XX-BU	4	1	2.8mm
65-648-4-XX	65-648-4-XX-BU	4	1	4mm
65-648-6-XX	65-648-6-XX-BU	4	1	6mm
65-648-8-XX	65-648-8-XX-BU	4	1	8mm

Notes: XX= without Color Band; for Colored Band Order, Replace "XX" with "BK" (Black), "BL" (Blue), "GN" (Green), "RD" (Red), "WH" (White), "YL" (Yellow), "VL" (Violet) (Example = 65-232-2-RD) \* =65-645 Does Not Have Twist Lock Feature

### RCA COLOR BANDS

GC Electronics offer a wide array of color bands for to fit GC Electronic RCA plugs. The color Bands allow the custom cable builder to build a custom cable using the correct color for each connection. The Type1 Bands are thin for that minimalist look while the Type2 bands are wide to aid in handling of the cables.



Fig.5



Fig.6



Fig.7



Fig.8



Fig.9



Fig.10



Fig.11



Fig.12



Fig.13



Fig.14



Fig.15



Fig.16

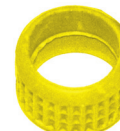


Fig.17



Fig.18

### RCA Plug Color Bands–Type 1

Retail Part No.	Bulk Part No.	Fig. No.	Description	Band Color
65-630-BK	65-630-BK-BU	5	Color Bands Type 1–Black	Black
65-630-BL	65-630-BL-BU	6	Color Bands Type 1–Blue	Blue
65-630-GN	65-630-GN-BU	7	Color Bands Type 1–Green	Green
65-630-RD	65-630-RD-BU	8	Color Bands Type 1–Red	Red
65-630-WH	65-630-WH-BU	9	Color Bands Type 1–White	White
65-630-YL	65-630-YL-BU	10	Color Bands Type 1–Yellow	Yellow
65-630-VL	65-630-VL-BU	11	Color Bands Type 1–Violet	Violet

### RCA Plug Color Bands–Type 2

Retail Part No.	Bulk Part No.	Fig. No.	Description	Band Color
65-631-BK	65-631-BK-BU	12	Color Bands Type 2–Black	Black
65-631-BL	65-631-BL-BU	13	Color Bands Type 2–Blue	Blue
65-631-GN	65-631-GN-BU	14	Color Bands Type 2–Green	Green
65-631-RD	65-631-RD-BU	15	Color Bands Type 2–Red	Red
65-631-WH	65-631-WH-BU	16	Color Bands Type 2– White	White
65-631-YL	65-631-YL-BU	17	Color Bands Type 2–Yellow	Yellow
65-631-VL	65-631-VL-BU	18	Color Bands Type 2–Violet	Violet