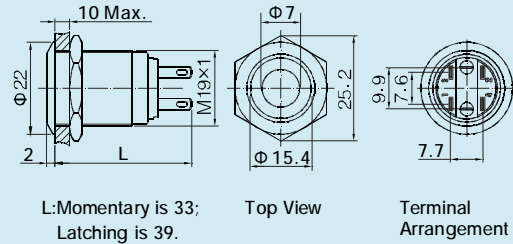


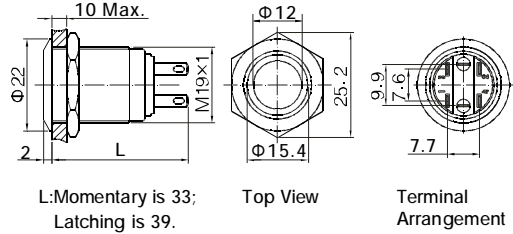
RJS101-19L



Φ19mm diameter  
 Switch Rating: 5A/250VAC  
 Contact Configuration: 1NO1NC  
 Operation Type: Momentary  
 The Front Shape: Flat Head  
 The Surface Material: BS/SS/B/BLK  
 IP Degree: IP65 (IP67 Made To Order)



Φ19mm diameter  
 Switch Rating: 5A/250VAC  
 Contact Configuration: 1NO1NC  
 Operation Type: Momentary  
 The Front Shape: Flat Head  
 The Surface Material: BS/SS/B/BLK  
 IP Degree: IP65 (IP67 Made To Order)



**RJS101-19L-F-(R/D)-(R/G/Y/O/B/W)-(BS/SS/B/BLK)-(6V/12V/24V/110V/220V)-(IP65/IP67)**

RJS101 = Single Pole Type 1 Series

19 = Diameter (in mm)

L = (Illuminated)

R/D = Ring Illumination / Dot Illumination

R/G/Y/O/B/W = R G Y O B W

BS/SS/B/BLK = Brushed Steel / Shiny Steel / Brass / Black (Surface Finish)

6V/12V/24V/110V/220V = LED Rated Voltage

IP65 / IP67 = IP Degree, IP 65 Standard / IP 67 made to Order

Specification	RJS101-19L-F-D-X-X-V-IP65	RJS101-19L-F-R-X-X-V-IP65
The Front Shape	Flat Head	Flat Head
Terminal Type	Pin Terminal (2.8x0.5mm)	Pin Terminal (2.8x0.5mm)
Switching	No.2	No.2
Max. Switch Rating	Ith:5A Ui:250VAC	Ith:5A Ui:250VAC
Contact Resistance	≤50mΩ	≤50mΩ
Insulation Resistance	≥1000MΩ	≥1000MΩ
Dielectric Intensity	2000VAC	2000VAC
Operating Temp	-20°C ~ +55°C	-20°C ~ +55°C
Mechanical Life	1,000,000cycles	1,000,000cycles
Electrical Life	50,000cycles	50,000cycles
Panel Thickness	1~10mm	1~10mm
Torque	5~14Nm	5~14Nm
Operation Pressure	About 4N	About 4N
Operation Distance	About 2.5mm	About 2.5mm
IP Degree	IP65 (IP67 Made To Order)	IP65 (IP67 Made To Order)
Material	Contact	Silver Alloy
	Button	BS/SS/B/BLK
	Body	BS/SS/B/BLK
	Base	PC
	ROHS	Made to order
LED SPEC	Type	Dot Illuminated (LED)
	Colour	<span style="color:red">R</span> <span style="color:green">G</span> <span style="color:yellow">Y</span> <span style="color:orange">O</span> <span style="color:blue">B</span> <span style="border:1px solid black; padding:0 2px;">W</span>
	Rated Voltage	6V/12V/24V/110V/220V
	Life	40,000 hours