

19" CABINETS

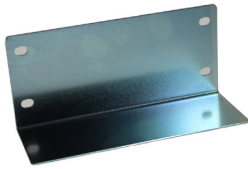
Attachment Set



- Nickel-plated M6 x 15mm locking bolt with combi slotted/pozi head, PA washer, M6 caged nut with stainless-steel cage
- Pack of 44

TYPE NO.	DESCRIPTION
CAX000001	Attachment set

Front Guides Mounting



- Attached to rack by two anchoring points with M6 bolts.
- Made of steel, 2mm thick
- Zinc plated coating
- 1 Pair of guides and assembly hardware

TYPE NO.	DESCRIPTION
CAXFMG001	Front guide Mounting

LX Wheel Kit



- Set of 4 double rotating wheels with rubber rolling band or polyamide.
- Bracket made of stamped steel, with double roll of balls
- Maximum dynamic load acceptable per set: 2400N/240 Kg)

TYPE NO.	DESCRIPTION
CLX000001	LX Wheel Kit

Cable Guides Clamps



- Manufactured in steel
- Standard finish: Epoxy paint similar to RAL 9004
- Pack quantity x1

TYPE NO.	DESCRIPTION
CAX19CGC1	1U Guide
CAX19CGC2	2U Guide

UNIVERSAL ENCLOSURES

HAND HELD CASES

HEAVY DUTY ENCLOSURES

DIN RAIL BOXES

INTERFACE SUPPORTS

CONTROL STATIONS

DIECAST & METAL BOXES

DESKTOP & INSTRUMENT CASES

POTTING BOXES

19" ENCLOSURES

19" CABINETS

DEVELOPMENT BOARDS

CUSTOM SIZED ENCLOSURES

CUSTOM SERVICES



+44 (0)1638 716101
info@camdenboss.com
www.camdenboss.com

We operate a constant improvement policy, our products are subject to change without notice.

Ver 1.0

19" CABINETS

Side Mount Tray



- Manufactured in steel, 1.5mm thick.
- Easy assembly, attached to the rack at four anchoring points with M6 bolts
- Attachment points adaptable to variations in the depth of the 19" sections
- Recommended maximum static load: 60 Kg
- Standard ventilation slots
- Colour epoxy paint, anthracite -RAL 7016
- One tray with mounting hardware

TYPE NO.	WIDTH	DEPTH
CAXSMT350	424mm	350mm
CAXSMT550	424mm	550mm

Cantilever Tray

TYPE NO.	U	DEPTH
CAX2TY180	2U	180mm
CAX2TY280	2U	280mm
CAX2TY350	2U	350mm
CAX2TY400	2U	400mm

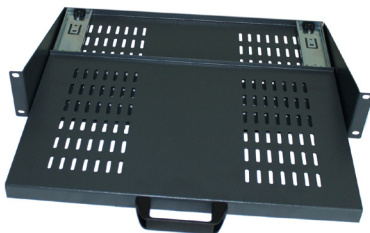
- Manufactured in steel, 1.5mm thick.
- 19" assembly with four anchoring points on the front sections
- Recommended maximum static load: 10/20 Kg
- Standard ventilation slots
- Front fastening height 2U
- One tray with mounting hardware
- Standard depths 180, 280, 350, 400mm
- Grey graphite epoxy paint, anthracite- RAL 7016
- 1 tray (screws not included)



Cantilever Telescopic Tray

TYPE NO.	U	DEPTH
CAXCTT280	2U	280mm

- Ideal for holding keyboards
- Manufactured in steel, 1.5mm thick
- 19" assembly with four anchoring points on the front sections
- Recommended maximum static load- 10kg
- Standard ventilation slots
- Front fastening height 2U
- Standard depths 280mm
- Finish: Black epoxy paint
- Telescopic guide rails nickel plated
- 1 Tray, 1 pair telescopic guides, 1 front handle



Clip-on Support Guides



- Made of steel, 2mm thick
- Quick attachment to the rack, without bolts
- Zinc plated coated
- 1 pair of guides)

TYPE NO.	DEPTH
CAXCSG345	345mm
CAXCSG545	545mm

UNIVERSAL ENCLOSURES

HAND HELD CASES

HEAVY DUTY ENCLOSURES

DIN RAIL BOXES

INTERFACE SUPPORTS

CONTROL STATIONS

DIECAST & METAL BOXES

DESKTOP & INSTRUMENT CASES

POTTING BOXES

19" ENCLOSURES

19" CABINETS

DEVELOPMENT BOARDS

CUSTOM SIZED ENCLOSURES

CUSTOM SERVICES