

ED-008

Ethernet to Digital

- **8 Digital Ports In or Out**
- **1 Ethernet Port**
- **Drives high current and high voltage loads ideal for inductive, capacitive and resistive loads**
- **User friendly software interface**
Simple web based configuration, monitoring and control
- **Legacy compatible**



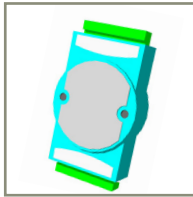
Digital Channels - 8 Ports individually selectable as Inputs or Outputs

Inputs	NPN/PNP	individually jumper selectable pull up for NPN, active low, type sensors and pull down for PNP, active high, type sensors
	Logic Level 0:	0V to +1V
	Logic Level 1:	+3.5V to +30V
	Latched Inputs:	Triggered by user programmable positive or negative edges, stays true until acknowledged
	Counter Inputs:	User programmable- counts positive or negative transitions 0-65335
Outputs	Maximum output current	Sinks up to 0.85 Amp per pin, 40V max load Max combined load 4.0 Amps per ED device
	Characteristic:	Open drain output, protected MosFET with intelligent short circuit protection
	Maximum output load Voltage	30V
	ESD Protection	16kV



Ethernet to DIO Device Server:

The Ethernet to DIO device is implemented using a Windows COM port driver that is completely compatible with all popular PC packages such as LabView, MATLAB and Agilent VEE and support a range of popular APIs. Continue to get value from your existing development and process control system.



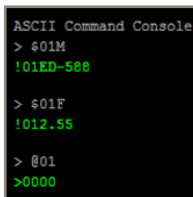
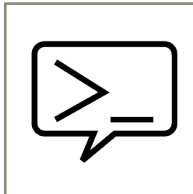
Familiar ASCII Command Protocol:

The ED range of devices uses the de facto industry standard ASCII command protocol implemented in the popular ADAM/NuDAM/EDAM modules.

Typical examples include:

\$01M	read the name of device address 01
!01ED-588	device 01 replies that its name is ED-588
\$01F	read firmware version number of device address 01
!012.54	firmware version of device 01 is 2.54
@01	read digital input output status of device 01
> 1A45	device 01 digital input data= 1A (=00011010) digital output data = 45 (=01000101)
\$012	read configuration of device 01
!01400500	device 01 40=typecode, 05 =gateway RS485 port is at 4800 Baud, 00=No checksum

The ED device's webpage has an interactive console where any command can be entered and it is immediately executed showing the device's response.



Wide Range Power Input:

+5VDC to +30VDC accommodates variation in the +24VDC factory floor and allows alternative power sources.



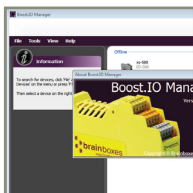
Watchdog feature:

Allows independent known good states to be set for power up, comms link watchdog and hardware watchdog. Programmable time range allows full control.



Signed Drivers and Rigorous testing:

Our software allows hassle free installation, configuration and monitoring via our easy to use webpage. The software gives local COM ports that are backwards compatible enabling legacy applications and the device to work with a myriad of different 3rd party software.



Lifetime Warranty and Support:

We can help with every aspect of your project, from getting you up and running to custom application.



Software Development

COM Port on Windows

On a PC running the Microsoft Windows family of OS's the ED Boost.IO Manager provides a standard COM port interface so enabling thousands of proven legacy applications to work straight out of the box. COM port compatibility allows you to continue to get value from your existing application software investment. Moreover your engineers don't need to retrain to use the Brainboxes ED range of I/O devices.

Industry Standard Packages

The COM port based driver means that ED-xxx devices are completely compatible with all popular packages such as: LabView, MATLAB, Agilent VEE. You can continue to get value from your existing development and process control system. Hundreds of thousands program with these packages every day.



Software Platforms

The future is mobile, with data available everywhere on demand; Brainboxes has designed a software suite which allows you to design your new systems with mobile in mind with most popular platforms and development environments supported. With APIs and sample program code for: Microsoft .NET, C#, Visual Basic, C++, JavaScript, PHP, Java, Objective-C



Devices Supported

The ED sample codes running on Operating Systems such as Windows XP, Server 2008, Server 2012, Windows 7, Windows 8, and Linux based systems such as Android and Raspberry Pi allow you to run your applications on Servers, Desktops, Laptops, Tablets, Phones or low cost embedded devices, almost any device you wish.



Configuration Options

Windows Utility, Web Interface: Boost.IO driver provides familiar Serial COM port interface

OS Compatibility

Legacy COM porty drivers for: Microsoft Windows 8 32 bit & 64 bit Editions / Microsoft Windows 7 32 bit & 64 bit Editions / Windows XP, Windows Server 2008 32 bit & 64 bit Editions / Windows Server 2008 & Windows 2000 / Windows Vista 32 bit & 64 bit Editions / Windows Server 2003 32 bit & 64 bit Editions. TCP and web browser interface for other OS's & Linux, e.g. Android, Raspberry Pi



Ethernet

Ethernet Port

1 x RJ45 jack, 10/100Mhz autosensing, crossover auto sensing (Auto MDIX)

Protection

1,500Volts magnetic isolation between I/O ports and network

Network Protocols

ICMP, IP, TCP, DHCP, Telnet, HTTP

Connection to Network

Ethernet 10BaseT / 100BaseTX

Watchdog

Power up

On power up all outputs go to user programmable power on known good state

Watchdog coms link

On loss of communications link all outputs go to a user programmable watchdog comms known good state.

Watchdog hardware timer

If the firmware does not refresh the watchdog timer within a predetermined interval then all outputs go to a user programmable watchdog hardware good state

E-Stop function

When a user programmable input transitions to a preconfigured high or low state then all outputs go to a user programmable E-Stop known good state

Browser Interface

Webserver Interface

Configure IP address, monitor state of i/o lines, set the Watchdog Timers Output Reset Value, Set Power on digital output value.

Use the interface consol to talk to the device, accepts the full ASCII command set.

Monitor CPU temperature and see visual display of inputs and outputs.



Housing and connectors

IP-30 rated non-conducting polyamide case

DIO Terminal 10 way x 0.2inch/5.08mm pitch removable screw terminal block
 Power Terminal 3 way x 0.2inch/5.08mm removable screw terminal block

Power Supply

Power Consumption 2.5 Watt Max
 Power Supply input unregulated +5V to +30Volts DC, reverse polarity protection
 Isolation 1500VRMS Magnetic isolation from Ethernet

Environmental

Operating Temperature 0°C to +60°C, +32°F to +140°F
 Storage Temperature -40°C to +85°C, -40°F to +185°F
 Ambient Relative Humidity 5 to 95% (non-condensing)

LED Information

Status LED	Green	Device Ready
	Flashing Yellow	Changing Settings
	Flashing between Red & Green	Querying IP
	Flashing Green and Red	User performing Hard Reset
	Flashing between Green & Red/Yellow	IP address diagnostic
	Flashing between Green & Yellow	Initialization diagnostic
Activity LED	Flashing Green	Output set/Input Read
	Flashing Red	Output overload
Link LED	Green	Network Link Established
	Flashing Green	Network Data RX/TX
Power LED	Green	Device has power

Packaging Information

Packaging Installation CD including manual, Microsoft signed drivers & utilities, Quick Start Guide
 Packaged Weight 0.25 kg, 0.55 pounds
 Packaged Dims 150(l) x 145(w) x 44(h) mm, 5.9(l) x 5.9(w) x 2.0(h) inches
 GTIN Universal Code 837324009811

Approvals

Industry Approvals WEEE, RoHS, AEO (C-TPAT)
 Microsoft Approvals Microsoft Certified Gold Partner
 Microsoft Signed Drivers Windows 8 32 bit & 64 bit Editions
 Windows 7 32 bit & 64 bit Editions
 Windows Server 2008 32 bit & 64 bit Editions
 Windows Server 2008 & Windows 2000
 Windows Vista 32 bit & 64 bit editions

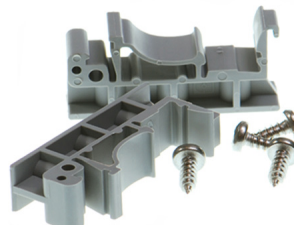


PW-600 Optional Global Power supply



Power supply with connectors for UK, USA, EU and AUS mains socket. 'Tails' are suitable for connecting to screw terminal blocks

MK-048 Optional DIN Rail Mount



Can be attached to device to enable snap on DIN rail mounting