

PrevaLED Linear Value

Light Engines – Constant Current



Areas of application

- Retail outlets
- Car parks
- Warehouses
- Outdoor applications only in suitable luminaires

Product benefits

- SELV module for easy luminaire design
- Modules can be easily joined together to make seamless strip lighting
- Slim module (comparable to a fluorescent T8 tube)
- Quick and simple installation
- Energy saving compared to T5 or T8 fluorescent lamps
- Simple system construction
- Self-cooling, no additional heat sink required
- Homogeneous illumination without shadows

Product features

- Poke-in wire connection for 0.5 mm² wire
- VDE-certified safety
- High color consistency: 4 SDCM
- Geometry according to Zhaga specification
- CE marked and UL listed
- High module efficacy: up to 130 lm/W



Technical data

Electrical data

| Product description | Nominal current | Rated wattage | Type of current |
|------------------------|-----------------|---------------|-----------------|
| PLVZ1-LIN 1100-830-280 | 0.25 A | 7.70 W | DC |
| PLVZ1-LIN 1100-840-280 | 0.25 A | 7.70 W | DC |
| PLVZ1-LIN 1300-830-560 | 0.25 A | 9.10 W | DC |
| PLVZ1-LIN 1300-840-560 | 0.25 A | 9.10 W | DC |
| PLVZ1-LIN 2200-830-560 | 0.50 A | 15.30 W | DC |
| PLVZ1-LIN 2200-840-560 | 0.50 A | 15.30 W | DC |
| PLVZ1-LIN 650-830-280 | 0.13 A | 4.60 W | DC |
| PLVZ1-LIN 650-840-280 | 0.13 A | 4.60 W | DC |

Light technical data

| Product description | Color temperature | Color rendering index Ra | Light color as per EN 12464-1 | Light color LED |
|------------------------|-------------------|--------------------------|-------------------------------|-----------------|
| PLVZ1-LIN 1100-830-280 | 3000 K | > 80 | Warm White | white |
| PLVZ1-LIN 1100-840-280 | 4000 K | > 80 | Cool White | white |
| PLVZ1-LIN 1300-830-560 | 3000 K | > 80 | Warm White | white |
| PLVZ1-LIN 1300-840-560 | 4000 K | > 80 | Cool White | white |
| PLVZ1-LIN 2200-830-560 | 3000 K | > 80 | Warm White | white |
| PLVZ1-LIN 2200-840-560 | 4000 K | > 80 | Cool White | white |
| PLVZ1-LIN 650-830-280 | 3000 K | > 80 | Warm White | white |
| PLVZ1-LIN 650-840-280 | 4000 K | > 80 | Cool White | white |

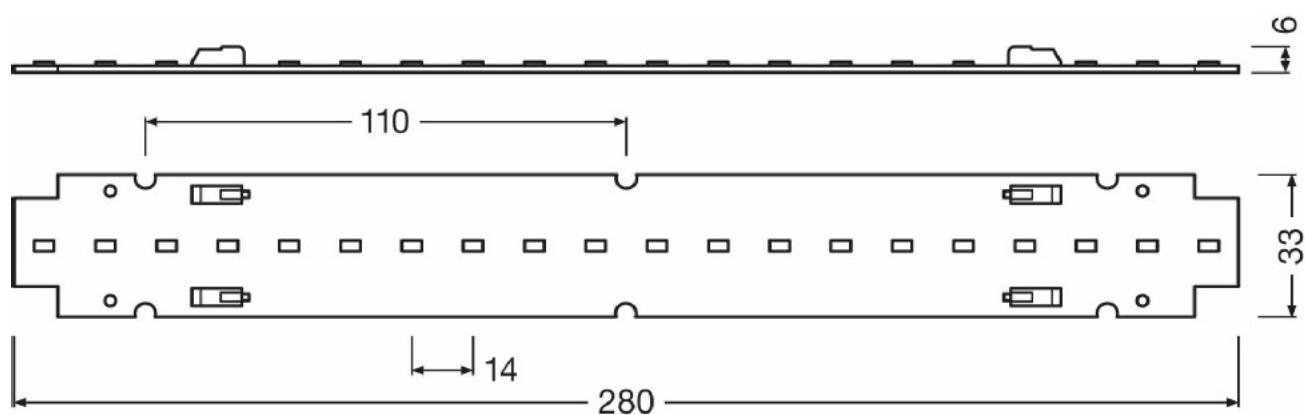
| Product description | Luminous flux | Luminous efficacy | Beam angle |
|------------------------|---------------|-------------------|------------|
| PLVZ1-LIN 1100-830-280 | 1016 lm | 121 lm/W | 115 ° |
| PLVZ1-LIN 1100-840-280 | 1077 lm | 128 lm/W | 115 ° |
| PLVZ1-LIN 1300-830-560 | 1218 lm | 122 lm/W | 115 ° |
| PLVZ1-LIN 1300-840-560 | 1292 lm | 130 lm/W | 115 ° |
| PLVZ1-LIN 2200-830-560 | 2031 lm | 122 lm/W | 115 ° |
| PLVZ1-LIN 2200-840-560 | 2154 lm | 130 lm/W | 115 ° |
| PLVZ1-LIN 650-830-280 | 609 lm | 121 lm/W | 115 ° |
| PLVZ1-LIN 650-840-280 | 646 lm | 128 lm/W | 115 ° |

Dimensions & weight

Product family datasheet

| Product description | Length |
|------------------------|----------|
| PLVZ1-LIN 1100-830-280 | 280.0 mm |
| PLVZ1-LIN 1100-840-280 | 280.0 mm |
| PLVZ1-LIN 1300-830-560 | 560.0 mm |
| PLVZ1-LIN 1300-840-560 | 560.0 mm |
| PLVZ1-LIN 2200-830-560 | 560.0 mm |
| PLVZ1-LIN 2200-840-560 | 560.0 mm |
| PLVZ1-LIN 650-830-280 | 280.0 mm |
| PLVZ1-LIN 650-840-280 | 280.0 mm |

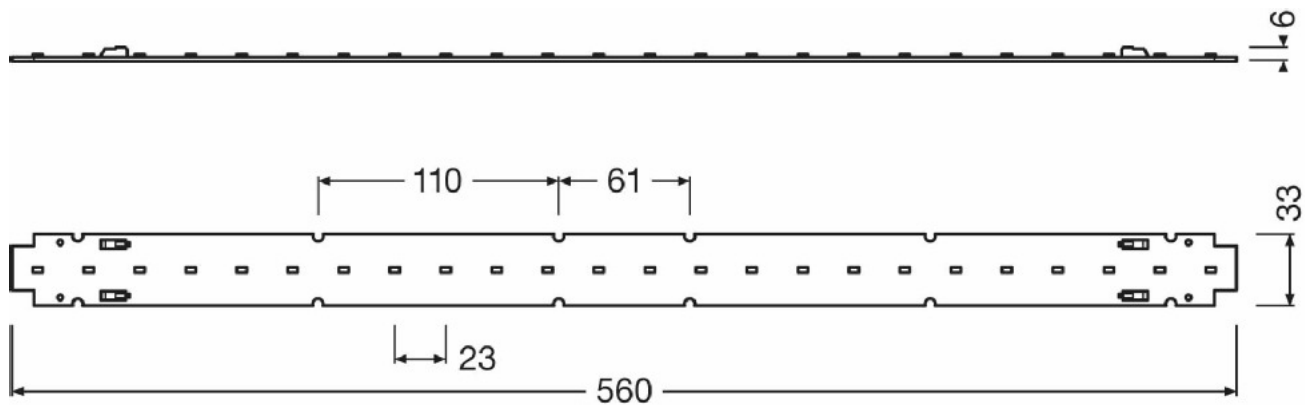
Produkt Strichzeichnungen (vermasst)



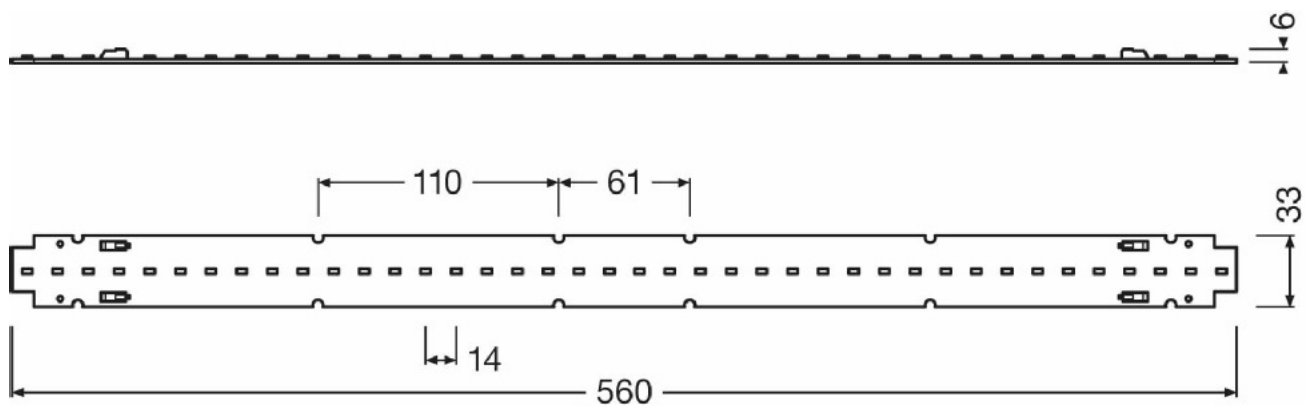
Product line drawing

PLVZ1-LIN 1100-830-280 | PLVZ1-LIN 1100-840-280

Product family datasheet

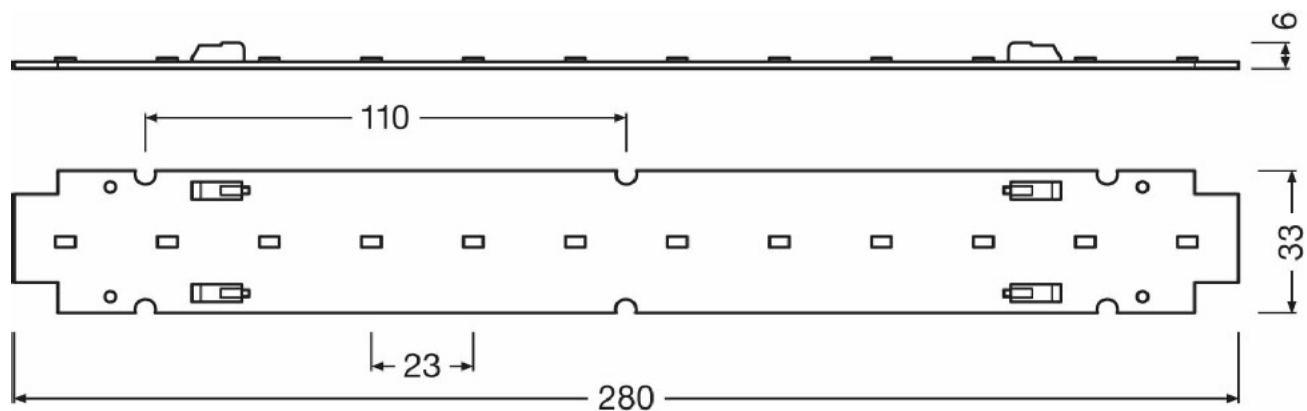


Product line drawing
PLVZ1-LIN 1300-830-560 | PLVZ1-LIN 1300-840-560



Product line drawing
PLVZ1-LIN 2200-830-560 | PLVZ1-LIN 2200-840-560

Product family datasheet



Product line drawing
 PLVZ1-LIN 650-830-280 | PLVZ1-LIN 650-840-280

Temperatures

| Product description | Maximum temperature at tc test point | Ambient temperature range |
|------------------------|--------------------------------------|---------------------------|
| PLVZ1-LIN 1100-830-280 | 70 °C | -20...+45 °C |
| PLVZ1-LIN 1100-840-280 | 70 °C | -20...+45 °C |
| PLVZ1-LIN 1300-830-560 | 70 °C | -20...+45 °C |
| PLVZ1-LIN 1300-840-560 | 70 °C | -20...+45 °C |
| PLVZ1-LIN 2200-830-560 | 70 °C | -20...+45 °C |
| PLVZ1-LIN 2200-840-560 | 70 °C | -20...+45 °C |
| PLVZ1-LIN 650-830-280 | 70 °C | -20...+45 °C |
| PLVZ1-LIN 650-840-280 | 70 °C | -20...+45 °C |

Lifespan

| Product description | Lifespan |
|------------------------|----------|
| PLVZ1-LIN 1100-830-280 | 50000 h |
| PLVZ1-LIN 1100-840-280 | 50000 h |
| PLVZ1-LIN 1300-830-560 | 50000 h |
| PLVZ1-LIN 1300-840-560 | 50000 h |
| PLVZ1-LIN 2200-830-560 | 50000 h |

Product family datasheet

| Product description | Lifespan |
|------------------------|----------|
| PLVZ1-LIN 2200-840-560 | 50000 h |
| PLVZ1-LIN 650-830-280 | 50000 h |
| PLVZ1-LIN 650-840-280 | 50000 h |

Additional product data

| Product description | Number of LEDs per module |
|------------------------|---------------------------|
| PLVZ1-LIN 1100-830-280 | 20 |
| PLVZ1-LIN 1100-840-280 | 20 |
| PLVZ1-LIN 1300-830-560 | 24 |
| PLVZ1-LIN 1300-840-560 | 24 |
| PLVZ1-LIN 2200-830-560 | 40 |
| PLVZ1-LIN 2200-840-560 | 40 |
| PLVZ1-LIN 650-830-280 | 12 |
| PLVZ1-LIN 650-840-280 | 12 |

Capabilities

| Product description | Dimmable |
|------------------------|----------|
| PLVZ1-LIN 1100-830-280 | No |
| PLVZ1-LIN 1100-840-280 | No |
| PLVZ1-LIN 1300-830-560 | No |
| PLVZ1-LIN 1300-840-560 | No |
| PLVZ1-LIN 2200-830-560 | No |
| PLVZ1-LIN 2200-840-560 | No |
| PLVZ1-LIN 650-830-280 | No |
| PLVZ1-LIN 650-840-280 | No |

Country specific categorizations

| Product description |
|------------------------|
| PLVZ1-LIN 1100-830-280 |
| PLVZ1-LIN 1100-840-280 |
| PLVZ1-LIN 1300-830-560 |
| PLVZ1-LIN 1300-840-560 |
| PLVZ1-LIN 2200-830-560 |
| PLVZ1-LIN 2200-840-560 |
| PLVZ1-LIN 650-830-280 |

Product family datasheet

Product description

PLVZ1-LIN 650-840-280







Application advice

For more detailed application information and graphics please see product datasheet.

Sales and Technical Support

Sales and Technical Support www.osram.com

Download Data

| File | |
|---|---|
|  | Product Datasheet PrevaLED Linear Value datasheet |
|  | Product Family Datasheet PrevaLED Linear Value Preliminary Datasheet |
|  | CAD data PLVZ1-Lin-1100_LEP+1100(STP+file) |
|  | CAD data PLVZ1-Lin-1300_LEP+1300(STP+file) |
|  | CAD data PLVZ1-Lin-2200_LEP+2200(STP+file) |
|  | CAD data PLVZ1-Lin-650_LEP+650(STP+file) |

Logistical Data

| Product code | Product description | Packaging unit (Pieces/Unit) | Dimensions (height x width x length) | Volume | Gross weight |
|---------------|------------------------|------------------------------|--------------------------------------|--------|--------------|
| 4052899914834 | PLVZ1-LIN 1100-830-280 | Shipping carton box 40 | - x - x - | | |
| 4052899914858 | PLVZ1-LIN 1100-840-280 | Shipping carton box 40 | - x - x - | | |
| 4052899914872 | PLVZ1-LIN 1300-830-560 | Shipping carton box 40 | - x - x - | | |
| 4052899914896 | PLVZ1-LIN 1300-840-560 | Shipping carton box 40 | - x - x - | | |

Product family datasheet

| | | | |
|---------------|------------------------|------------------------------|-----------|
| 4052899914919 | PLVZ1-LIN 2200-830-560 | Shipping carton box 40 | - x - x - |
| 4052899914933 | PLVZ1-LIN 2200-840-560 | Shipping carton box 40 | - x - x - |
| 4052899914797 | PLVZ1-LIN 650-830-280 | Shipping carton box 40 | - x - x - |
| 4052899914810 | PLVZ1-LIN 650-840-280 | Shipping carton box 40 | - x - x - |

The mentioned product code describes the smallest quantity unit which can be ordered. One shipping unit can contain one or more single products. When placing an order, for the quantity please enter single or multiples of a shipping unit.

Disclaimer

Subject to change without notice. Errors and omission excepted. Always make sure to use the most recent release.