

RASPBERRY PI STYLE ENCLOSURES

Pi Camera Enclosure

UNIVERSAL ENCLOSURES

HAND HELD CASES

HEAVY DUTY ENCLOSURES

DIN RAIL BOXES

INTERFACE SUPPORTS

CONTROL STATIONS

DIECAST & METAL BOXES

DESKTOP & INSTRUMENT CASES

POTTING BOXES

19" ENCLOSURES

19" SUBRACKS

CUSTOM SIZED ENCLOSURES

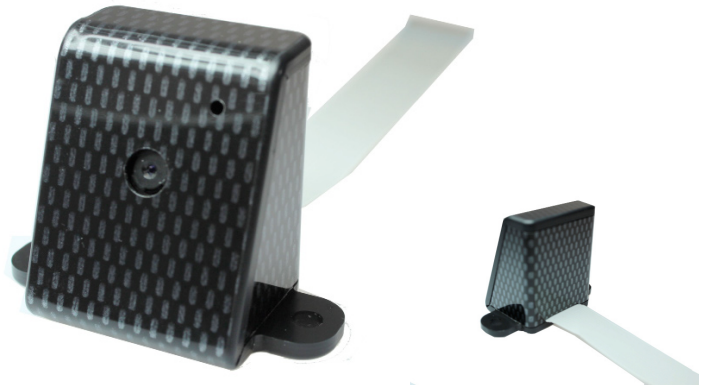
CUSTOM SERVICES

No screws, no glue – just add your **Raspberry Pi** Camera!

- Designed to house the **Pi Camera** via clip-in grooves - **NO SCREWS REQUIRED!**
- All cut-outs are pre-cut into the case - **NO MODS REQUIRED!**
- Wall mountable
- High **Gloss Finish**

Material:

- Thickness 3mm: HB Rated
- Coloured Materials: High Impact Polystyrene (HIPS)
- Carbon Fibre Finish: Acrylic Capped ABS



Raspberry Pi Camera not included

Available in a range of colours: Gloss Finish



Crystal Clear

White

Black

*Carbon Fibre

* Carbon fibre finish:Acrylic capped ABS

CB PART NO.	COLOURS
CBRPC-WHT-NL	White
CBRPC-CAR-NL	Carbon Fibre
CBRPC-BLK-NL	Black
CBRPC-CLR-NL	Crystal Clear