

## Power Relay 15

for DC or AC operation, neutral, monostable

## V23008, V23009

### Features

- High making/breaking capacity
- Mechanical and electrical characteristics comply with "Regulations for Electrical Relays in Power Installations" (VDE 0435/9.72) and "Safe Electrical Isolation of Telecommunications and Power Circuits" (VDE 0604)
- Creepage distances  $\geq 4$  mm, clearances  $\geq 3$  mm

### Versions

- Contact arrangement: 2 or 3 changeovers
- Termination: quick connect terminals
- Clear plastic cover
- Dust-protected

### Approvals



SEV 89,1 02022.02

## Power Relay 15

V23008-A0\*\*\* for AC operation  
 V23009-A0\*\*\* for DC operation  
 2 changeover contacts  
 Dust-protected  
 With quick connect terminals  
 for 6.3 mm push-on connectors  
 in acc. with DIN 46245 or DIN 46247  
 For screw fixing

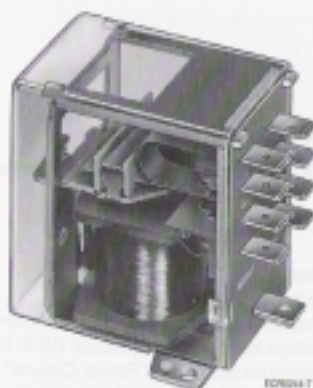
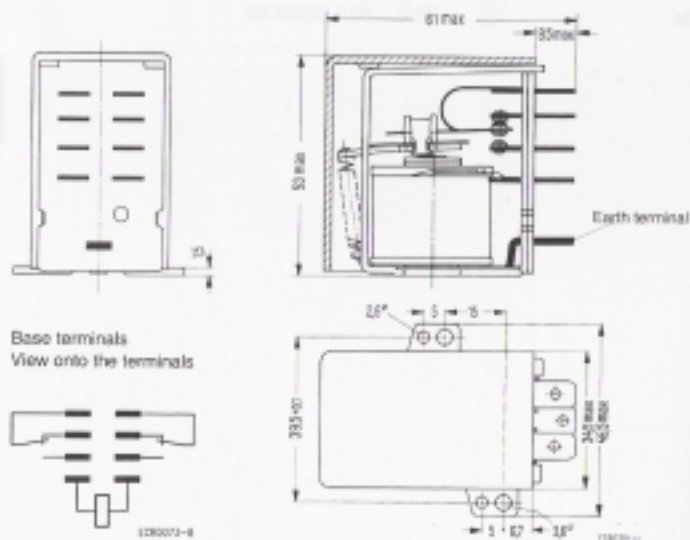


Illustration approx. 1/3 of original size  
 Approx. weight 125 g



6.30

## Power Relay 15

V23008-A0\*\*\* for AC operation  
 V23009-A0\*\*\* for DC operation  
 3 changeover contacts  
 Dust-protected  
 With quick connect terminals  
 for 4.8 mm push-on connectors  
 in acc. with DIN 46245 or DIN 46247  
 For screw fixing

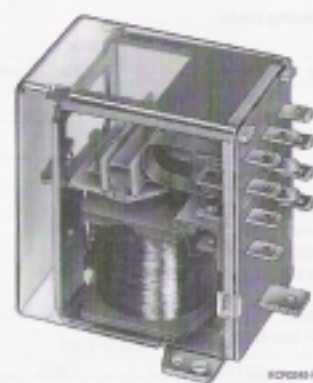
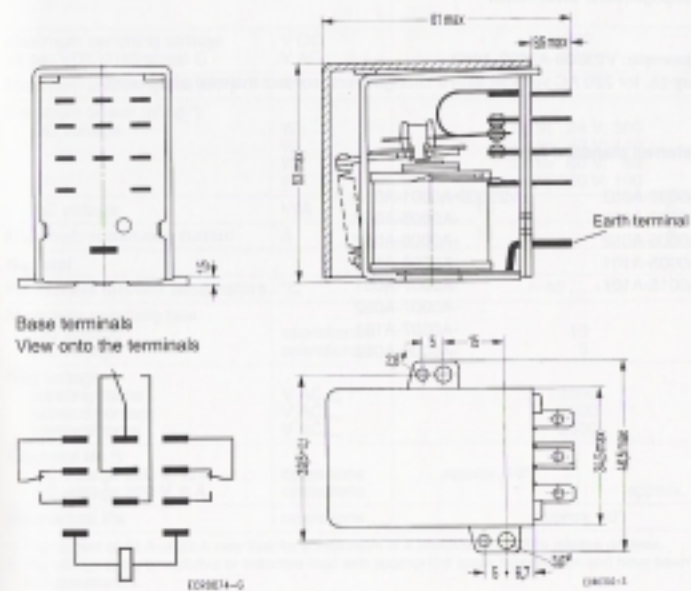


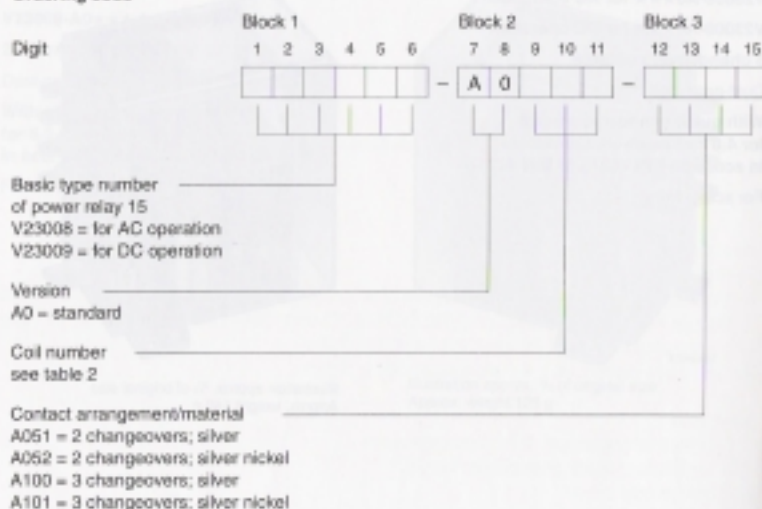
Illustration approx. 1/3 of original size  
 Approx. weight 140 g



6.31

## Power Relay 15

### Ordering code



Ordering example: V23008-A0002-A052

Power relay 15, for 220 AC voltage, with 2 changeovers, contact material silver nickel

### SCS – Preferred standard types

V23008-A0002-A052	V23009-A0001-A052
-A0002-A101	-A0005-A052
-A0005-A052	-A0006-A052
-A0005-A101	-A0006-A101
-A0015-A101	-A0007-A051
	-A0007-A052
	-A0007-A101
	-A0008-A052

## Power Relay 15

Table 1 Characteristics

Energising side		for DC voltage	for AC voltage
Relay version			see table 2
Operating voltages	V DC/AC		
Power consumption	W or VA VA	approx. 2	approx. 5.3 during switch-on approx. 3.4 after switch-on
Maximum temperature	°C	100	
Continuous thermal load at 20 °C ambient temperature	W or VA	4	7.5
Thermal resistance	K/W or K/VA	20	10
Contact side		for DC and AC voltage	
Relay version			
Contact material silver Ordering code block 3		A051	A100
Contact material silver nickel Ordering code block 3		A052	A101
Contact description		21 – 21	21 – 21 – 21
Symbols (see also base terminals)			
Maximum switching voltage as per VDE 0110 group C <sup>1)</sup>	V DC V AC	300 250	
Maximum switching current <sup>1)</sup>	A	40	20
Maximum power rating <sup>1)</sup> DC voltage	W W W W	up to 24 V: 360 up to 40 V: 140 up to 60 V: 80 up to 250 V: 100	
AC voltage	kVA	10	5
Maximum continuous current	A	15	8
General			
Permissible ambient temperature	°C	– 40 ... + 65	
Maximum switching rate DC voltage AC voltage	operations/s operations/s	10 5	
Test voltage winding/frame contact/contact contact/frame	V AC <sub>1min</sub> V AC <sub>1min</sub> V AC <sub>1min</sub>	2500 2500 2500	
Electrical life <sup>1)</sup> AC voltage 220 V, 15 A AC voltage 220 V, 6 A	operations operations	approx. 10 <sup>7</sup>	approx. 10 <sup>7</sup>
Mechanical life	operations	approx. 10 <sup>7</sup>	

<sup>1)</sup> The current of 40 A or 20 A may flow for a maximum of 4 seconds up to 10% relative on-time.

<sup>2)</sup> The ratings apply to resistive or inductive load with appropriate spark suppression and have been determined at 2 operations/s.

## Power Relay 15

**Table 2** Coil versions

for DC operation V23009-A0\*\*\*

Nominal voltage V DC	Resistance at 20 °C Ω	Coil number Ordering code block 2
6	22 ± 2.2	005
12	85 ± 8.5	006
24	300 ± 30	007
48	1000 ± 100	001
60	2100 ± 210	008
110	5300 ± 530	009
220	20400 ± 3060	010

for AC operation V23008-A0\*\*\*

Nominal voltage V AC, 50 Hz	DC resistance at 20 °C Ω	Coil number Ordering code block 2
6	1.6 ± 0.2	011
12	6.1 ± 0.6	012
24	22 ± 2.2	005
42	76 ± 7.6	022
110	620 ± 62	015
220	2900 ± 290	002
380	8600 ± 1290	027

At 65 °C ambient temperature the operating voltage may deviate by +10% or - 15% from the nominal voltage.