

87 21 250

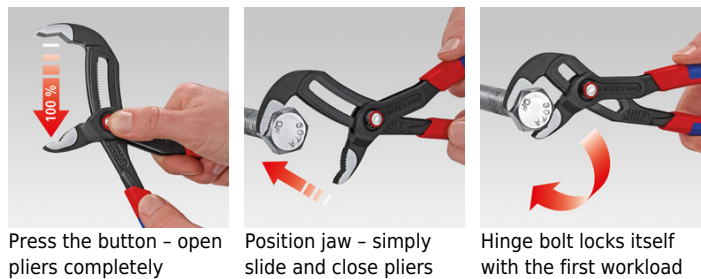
KNIPEX Cobra® QuickSet Hightech Water Pump Pliers



- Fully open, push, grab!
- additional fast adjustment on the workpiece by sliding the pliers handle
- combines the proven, reliable locking of the hinge bolt with an additional push function which makes it easier to work in very confined and inaccessible areas
- the adjustment directly on the workpiece is possible by simply sliding the pliers handle
- reliable locking of the hinge bolt with the first workload. The gripping width of the pliers is then fixed and can only be adjusted by pressing the button.
- to re-activate the sliding function, the hinge bolt must be released by pressing the push button and the pliers must be completely opened again
- Chrome vanadium electric steel, forged, oil-hardened

The Cobra® QuickSet combines all proven properties of the KNIPEX Cobra® with an additional push on function which makes it easier to work in very confined and inaccessible areas. Adjustment directly on the workpiece is possible by simply sliding the pliers handle. The hinge bolt locks itself with the first workload. The gripping width of the pliers is then fixed and can only be adjusted by pressing the button. The hinge bolt must be released by pressing the button and the pliers must be completely opened once to activate the QuickSet function again.

Article No.	87 21 250
EAN	4003773072775
Pliers	grey atramentized
Head	polished
Handles	with non-slip plastic coating
Adjustment positions	25
Capacities for pipes Ø Inch	2
Capacities for pipes Ø mm	50
Capacities for nuts mm	46
Length mm	250
Net weight g	335



technical change and errors excepted

Spare Parts

Article No.	EAN	
87 29 250		Range of spare parts adjustment for 87 2. 250