

Temperature and Humidity Virtual Chart Recorder



iTHX-SD Series



- Web Server
- Alarms by Email or Text Message
- No Special Software Required
- Records Years of Data on Popular SD Cards
- Dual Probe Option

iServer

View Temperature + Humidity with a Web Browser

The NEWPORT® iTHX-SD transmitter let's you monitor and record Temperature, Relative Humidity and Dew Point over an Ethernet network or the Internet with no special software except a Web Browser.

The iTHX-SD serves Active Web Pages to display real time readings, display charts of temperature, humidity, and dew point or log data in standard data formats for use in a spreadsheet or data acquisition program such as Excel or Visual Basic.

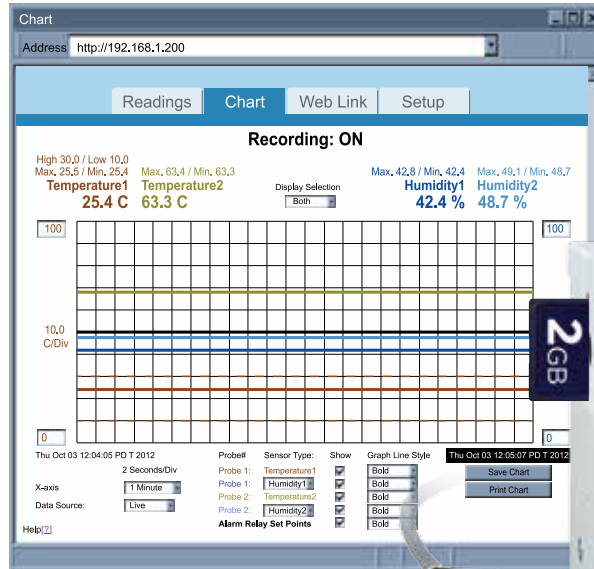
The virtual chart viewed on the web page is a JAVA™ Applet that records a chart over the LAN or Internet in real time. With the iTHX-SD, there is no need to invest time and money learning a proprietary software program to log or chart the data.

SD Flash Memory Card

The iTHX-SD comes complete with a removable 2 GB SD Flash Memory card that can store up to seven years of readings taken at ten second intervals.

Records on SD Flash Cards

The data is recorded on widely available SD (Secure Digital) flash cards. The format is a simple text file that is easily imported to spread sheets and other programs. It can be read on a PC or MAC with a USB card reader. You can also download the data remotely over an Ethernet network or the Internet.



Alarm Relays

The iTHX-SD features two 1.5 Amp relays. With the easy Web-based setup page, the two relays can be programmed for any combination of temperature or humidity, and high or low set points. The relays can also be programmed to remain latched and require a manual reset if a limit is exceeded.

Battery Backup

The iTHX-SD comes with a universal 100 to 240 Vac power adapter. A standard 9 Volt Alkaline battery (also included) allows the device to log data for up to 2 days without external ac power. A failure on the Ethernet network will not Interrupt data recording.

Adjustable Charts

Chart scales are fully adjustable on the fly. For example, the chart can display one minute, one hour, one day, one week, one month or one year. Temperature and humidity can be charted across the full span (-40 to 124°C, and 0 to 100% RH) or within any narrow range such as (20 to 30°C).

When a second sensor is added, users can select a chart that records channel 1, channel 2 or the difference of the two channels.

Award-Winning Technology

The iTHX-SD is simple to install and use, and features Newport's award winning iServer technology that requires no special software except a Web Browser.



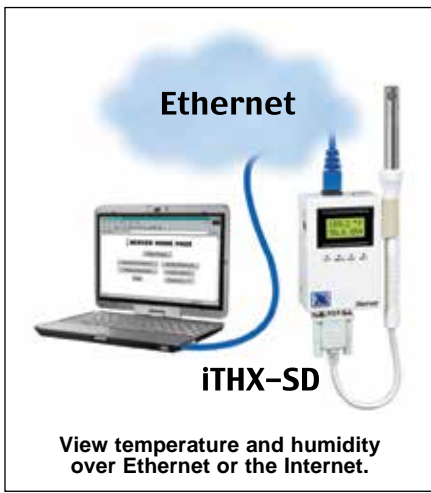
iTHX-SD-5D, shown smaller than actual size with SD card (included) and DB9-Y cable for dual probe.

The iTHX-SD connects to an Ethernet Network with a standard RJ45 connector and sends data in standard TCP/IP packets. It is easily configured with a simple menu using a Web Browser and can be password protected.

From within an Ethernet LAN or over the Internet, the user simply types its IP address or an easy to remember name such as "Cleanroom5" or "ServerRoom" in any Web Browser, and the iTHX-SD serves a Web Page with the current readings.

Email Alarms

All iTHX-SD models that are on a LAN that is connected to the Internet can trigger an alarm that can be sent by email to a user or a distribution list anywhere in the world, including text messages to cell phones and PDA's.



View temperature and humidity over Ethernet or the Internet.

Link to Web CAM or IP Camera

The Web page includes a link to a "Web Cam" or "IP camera" (not included). If you get a message about an alarm condition, you can quickly click on the link to view the actual scene over the Internet.

Display and Chart Two Channels

The iTHX-SD transmitters come complete with a temperature and humidity probe for measurement of a single location.

With the addition of a second probe, the iTHX-SD transmitter can measure and display temperature, humidity and dew point in a second location up to ten feet away.

The transmitter can display and chart absolute measurements in both locations, or a differential measurement between the two locations. The second probe requires no change to the basic iTHX-SD transmitter hardware, it can be added at the time of purchase or in the future. Newport offers a choice of industrial probes in 2" and 5" lengths, and a wand style for ambient indoor applications. A simple DB-9 "Y" connector is available for adding a second probe.

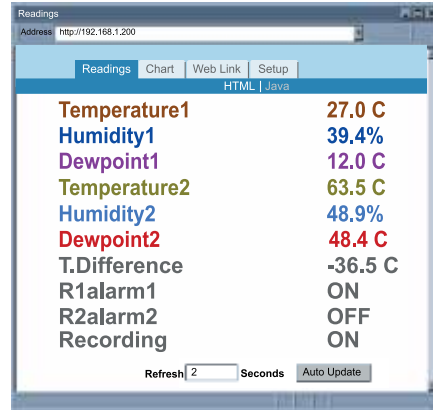
Sensor and Calibration

It is not necessary to take the iTHX-SD out of service for routine calibration. The temperature/humidity sensors are interchangeable and can be replaced for about the same cost as a typical calibration. Newport offers replacement sensors with optional 3-point NIST traceable calibration certificates.

NIST Traceable Calibration Certificate available.
 In compliance with ISO9001:2008, ISO10012-1, 1992(E), ANSI/NCSS Z540-1, 1994 and MIL-STD-45662A.

Typical Applications

The iTHX-SD is great for monitoring temperature + humidity in applications such as: clean rooms, computer rooms, HVAC systems, pharmaceutical and food processing and storage, hospitals, laboratories, semiconductor fabs, electronic assembly, warehousing, museums, manufacturing, greenhouses, farm animal shelters, and many more.



Sensor Specifications

Relative Humidity

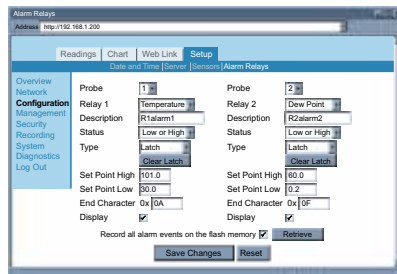
- Accuracy/Range:**
- 10 to 90%: ±2%
- 5 to 10% and 90 to 95%: ±3%
- 0 to 5% and 95 to 100%: ±4%
- Non-linearity:** ±3%
- Hysteresis:** ±1%RH
- Response Time:** 8 seconds, tau 63%
- Repeatability:** ±0.1%
- Resolution:** 0.1%, 12 bit

Temperature

- Accuracy/Range***
- Wand Probe:** ±0.5°C (±1°F) for 5 to 45°C (41 to 113°F); up to ±1°C (up to ±2°F) for 0 to 5°C and 45 to 60°C (32 to 41°F and 113 to 140°F)
- Industrial Probe:** (see chart in manual) ±0.5°C (±1°F) for 5 to 45°C (41 to 113°F); up to ±1.5°C (up to ±2.7°F) for -40 to 5°C and 45 to 124°C (-40 to 41°F and 113 to 255°F)

*Note: Extended temperature range is for Ind. probe only, the iServer's operating temperature is 0 to 60°C

- Response Time:** 5 to 30 seconds, tau 63%
- Repeatability:** ±0.1°C
- Resolution:** 0.1°C, 14 bit



Alarm relay configuration through embedded Web server

Probe Specifications

Wand Probe:

198 L x 19 mm Dia (7.8 L x 0.75" Dia)

Cable with DB9 Connector:

152 mm L (6" L)

Cable Operating Temperature:

0 to 80°C (32 to 176°F)

Industrial Probe iTHP-5, iTHP-2:

137 L or 51 L x 16 mm Dia

(5 L or 2 L x 0.63" Dia)

Housing Material: 316 SS

Cable with DB9 Connector:

3 or 0.9 m L (10 or 3')

Cable Operating Temperature:

-40 to 125°C (-40 to 257°F)

iServer Specifications

Interfaces

Ethernet: (RJ45)

Fixed or auto-negotiating
 10/100BASE-T, Auto MDI/MDIX

Supported Protocols:

TCP, UDP, SNMP, SMTP, NTP, ARP, ICMP, DHCP, DNS, HTTP and Telnet

Sensor: Digital 4-wire, DB9

LCD Display: 16 digits, 6 mm (0.23")

SD Flash Memory Card:

2GB card: 8 months of data storage at 1 second recording intervals or 7 years at 10 second intervals

Relay Outputs:

Two relays 1.5 A @ 30 Vdc

Embedded Web Server:

Serves Web pages containing real-time data and live updated charts within definable time intervals

Software: OPC Server; macro for datalogging in Excel program; compatible with Windows operating systems

Power

Input: 9 to 12 Vdc

Safety qualified AC power adapter:

Nominal Output: 9 Vdc @ 0.5 A

Input: 100 to 240 Vac, 50/60Hz (included)

Back-up Battery:

9 Vdc, alkaline (included)

Environmental

Operating Temperature:

iServer unit: 0 to 60°C (32 to 140°F)

Battery: -18 to 55°C (0 to 131°F)

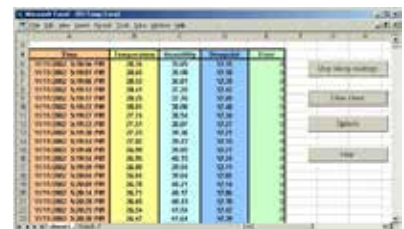
ac Adapter: 0 to 40°C (32 to 104°F)

Storage Temperature: -40 to 85°C

(-40 to 185°F)

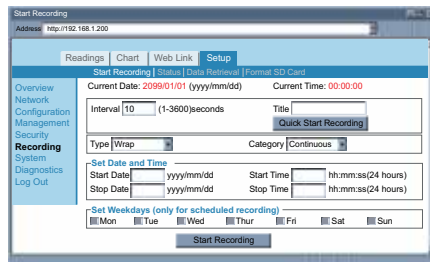
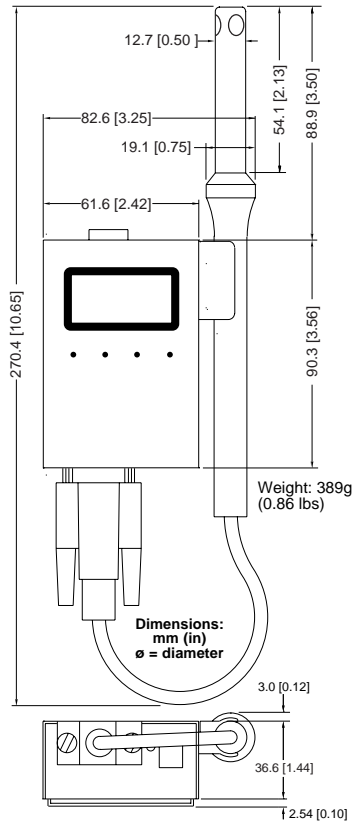
Packaging

Material: Steel metal case with wall mount bracket

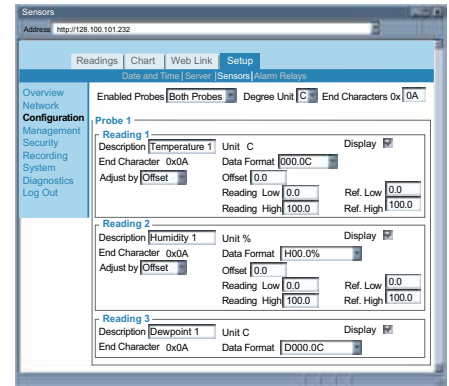


Data logging Spreadsheet

Mechanical



Recording Setup

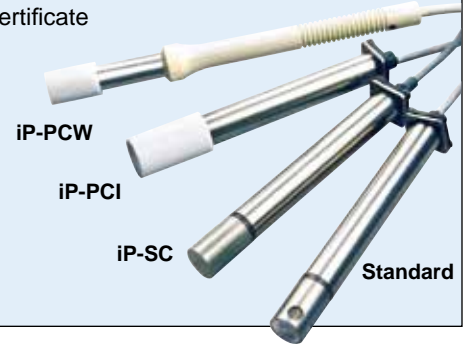


Sensor Configuration

Replacement Probes with Calibration Certificate available, just add: "-CAL-3-HU"

Optional Probe Caps shown

No need to take your unit out of service for routine calibration. Order a calibrated probe instead.



To Order Visit newportUS.com/ithx-sd for Pricing and Details

Model No.	Description
iTHX-SD	iServer MicroServer™ for temperature + humidity and dew point, LCD display, 2GB SD flash memory card, 2 relay alarm, battery back-up. Standard 203 mm (8") wand probe, cable 152 mm (6") with DB9 connector.
iTHX-SD-2	iServer MicroServer™ with industrial 51 mm (2") probe, cable 0.9 m (3') with DB9 connector. substitution for wand probe
iTHX-SD-5	iServer MicroServer™ with industrial 137 mm (5") probe, cable 3 m (10') with DB9 connector. substitution for wand probe
iTHX-SD-WD	iServer MicroServer™ includes two wand probes
iTHX-SD-2D	iServer MicroServer™ includes two probes, wand and 51mm (2") industrial probe with 0.9m (3 ft) cable
iTHX-SD-5D	iServer MicroServer™ includes two probes, wand and 137mm (5") industrial probe with 3m (10 ft) cable
Accessories	
iTHP-W-6	Wand 203 mm (8") probe, cable 152 mm (6")
iTHP-2-DB9	Industrial 51 mm (2") probe, cable 0.9 m (3') [†]
iTHP-5-DB9	Industrial 137 mm (5") probe, cable 3 m (10') [†]
DB9-Y	DB9 "Y" Connector Adaptor for 2 Probes with DB9 Connector
DB9-CA-3	Extension cable, 0.9 m (3') with DB9 connectors
iP-PCI-10P	Porous Polyethylene industrial probe cap, for wet environments, 10 caps per pack
iP-PCW-10P	Porous Polyethylene wand probe cap, for wet environments, 10 caps per pack
iP-SC	Porous stainless steel probe cap, 5 um porosity, for dusty, pressurized (<35 psi) environments
CAL-3-HU	NIST traceable calibration certificate. 3 points of 25%, 50%, 75% RH, temperature 25°C (77°F), for new units
CT485B-CAL-KIT	Calibration kit, 33% and 75% RH standards
* -CAL-3-HU	Calibrated replacement probe and NIST traceable calibration certificate (for * insert probe type)

[†] Other lengths of cable (up to 40') are available, please contact our Sales Department. **Note:** Volume discounts are available.
Ordering Example: iTHX-SD with LCD display, SD card, 2 relay alarm, battery back-up and wand probe.
 iTHP-W-6-CAL-3-HU, calibrated replacement probe with certificate.

Part Number Builder

(1)

iTHX-SD-5

(2)

-2D

Option Descriptions

- (1) **iServer MicroServer™ for temperature humidity and dew point with LCD display 2GB SD flash memory card 2 relay alarm battery backup and universal power supply**

Select

iTHX-SD for standard wand probe

iTHX-SD-2 for substituting the wand probe with industrial 51mm (2in) probe with 0.9m (3ft) cable

iTHX-SD-5 for substituting the wand probe with industrial 137mm (5in) probe with 3m (10ft) cable

- (2) **Dual Probe options**

Select

Nothing (leave field blank) for no dual probe option

-2D for additional industrial 51mm (2in) probe with 0.9m (3ft) cable and "Y" cable

-5D for additional industrial 137mm (5in) probe with 3m (10ft) cable and "Y" cable

-WD for additional wand probe and "Y" cable