

Number of contacts

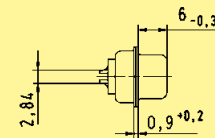
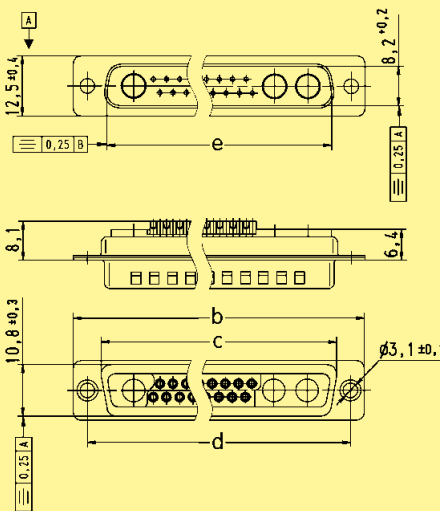
7-27



Mixed shells with pre-mounted signal solder cup contacts

| Identification | No. of contacts ¹⁾ | Part No. | | | |
|----------------|-------------------------------|---------------------|------------------|---------------------|------------------|
| | | male connectors | | female connectors | |
| | | Performance level 3 | S4 ²⁾ | Performance level 3 | S4 ²⁾ |
| | 7W2 | 09 69 211 7072 | 09 69 211 5072 | 09 69 201 7072 | 09 69 201 5072 |
| | 17W2 | 09 69 311 7172 | 09 69 311 5172 | 09 69 301 7172 | 09 69 301 5172 |
| | 21WA4 | 09 69 411 7214 | 09 69 411 5214 | 09 69 401 7214 | 09 69 401 5214 |
| | 27W2 | 09 69 411 7272 | 09 69 411 5272 | 09 69 401 7272 | 09 69 401 5272 |

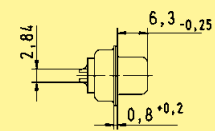
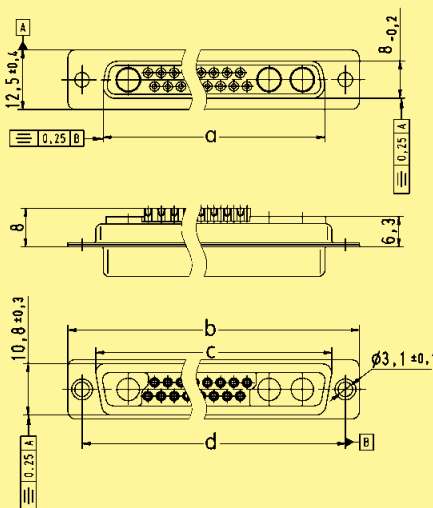
Male connectors



Solder cup termination for AWG 20 (0.5 mm²)

| | a | b | c | d | e |
|-------|------|------|------|-------|------|
| 7W2 | 24.6 | 39.1 | 27.5 | 33.30 | 25.2 |
| 17W2 | 38.3 | 53.0 | 41.3 | 47.04 | 38.9 |
| 21WA4 | 54.8 | 69.3 | 57.7 | 63.50 | 55.3 |
| 27W2 | 54.9 | 69.3 | 57.7 | 63.50 | 55.3 |

Female connectors



Solder cup termination for AWG 20 (0.5 mm²)

Dimensions in mm

¹⁾ Explanations see page 05.49
²⁾ S4 = 0.76 µm Au or PdNi equivalent

Board drillings see pages 05.76 ff
 Order special contacts separately. See pages 05.67 ff