

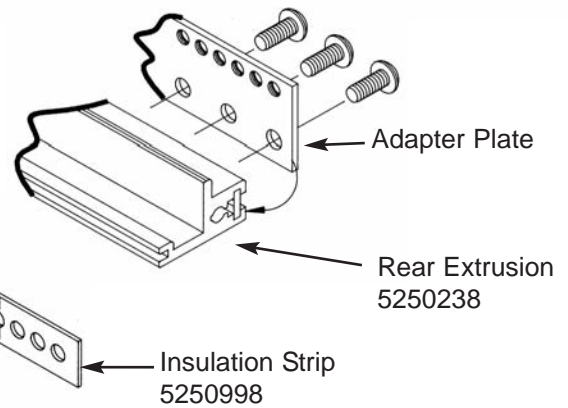
Non EMC DIN-Based VectorPak™ Subracks

Rack Components
& Accessories



Adapter Plates (Z-Rail Type)

Part No.	Description
AS1/2 (Pkg of 2)	Adapter plate for mounting DIN connectors directly onto subrack, 84 tapped holes (2.5mm x 4.5mm pitch) To be used without backplane



Insulation Strips

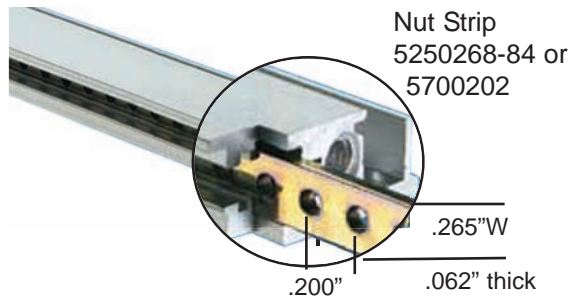
Mounted between backplane and rear extrusion

Part No.	HP	Width
5250998-84	84	17.00" (431.8mm)

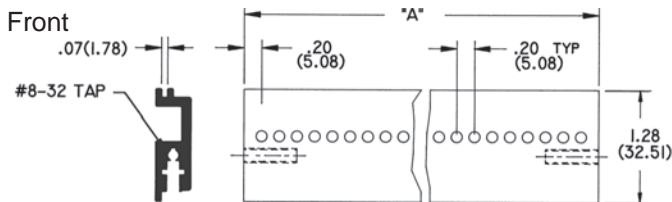
Nut Strips

Threaded mounting holes spaced at 0.2" centers slide into extrusion grooves, can be used to anchor panels, cards or other components. Used on front & rear extrusions on all Vector DIN based metric subracks.

Part No.	HP	Width
5250268-84	84	17" (431.8mm)
5250268-63	63	12.8" (325.1mm)
5250268-42	42	8.6" (218.4mm)
5250268-21	21	4.4" (111.8mm)



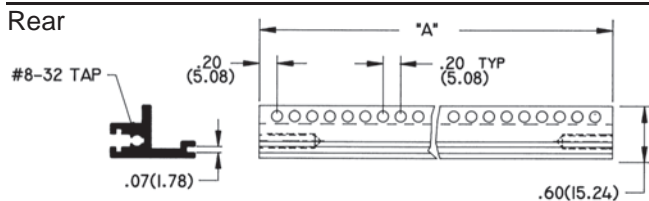
Extrusions



All extrusions available in any length

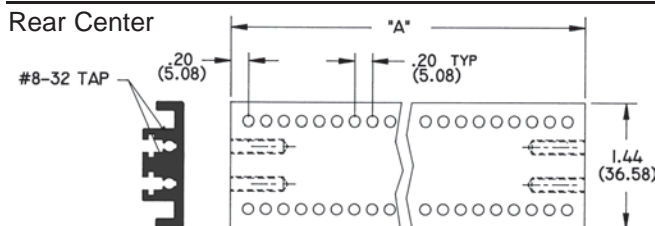
Part No.	HP	A
5250236-84	84	17.00" (431.8)
5250236-63	63	12.80" (325.8)
5250236-42	42	8.60" (218.4)
5250236-21	21	4.40" (111.8)

Pack of 12 8-32 screws, P/N HD94



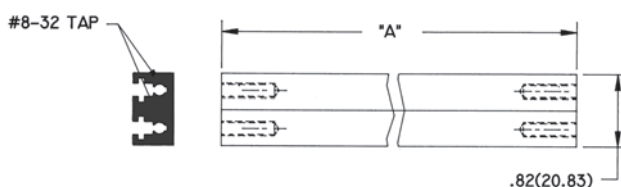
Part No.	HP	A
5250238-84	84	17.00" (431.8)
5250238-63	63	12.80" (325.8)
5250238-42	42	8.60" (218.4)
5250238-21	21	4.40" (111.8)

Pack of 12 8-32 screws, P/N HD94



Part No.	HP	A
5250237-84	84	17.00" (431.8)
5250237-63	63	12.80" (325.8)
5250237-42	42	8.60" (218.4)
5250237-21	21	4.40" (111.8)

Pack of 12 8-32 screws, P/N HD94

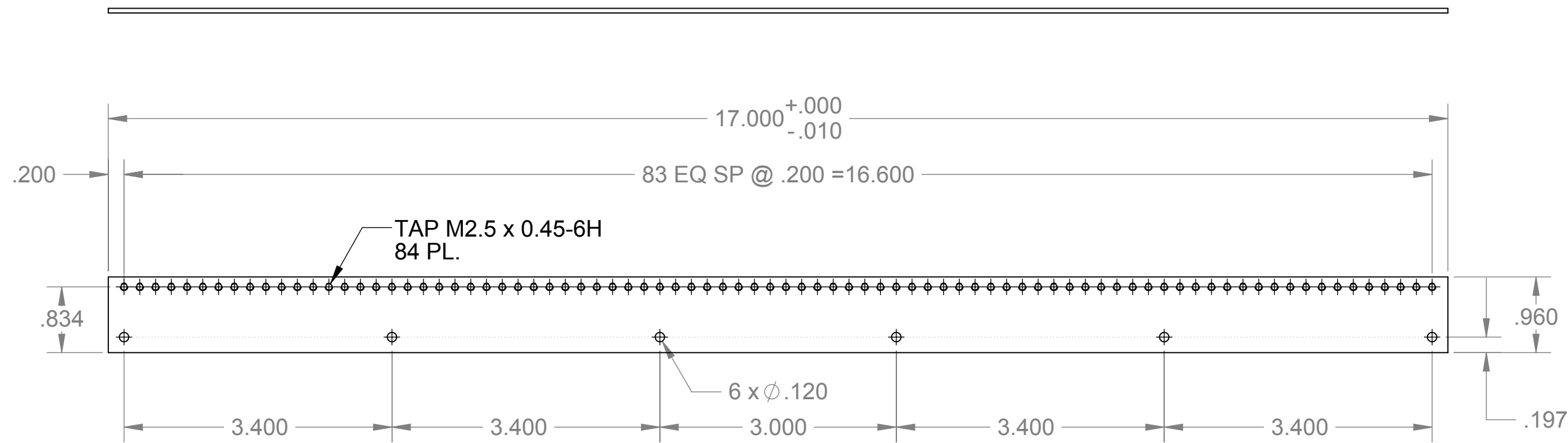


Part No.	HP	A
5250229-84	84	17.00" (431.8)
5250229-63	63	12.80" (325.8)
5250229-42	42	8.60" (218.4)
5250229-21	21	4.40" (111.8)

Pack of 12 8-32 screws, P/N HD94



REVISIONS				
ZONE	REV.	DESCRIPTION	DATE	APPROVED
ALL	B			



SOLD IN 17.000" LENGTH TO BE CUT TO SIZE
VECTOR P/N # AS1/2 (pkg of 2)

PART NO.	DESCRIPTION
AS1/2 (Pkg of 2)	Adapter plate for mounting DIN connectors directly onto subrack, 84 tapped holes (2.5mm x 4.5mm pitch) to be used without backplane

- 3. REMOVE ALL BURRS & SHARP EDGES
- 2. FINISH: ZINC PLATE PER ASTM-B-633, CLASS 3, TYPE I
- 1. MAT'L: STEEL, COLD ROLLED, 16 GA.

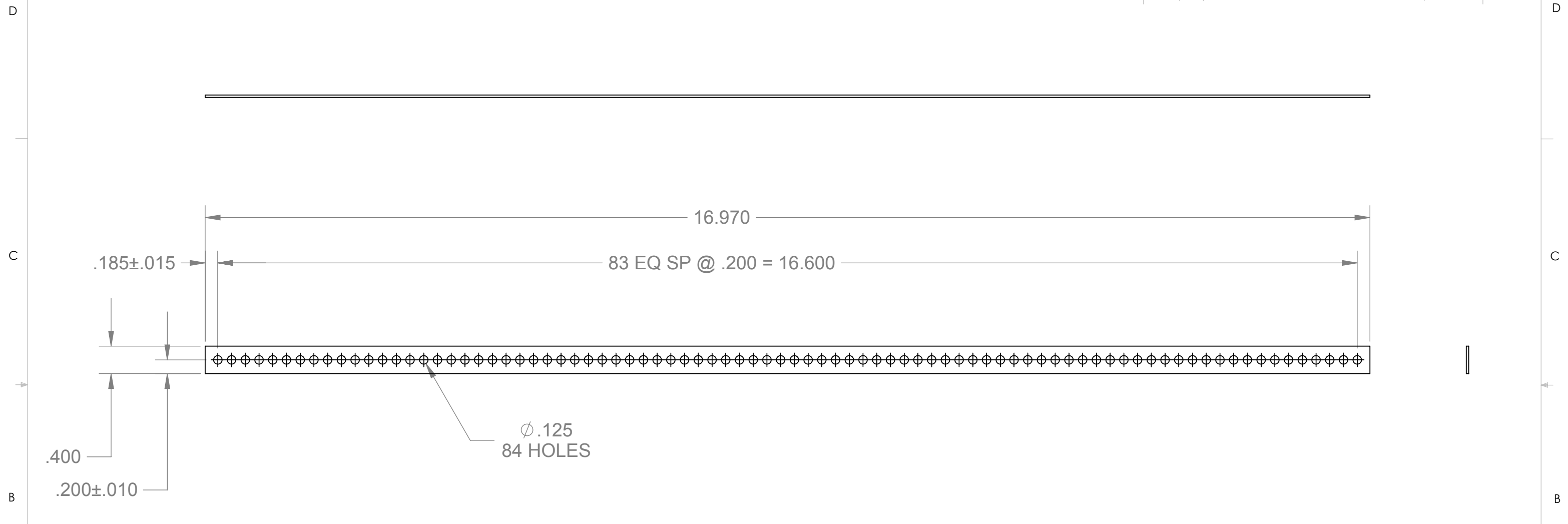
NOTES: UNLESS OTHERWISE SPECIFIED.

PROPRIETARY AND CONFIDENTIAL
THE INFORMATION CONTAINED IN THIS DRAWING IS THE SOLE PROPERTY OF VECTOR ELECTRONICS & TECH., INC. ANY REPRODUCTION IN PART OR AS A WHOLE WITHOUT THE WRITTEN PERMISSION OF VECTOR ELECTRONICS & TECH., INC. IS PROHIBITED.

UNLESS OTHERWISE SPECIFIED:	NAME	DATE
DIMENSIONS ARE IN INCHES	DRAWN TRUSHAR	01/13/09
TOLERANCES:	CHECKED	
FRACTIONAL ±	ENG APPR.	
ANGULAR: ± 5°	MFG APPR.	
TWO PLACE DECIMAL ±.02	Q.A.	
THREE PLACE DECIMAL ±.005		
INTERPRET GEOMETRIC TOLERANCING PER:		
MATERIAL 1	THIRD ANGLE PROJECTION	
FINISH 2		
DO NOT SCALE DRAWING		

VECTOR ELECTRONICS & TECHNOLOGY, INC.		11115 VANOWEN ST., NORTH HOLLYWOOD, CA 91605	
DIN ADAPTER PLATE VME CARD CAGE			
SIZE DWG. NO.	REV		
B	5700201	B	
SCALE: 2:3	WEIGHT:	SHEET 1 OF 1	

REVISIONS				
ZONE	REV.	DESCRIPTION	DATE	APPROVED
ALL	C	INC ECO 3213 & REDRAWN	08/13/86	
	C1	INC ECO 3873	08/13/90	



SOLD IN 16.970" LENGTH TO BE CUT TO SIZE
VECTOR P/N # 5250998-84

PART NO.	DESCRIPTION
5250998-84	Mounted between backplane and rear extrusion

- 2. INSPECTION: ACCEPTABLE UP TO .040 THK.
- 1. MAT'L: PP VINYL SHEET, .026 TO .033 THK., (COLOR : BLACK), P/N 99400003

NOTES: UNLESS OTHERWISE SPECIFIED.

PROPRIETARY AND CONFIDENTIAL
THE INFORMATION CONTAINED IN THIS DRAWING IS THE SOLE PROPERTY OF VECTOR ELECTRONICS & TECH., INC. ANY REPRODUCTION IN PART OR AS A WHOLE WITHOUT THE WRITTEN PERMISSION OF VECTOR ELECTRONICS & TECH., INC. IS PROHIBITED.

UNLESS OTHERWISE SPECIFIED:
DIMENSIONS ARE IN INCHES
TOLERANCES:
FRACTIONAL \pm
ANGULAR: $\pm 5^\circ$
TWO PLACE DECIMAL $\pm .02$
THREE PLACE DECIMAL $\pm .005$
INTERPRET GEOMETRIC TOLERANCING PER:
MATERIAL **1**
FINISH
DO NOT SCALE DRAWING

NAME	DATE
DRAWN TRUSHAR	01/12/09
CHECKED	
ENG APPR.	
MFG APPR.	
Q.A.	

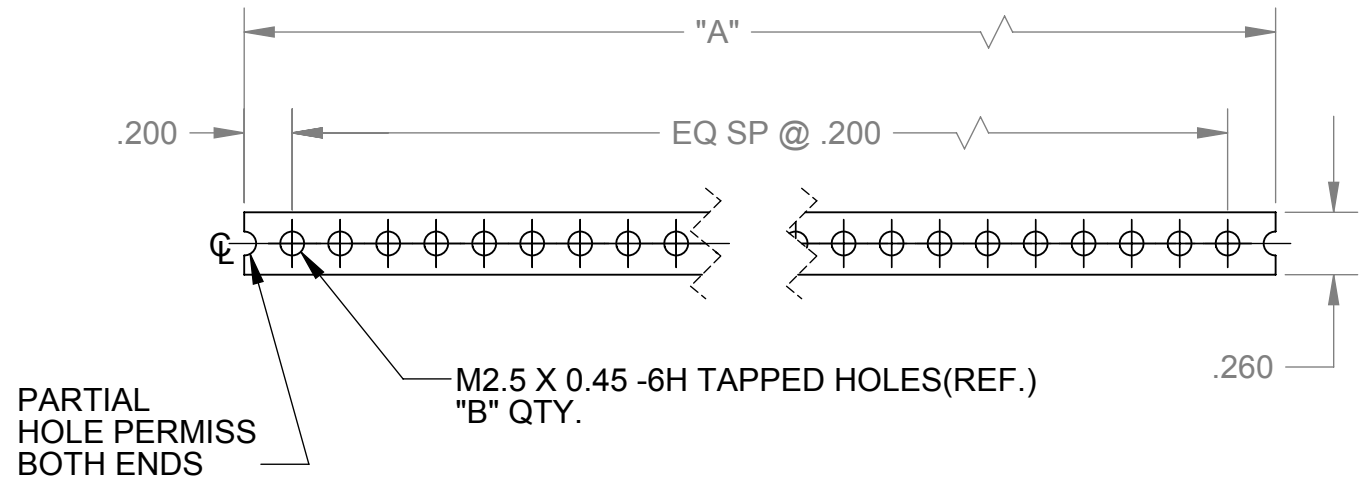
THIRD ANGLE PROJECTION

VECTOR 11115 VANOWEN ST., NORTH HOLLYWOOD, CA 91605
ELECTRONICS & TECHNOLOGY, INC

**INSULATION STRIP
VME CARD CAGE**

SIZE DWG. NO.	REV
B	C1

SCALE: 1:1 WEIGHT: SHEET 1 OF 1



REVISIONS				
ZONE	REV.	DESCRIPTION	DATE	APPROVED
ALL	A			

PARTIAL HOLE PERMISS BOTH ENDS

M2.5 X 0.45 -6H TAPPED HOLES(REF.) "B" QTY.

TABULATION		
PART NO.	"A"	"B"
5250268-03	0.800	3
5250268-04	1.000	4
5250268-05	1.200	5
5250268-06	1.400	6
5250268-07	1.600	7
5250268-08	1.800	8
5250268-09	2.000	9
5250268-10	2.200	10
5250268-11	2.400	11
5250268-12	2.600	12
5250268-13	2.800	13
5250268-14	3.000	14
5250268-15	3.200	15
5250268-16	3.400	16
5250268-17	3.600	17
5250268-18	3.800	18
5250268-19	4.000	19
5250268-20	4.200	20
5250268-21	4.400	21

6

TABULATION		
PART NO.	"A"	"B"
5250268-22	4.600	22
5250268-23	4.800	23
5250268-24	5.000	24
5250268-25	5.200	25
5250268-26	5.400	26
5250268-27	5.600	27
5250268-28	5.800	28
5250268-29	6.000	29
5250268-30	6.200	30
5250268-31	6.400	31
5250268-32	6.600	32
5250268-33	6.800	33
5250268-34	7.000	34
5250268-35	7.200	35
5250268-36	7.400	36
5250268-37	7.600	37
5250268-38	7.800	38
5250268-39	8.000	39
5250268-40	8.200	40
5250268-41	8.400	41
5250268-42	8.600	42

6

TABULATION		
PART NO.	"A"	"B"
5250268-43	8.800	43
5250268-44	9.000	44
5250268-45	9.200	45
5250268-46	9.400	46
5250268-47	9.600	47
5250268-48	9.800	48
5250268-49	10.000	49
5250268-50	10.200	50
5250268-51	10.400	51
5250268-52	10.600	52
5250268-53	10.800	53
5250268-54	11.000	54
5250268-55	11.200	55
5250268-56	11.400	56
5250268-57	11.600	57
5250268-58	11.800	58
5250268-59	12.000	59
5250268-60	12.200	60
5250268-61	12.400	61
5250268-62	12.600	62
5250268-63	12.800	63

6

TABULATION		
PART NO.	"A"	"B"
5250268-64	13.000	64
5250268-65	13.200	65
5250268-66	13.400	66
5250268-67	13.600	67
5250268-68	13.800	68
5250268-69	14.000	69
5250268-70	14.200	70
5250268-71	14.400	71
5250268-72	14.600	72
5250268-73	14.800	73
5250268-74	15.000	74
5250268-75	15.200	75
5250268-76	15.400	76
5250268-77	15.600	77
5250268-78	15.800	78
5250268-79	16.000	79
5250268-80	16.200	80
5250268-81	16.400	81
5250268-82	16.600	82
5250268-83	16.800	83
5250268-84	17.000	84

6

- 6. DASH NOS. INDICATE RACK SPACE IN "HP" UNITS (HOLE PITCH OF .200)
- 5. DEGREASE & SEAL CUT ENDS
- 4. MAKE FROM P/N # 5700202
- 3. REMOVE ALL BURRS & SHARP EDGES
- 2. FINISH: ZINC PLATE PER ASTM-B-633, CLASS 3, TYPE I
- 1. MAT'L: STEEL, COLD ROLLED, 16 GA.(.0598) (REF.)

NOTES: UNLESS OTHERWISE SPECIFIED.

PROPRIETARY AND CONFIDENTIAL
 THE INFORMATION CONTAINED IN THIS DRAWING IS THE SOLE PROPERTY OF VECTOR ELECTRONICS & TECH., INC. ANY REPRODUCTION IN PART OR AS A WHOLE WITHOUT THE WRITTEN PERMISSION OF VECTOR ELECTRONICS & TECH., INC. IS PROHIBITED.

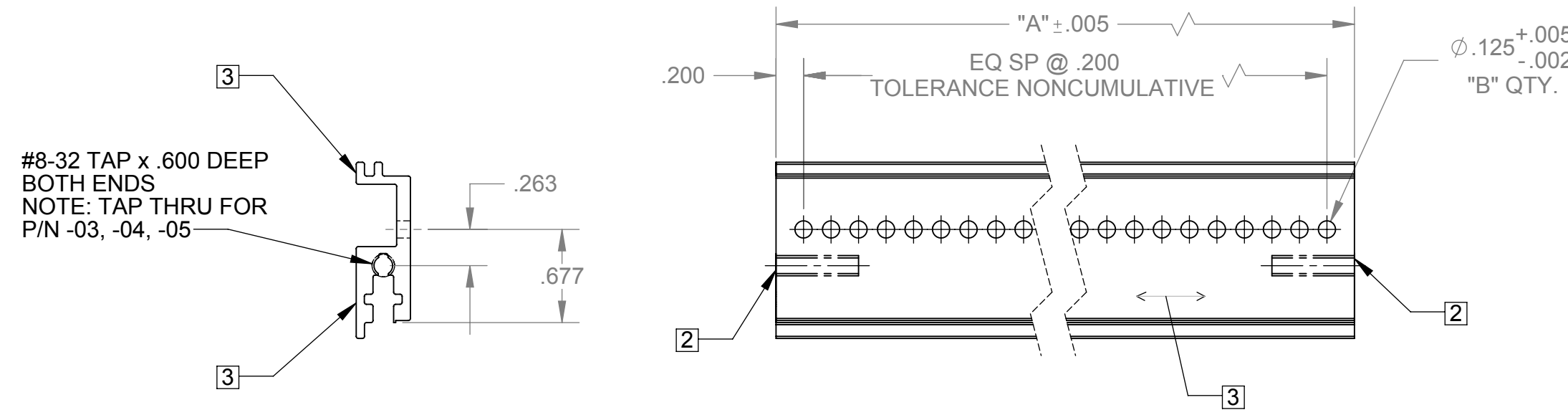
UNLESS OTHERWISE SPECIFIED:		NAME	DATE
DIMENSIONS ARE IN INCHES		DRAWN	TRUSHAR 01/09/09
TOLERANCES:		CHECKED	
FRACTIONAL ±		ENG APPR.	
ANGULAR: ± 5°		MFG APPR.	
TWO PLACE DECIMAL ±.03		Q.A.	
THREE PLACE DECIMAL ±.010			
INTERPRET GEOMETRIC TOLERANCING PER:			
MATERIAL 1		THIRD ANGLE PROJECTION	
FINISH 2			
DO NOT SCALE DRAWING			

VECTOR 11115 VANOWEN ST., NORTH HOLLYWOOD, CA 91605
 ELECTRONICS & TECHNOLOGY, INC

NUT STRIP CARD CAGES

SIZE DWG. NO.	REV
B 5250268	A
SCALE: 1:1	WEIGHT:
SHEET 1 OF 1	

REVISIONS				
ZONE	REV.	DESCRIPTION	DATE	APPROVED
ALL	D	INCORP ECO 4061 & 4040	02/02/93	
	E	ECO 4282, ADD 5250236A	06/21/95	



TABULATION		
PART NO.	"A"	"B"
5250236-03	0.800	3
5250236-04	1.000	4
5250236-05	1.200	5
5250236-06	1.400	6
5250236-07	1.600	7
5250236-08	1.800	8
5250236-09	2.000	9
5250236-10	2.200	10
5250236-11	2.400	11
5250236-12	2.600	12
5250236-13	2.800	13
5250236-14	3.000	14
5250236-15	3.200	15
5250236-16	3.400	16
5250236-17	3.600	17
5250236-18	3.800	18
5250236-19	4.000	19
5250236-20	4.200	20
5250236-21	4.400	21

TABULATION		
PART NO.	"A"	"B"
5250236-22	4.600	22
5250236-23	4.800	23
5250236-24	5.000	24
5250236-25	5.200	25
5250236-26	5.400	26
5250236-27	5.600	27
5250236-28	5.800	28
5250236-29	6.000	29
5250236-30	6.200	30
5250236-31	6.400	31
5250236-32	6.600	32
5250236-33	6.800	33
5250236-34	7.000	34
5250236-35	7.200	35
5250236-36	7.400	36
5250236-37	7.600	37
5250236-38	7.800	38
5250236-39	8.000	39
5250236-40	8.200	40
5250236-41	8.400	41
5250236-42	8.600	42

TABULATION		
PART NO.	"A"	"B"
5250236-43	8.800	43
5250236-44	9.000	44
5250236-45	9.200	45
5250236-46	9.400	46
5250236-47	9.600	47
5250236-48	9.800	48
5250236-49	10.000	49
5250236-50	10.200	50
5250236-51	10.400	51
5250236-52	10.600	52
5250236-53	10.800	53
5250236-54	11.000	54
5250236-55	11.200	55
5250236-56	11.400	56
5250236-57	11.600	57
5250236-58	11.800	58
5250236-59	12.000	59
5250236-60	12.200	60
5250236-61	12.400	61
5250236-62	12.600	62
5250236-63	12.800	63

TABULATION		
PART NO.	"A"	"B"
5250236-64	13.000	64
5250236-65	13.200	65
5250236-66	13.400	66
5250236-67	13.600	67
5250236-68	13.800	68
5250236-69	14.000	69
5250236-70	14.200	70
5250236-71	14.400	71
5250236-72	14.600	72
5250236-73	14.800	73
5250236-74	15.000	74
5250236-75	15.200	75
5250236-76	15.400	76
5250236-77	15.600	77
5250236-78	15.800	78
5250236-79	16.000	79
5250236-80	16.200	80
5250236-81	16.400	81
5250236-82	16.600	82
5250236-83	16.800	83
5250236-84	17.000	84

5250236A FINISH : GOLD IRRIDITE

- 7. DASH NO(S). INDICATE RACK SPACE IN "HP" UNITS (HOLE PITCH OF .200)
- 6. FINISH: SATIN ETCH, 7 MIN., CHEM FILM, CLEAR, CLASS 1A, IAW MIL-C-5541
- 5. DEGREASE
- 4. REMOVE ALL BURRS & SHARP EDGES
- 3. FINE GRAIN FINISH ON SURFACES INDICATED (3 PL.)
- 2. ENDS TO BE SQUARE WITHIN: .0025 PER INCH OF WIDTH
- 1. MAT'L: MAKE FROM P/N # 5280233

NOTES: UNLESS OTHERWISE SPECIFIED.

PROPRIETARY AND CONFIDENTIAL
 THE INFORMATION CONTAINED IN THIS DRAWING IS THE SOLE PROPERTY OF VECTOR ELECTRONICS & TECH., INC. ANY REPRODUCTION IN PART OR AS A WHOLE WITHOUT THE WRITTEN PERMISSION OF VECTOR ELECTRONICS & TECH., INC. IS PROHIBITED.

UNLESS OTHERWISE SPECIFIED:
 DIMENSIONS ARE IN INCHES
 TOLERANCES:
 FRACTIONAL ±
 ANGULAR: ±5°
 TWO PLACE DECIMAL ±.XX
 THREE PLACE DECIMAL ±.005
 INTERPRET GEOMETRIC TOLERANCING PER:
 MATERIAL **1**
 FINISH **6**
 DO NOT SCALE DRAWING

	NAME	DATE
DRAWN	TRUSHAR	01/12/09
CHECKED		
ENG APPR.		
MFG APPR.		
Q.A.		

THIRD ANGLE PROJECTION

VECTOR 11115 VANOWEN ST., NORTH HOLLYWOOD, CA 91605
 ELECTRONICS & TECHNOLOGY, INC.

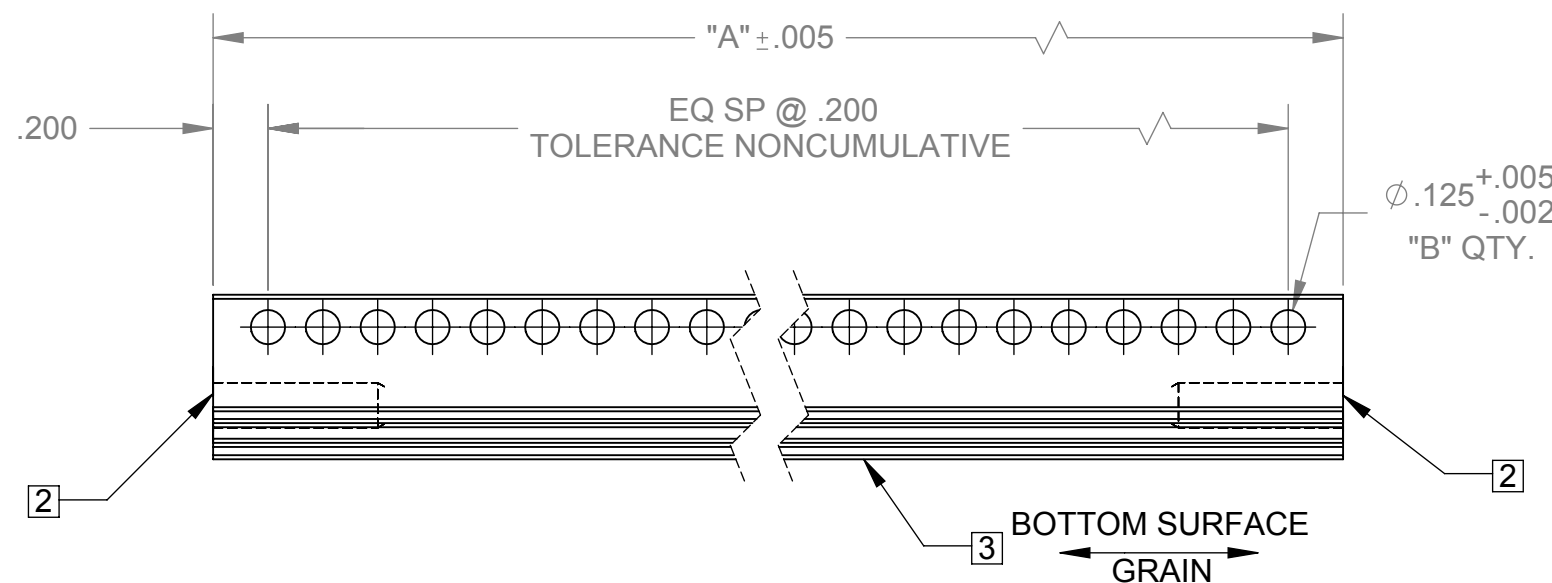
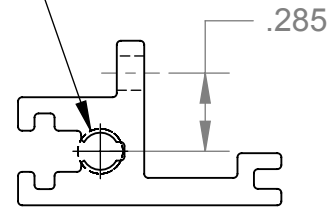
**EXTRUSION FRONT
 FULL SIZE CAGES & DIVIDER KITS**

SIZE DWG. NO.	REV
B 5250236	E

SCALE: 1:1 WEIGHT: SHEET 1 OF 1

REVISIONS				
ZONE	REV.	DESCRIPTION	DATE	APPROVED
ALL	A	PROD. REL.	05/01/86	
	B	INCORP ECO 3157	05/20/86	
	C	ECO 4283, ADD 5250238A	06/21/95	

#8-32 TAP x .600 DEEP
BOTH ENDS
NOTE: TAP THRU FOR
P/N # -03, -04, -05



TABULATION			
PART NO.	7	"A"	"B"
5250238-03		0.800	3
5250238-04		1.000	4
5250238-05		1.200	5
5250238-06		1.400	6
5250238-07		1.600	7
5250238-08		1.800	8
5250238-09		2.000	9
5250238-10		2.200	10
5250238-11		2.400	11
5250238-12		2.600	12
5250238-13		2.800	13
5250238-14		3.000	14
5250238-15		3.200	15
5250238-16		3.400	16
5250238-17		3.600	17
5250238-18		3.800	18
5250238-19		4.000	19
5250238-20		4.200	20
5250238-21		4.400	21

TABULATION			
PART NO.	7	"A"	"B"
5250238-22		4.600	22
5250238-23		4.800	23
5250238-24		5.000	24
5250238-25		5.200	25
5250238-26		5.400	26
5250238-27		5.600	27
5250238-28		5.800	28
5250238-29		6.000	29
5250238-30		6.200	30
5250238-31		6.400	31
5250238-31		6.600	32
5250238-33		6.800	33
5250238-34		7.000	34
5250238-35		7.200	35
5250238-36		7.400	36
5250238-37		7.600	37
5250238-38		7.800	38
5250238-39		8.000	39
5250238-40		8.200	40
5250238-41		8.400	41
5250238-42		8.600	42

TABULATION			
PART NO.	7	"A"	"B"
5250238-43		8.800	43
5250238-44		9.000	44
5250238-45		9.200	45
5250238-46		9.400	46
5250238-47		9.600	47
5250238-48		9.800	48
5250238-49		10.000	49
5250238-50		10.200	50
5250238-51		10.400	51
5250238-52		10.600	52
5250238-53		10.800	53
5250238-54		11.000	54
5250238-55		11.200	55
5250238-56		11.400	56
5250238-57		11.600	57
5250238-58		11.800	58
5250238-59		12.000	59
5250238-60		12.200	60
5250238-61		12.400	61
5250238-62		12.600	62
5250238-63		12.800	63

TABULATION			
PART NO.	7	"A"	"B"
5250238-64		13.000	64
5250238-65		13.200	65
5250238-66		13.400	66
5250238-67		13.600	67
5250238-68		13.800	68
5250238-69		14.000	69
5250238-70		14.200	70
5250238-71		14.400	71
5250238-72		14.600	72
5250238-73		14.800	73
5250238-74		15.000	74
5250238-75		15.200	75
5250238-76		15.400	76
5250238-77		15.600	77
5250238-78		15.800	78
5250238-79		16.000	79
5250238-80		16.200	80
5250238-81		16.400	81
5250238-82		16.600	82
5250238-83		16.800	83
5250238-84		17.000	84

5250238A FINISH: GOLD IRRIDITE

- 7. DASH NO(S). INDICATE RACK SPACE IN "HP" UNITS (HOLE PITCH OF .200)
- 6. FINISH: SATIN ETCH, 7 MIN., CHEM FILM, CLEAR, CLASS 1A, IAW MIL-C-5541
- 5. DEGREASE
- 4. REMOVE ALL BURS & SHARP EDGES
- 3. FINE GRAIN FINISH ON SURFACES INDICATED ONLY
- 2. ENDS TO BE SQUARE WITHIN: .0025 PER INCH OF WIDTH
- 1. MAT'L: MAKE FROM P/N # 5280234

NOTES: UNLESS OTHERWISE SPECIFIED.

PROPRIETARY AND CONFIDENTIAL
THE INFORMATION CONTAINED IN THIS DRAWING IS THE SOLE PROPERTY OF VECTOR ELECTRONICS & TECH., INC. ANY REPRODUCTION IN PART OR AS A WHOLE WITHOUT THE WRITTEN PERMISSION OF VECTOR ELECTRONICS & TECH., INC. IS PROHIBITED.

UNLESS OTHERWISE SPECIFIED:
DIMENSIONS ARE IN INCHES
TOLERANCES:
FRACTIONAL ±
ANGULAR: ±5°
TWO PLACE DECIMAL ±.XX
THREE PLACE DECIMAL ±.005
INTERPRET GEOMETRIC TOLERANCING PER:
MATERIAL **1**
FINISH **6**
DO NOT SCALE DRAWING

	NAME	DATE
DRAWN	TRUSHAR	01/12/09
CHECKED		
ENG APPR.		
MFG APPR.		
Q.A.		

THIRD ANGLE PROJECTION

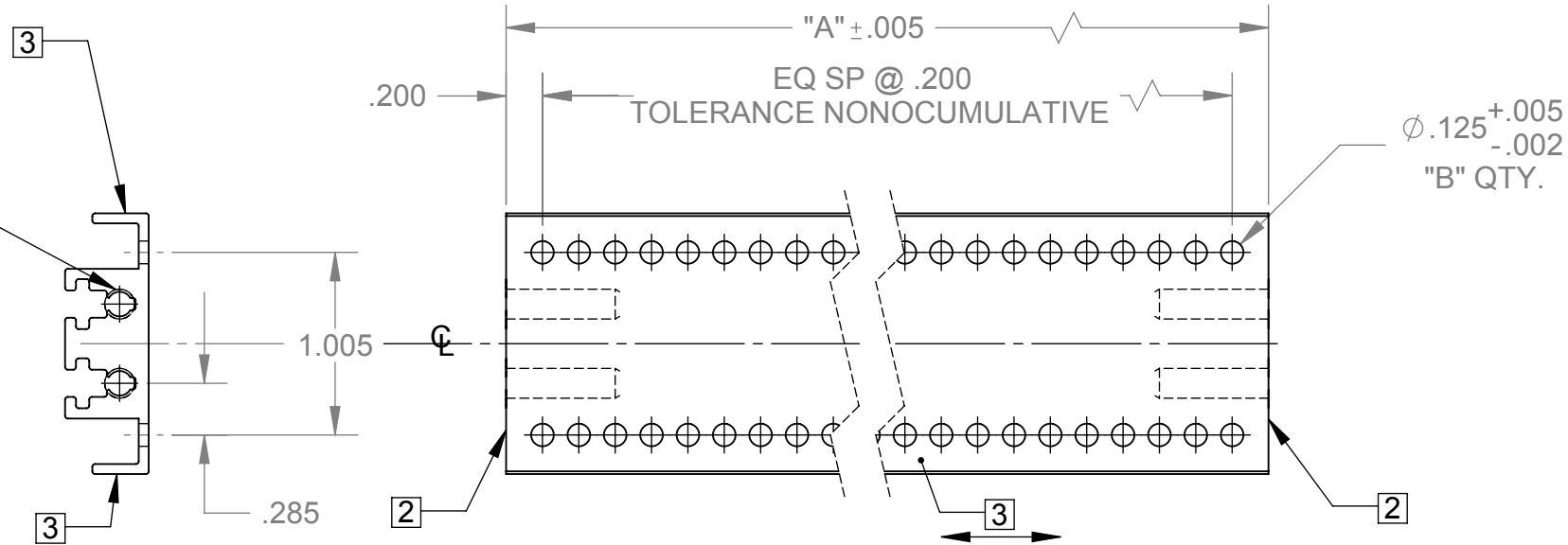
VECTOR 11115 VANOWEN ST., NORTH HOLLYWOOD, CA 91605
ELECTRONICS & TECHNOLOGY, INC

EXTRUSION REAR VME CARD CAGE

SIZE DWG. NO.	REV
B 5250238	C

SCALE: 1:1 WEIGHT: SHEET 1 OF 1

#8-32 TAP x .600 DEEP
4 PL.
NOTE: TAP THRU FOR
P/N # -03, -04, -05



REVISIONS				
ZONE	REV.	DESCRIPTION	DATE	APPROVED
ALL	B	REVISED & REDRAWN, ECO 3156	05/20/86	

TABULATION			
PART NO.	7	"A"	"B"
5250237-03		0.800	3
5250237-04		1.000	4
5250237-05		1.200	5
5250237-06		1.400	6
5250237-07		1.600	7
5250237-08		1.800	8
5250237-09		2.000	9
5250237-10		2.200	10
5250237-11		2.400	11
5250237-12		2.600	12
5250237-13		2.800	13
5250237-14		3.000	14
5250237-15		3.200	15
5250237-16		3.400	16
5250237-17		3.600	17
5250237-18		3.800	18
5250237-19		4.000	19
5250237-20		4.200	20
5250237-21		4.400	21

TABULATION			
PART NO.	7	"A"	"B"
5250237-22		4.600	22
5250237-23		4.800	23
5250237-24		5.000	24
5250237-25		5.200	25
5250237-26		5.400	26
5250237-27		5.600	27
5250237-28		5.800	28
5250237-29		6.000	29
5250237-30		6.200	30
5250237-31		6.400	31
5250237-32		6.600	32
5250237-33		6.800	33
5250237-34		7.000	34
5250237-35		7.200	35
5250237-36		7.400	36
5250237-37		7.600	37
5250237-38		7.800	38
5250237-39		8.000	39
5250237-40		8.200	40
5250237-41		8.400	41
5250237-42		8.600	42

TABULATION			
PART NO.	7	"A"	"B"
5250237-43		8.800	43
5250237-44		9.000	44
5250237-45		9.200	45
5250237-46		9.400	46
5250237-47		9.600	47
5250237-48		9.800	48
5250237-49		10.000	49
5250237-50		10.200	50
5250237-51		10.400	51
5250237-52		10.600	52
5250237-53		10.800	53
5250237-54		11.000	54
5250237-55		11.200	55
5250237-56		11.400	56
5250237-57		11.600	57
5250237-58		11.800	58
5250237-59		12.000	59
5250237-60		12.200	60
5250237-61		12.400	61
5250237-62		12.600	62
5250237-63		12.800	63

TABULATION			
PART NO.	7	"A"	"B"
5250237-64		13.000	64
5250237-65		13.200	65
5250237-66		13.400	66
5250237-67		13.600	67
5250237-68		13.800	68
5250237-69		14.000	69
5250237-70		14.200	70
5250237-71		14.400	71
5250237-72		14.600	72
5250237-73		14.800	73
5250237-74		15.000	74
5250237-75		15.200	75
5250237-76		15.400	76
5250237-77		15.600	77
5250237-78		15.800	78
5250237-79		16.000	79
5250237-80		16.200	80
5250237-81		16.400	81
5250237-82		16.600	82
5250237-83		16.800	83
5250237-84		17.000	84

- 7. DASH NO(S). INDICATE RACK SPACE IN "HP" UNITS (HOLE PITCH OF .200)
- 6. FINISH: SATIN ETCH, 7 MIN., CHEM FILM, CLEAR, CLASS 1A, IAW MIL-C-5541
- 5. DEGREASE
- 4. REMOVE ALL BURS & SHARP EDGES
- 3. FINE GRAIN FINISH ON SURFACES INDICATED (3 PL.)
- 2. ENDS TO BE SQUARE WITHIN: .0025 PER INCH OF WIDTH
- 1. MAT'L: MAKE FROM P/N # 5280220

NOTES: UNLESS OTHERWISE SPECIFIED.

PROPRIETARY AND CONFIDENTIAL
THE INFORMATION CONTAINED IN THIS DRAWING IS THE SOLE PROPERTY OF VECTOR ELECTRONICS & TECH., INC. ANY REPRODUCTION IN PART OR AS A WHOLE WITHOUT THE WRITTEN PERMISSION OF VECTOR ELECTRONICS & TECH., INC. IS PROHIBITED.

UNLESS OTHERWISE SPECIFIED:
DIMENSIONS ARE IN INCHES
TOLERANCES:
FRACTIONAL ±
ANGULAR: ±.5°
TWO PLACE DECIMAL ±.XX
THREE PLACE DECIMAL ±.005
INTERPRET GEOMETRIC TOLERANCING PER:
MATERIAL **1**
FINISH **6**
DO NOT SCALE DRAWING

	NAME	DATE
DRAWN	TRUSHAR	01/12/09
CHECKED		
ENG APPR.		
MFG APPR.		
Q.A.		

THIRD ANGLE PROJECTION

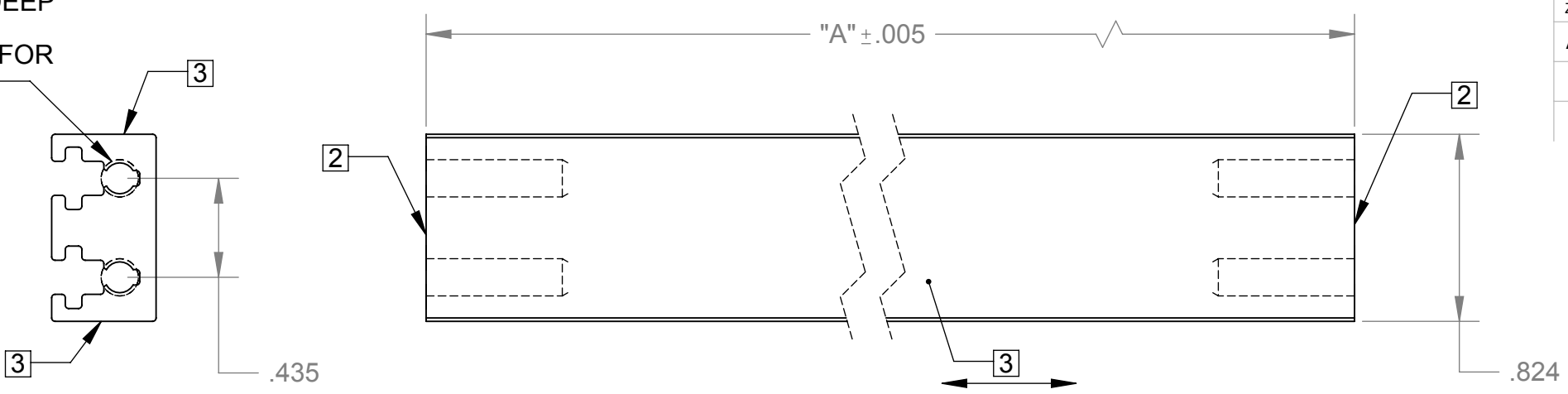
VECTOR 11115 VANOWEN ST., NORTH HOLLYWOOD, CA 91605
ELECTRONICS & TECHNOLOGY, INC

**EXTRUSION CENTER
VME CARD CAGE**

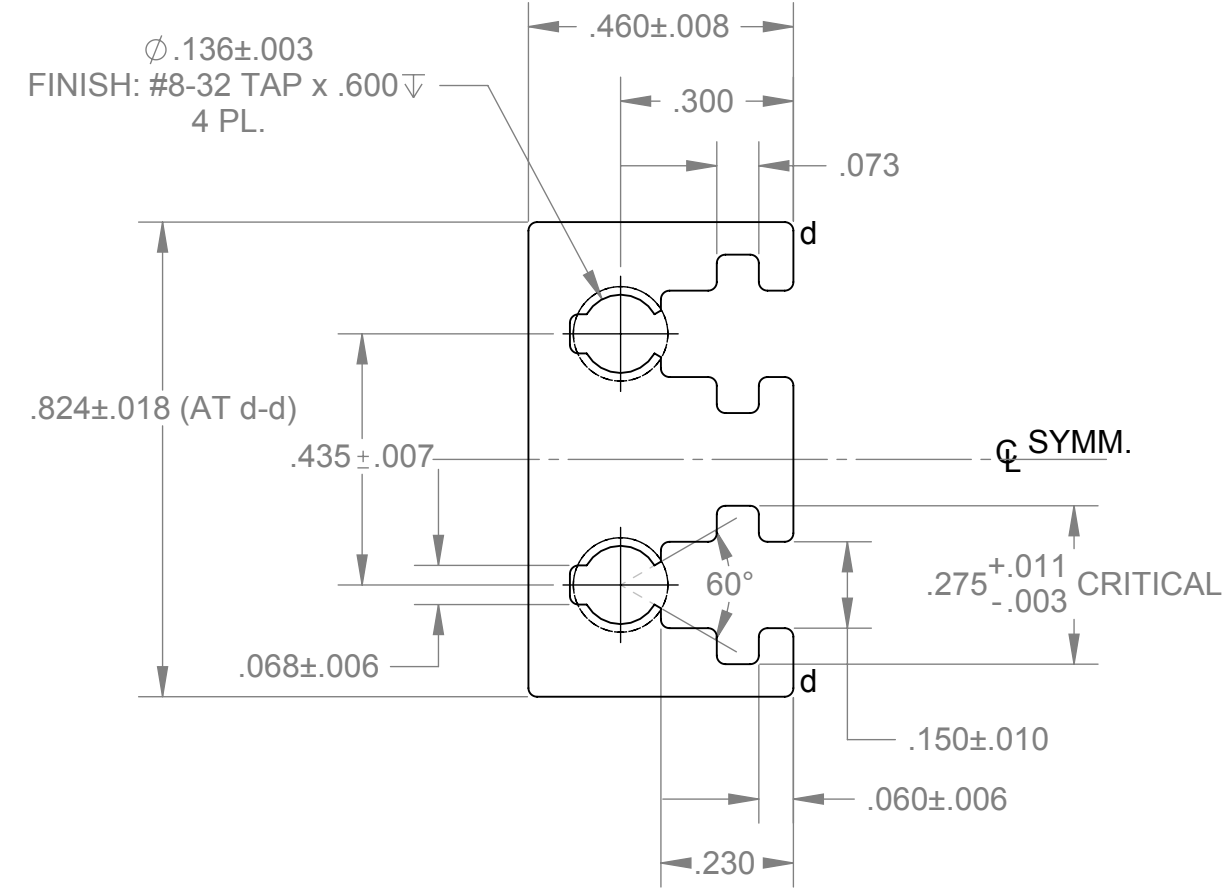
SIZE DWG. NO.	REV
B	B
5250237	

SCALE: 1:1 WEIGHT: SHEET 1 OF 1

#8-32 TAP x .600 DEEP
4 PL.
NOTE: TAP THRU FOR
P/N # -03, -04, -05



REVISIONS				
ZONE	REV.	DESCRIPTION	DATE	APPROVED
ALL	A	REVISED & REDRAWN		



TABULATION	
PART NO. [7]	"A"
5250229-03	0.800
5250229-04	1.000
5250229-05	1.200
5250229-06	1.400
5250229-07	1.600
5250229-08	1.800
5250229-09	2.000
5250229-10	2.200
5250229-11	2.400
5250229-12	2.600
5250229-13	2.800
5250229-14	3.000
5250229-15	3.200
5250229-16	3.400
5250229-17	3.600
5250229-18	3.800
5250229-19	4.000
5250229-20	4.200
5250229-21	4.400

TABULATION	
PART NO. [7]	"A"
5250229-22	4.600
5250229-23	4.800
5250229-24	5.000
5250229-25	5.200
5250229-26	5.400
5250229-27	5.600
5250229-28	5.800
5250229-29	6.000
5250229-30	6.200
5250229-31	6.400
5250229-32	6.600
5250229-33	6.800
5250229-34	7.000
5250229-35	7.200
5250229-36	7.400
5250229-37	7.600
5250229-38	7.800
5250229-39	8.000
5250229-40	8.200
5250229-41	8.400
5250229-42	8.600

TABULATION	
PART NO. [7]	"A"
5250229-43	8.800
5250229-44	9.000
5250229-45	9.200
5250229-46	9.400
5250229-47	9.600
5250229-48	9.800
5250229-49	10.000
5250229-50	10.200
5250229-51	10.400
5250229-52	10.600
5250229-53	10.800
5250229-54	11.000
5250229-55	11.200
5250229-56	11.400
5250229-57	11.600
5250229-58	11.800
5250229-59	12.000
5250229-60	12.200
5250229-61	12.400
5250229-62	12.600
5250229-63	12.800

TABULATION	
PART NO. [7]	"A"
5250229-64	13.000
5250229-65	13.200
5250229-66	13.400
5250229-67	13.600
5250229-68	13.800
5250229-69	14.000
5250229-70	14.200
5250229-71	14.400
5250229-72	14.600
5250229-73	14.800
5250229-74	15.000
5250229-75	15.200
5250229-76	15.400
5250229-77	15.600
5250229-78	15.800
5250229-79	16.000
5250229-80	16.200
5250229-81	16.400
5250229-82	16.600
5250229-83	16.800
5250229-84	17.000

- 7. DASH NO(S). INDICATE RACK SPACE IN "HP" UNITS (HOLE PITCH OF .200)
- 6. FINISH: SATIN ETCH, 7 MIN., CHEM FILM, CLEAR, CLASS 1A, IAW MIL-C-5541
- 5. DEGREASE
- 4. REMOVE ALL BURS & SHARP EDGES
- 3. FINE GRAIN FINISH ON SURFACES INDICATED (3 PL.)
- 2. ENDS TO BE SQUARE WITHIN: .0025 PER INCH OF WIDTH
- 1. MAT'L: MAKE FROM P/N # 5280220

NOTES: UNLESS OTHERWISE SPECIFIED.

PROPRIETARY AND CONFIDENTIAL
THE INFORMATION CONTAINED IN THIS DRAWING IS THE SOLE PROPERTY OF VECTOR ELECTRONICS & TECH., INC. ANY REPRODUCTION IN PART OR AS A WHOLE WITHOUT THE WRITTEN PERMISSION OF VECTOR ELECTRONICS & TECH., INC. IS PROHIBITED.

UNLESS OTHERWISE SPECIFIED:
DIMENSIONS ARE IN INCHES
TOLERANCES:
FRACTIONAL ±
ANGULAR: ± 5°
TWO PLACE DECIMAL ± .XX
THREE PLACE DECIMAL ± .005
INTERPRET GEOMETRIC TOLERANCING PER:
MATERIAL [1]
FINISH [6]
DO NOT SCALE DRAWING

NAME	DATE
DRAWN TRUSHAR	01/12/09
CHECKED	
ENG APPR.	
MFG APPR.	
Q.A.	

THIRD ANGLE PROJECTION

VECTOR 11115 VANOWEN ST., NORTH HOLLYWOOD, CA 91605
ELECTRONICS & TECHNOLOGY, INC.

EXTRUSION CENTER NARROW VME CARD CAGE

SIZE DWG. NO. **B** **5250229** REV **A**

SCALE: 1:1 WEIGHT: SHEET 1 OF 1