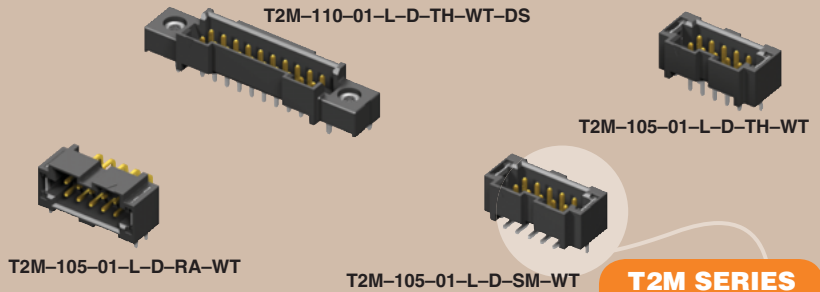




(2,00 mm) .0787"



T2M SERIES

HIGH RELIABILITY CABLE HEADER

SPECIFICATIONS

For complete specifications and recommended PCB layouts see www.samtec.com?T2M

Insulator Material: Black Liquid Crystal Polymer

Terminal Material: Phosphor Bronze

Plating: Sn or Au over 50µ" (1,27 µm) Ni

Current Rating (T2M/S2SD): 3.8 A per pin (1 pin powered per row)

Operating Temp Range: -55°C to +105°C with Tin; -55°C to +125°C with Gold

RoHS Compliant: Yes

Processing: Lead-Free Solderable: Yes

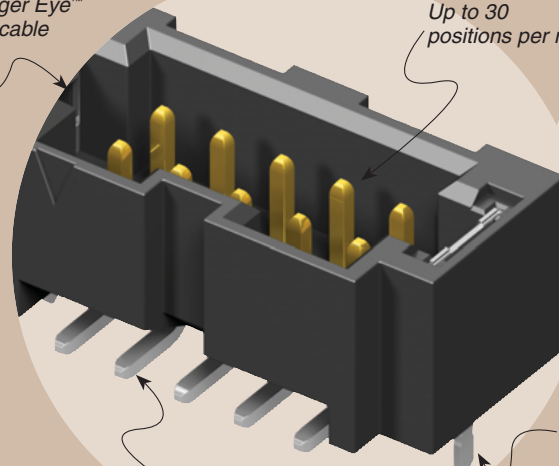
SMT Lead Coplanarity: (0,10 mm) .004" max

Mates with: S2SD, S2M, S2SDT



Mates with Tiger Eye™ discrete wire cable assemblies

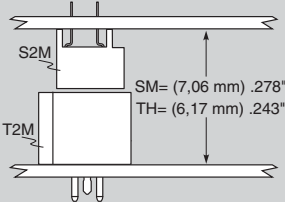
Up to 30 positions per row



Optional weld tab

Choice of Surface Mount, Through-hole or Right Angle

MATED HEIGHT



RECOGNITIONS

For complete scope of recognitions see www.samtec.com/quality



05, 07, 10, 15, 20, 25, 30 (Per Row)

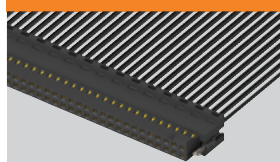
-L = 10µ" (0,25 µm) Gold on contact, Matte Tin on tail

-TH = Through-hole
-RA = Right Angle
-SM = Surface Mount

-WT = Weld Tab (S2SD & S2SDT, -SR/-DR required mate)
-DS = Screw Down (N/A with -RA) (mates with -S2M-DS, S2SD/S2SDT -SS/-DS option)
-K = (7,50 mm) .295" DIA Polyimide film Pick & Place Pad (-SM only)
-TR = Tape & Reel (-SM only)



OTHER SOLUTIONS

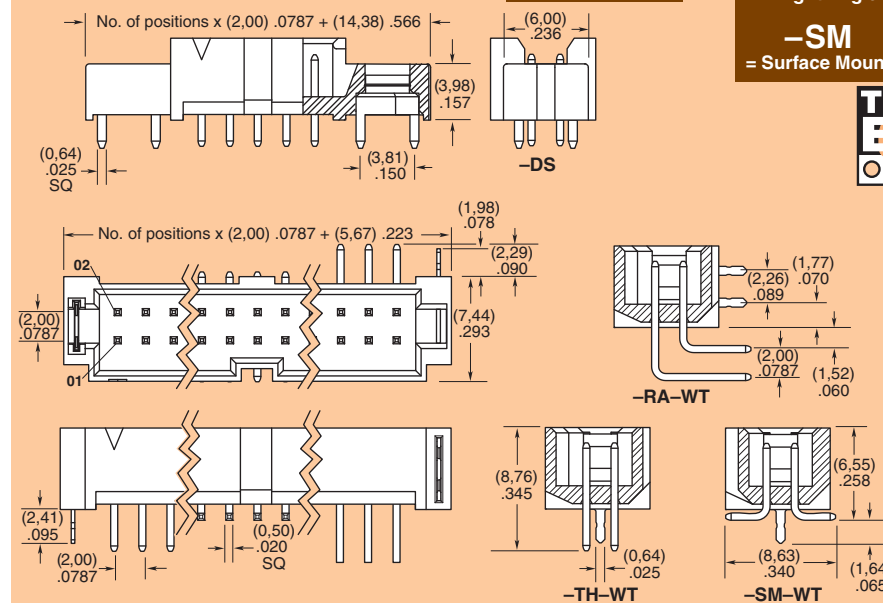


See S2SD in the discrete wire section or contact Samtec.

ALSO AVAILABLE (MOQ Required)

- Other platings Contact Samtec.

Note: Some lengths, styles and options are non-standard, non-returnable.



Due to technical progress, all designs, specifications and components are subject to change without notice.

WWW.SAMTEC.COM