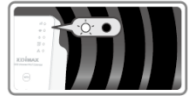




Eliminate Wi-Fi Dead Zones



Smart App Control for iOS & Android Phones



Signal LED indicator



Easy Browser-Based Setup, No CD Required

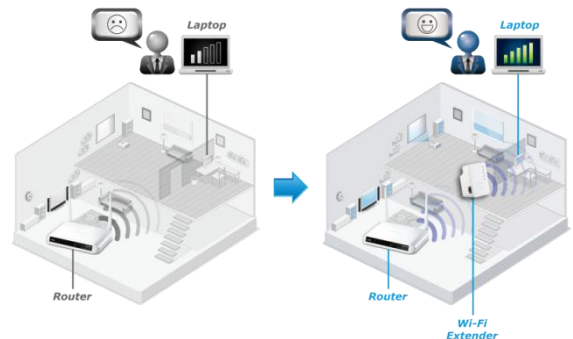
**EW-7438RPn Mini**

## N300 Mini Wi-Fi Extender/Access Point/Wi-Fi Bridge

The Edimax EW-7438RPn Mini Wi-Fi Extender is a Wi-Fi extender with built-in power adapter in a compact design which can be plugged directly into an electrical outlet. The ES-7438RPn Mini comes with an intuitive iOS & Android smartphone companion app for controlling the Wi-Fi schedule and guest network. Convenient placement allows you to increase the signal coverage of your Wi-Fi network for better Wi-Fi quality. Featuring smart iQ Setup, installation is quick and easy and the EW-7438RPn Mini features 3-in-1 Wi-Fi extender, access point or wireless bridge operating modes. Just configure the mode you need for your network environment. Additionally, it complies with wireless 802.11b/g/n standards and provides data transmission rates of up to 300Mbps. With the Edimax EW-7438RPn Mini, you can enjoy high-speed wireless networking throughout your home without additional cabling.

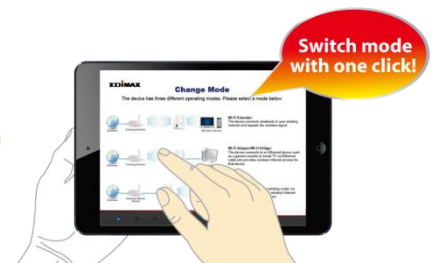
### Eliminate Wi-Fi Dead Zones & Double The Wi-Fi Coverage With Ease

Plug the extender directly into an electrical outlet and the Edimax EW-7438RPn Mini can easily extend Wi-Fi coverage to dead zones which your existing Wi-Fi signal can't reach and increase the signal coverage of your Wi-Fi network for better Wi-Fi quality.



### Smart 3-in-1 Extender, Access Point And Wireless Bridge

The EW-7438RPn Mini can work as Wi-Fi extender, access point or wireless bridge. Just configure the mode you need for your network environment using the smart iQ Setup wizard and enjoy surfing the web.



### Smart App Control & Analytics

The extender works together with our free EdiRange smartphone app which displays your local Wi-Fi environment and provides easy-to-understand analytics. Plus you can manage the extender's wireless network and functions such as scheduling and guest network.



# N300 Mini Wi-Fi Extender/Access Point/Wi-Fi Bridge

EW-7438RPn Mini

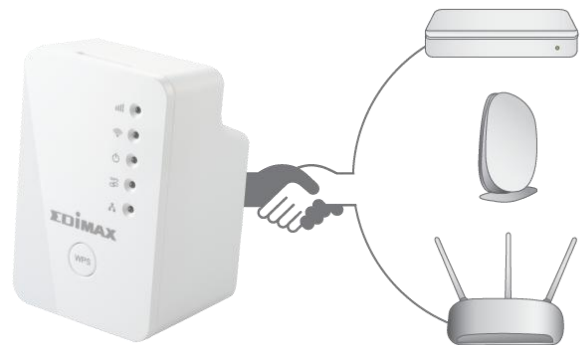
## Compact, Slim Wall Plug Design

**Plugs directly into an existing electrical socket – no need for an additional power cable.** Not only is the Edimax EW-7438RPn Mini slim and compact, it is designed with a built-in power adapter. This allows you to plug it directly into an electrical outlet, eliminating the need for an additional power cable. You can easily install it where your Wi-Fi signal needs enhancement and enjoy high-speed wireless performance without any hassles.



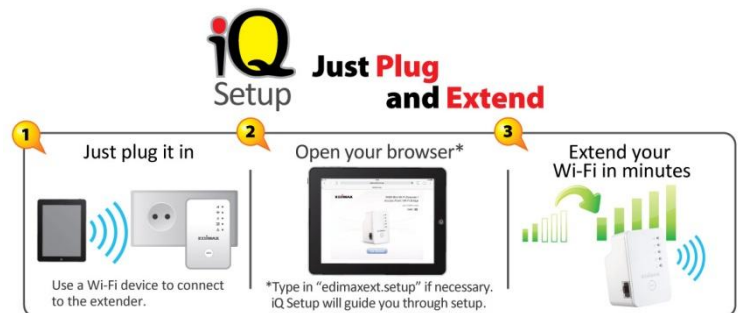
## Works With Any Wireless Router

Universal compatibility and easy web-based iQ Setup for quick and easy installation.



## Smart iQ Setup

Features user-friendly browser-based iQ Setup for smart, automatic and quick installation. iQ Setup automatically detects the available Wi-Fi networks nearby and helps you establish a connection within seconds.



## Quick And Easy WPS Installation

A WPS (Wi-Fi Protected Setup) button allows the EW-7438RPn Mini to join an existing wireless networking at the simple push of a button.

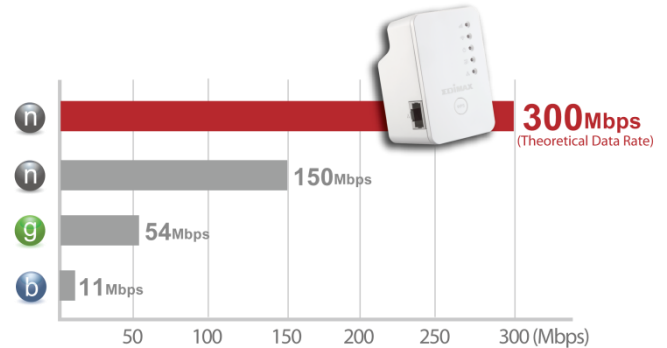


# N300 Mini Wi-Fi Extender/Access Point/Wi-Fi Bridge

EW-7438RPn Mini

## Wireless 802.11n Standard (Data Rates Up To 300Mbps)

802.11n technology is built into the EW-7438RPn Mini to broaden its wireless coverage and eliminate dead spots within wireless range. The EW-7438RPn Mini is also backward compatible with wireless 802.11b/g/n standards and can reach data transmission rates of up to 300Mbps when connected to wireless 802.11n devices, providing faster and more reliable wireless connections than standard 802.11b/g wireless networks.



802.11n VS 802.11b/g Data Transmission Rates

## Wi-Fi Scheduling\*

The Wi-Fi scheduling function lets you program intelligent schedules to manage Wi-Fi availability and power usage according to your home's routine. (\*Wi-Fi extender mode only)



## Guest Network\*

The EW-7438RPn Mini also features a guest wireless network which could be used for visitor and keep your home Wi-Fi private and secure. (\*Wi-Fi extender mode only)

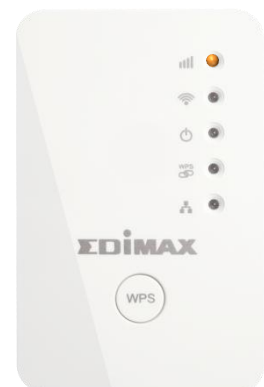


## Signal Strength LED Indicator

Designed with a signal strength LED which helps you find the best setup location for optimal Wi-Fi coverage.

## Signal Strength LED

- ☺ On: Excellent Signal
- 😊 Flashing: Good Signal
- 😬 Flashing Rapidly: Poor Signal
- ☹ Off: No Signal



Install the extender where the signal strength LED is on (but not flashing) for optimal Wi-Fi performance.

# N300 Mini Wi-Fi Extender/Access Point/Wi-Fi Bridge

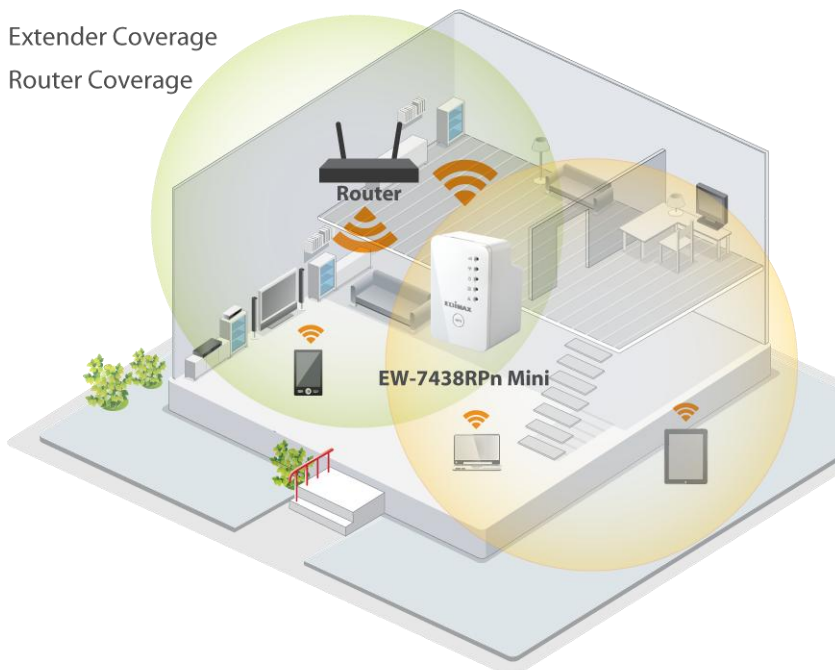
**EW-7438Rpn Mini**

**TECHNICAL SPECIFICATIONS**

FREQUENCY BAND	WIRELESS STANDARDS & DATA RATES	HARDWARE INTERFACE
<ul style="list-style-type: none"> <li>2.4GHz</li> </ul>	<ul style="list-style-type: none"> <li>IEEE 802.11n (up to 300Mbps)</li> <li>IEEE 802.11g (up to 54Mbps)</li> <li>IEEE 802.11b (up to 11Mbps)</li> </ul>	<ul style="list-style-type: none"> <li>1 x 10/100Mbps Ethernet LAN port</li> <li>WPS button</li> <li>LEDs: Signal strength, wireless, power, WPS, LAN</li> </ul>
MANAGEMENT	SECURITY	SYSTEM REQUIREMENTS
<ul style="list-style-type: none"> <li>16-language user interface</li> <li>Firmware Upgradable</li> </ul>	<ul style="list-style-type: none"> <li>64/128-bit WEP encryption and WPA-PSK, WPA2-PSK security</li> <li>WPS (Wi-Fi Protected Setup)</li> <li>User access control (MAC address)</li> </ul>	<ul style="list-style-type: none"> <li>Existing wireless home network (2.4GHz) for Range extender/ Wireless bridge mode, or Cable/DSL modem router for access point mode</li> <li>Computer with 2.4GHz b/g/n Wi-Fi capability and web browser for software configuration (Internet Explorer®, Google Chrome®, Firefox® or Safari® latest version)</li> <li>iOS 5 above or Android 4.x above for mobile app</li> </ul>
INSTALLATION	ANTENNA	POWER ADAPTER
<ul style="list-style-type: none"> <li>Multi-language iQ Setup (browser interface)</li> <li>Hardware WPS button</li> </ul>	<ul style="list-style-type: none"> <li>2 x internal antennas</li> </ul>	<ul style="list-style-type: none"> <li>Built-in AC100-240V, 50-60Hz power module</li> </ul>
HUMIDITY & TEMPERATURE	DIMENSIONS & WEIGHT	CERTIFICATIONS
<ul style="list-style-type: none"> <li>10-90% (Non-condensing)</li> <li>0-40°C (32-104°F)</li> </ul>	<ul style="list-style-type: none"> <li>65 (H) x 42 (W) x 38 (L) mm</li> <li>EU Plug type: 70g</li> <li>UK Plug type: 72g</li> <li>US Plug type: 64g</li> </ul>	<ul style="list-style-type: none"> <li>FCC, CE</li> </ul>

**APPLICATION DIAGRAM**

- Extender Coverage
- Router Coverage



**Access Point** Create Wi-Fi access for any existing wired network.

**Wi-Fi Extender** Extend existing Wi-Fi for further coverage.

**Wi-Fi Bridge** Let wired TVs, game consoles or media players join your wireless network.



Maximum performance, actual data rates, and coverage will vary depending on network conditions and environmental factors. Product specifications and design are subject to change without notice. Copyright © 2014 Edimax Technology Co. Ltd. All rights reserved. www.edimax.com