

# GP Batteries

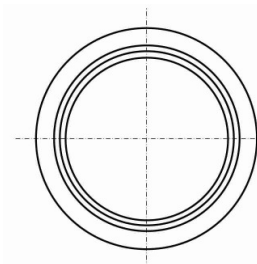
## DATA SHEET

Description	: Flat Lithium Battery
Chemical system	: Lithium Manganese Dioxide
Nominal voltage	: 3 Volts
Nominal capacity	: 300mAh@6.8kΩ to 2.5V
Dimensions	: ø24.5 x 3.0mm
Shelf life	: 5 years at room temperature
Average weight	: 4 grams
Application	: Watch, calculator, camera and memory back up

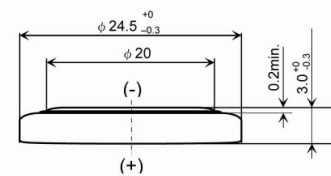
### Cross References:

IEC	JIS	Eveready	Varta	Duracell
CR2430	CR2430	ECR2430	CR2430	DL2430

Model No.: **CR2430**

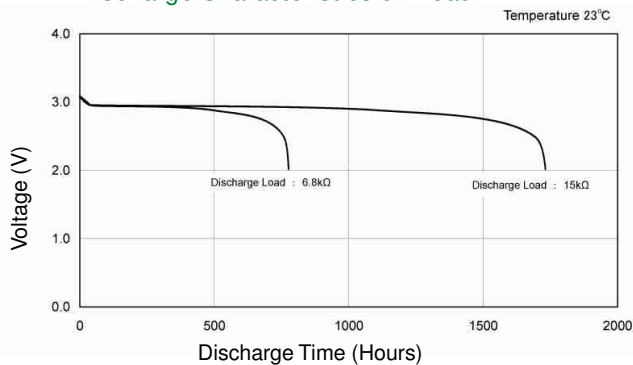


Diameter: 24.5mm  
Height: 3.0mm

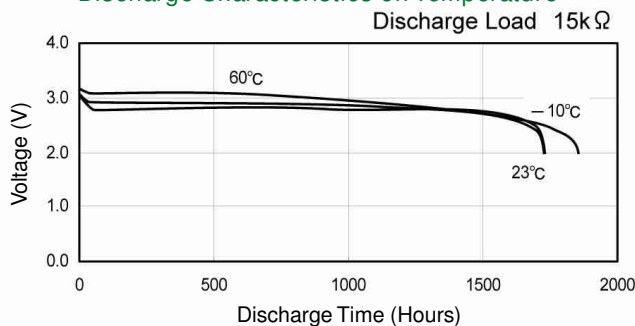


**Dimension Drawing**

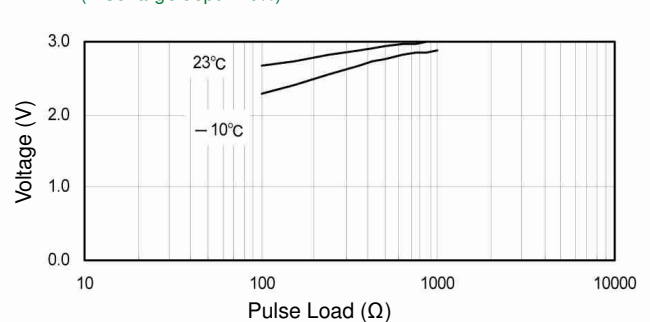
### Discharge Characteristics on Load



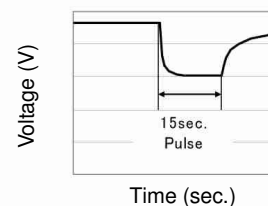
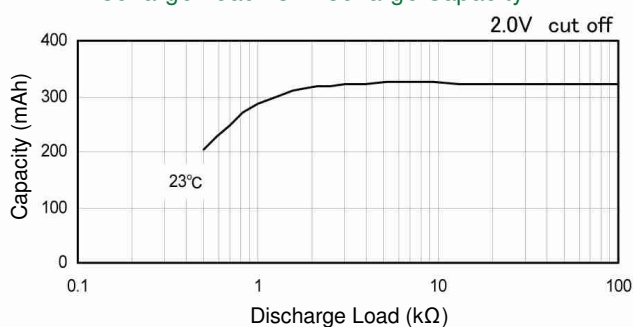
### Discharge Characteristics on Temperature



### Discharge Characteristics on Pulse Load




### Discharge Load vs. Discharge Capacity



The information (subject to change without prior notice) contained in this document is for reference only and should not be used as a basis for product guarantee or warranty. For applications other than those described here, please consult your nearest GP Sales and Marketing Office or Distributors.

[www.gpbatteries.com](http://www.gpbatteries.com)

Manufacturer reserves the right to alter or amend the design, model and specification without prior notice.  
Copyright© GPI International Ltd. - All rights reserved

 Member  
Gold Peak Group

09060106312