



OFFLINE: LEAVE A MESSAGE »

Call: 1-800-989-1422

Contact (/customer-resources/) About Us (/about-us.asp)

<a href="#">Quick Ship (/quick-ship/)</a>	<a href="#">Workstations</a>	<a href="#">Benches &amp; Tables</a>	<a href="#">Packaging Stations</a>	<a href="#">Shelving/Accessories</a>	<a href="#">Storage/Carts</a>
<a href="#">Customer Resources</a>	<a href="http://labs.iacindustries.com">Labs (http://labs.iacindustries.com)</a>				

Home (/) : Catalog (/workbench/workbench-catalog.asp) : Quick Ship Products : QS Dimension 4 Workstations

## QS Dimension 4 Workstations

[Live Configurator \(/configurator/dimension-4/\)](#)



<b>Product Information</b>	<a href="#">Warranty</a>	<a href="#">Quality Commitment</a>	<a href="#">Total Cost of Ownership</a>
----------------------------	--------------------------	------------------------------------	---

Dimension 4 Workstations are the most versatile and useful workstation modules available. The system easily expands to meet growing needs through the addition of accessories and more modules. Our "Basic" units are available in Single-Sided or Double-Sided configurations and are fully adjustable, enabling each worker to set up footrests, shelving, worksurface and other components for personal comfort and efficiency. And, with their intelligent design, Dimension 4 workstations can be quickly reconfigured any time your requirements change.

Modularity

UL Listed -

Ergonomic Design

ESD Models

### Dimensions

Standard Lengths: 60", 72"  
 Standard Depth: 30"  
 Standard Height: 72"

Maximum Load: 750 lbs.

[Specification Questionnaire \(/get-started/specification-questionnaire.asp\)](#)

As with all IAC products, Dimension 4 components are ergonomically designed to ensure maximum worker safety, improved efficiency and greater productivity. By ordering the basic unit in the size that fits your needs, you will receive two uprights and two worksurface assemblies with 180° rolled front edges. ESD worksurfaces and options are also available.



### Build Your Custom Quote in 3 Easy Steps:

1. Select your desired length (48", 60", 72", 96") and surface (ESD/standard).
2. Click the image tiles below to see all available options.
3. Add items to the Quote Builder (top right) by clicking the Add (+) buttons.

### Main Components for QS Dimension 4 Workstations



Single Sided Starter Unit



Single Sided Add-on Unit

[Sign In](#)

Primary Length:  All  48"  60"  72"  96" | Laminate/Fabric:  All  Standard Only  ESD Only

**Quote Builder**

**Drawers, Accessories and Additional Options**

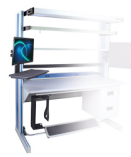
**Cart Empty**



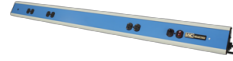
**Drawers**



**12" Shelving**



**Computer Accessories**



**Electrical Channel**

Send Quote Request  
(/workbench/quoteRequest.asp)

**12" Shelving**



The adjustable shelves can be specified with either standard and ESD laminate surface. Weight capacity of the standard shelf is 75 lbs. evenly distributed. Shelves are UL Listed structural components.

Adjustable Height  
Available in two lengths

U.L. Listed  
Powder Coat Paint Color: Textured Gray  
Laminate: Dove Gray (Standard); Gray (ESD)

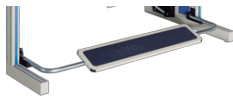
Standard Versions			
Workstation Length	Depth	Part Number	RFQ
60"	12"	QS-2011922	<b>+</b>
72"	12"	QS-2011932	<b>+</b>

ESD Versions			
Workstation Length	Depth	Part Number	RFQ
60"	12"	QS-2011962	<b>+</b>
72"	12"	QS-2011972	<b>+</b>

**✕ Close**



**Light Fixture**



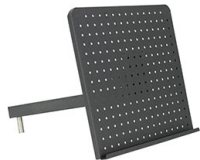
**Upright Mounted Footrests**



**Parts Cup Rack**



**Parts Cup Rail**



**Swing Arm Pegboard**



**Tool Trolley**