

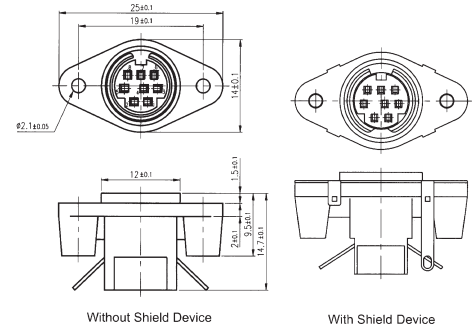
G18DR Mini-DIN Receptacle Panel Mount Housing

Materials

- Housing – 94V-0 thermoplastic
- Shield – Carbon steel
- Shield Plating – 100µ" Tin/lead

Related Information

- Socket Contact – G18DC see below
- Mating Half – Page C-14



Part Number System:

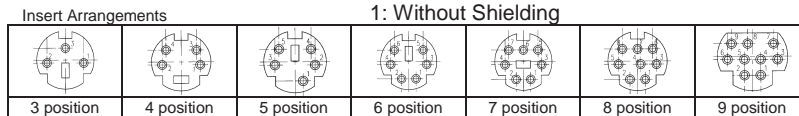


VARIATION CODE
Blank: Standard

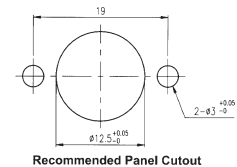
NUMBER OF POSITIONS

- 03: 3 Position
- 04: 4 Position
- 05: 5 Position
- 06: 6 Position
- 07: 7 Position
- 08: 8 Position

SHIELDING OPTION
0: With Shielding
1: Without Shielding



MDIN-G18DRXX0-06 Rev.A



G18DC Mini-DIN Crimp Socket Contacts for G18DR

Materials

- Contact – P/B with 50µ" Ni

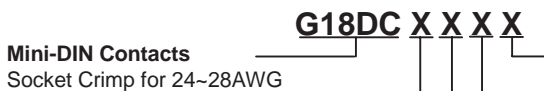
Electrical

- Current – 1.5A
- Voltage – 250VAC/rms 60Hz

Durability

- Gold Flash – 75 cycles
- 15µ" Gold – 125 cycles
- 30µ" Gold – 250 cycles
- 100µ" Tin/lead – 200 cycles

Part Number System:



VARIATION CODE
Blank: Standard

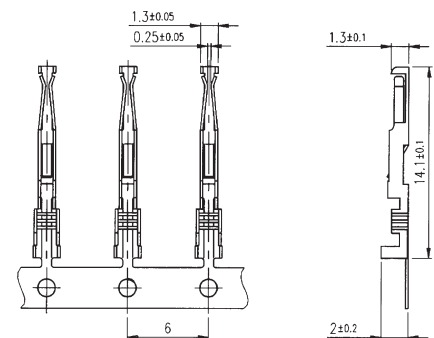
CONTACT FINISH

- 0: Gold Flash
- 1: 30µ" Gold
- 3: 15µ" Gold
- 5: 100µ" Tin/Lead

PACKING OPTION
3: Reel of 5,000
4: Reel of 10,000

MDIN-G18DCXX-06 Rev.A

PACKING STYLE
1: Right Hand Feed
2: Left Hand Feed



G18H Mini-DIN Dual Port R/A PCB Mount Receptacle

Materials

- Housing – 94V-0 thermoplastic
- Shield – Carbon steel
- Shield Plating – 100µ" Tin/lead
- Contact – P/B with 50µ" Ni

Electrical

- Current – 1.5A
- Voltage – 250VAC/rms 60Hz

Durability

- Gold Flash – 75 cycles
- 15µ" Gold – 125 cycles
- 30µ" Gold – 250 cycles
- 100µ" Tin/lead – 200 cycles

Related Information

- Mating Half – C-14
- Inserts – See above

Part Number System:



BOARDLOCK OPTIONS

- 0: None
- 1: Centre Arrowhead only
- 2: Side Boardlock only
- 3: Both Centre & Side Locks

NUMBER OF POSITIONS TOP

NUMBER OF POSITIONS BOTTOM

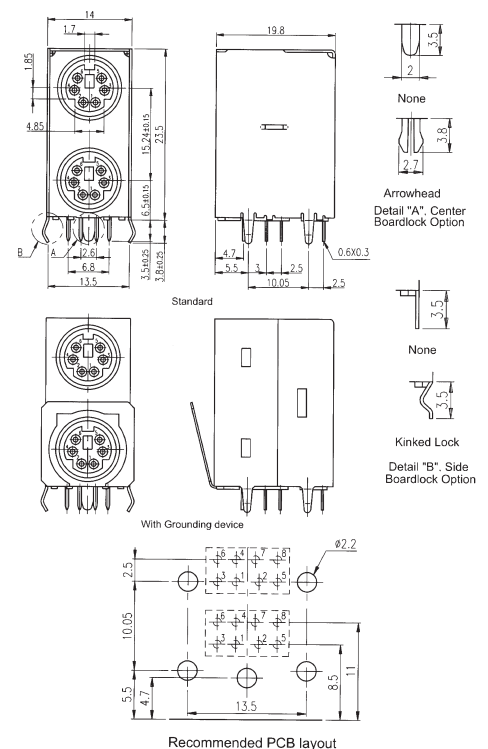
- 3: 3 Position
- 4: 4 Position
- 5: 5 Position
- 6: 6 Position
- 7: 7 Position
- 8: 8 Position
- 9: 9 Position

CONTACT FINISH

- 0: Gold Flash
- 1: 1: 30µ" Gold
- 3: 3: 15µ" Gold
- 5: 100µ" Tin/Lead

GROUNDING OPTION

- 0: Standard
- 1: With Grounding



PNS-18H Rev.A / MDIN-G18H661X2-06 Rev.A

For further variations and information, consult representative

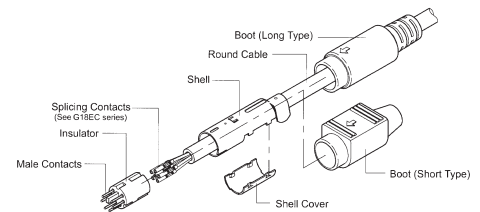
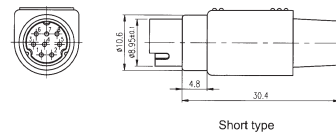
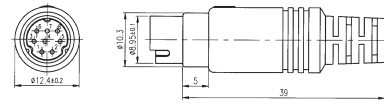
G18E Mini-DIN Plug Cable Mount Assembly

Materials

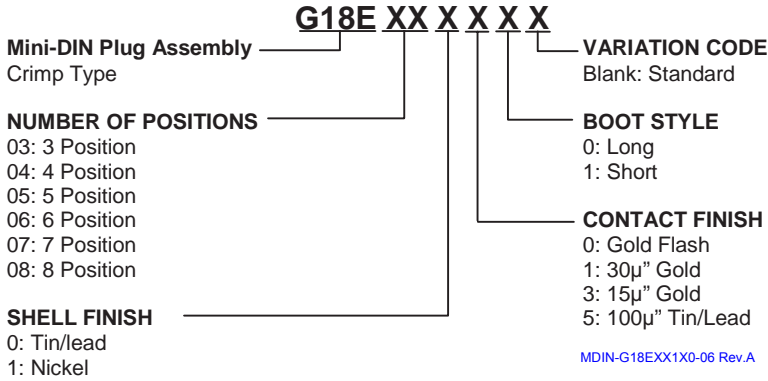
Housing	- 94V-0 thermoplastic
Shell	- Carbon steel 50µ" Ni
Boot	- 94V-0 PVC

Related Information

Splicing Contact	- G18EC see below
Mating Half	- Page C-13 & below
Inserts	- C-13



Part Number System:



G18EC Mini-DIN Crimp Splice Contacts for G18E

Materials

Contact	- P/B with 50µ" Ni
---------	--------------------

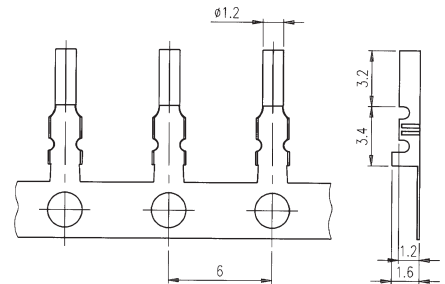
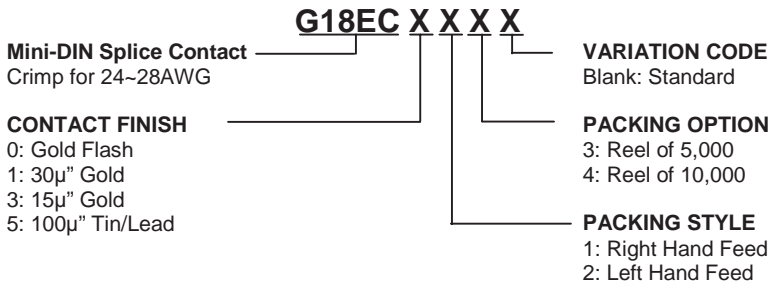
Electrical

Current	- 1.5A
Voltage	- 250VAC/rms 60Hz

Durability

Gold Flash	- 75 cycles
15µ" Gold	- 125 cycles
30µ" Gold	- 250 cycles
100µ" Tin/lead	- 200 cycles

Part Number System:



G18 Mini-DIN R/A PCB Mount Receptacle

Materials

Housing	- 94V-0 thermoplastic
Shield	- Carbon steel
Shield Plating	- 100µ" Tin/lead
Contact	- P/B with 50µ" Ni

Electrical

Current	- 1.5A
Voltage	- 250VAC/rms 60Hz

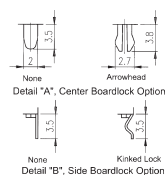
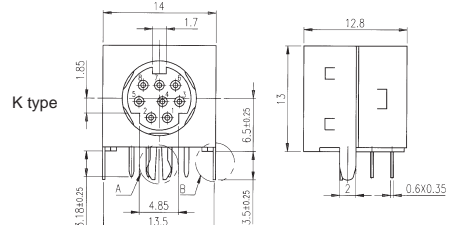
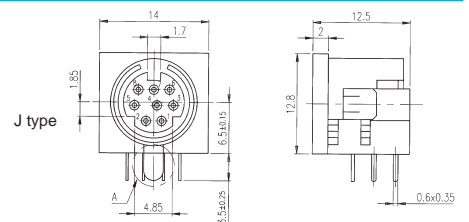
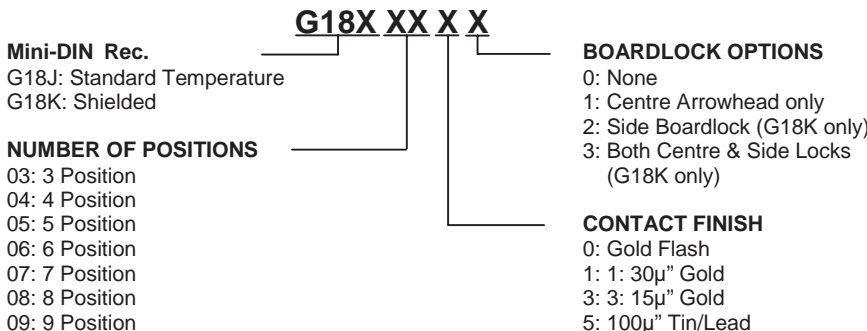
Durability

Gold Flash	- 75 cycles
15µ" Gold	- 125 cycles
30µ" Gold	- 250 cycles
100µ" Tin/lead	- 200 cycles

Related Information

Mating Half	- See above
Inserts	- C-13

Part Number System:



PNS-18J Rev.A/PNS-18K Rev.C /MDIN-G18JXXX1-1-06 Rev.A/MDIN-G18KXXX-06 Rev.A

For further variations and information, consult representative