

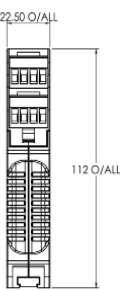
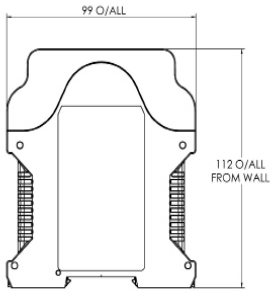
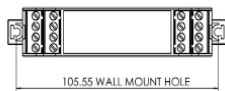
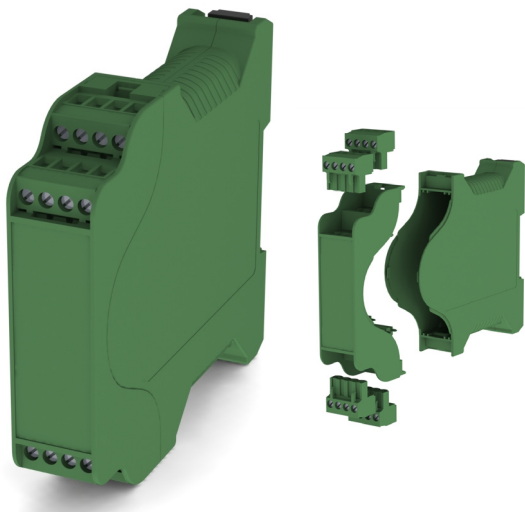
# DIN RAIL BOXES

## CVB-PLUS

- 22.5mm wide Vertical DIN Rail Mount Housing
- Clip together design for fast assembly
- Supplied with four 4-pole 5mm pitch pluggable terminal blocks
- Moulded in UL94-V0, PA66
- Front and side label recesses
- Solid and vented versions available
- Top Hat 35mm DIN Rail or Surface Mounting

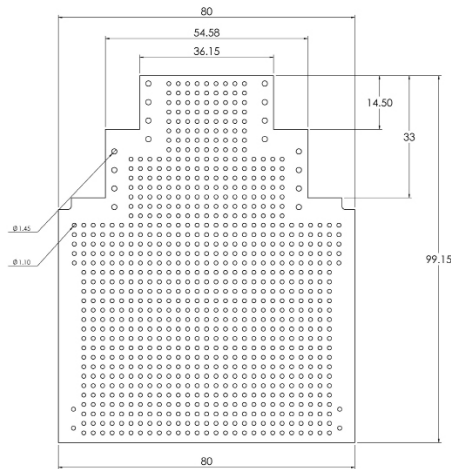
SPECIFICATION	
Rating Terminals	15A 300V
Contact resistance	20mΩ
Insulation resistance	500mΩ/DC500V
Withstand voltage	AC2000V/1min
Materials: Pin header	Brass, tin plated
Housing	PA66, UL94-V0

TYPE NO.	DESCRIPTION	SIZE
CVB-PLUS1	Solid sides	112mm x 22.5mm x 99mm
CVB-PLUS1V	Vented Sides	112mm x 22.5mm x 99mm



## CVB-PLUS PCB

TYPE NO.	DESCRIPTION	SIZE
CVB-PLUS-PCB	PCB	80mm x 99.2mm x 1.6mm



UNIVERSAL  
ENCLOSURES

HAND  
HELD  
CASES

HEAVY  
DUTY  
ENCLOSURES

DIN  
RAIL  
BOXES

INTERFACE  
SUPPORTS

CONTROL  
STATIONS

DIECAST  
& METAL  
BOXES

DESKTOP &  
INSTRUMENT  
CASES

POTTING  
BOXES

19"  
ENCLOSURES

19"  
CABINETS

DEVELOPMENT  
BOARD  
ENCLOSURES

CUSTOM  
SIZED  
ENCLOSURES

CUSTOM  
SERVICES



+44 (0)1638 716101  
info@camdenboss.com  
www.camdenboss.com

We operate a constant improvement policy,  
our products are subject to change without notice.

Ver 1.0

