

DIN RAIL BOXES

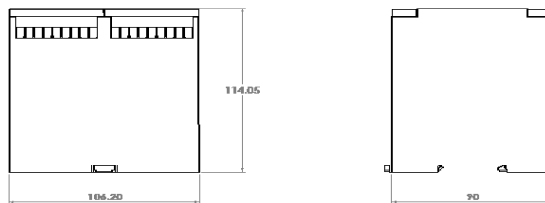
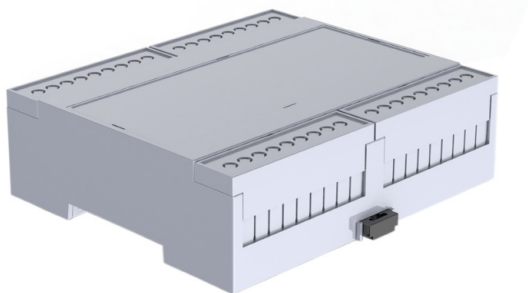
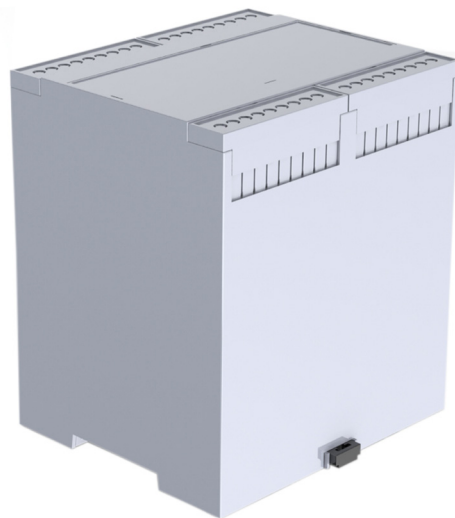
DIN Rail Instrument Boxes

Low Profile and Deep Profile DIN Rail Mount Instrument Boxes

- Designed for 35mm DIN Rail Mounting
- DIN Clips can also be used for surface mounting the housing
- Multiple snap-in PCB positions available (horizontal & vertical)
- X2 pillars in the base for screw fixing PCB
- Snap-fit Top Covers (See CNMB)
- Snap-fit Terminal Guards (See CNMB)
- Open Top and Solid Top versions available
- Low Profile and Deep Profile variants
- Enclosure base offers isolation from DIN rail
- Customisation options include cutouts, holes & vents
- Surfaces, Covers and Terminal guards easily customised and printed
- Moulded in UL94-V0 Polycarbonate

SPECIFICATION

Material	Base & Body- UL94-V0, Polycarbonate Clips- POM
Standard colours	RAL 7035
Standard unit includes	Body, base & clips
Accessories	Terminal Guards and Covers (See CNMB)



PART NO.	DESCRIPTION
CDIB/6/L2	CDIB, Size 6, Low Profile, Open Top, Open Sides
CDIB/6ST/L2	CDIB, Size 6, Low Profile, Solid Top, Open Sides
CDIB/6/D2	CDIB, Size 6, Deep Profile, Open Top, Open Sides
CDIB/6ST/D2	CDIB, Size 6, Deep Profile, Solid Top, Open Sides

UNIVERSAL ENCLOSURES

HAND HELD CASES

HEAVY DUTY ENCLOSURES

DIN RAIL BOXES

INTERFACE SUPPORTS

CONTROL STATIONS

DIECAST & METAL BOXES

DESKTOP & INSTRUMENT CASES

POTTING BOXES

19" ENCLOSURES

19" CABINETS

DEVELOPMENT BOARD ENCLOSURES

CUSTOM SIZED ENCLOSURES

CUSTOM SERVICES