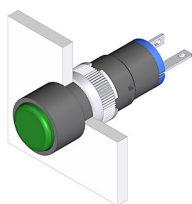


# EAO – Your Expert Partner for Human Machine Interfaces

## 18-030.0055L - Indicator actuator

### 18-030.0055L - Indicator actuator



*Attention: The preview is based on a sample product. This can differ from your current configuration.*

#### Mounting

Mounting cut-out	Ø 8 mm
Design	raised

#### Front

Front dimension	Ø 9 mm
Front shape	round

#### Other Attributes

Weight	0.002 kg
Operation current	2 mA
Operating voltage	kundenspezifisch V

#### Operating-/Indication part

Lens material	Plastic
Lens colour	green
Lens profile	flat
Lens optics	translucent
Lens illumination	illuminative

#### IP-Rating

Front protection	IP 40
------------------	-------

#### Connection Method

Terminal	Solder
----------	--------

#### Illumination

Forward voltage typ.	3.2 V DC @ 20 mA
LED colour	green

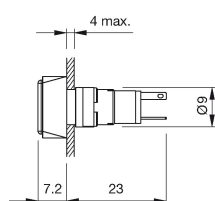
#### Function

Indicator
-----------

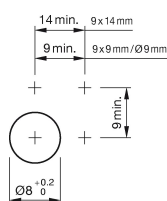
# EAO – Your Expert Partner for Human Machine Interfaces

18-030.0055L - Indicator actuator

## Dimensions



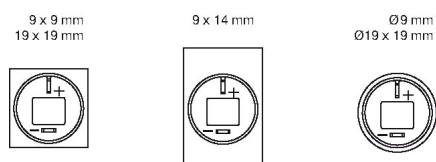
## Mounting cut-outs



## Wiring diagram



## Component layout



## Additional information

Luminosity and wave length variations caused by LED manufacturing processes may cause slight differences regarding the illumination

The series resistance for LEDs need to be determined and integrated by customers.