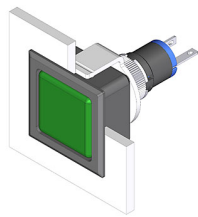


# EAO – Your Expert Partner for Human Machine Interfaces

18-082.0052L - Indicator actuator

## 18-082.0052L - Indicator actuator



*Attention: The preview is based on a sample product. This can differ from your current configuration.*

### Mounting

Design flush

### Other Attributes

Weight 0.003 kg  
Operation current 10 mA  
Operating voltage 24 V DC  $\pm 10\%$

### Operating-/Indication part

Lens material Plastic  
Lens colour red  
Lens profile flat  
Lens optics translucent  
Lens illumination illuminative

### IP-Rating

Front protection IP 40

### Connection Method

Terminal Solder

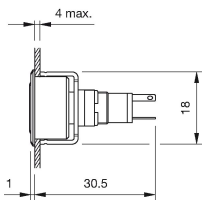
### Function

Indicator

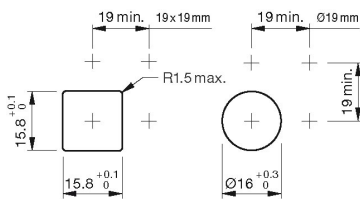
# EAO – Your Expert Partner for Human Machine Interfaces

18-082.0052L - Indicator actuator

## Dimensions



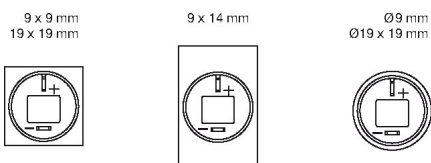
## Mounting cut-outs



## Wiring diagram



## Component layout



## Additional information

Luminosity and wave length variations caused by LED manufacturing processes may cause slight differences regarding the illumination