

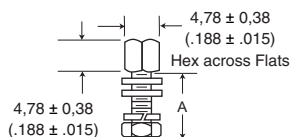
Female Screw Lock



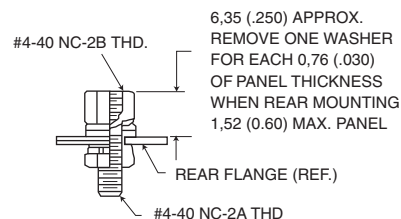
- Kit consists of 1 nut, 3 washer, 1 lock washer, 1 hex nut.
- Order 2 per connector.

Material: Steel
 Finish: Chromate over Cadmium (Mil Spec) or Zinc (RoHS)

Front Panel Mount



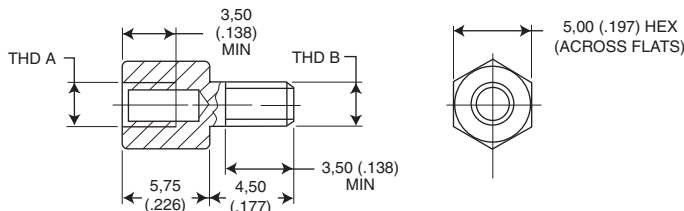
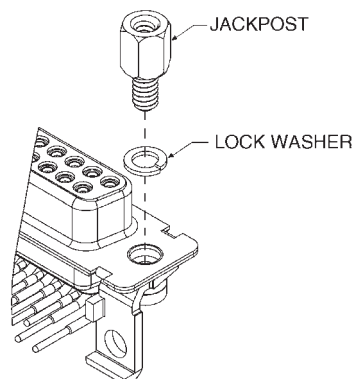
Rear Panel Mount



NOTE: (1) A 6 inch/pound (female) and 4 inch/pound (male) maximum torque during assembly is recommended on steel screw lock assemblies. (2) A third flat washer is supplied for front panel mounting of tab shell connectors.

| Yellow Chromate Over Cadmium each | Chromate Over Zinc Kit of 2 each | RoHS Compliant Part Number | A ± 0,38 (.015) | Mil-Spec Part Number |
|-----------------------------------|----------------------------------|----------------------------|-----------------|----------------------|
| D20418-2 | D20418-82 | D20418-128 | 7,92 (.312) | M24308/26-1F |
| D20418-50 | D20418-131 | - | 12,70 (.500) | - |
| D20418-39 | D20418-83 | D20418-129 | 15,88 (.625) | M24308/26-2F |
| D20418-74 | D20418-132 | - | 19,05 (.750) | - |

Screw Locks for Connectors with Integral Threaded Inserts



| Part Number | Thread Type | |
|-------------|---------------|---------------|
| | THD A | THD B |
| D121073-39 | # 4-40 UNC-2B | # 4-40 UNC-2A |
| D112041 * | # 4-40 UNC-2B | # 4-40 UNC-2A |
| D121073-42 | M3 | M3 |

* without lock washer

- Kit consists of 1 jackpost, 1 lock washer.
- Order 2 per connector.

Loose Spacer

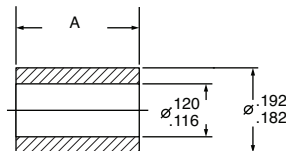
Part Number: 253-0343-000 (D*M Style)

Dim A
 5.84 ± .08 (.230 ± .003)

Part Number: 253-0343-011 (D*MA Style)

9.40 ± .13 (.370 ± .005)

Material: Aluminum
 Finish: Chromate over Cadmium



Dimensions shown in mm (inch)
 Specifications and dimensions subject to change