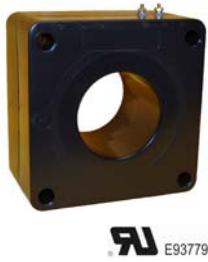


600 Volt Current Transformers

Model 115 Window Diameter: 4.00"

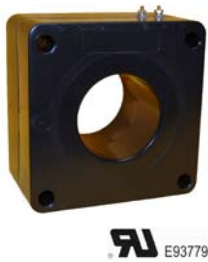


Ratio	Continuous Thermal Current Rating Factor	
	Ambient	
	30°C	55°C
50:5-400:5	2.0	2.0
500:5-600:5	2.0	1.5
750:5	1.5	1.33
800:5-1000:5	1.5	1.0
1200:5	1.33	1.0
1500:5-2500:5	1.0	0.8
3000:5-3200:5	0.8	0.6

*IC Approved (T-192) 600 Volts Indoor, 10 kV BIL 50 - 400 Hz Height: 6.75" Depth: 3.00" Width: 5.96" Weight: 19.0 lbs.

CATALOG NUMBER	CURRENT RATIO	RELAY CLASS	ANSI METERING CLASS AT 60HZ				
			BO.1	BO.2	BO.5	BO.9	B1.8
115-500	50:5	—	2.4	4.8	—	—	—
115-750	75:5	—	1.2	2.4	4.8	—	—
115-101	100:5	C10	1.2	1.2	2.4	4.8	—
115-151	150:5 *	C10	0.6	0.6	1.2	2.4	4.8
115-201	200:5 *	C20	0.3	0.6	0.6	1.2	2.4
115-251	250:5 *	C20	0.3	0.3	0.6	1.2	2.4
115-301	300:5 *	C20	0.3	0.3	0.3	0.6	1.2
115-401	400:5 *	C50	0.3	0.3	0.3	0.3	0.6
115-501	500:5 *	C50	0.3	0.3	0.3	0.3	0.3
115-601	600:5 *	C50	0.3	0.3	0.3	0.3	0.3
115-751	750:5 *	C100	0.3	0.3	0.3	0.3	0.3
115-801	800:5 *	C100	0.3	0.3	0.3	0.3	0.3
115-102	1000:5 *	C100	0.3	0.3	0.3	0.3	0.3
115-122	1200:5 *	C100	0.3	0.3	0.3	0.3	0.3
115-152	1500:5 *	C100	0.3	0.3	0.3	0.3	0.3
115-162	1600:5 *	C100	0.3	0.3	0.3	0.3	0.3
115-202	2000:5 *	C200	0.3	0.3	0.3	0.3	0.3
115-252	2500:5 *	C100	0.3	0.3	0.3	0.3	0.3
115-302	3000:5 *	C200	0.3	0.3	0.3	0.3	0.3
115-322	3200:5 *	C200	0.3	0.3	0.3	0.3	0.3

Model 117 Window Diameter: 4.62"



Ratio	Continuous Thermal Current Rating Factor	
	Ambient	
	30°C	55°C
50:5-400:5	2.0	2.0
500:5-600:5	2.0	1.5
750:5-800:5	1.5	1.33
1000:5	1.5	1.0
1200:5-1500:5	1.33	1.0
1600:5	1.0	0.8
2000:5-3200:5	1.0	0.6
4000:5	0.8	0.6

*IC Approved (T-193) 600 Volts Indoor, 10 kV BIL 50 - 400 Hz Height: 6.75" Depth: 3.00" Width: 5.96" Weight: 13.0 lbs.

117-500	50:5	—	2.4	4.8	—	—	—
117-750	75:5	—	0.6	1.2	4.8	4.8	—
117-101	100:5	—	0.6	0.6	2.4	2.4	—
117-151	150:5	C10	0.3	0.3	0.6	1.2	4.8
117-201	200:5	C10	0.3	0.3	0.6	0.6	4.8
117-251	250:5 *	C20	0.3	0.3	0.6	0.6	2.4
117-301	300:5 *	C20	0.3	0.3	0.3	0.3	2.4
117-401	400:5 *	C20	0.3	0.3	0.3	0.3	1.2
117-501	500:5 *	C20	0.3	0.3	0.3	0.3	0.6
117-601	600:5 *	C20	0.3	0.3	0.3	0.3	0.6
117-751	750:5 *	C50	0.3	0.3	0.3	0.3	0.3
117-801	800:5 *	C50	0.3	0.3	0.3	0.3	0.3
117-102	1000:5 *	C50	0.3	0.3	0.3	0.3	0.3
117-122	1200:5 *	C100	0.3	0.3	0.3	0.3	0.3
117-152	1500:5 *	C50	0.3	0.3	0.3	0.3	0.3
117-162	1600:5 *	C50	0.3	0.3	0.3	0.3	0.3
117-202	2000:5 *	C100	0.3	0.3	0.3	0.3	0.3
117-252	2500:5 *	C100	0.3	0.3	0.3	0.3	0.3
117-302	3000:5 *	—	0.3	0.3	0.3	0.3	0.3
117-322	3200:5 *	—	0.3	0.3	0.3	0.3	0.3
117-402	4000:5 *	—	0.3	0.3	0.3	0.3	0.3

Model 125 Window Diameter: 6.31"



Ratio	Continuous Thermal Current Rating Factor	
	Ambient	
	30°C	55°C
600:5-1600:5	1.5	1.33
2000:5	1.5	1.0
2500:5-3500:5	1.33	1.0
4000:5	1.0	0.8

Shown with Bus Bar Mounting Kit. P/N 0221A26076 600 Volts Indoor, 10 kV BIL 50 - 400 Hz Height: 8.94" Depth: 1.28" Width: 8.50" Weight: 3.0 lbs.

125-601	600:5	0.3	0.3	0.3	1.2	1.2	2.4
125-751	750:5	0.3	0.3	0.3	0.6	1.2	2.4
125-801	800:5	0.3	0.3	0.3	0.6	1.2	2.4
125-102	1000:5	0.3	0.3	0.3	0.3	0.6	1.2
125-122	1200:5	0.3	0.3	0.3	0.3	0.6	1.2
125-152	1500:5	0.3	0.3	0.3	0.3	0.3	0.6
125-162	1600:5	0.3	0.3	0.3	0.3	0.3	0.6
125-202	2000:5	0.3	0.3	0.3	0.3	0.3	0.6
125-252	2500:5	0.3	0.3	0.3	0.3	0.3	0.6
125-302	3000:5	0.3	0.3	0.3	0.3	0.3	0.6
125-352	3500:5	0.3	0.3	0.3	0.3	0.3	0.3
125-402	4000:5	0.3	0.3	0.3	0.3	0.3	0.3

Model 120 Window Diameter: 5.75"



Ratio	Continuous Thermal Current Rating Factor	
	Ambient	
	30°C	55°C
200:5-600:5	2.0	2.0
800:5	2.0	1.5
1000:5	1.5	1.5
1200:5	1.5	1.33
1500:5	1.5	1.0
1600:5-2000:5	1.33	1.0
2500:5-4000:5	1.0	0.8

*IC Approved (T-154) 600 Volts Indoor, 10 kV BIL 50 - 400 Hz Height: 8.94" Depth: 2.17" Width: 8.50" Weight: 11.0 lbs.

120-201	200:5	—	1.2	1.2	2.4	4.8	4.8
120-301	300:5 *	C10	0.3	0.3	1.2	0.6	2.4
120-401	400:5 *	C10	0.3	0.3	0.6	0.6	2.4
120-501	500:5 *	C20	0.3	0.3	0.6	0.6	1.2
120-601	600:5 *	C20	0.3	0.3	0.3	0.6	0.6
120-801	800:5 *	C20	0.3	0.3	0.3	0.3	0.6
120-102	1000:5 *	C20	0.3	0.3	0.3	0.3	0.6
120-122	1200:5 *	C50	0.3	0.3	0.3	0.3	0.3
120-152	1500:5 *	C50	0.3	0.3	0.3	0.3	0.3
120-162	1600:5 *	C50	0.3	0.3	0.3	0.3	0.3
120-202	2000:5 *	C50	0.3	0.3	0.3	0.3	0.3
120-252	2500:5 *	C50	0.3	0.3	0.3	0.3	0.3
120-302	3000:5 *	C50	0.3	0.3	0.3	0.3	0.3
120-352	3500:5 *	C20	0.3	0.3	0.3	0.3	0.3
120-402	4000:5 *	C50	0.3	0.3	0.3	0.3	0.3