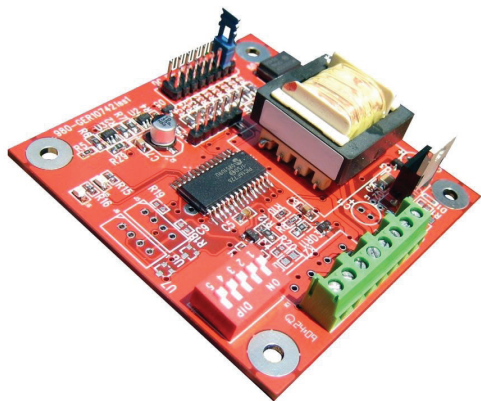


DC Temperature Controller



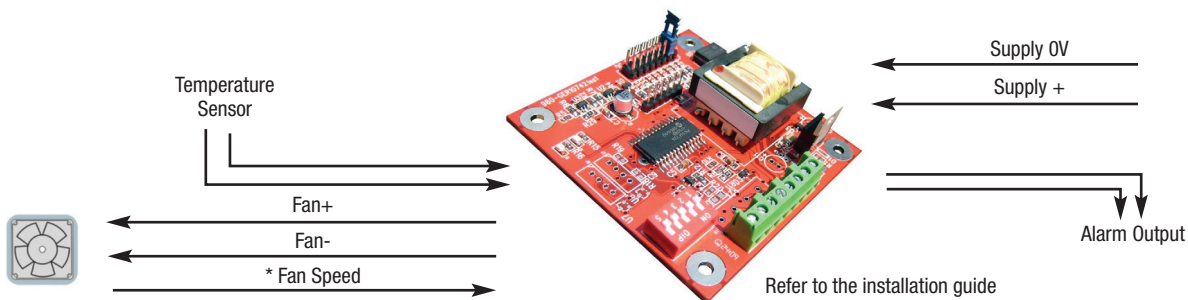
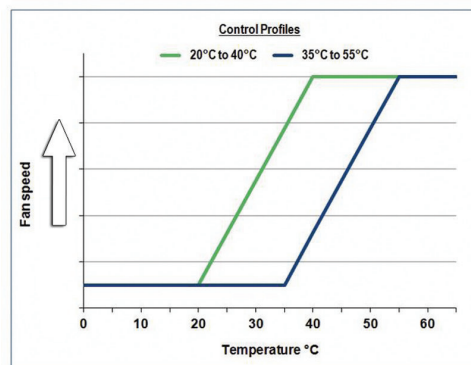
The DC temperature controller provides closed loop, temperature sensitive speed control for ebm-papst 2-wire and 3-wire DC fans. The controller regulates the electrical power supplied to the fan to maintain optimum performance and reliability.

The controller regulates fan speed between 0% and 100% against the selected temperature profile and also incorporates a combined fan fail, sensor fail and over-temperature alarm.

Note: Due to the variations in motor electronics, a small number of mainly high speed fans may not work correctly with this controller.

Part Number	Temperature Profile	Supply Voltage	Ambient temperature	Max Humidity	Alarm Output	Width	Length	Height
	°C	VDC	°C	% RH		mm	mm	mm
CDC122055UC-000	20-40 / 35-55	12	-20...+75	95	Open Collector	72.4	71.1	35
CDC122055UR-000	20-40 / 35-55	12	-20...+75	95	Relay	72.4	71.1	35
CDC242055UC-000	20-40 / 35-55	24	-20...+75	95	Open Collector	72.4	71.1	35
CDC242055UR-000	20-40 / 35-55	24	-20...+75	95	Relay	72.4	71.1	35
CDC482055UC-000	20-40 / 35-55	48	-20...+75	95	Open Collector	72.4	71.1	35
CDC482055UR-000	20-40 / 35-55	48	-20...+75	95	Relay	72.4	71.1	35

- DIP- switch selection for:
 - Temperature profile
 - Minimum fan speed
 - Soft start
- Alarm output
 - Fan failure*
 - Over-temperature
 - Sensor failure
- Supplied complete with 2m NTC temperature sensor
- Up to 17W total fan load



Refer to the installation guide for wiring instructions

*3-wire fans only