

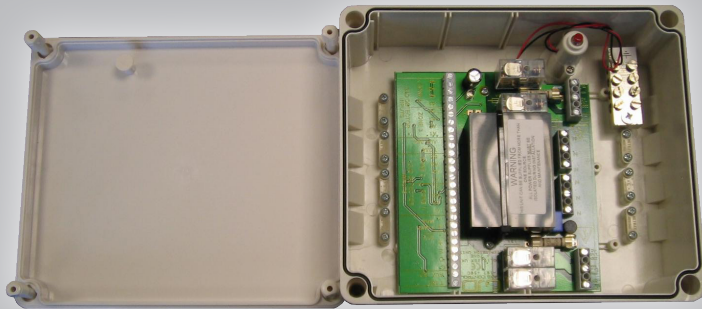


## 4 Zone Expansion Unit

Designed to work with the GJD DygiZone digital lighting controller and the GJD range of external PIR detectors the advanced 4 Zone Expansion Unit greatly simplifies installation time and cost.

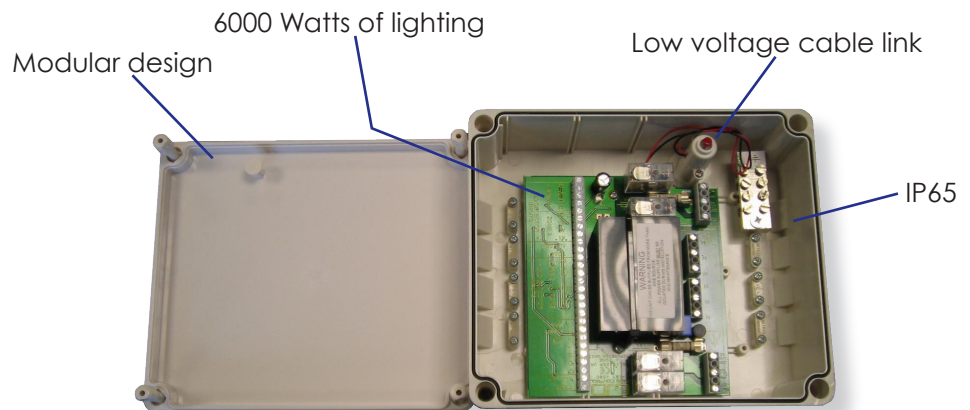
The 4 Zone Expansion Unit incorporates an energy efficient switched mode power supply and can control up to four individual lighting circuits each with 1500W resistive load. Additionally, the modular design enables the Expansion Unit to be conveniently installed within easy access to the mains supply. Up to 5 4 Zone Expansion units can be used on 1 system.

- IP65
- Includes a 1Amp 12VDC power supply
- 6000 Watts of lighting



### FEATURES & BENEFITS

- Modular design
- Low Voltage
- Easy to install
- Works in conjunction with GJD DygiZone



<b>MAINS SUPPLY INPUT</b>	2 X 230 VAC 50 HZ VIA RCD, MCB AND 13 AMP FUSED SPURS
<b>LIGHTING OUTPUTS DRIVEN</b>	4 X 230 VAC 50 HZ 1500 WATTS MAXIMUM OR 1000 WATTS BALLAST
<b>12 VDC DRIVEN</b>	12 VDC @ 1 AMP
<b>"T" 1 &amp; 2 OUTPUT</b>	5 MA +VE SUITABLE FOR DRIVING BASE OF NPN TRANSISTOR. TRIGGERED FROM DETECTORS ON ZONES 1 & 2
<b>"T" 3 &amp; 4 OUTPUT</b>	5 MA +VE SUITABLE FOR DRIVING BASE OF NPN TRANSISTOR. TRIGGERED FROM DETECTORS ON ZONES 3 & 4
<b>AUX 1 &amp; 2 OUTPUT</b>	50 MA -VE SUITABLE FOR DRIVING LOW POWER SOUNDERS. TRIGGERED FROM DETECTORS ON ZONES 1 & 2
<b>AUX 3 &amp; 4 OUTPUT</b>	50 MA -VE SUITABLE FOR DRIVING LOW POWER SOUNDERS. TRIGGERED FROM DETECTORS ON ZONES 3 & 4
<b>OPTIONS</b>	UP TO 10 EXPANSION UNITS CAN BE ADDED TO A SYSTEM FOR ADDITIONAL SWITCHING CAPACITY OR 12 VOLT SUPPLY
<b>OPERATING TEMPERATURE</b>	-10 TO 50+ CENTIGRADE
<b>WEIGHT</b>	810GMS
<b>DIMENSIONS</b>	210 X 180 X 79mm
<b>MOUNTING</b>	MOUNT IN A CLEAN DRY LOCATION ON A SECURE FLAT SURFACE
<b>CE</b>	CLASS 2 INDEPENDENTLY MOUNTED CONTROL EMC DIRECTIVE 2004/108/EC

