

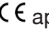
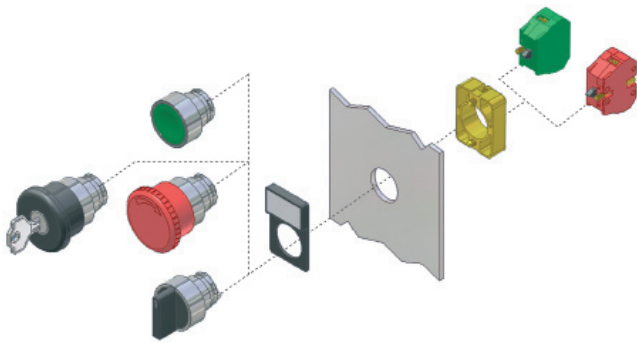


# CONTROL PRODUCTS

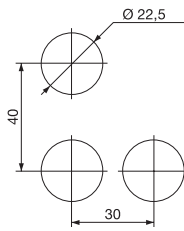
## 22mm Diameter Control Switches

- Metal and plastic bodied control Push-Buttons, E-stops & selector switches
- Rated 600V, 10A max AC
- Operating frequency 3,600 per hour
- Panels mount 1-6mm thick
- Positive opening operation
- Conform to IEC 947-5-1 & EN 60947-5-1
- Terminal marking to EN 50013
- Other button options available to order
-  ,  approved

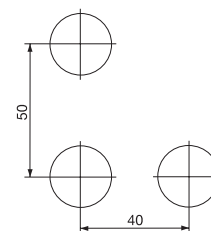


SPECIFICATION		
Rated voltage		600V
Rated AC current	24V	10A
	240V	6A
	400V	4A
Rated DC current	24V	2.8A
	125V	0.55A
	250V	0.27A
Short circuit protection	gG fuse	10A
Impulse withstand		6kV
Internal resistance		<25mΩ
Wire acceptance		0.75-2.5mm <sup>2</sup>
Rated temperature	Operating	-25° to +70°
	Storage	-40° to +80°
Body / escutcheon	Metal	Chromium plated
	Plastic	Fibreglass reinforced thermo-plastic
Electrical Protection	Metal	Class I
	Plastic	Class II
Ingress Protection		IP65
Life		1x10 <sup>6</sup> operation

230V & same polarity panel spacing

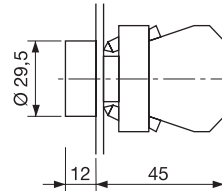


400V & different polarity panel spacing



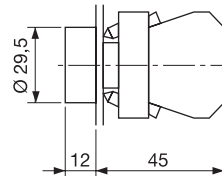
### Flush Push Buttons

METAL BODIED	PLASTIC BODIED	COLOUR
CCTTR30BK	CCTPR30BK	Black
CCTTR30RD	CCTPR30RD	Red
CCTTR30GW	CCTPR30GW	Green
CCTTR30YW	CCTPR30YW	Yellow
CCTTR30BL	CCTPR30BL	Blue
CCTTR30WH	CCTPR30WH	White



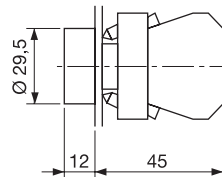
### On/Off Push Buttons

METAL BODIED	PLASTIC BODIED	COLOUR
CCTTR00RD	CCTPR00RD	Red -0
CCTTR01GN	CCTPR01GN	Green -1



### Arrow Push Buttons

METAL BODIED	PLASTIC BODIED	STYLE
CCTTRAHBK	-	Horizontal
CCTTRAVBK	-	Vertical



+44 (0)1638 716101  
info@camdenboss.com  
www.camdenboss.com

We operate a constant improvement policy, our products are subject to change without notice.

Ver 1.0

**CAMDENBOSS**  
ELECTRONICS & ENCLOSURES