

MEDIUM DUTY TOGGLES (Cont.)



Fig. 1



Fig. 2



Fig. 3



Fig. 4



Fig. 5



Fig. 6



Fig. 7



Fig. 8



Fig. 9

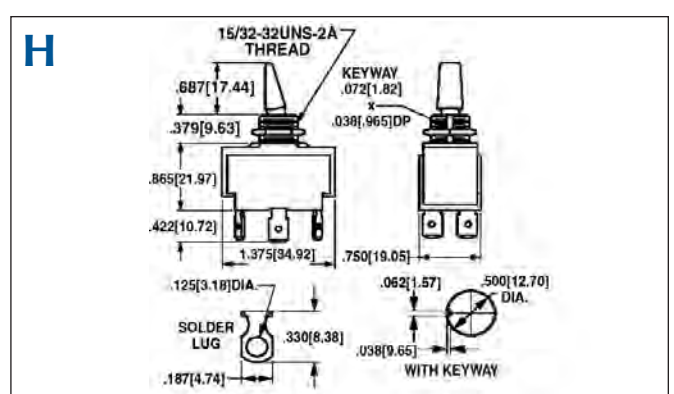
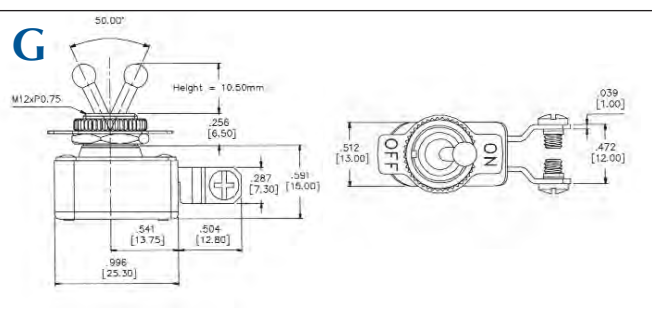
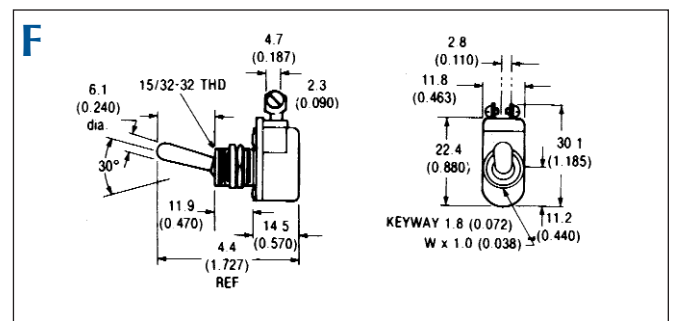
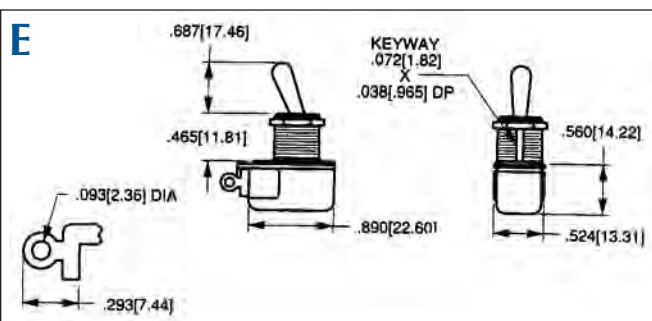
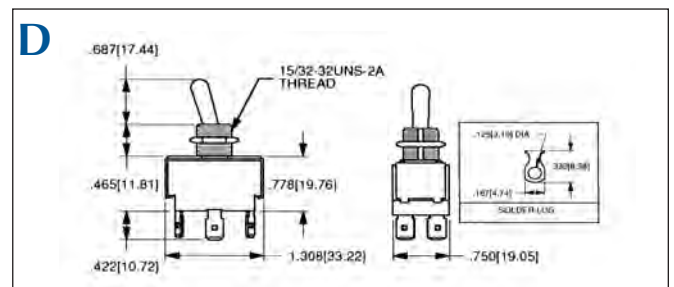
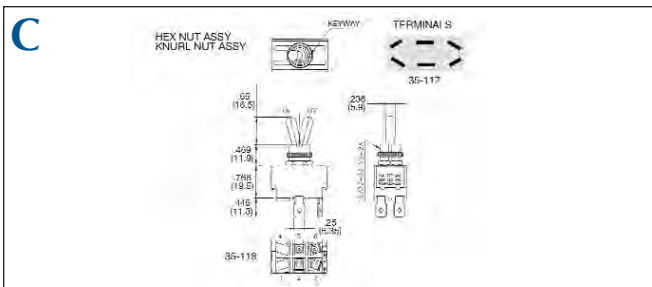
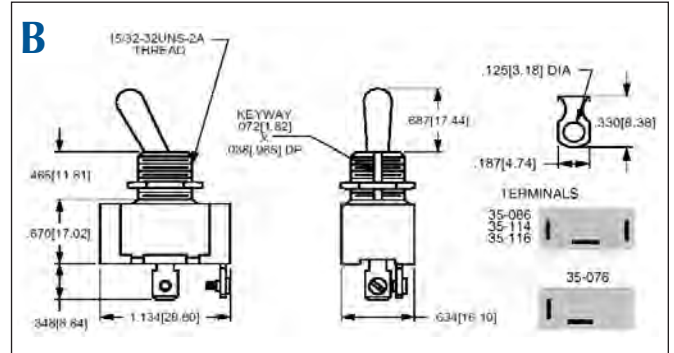
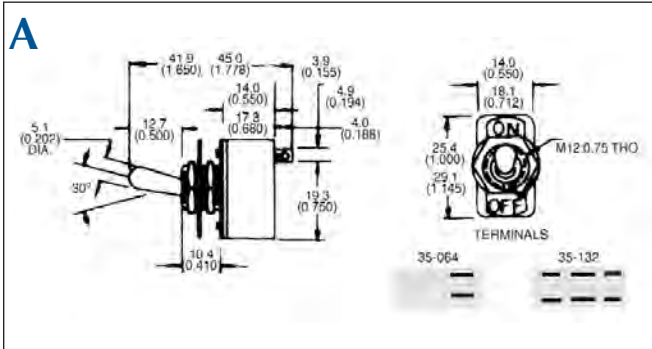
Retail Part No.	Bulk Part No.	Fig. No.	Circuit Function	Poles/Throws	Amps 125VAC	Amps 250VAC	HP 125-250VAC	Actuator Style	Actuator Material	Bushing Length	Mounting Hole	Terminal Type	Hardware	Spec. Drawing Page No.
35-132	35-132-BU	1	On On	DPDT	3			Bat	Metal	0.418	0.500	Solder	2 N, ID	273-A
35-064	35-064-BU	2	On Off	SPST	4	2		Bat	Metal	0.418	0.500	Solder	2 N, ID	273-A
35-076	35-076-BU	3	Off (On)	SPST	6	3	1/4	Bat	Metal	0.465	0.500	Solder	N, KN	273-B
35-086	35-086-BU	3	On Off (On)	SPDT	6	3	1/4	Bat	Metal	0.465	0.500	Solder	N, KN	273-B
35-114	35-114-BU	3	On On	SPDT	6	3	1/4	Bat	Metal	0.465	0.500	Solder	N, KN	273-B
35-116	35-116-BU	3	On (On)	SPDT	6	3	1/4	Bat	Metal	0.465	0.500	Solder	N, KN	273-B
35-117	35-117-BU	4	On On	DPDT	6	3	1/4	Bat	Metal	0.468	0.500	QC .250"	N, KN	273-C
35-118	35-118-BU	4	On Off	DPST	6	3		Bat	Metal	0.468	0.500	QC .250"	N, KN	273-C
35-154	35-154-BU	5	On (On)	DPDT	6	3	1/4	Bat	Metal	0.465	0.500	Solder	N, KN	273-D
35-160	35-160-BU	6	On Off	SPST	6	3		Bat	Metal	0.465	0.500	Solder	N, KN	273-E
35-167	35-167-BU	7	On Off	SPST	6	3		Bat	Metal	0.470	0.500	Screw	N, KN, Sc	273-F
35-171	35-171-BU	8	On Off	SPST	6	3		Ball	Metal	0.276	0.500	Screw	N, KN, Sc, ID	273-G
35-186	35-186-BU	9	On On	DPDT	6	3	1/4	Paddle	Black Plastic	0.379	0.500	Solder	N, KN	273-H
35-188	35-188-BU	9	On Off On	DPDT	6	3	1/4	Paddle	Black Plastic	0.379	0.500	Solder	N, KN	273-H

Notes: (On)=Momentary On
 *Rated 20A @ 125-277VAC
 HP=Horse Power
 ID=ID Plate
 KN=Knurled Nut

NN=Nickel Nut
 N=Nut(s)
 HP=Horse Power
 QC=Quick Connect
 WL=Wire Lead
 Sc=Screw

Note: All figures are for illustration purpose only, and the number/type of terminals may vary.

MEDIUM DUTY TOGGLES (Cont.)



Switches