

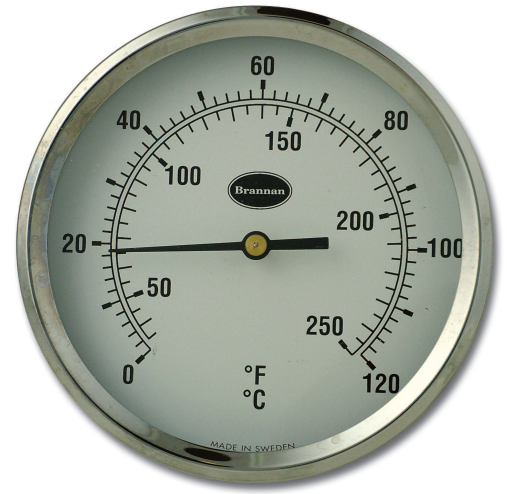
100mm Dial Thermometer - Direct Mounting - Back Entry, 50mm Stem

Applications

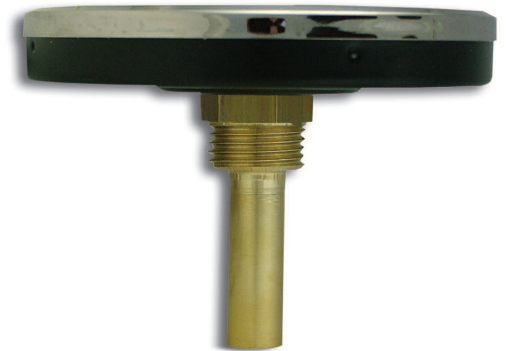
- Heating, ventilation, air-conditioning
- Hot water
- Light industrial

Standard Product Specifications

Design:	BS EN 13190
Accuracy Class:	2
Case:	100mm, black steel with Chrome Bezel
Connection:	Push fit, back entry
Stem Diameter:	9mm
Stem Lengths:	50mm
Pocket:	1/2" BSP brass
Window:	PMMA
Pointer:	Black plastic
Ranges:	-20 to 60°C&F 0 to 120°C&F 0 to 160°C&F
Operating Temperature:	-40 to +80°C
Storage Temperature:	-40 to +60°C
Temperature Element:	Bimetal
Protection:	IP 54 (BS EN 60529:1992)
Dial Weight:	170g (including pocket)
Box Weight:	29g
Total Weight:	199g
Dial Dimensions:	67 x 100mmØ
Box Dimensions:	75 x 125 x 110mm



Product Illustrated
31/621/0



Standard Product Reference Numbers

Range	Product No
-20 to 60°C&F	31/624/0
0 to 120°C&F	31/621/0
0 to 160°C&F	31/625/0

100mm Dial Thermometer - Direct Mounting - Back Entry, 50mm Stem

Optional Product Specifications

Range:	Customer to specify
Class:	1
Case:	Stainless Steel
Pocket:	Stainless Steel
Sensor Mechanism:	Stainless Steel
Connection:	Other sizes/materials inc. NPT
Filling:	Glycerine (with Stainless Steel case)
Logos:	Available (quantity dependent)

Special products can be supplied to order. Quantities required will affect unit price and initial leadtime may be extended.

