

1 Double Deck Terminal Blocks

70 Front-entry

0.08 – 2.5 mm² | AWG 28 – 14
500 V/6 kV/3 ① | 300 V, 15 A ②
20 A | 300/600 V, 20/5 A ③

Terminal block width 5 mm / 0.197 in
8 – 9 mm / 0.33 in

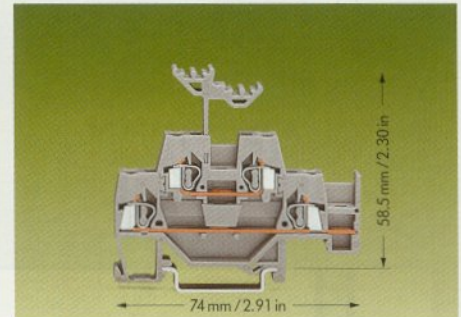
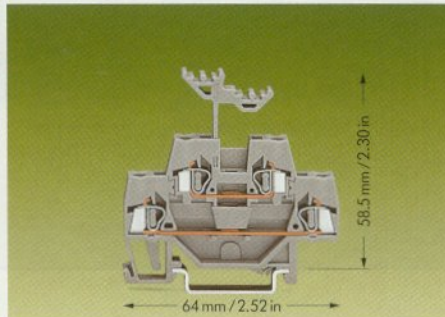
*

0.08 – 2.5 mm² | AWG 28 – 14
500 V/6 kV/3 ① | 300 V, 15 A ②
20 A | 300/600 V, 20/5 A ③

Terminal block width 5 mm / 0.197 in
8 – 9 mm / 0.33 in

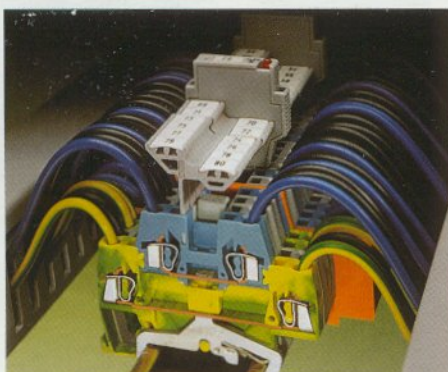
*

- ① 500 V = rated voltage
6 kV = rated surge voltage
3 = pollution degree
(see also section 10)
- ② For information on use of insulation stops and wire range, see page 1.197
- ③ Suitable for EEx i-applications

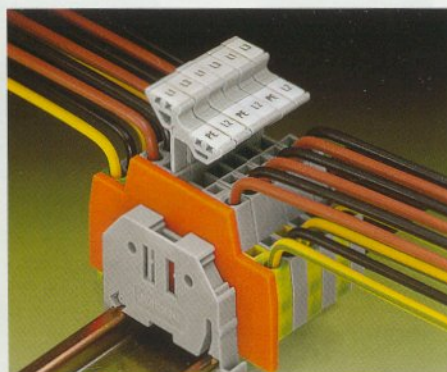


Description	Item-No.	Pack.-unit pcs	Item-No.	Pack.-unit pcs				
Double deck terminal block, for DIN 35 rail	Through/through terminal blocks		Through/through terminal blocks with horizontal jumpering on lower level					
	grey	280-519	50	grey 280-520	50			
	blue	280-529 ①	50	blue 280-530 ①	50			
Accessories (see also section 8)	Appropriate marking system	WMB/WSB		Appropriate marking system	WMB/WSB			
		2.5 mm / 0.098 in thick		2.5 mm / 0.098 in thick				
	End and intermediate plate	orange	280-341	100 (4 x 25)	orange	280-343	100 (4 x 25)	
		grey	280-340	100 (4 x 25)	grey	280-342	100 (4 x 25)	
	Insulation stop ②, 5 pcs/strip	white	0.08 – 0.2 mm ² ②	280-470	200 strips	0.08 – 0.2 mm ² ②	280-470	200 strips
		light grey	0.25 – 0.5 mm ²	280-471	200 strips	0.25 – 0.5 mm ²	280-471	200 strips
		dark grey	0.75 – 1 mm ²	280-472	200 strips	0.75 – 1 mm ²	280-472	200 strips
	Adjacent jumper, insulated	I _N 24 A			I _N 24 A			
		grey	280-402	200 (8 x 25)	grey	280-402	200 (8 x 25)	
	Alternate jumper, insulated	I _N 24 A			I _N 24 A			
		grey	280-409	100 (4 x 25)	grey	280-409	100 (4 x 25)	
	Vertical jumper, insulated	I _N 24 A			I _N 24 A			
		grey	281-421	200 (8 x 25)	grey	281-421	200 (8 x 25)	
	Comb type jumper bar, insulated, see also page 1.198 I _N = I _N of terminal block	2-way	280-482	200 (8 x 25)	2-way	280-482	200 (8 x 25)	
		3-way	280-483	200 (8 x 25)	3-way	280-483	200 (8 x 25)	
		10-way	280-490	50 (2 x 25)	10-way	280-490	50 (2 x 25)	
	Alternate comb type jumper bar, insulated, I _N = I _N of terminal block	2-way	280-492	200 (8 x 25)	2-way	280-492	200 (8 x 25)	
	Operating tool, insulated, for comb jumpers	2-way	280-432	1	2-way	280-432	1	
		3-way	280-433	1	3-way	280-433	1	
		10-way	280-440	1	10-way	280-440	1	

Application notes



Example of a mixed assembly with double deck terminal blocks



Double deck terminal blocks used for the connection of a three-phase motor

* For further approvals with corresponding ratings see pages 10.3 ff.