

# 1700 & 1750 Toggle Switches 16A 250Vac Single and Double Pole



- ▶ Nylon toggle switches
- ▶ Ratings up to 20A, 250V ac
- ▶ Single and double pole
- ▶ Wide choice of terminals
- ▶ Choice of circuit options including 3 position
- ▶ Flat & round actuator options

## Approvals and specifications



16(4)A 250Vac T85



UL 20A 250Vac Non Ind (Single pole)  
 UL 16A 250Vac Non Ind (Double pole)  
 UL CSA (2 pos types) 250Vac 1hp, 125Vac 1/2hp  
 UL CSA (3 pos types) 250Vac 1/2hp, 125Vac 1/4hp  
 CSA 16A 250Vac Non Ind  
 UL 85°C, file E45221, CSA file LR10990  
 UL and CSA N/A on momentary types

Selective "A, B, C" and "OFF, A, A+B" circuits at 5 amp also available.  
 3mm contact gap except where marked  $\mu$ .  
 Technical data on pages 4 & 5.

toggle switches

**C 1750 H O - - -**

TERMINAL FUNCTION ACTUATOR BODY OPTIONS

TERMINAL	FUNCTION		ACTUATOR
<b>C</b>  6.3 x 0.8	<b>Single pole</b>  <b>1700</b>  ON - OFF	<b>Double pole</b>  <b>1750</b>  ON - OFF	<b>H</b>  16.4
<b>H</b>  4.8 x 0.8	<b>1710 <math>\mu</math></b>  ON - ON	<b>1760 <math>\mu</math></b>  ON - ON	
<b>K</b>  2.8 x 0.8	<b>1720 <math>\mu</math></b>  ON - OFF - ON	<b>1770 <math>\mu</math></b>  ON - OFF - ON	<b>R</b>  13.8
<b>T</b>  Solder	<b>1721 <math>\mu</math></b>  ON - OFF - ON (momentary 1 side)		
<b>X</b>  PCB 0.8 Sq	<b>1722 <math>\mu</math></b>  ON - OFF - ON (momentary 2 sides)		The switch is on between centre terminals (2 & 5) and the terminals over which the lever is positioned.



C1700R --



C1700H --



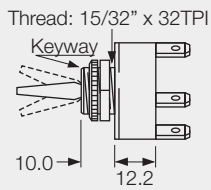
C1760R --



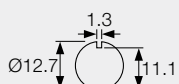
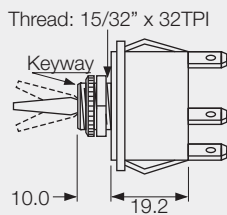
C1750H --

**BODY**

**0**  
Single pole



**0**  
Double pole



Panel hole (all types)  
Panel thickness (Max)  
Both nuts - 3.5mm  
Less backnut - 6.5mm

**OPTIONS**

**Neck Seal A0539M0AAA**

Material - Nitrile  
(H & R Actuators)  
Actuator visible



**Cover A1080M0AAA**

Material - EPDM  
(R Actuator only)



**Cover A0331M0AAA**

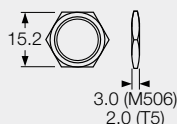
Material - PVC  
(R Actuator only)



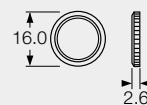
Covers have internal nylon nuts

**Fixing nuts** (Standard is M506 & T92)

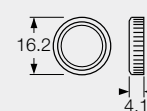
T5 Hex brass  
M506 Hex nylon



T92 Knurled brass - slotted



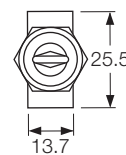
M279 Knurled nylon



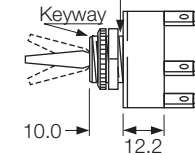
**DIMENSIONS (mm)**

**Single Pole**

(C terminals shown)



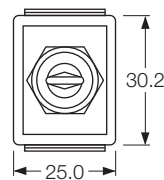
Thread: 15/32" x 32TPI



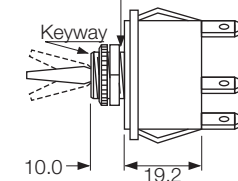
Optional  
F00232PAAA  
plate SP or DP

**Double Pole**

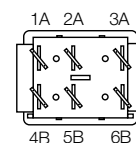
(C terminals shown)



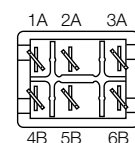
Thread: 15/32" x 32TPI



Without barrier



With barrier



Optional terminal barrier M441.

# SPECIFICATION

**Series** 1750 Metal Lever

**Properties**

Contact Rating	1750/1760/1770	16(4)A 250Vac 16A
1784 - 1789		5A
Contact gap		> 3.0mm
Insulation		Class II
Flame Retardancy		Switch Body UL 94V2
Endurance (mech)		> 50,000 ops.
(elec)		> 10,000 ops. (at rated current)
Contact Resistance		
in new condition		< 10 m ohm
Insulation resistance		> 1000 M ohm
Dielectric strength:		
Across open contacts		> 2KV
Between live parts and accessible surfaces		> 4KV
Tracking resistance		KB250
Humidity resistance at		
91-95% relative humidity		48 Hours

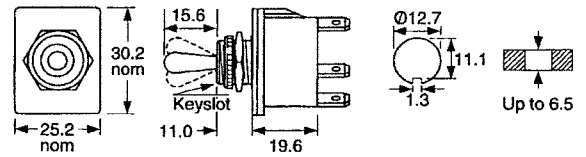
**Materials**

Current carrying parts:

Contact points	Silver alloy
Fixed Terminal	Copper alloy, Silver plated with silver contact
Centre Terminal	Copper alloy, Silver plated
Moving contact	Copper alloy, Silver plated with silver contact
Switch body	Nylon 66
Switch lever	Copper alloy, Nickel plated
Top plate and neck	Cast zinc alloy
Fixing nut	Brass, chrome plated

Approvals applied for.

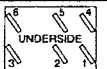
**Approved metal lever switches suitable for Class II applications**



- C1750 OO** 6.3Tab terminals
- T1750 OO** Solder terminals
- S1750 OO** Screw & Clamp terminals

**Switching Function**

Links not supplied



<b>C1750 OO</b>	On/Off		
<b>C1760 OO</b>	Changeover		
<b>C1770 OO</b>	Changeover Centre Off		
<b>C1784OO</b>	A+B	A	OFF
<b>C1785 OO</b>	OFF	A	B
<b>C1786 OO</b>	A	A+B	B+C
<b>C1787 OO</b>	A	B	C
<b>C1788 OO</b>	A	B	B+C
<b>C1789 OO</b>	A	A+B	B

Water resistant cover **F0331MO** provides panel sealing to IP66.

