

---

# Fitting of CodeBug and Enclosure Assembly

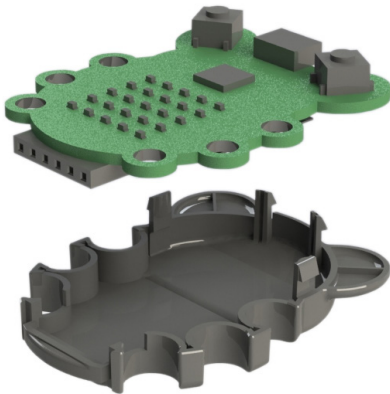
---

---

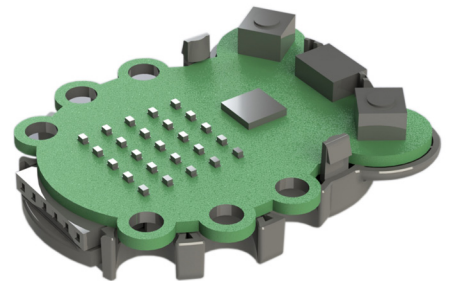
## PCB and Enclosure Assembly

1. Place your CodeBug enclosure onto a steady surface.
2. Clip CodeBug PCB into base ensuring the large clips have trapped the PCB into position.
3. Clip the bottom of the lid onto the end of the base.
4. Push the top of the lid down so that it clips onto the base.
5. To remove the lid, push down on the four base clips using a blunt tool.

1.



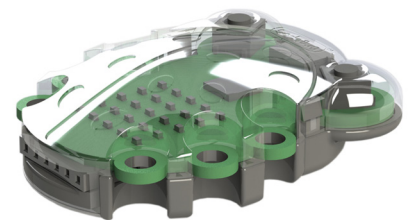
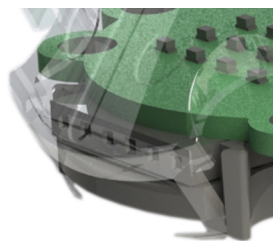
2.



3.



4.



5.

