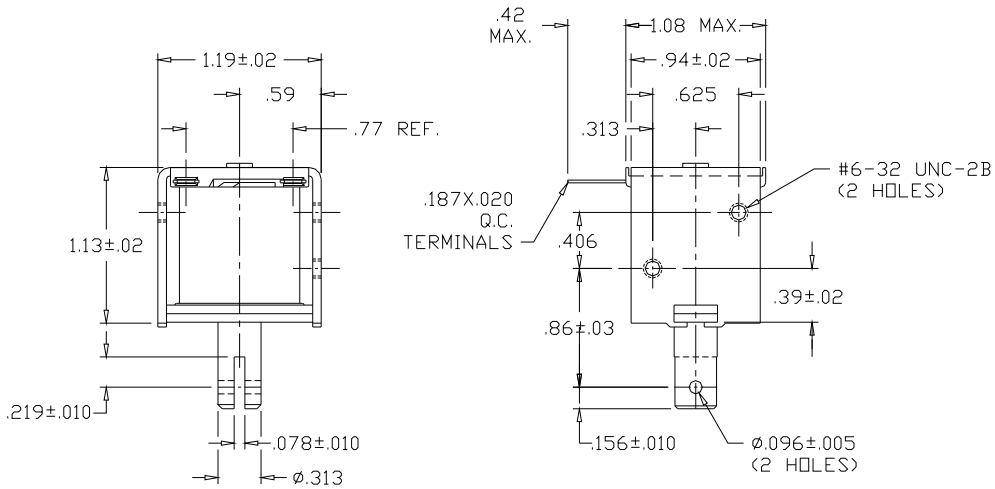


# Model 28 (DC)

Frame-Pull



**ISO 9001 / AS9100 Certified Company**  
 Woodstock, IL 60098 Ph. (815)334-3600 Fax (815)337-0377  
 Or visit us at our website [www.guardian-electric.com](http://www.guardian-electric.com)



Solenoid shown energized and fully seated.  
 Spring kits are available (consult factory).


Total Weight: 3.5 oz.  
 Plunger Weight: .5 oz.

Model No.	Part No.	Duty Cycle	Voltage	Resistance (Ω)	Power (W)	Current
28-I-12D	A420-065453-00	Intermittent	12VDC	11.9	12.7	1.01 A
28-C-12D	A420-065452-00	Continuous	12VDC	29.8	5.1	403 mA
28-I-24D	A420-065455-00	Intermittent	24VDC	47.4	12.8	506 mA
28-C-24D	A420-065454-00	Continuous	24VDC	116	5.2	207 mA

When ordering, please refer to Part No., as listed above.  
 Consult factory for custom configurations.

Stroke (in.)	Pull Force (oz.)								Holding Force (oz.)
	0.050	0.125	0.250	0.375	0.500	0.625	0.750	1.000	
Continuous Duty	25	10	4	2	1	n/a	n/a	n/a	76
Intermittent Duty	40	12	7	4	2	n/a	n/a	n/a	92

### UL Recognition

Recognized under the  Component Recognition Program of Underwriters Laboratories, Inc.

### Continuous Duty

100% 'On' Time

### Intermittent Duty

25% 'On' Time, (100 Seconds 'On' Max. Followed By 300 Seconds 'Off' Min.)

### RoHS

These parts comply with **RoHS** Directive 2002/95/EC

## HEAT RISE

