

flare 24DC-1W-250V6A

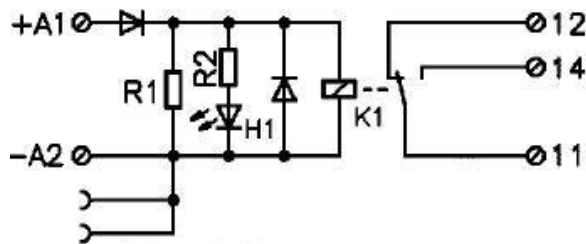
flare 24DC-1W-250V6A

Compact coupling relay

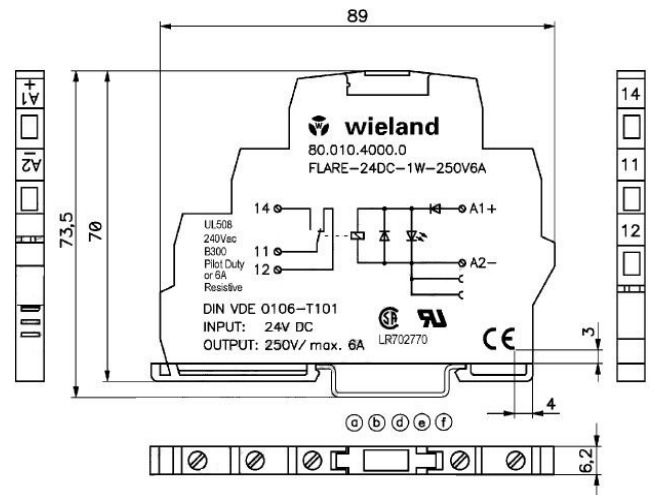
24 V DC

80.010.4000.0

- Compact coupling relay
- Input voltage range 19,2 ... 30 V DC
- 1 changeover contact
- Mounting width 6,2 mm



Wiring diagram



Dimensional diagram

Technical Data

flare 24DC-1W-250V6A	Order no. 80.010.4000.0
Coil circuit	
Operating voltage	24 V DC
Minimum input voltage	19,2 V DC
Maximum input voltage	30 V DC
Nominal input current	14 mA
Nominal input capacity	0,35 W
Status display	LED green
Switching characteristics	
Contacts	1 changeover contact
Contact material	AgSnO ₂
Maximum switching voltage	250 V AC / 300 V DC (see Fig. 1 Load limiting curves)
Maximum continuous current	6 A (see Fig. 1 Load limiting curves)
Maximum starting current	10 A
Maximum switching current	(see Fig. 1 Load limiting curves)
DC1 30 / 110 / 220 V DC	6 A AC / 2 A DC
Maximum switching capacity AC 15	1500 V A / 120 W
Minimum selectable voltage	24 V
Minimum selectable current	8 mA DC
Mechanical life	2 x 10 ⁷

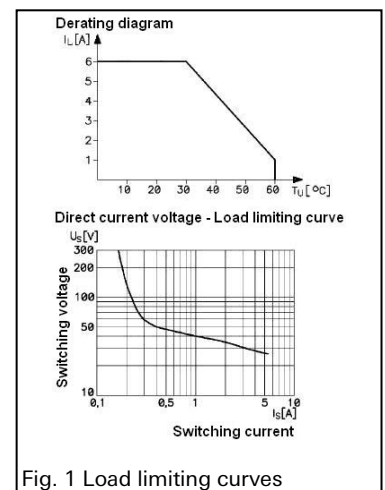


Fig. 1 Load limiting curves

**flare 24DC-1W-250V6A****Technical Data**

flare 24DC-1W-250V6A	Order no. 80.010.4000.0
Electrical life	80 x 10 ³ (230 V AC) 60 x 10 ⁴ (24 V DC)
Maximum switching frequency	0,1 Hz
Pick-up delay	8 ms
Release delay	10 ms
General Data	
Width	6,2 mm
Height	89 mm
Depth	70 mm
Isolation voltage of input/output	4 kV eff.
Ambient temperature	0 ... +60° C (see Fig. 1 Load limiting curves)
Storage temperature	-40 ... +55° C
Degree of protection (IP)	IP20
Mounting rail	TS35 acc. EN 60715
Connection Data	
Connection type	Screw terminals
Wire range fine-stranded min	0,5 mm ²
Wire range fine-stranded max	2,5 mm ²
Wire range solid min	0,25 mm ²
Wire range solid max	4 mm ²
Connectable via pluggable jumper	50
Approvals	
Conformity	CE-conformity
Approvals and Standards	UR, CSA